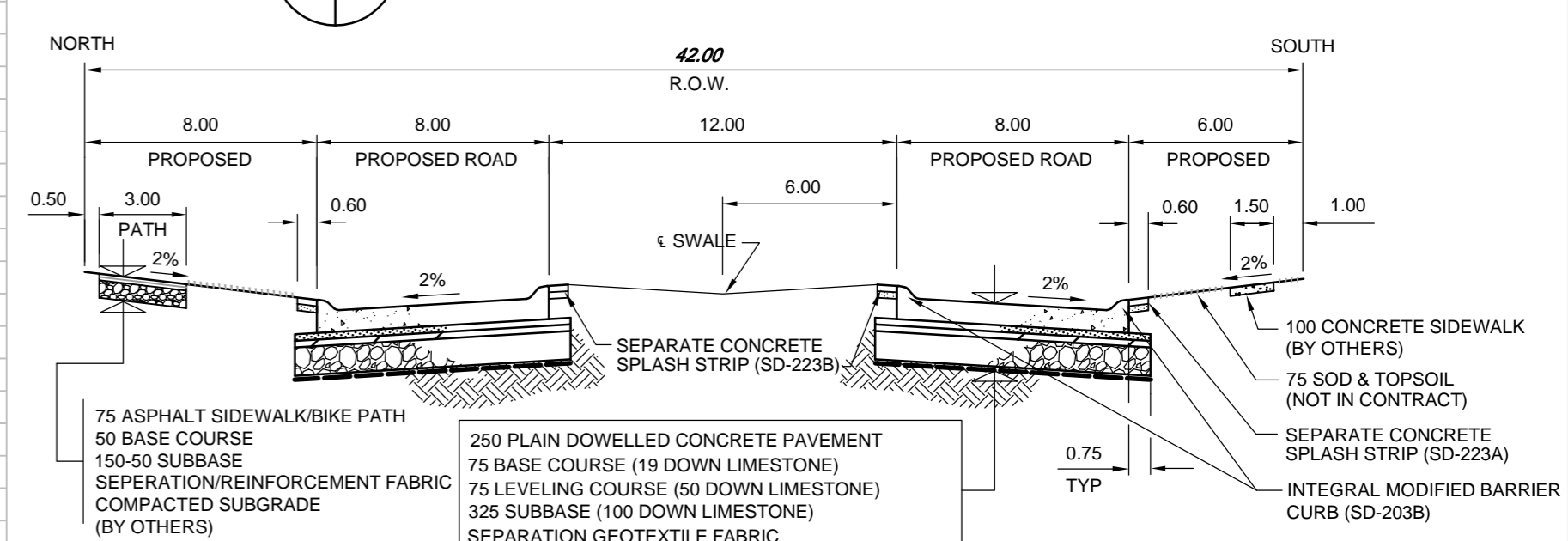
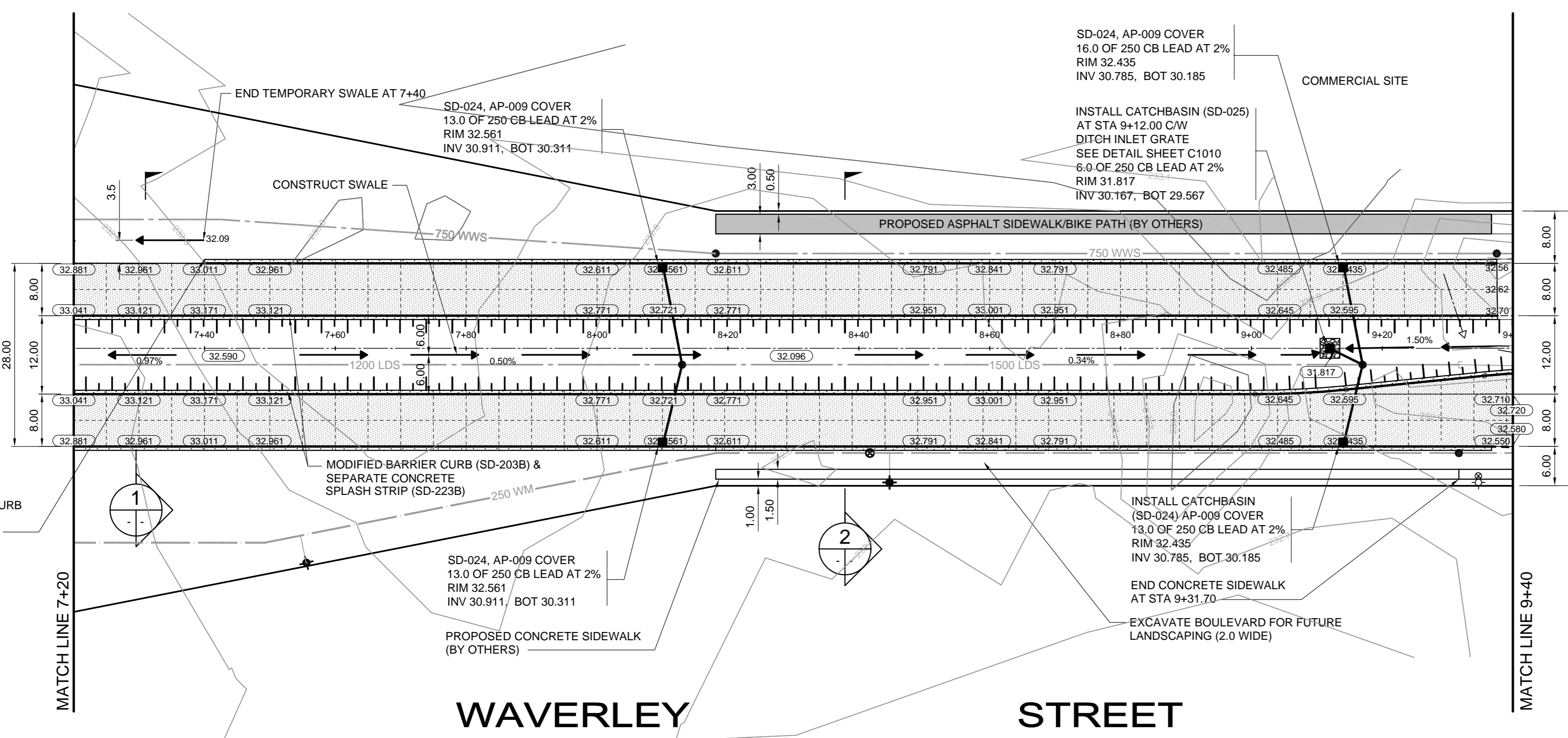
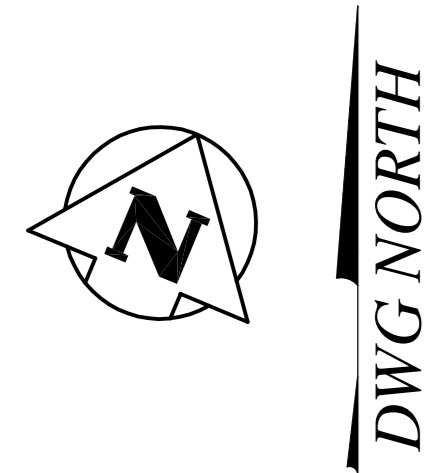


**1**  
WAVERLEY STREET CROSS SECTION  
(STA 7+00 TO STA 7+40)  
NTS

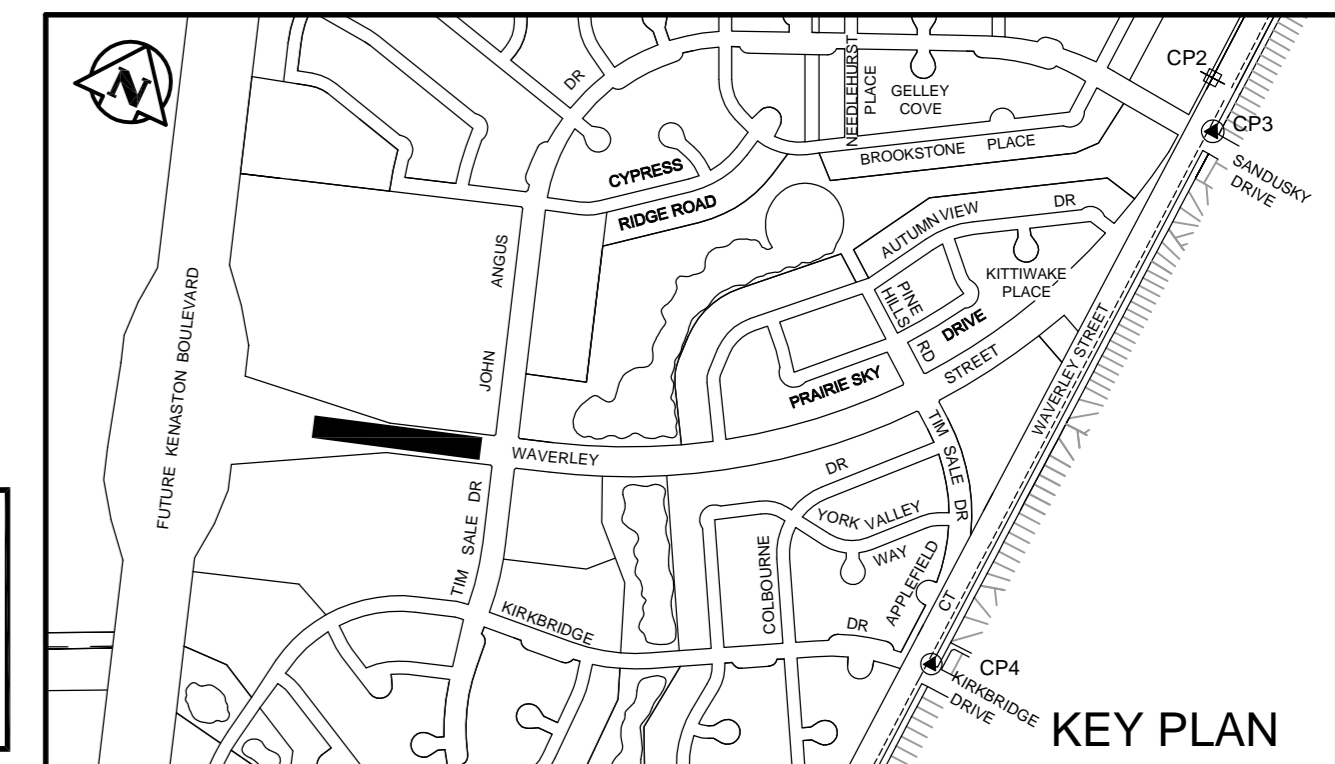


**2**  
WAVERLEY STREET CROSS SECTION  
(STA 7+40 TO STA 9+00.6)  
NTS



- CONSTRUCTION NOTES**
- ALL PAVEMENT DIMENSIONS ARE TO BACK OF CURB.
  - ALL BACKFILL UNDER BOULEVARD TO BE CLASS 4 UNLESS OTHERWISE NOTED.
  - ALL PIPE UNDER EXISTING AND FUTURE PAVEMENT TO BE INSTALLED USING TRENCHLESS METHODS. WHERE NOT POSSIBLE, OPEN CUT WITH CLASS 2 BACKFILL.
  - ALL CURB RAMP IN ACCORDANCE WITH SD-228A STANDARD LAYOUT, C & E.
  - SUBDRAINS AT LOW POINTS (5.0m EACH WAY AS PER SD-245).
- GENERAL NOTES**
- CHAINAGE IS ALONG CENTRE LINE OF WAVERLEY STREET R.O.W.
  - SEE DRAWING C1006 TO C1008 FOR WAVERLEY STREET UNDERGROUND.

Coordinate Control Survey Monuments				
No.	Description	Northing	Easting	Elevation
CP 1	IB CP1	3000.000	10000.000	232.535
CP 2	IB CP3	2741.671	10000.000	232.363
CP 3	GBM82024	2675.060	10035.366	232.259
CP 4	GBM82025	1827.090	10031.834	232.917



**APEGM**  
Certificate of Authorization  
**Wardrop Engineering Inc.**  
No. 195 Expiry: April 30, 2013

EXISTING	LEGEND-PLAN	PROPOSED	EXISTING	LEGEND-PLAN	PROPOSED	EXISTING	LEGEND-PLAN	PROPOSED
150 WM	WATERMAIN	150 WM	SWALE	MANHOLE	RIGHT-OF-WAY			
400 FM	FEEDERMAIN	400 FM		CATCHBASIN	GAS			
300 LDS	LAND DRAINAGE SEWER	300 LDS		HYDRO BOX	HYDRO			
250 WWS	WASTEWATER SEWER	250 WWS		HYDRO POLE	MTS			
300 CS	COMBINED SEWER	300 CS		ANCHOR	SPRINKLER			
200 FCM	FORCEMAIN	200 FCM		TREE	ELEVATION			
	JUNCTIONS			SURVEY BAR	SIDEWALK			
	HYDRANT			SIGNAL CONTROLLER	CURB			
	VALVE				ASPHALT			
	CURB STOP				CONCRETE			
	LEGEND-PLAN	PROPOSED						

**LOCATION APPROVED UNDERGROUND STRUCTURES**

SUPV. U/G STRUCTURES COMMITTEE DATE

NOTE: LOCATION OF UNDERGROUND STRUCTURES AS SHOWN ARE BASED ON THE BEST INFORMATION AVAILABLE. BUT NO GUARANTEE IS GIVEN THAT ALL EXISTING UTILITIES ARE SHOWN OR THAT THE GIVEN LOCATIONS ARE EXACT. CONFIRMATION OF EXISTENCE AND EXACT LOCATION OF ALL SERVICES MUST BE OBTAINED FROM THE INDIVIDUAL UTILITIES BEFORE PROCEEDING WITH CONSTRUCTION.

B.M. ELEV.	NO.	ISSUED FOR TENDER	DATE	BY
	00	ISSUED FOR TENDER	12.06.11	TF
		REVISIONS		

**TETRA TECH**

DESIGNED BY: TF  
DRAWN BY: GMD

CHECKED BY:  
APPROVED BY:

HOR. SCALE: 1 : 500  
VERTICAL: 1 : 20

RELEASED FOR CONSTRUCTION

DATE: 12.04.12

**PRELIMINARY DRAWING**

NOT TO BE USED FOR CONSTRUCTION

CONSULTANT DRAWING NO. 1200070300-DWG-C1002-00

**THE CITY OF WINNIPEG**  
PUBLIC WORKS DEPARTMENT  
ENGINEERING DIVISION

WAVERLEY STREET EXTENSION  
KENASTON BOULEVARD (FUTURE) TO TIM SALE DRIVE

WAVERLEY STREET  
112m EAST OF KENASTON BOULEVARD TO  
28m WEST OF TIM SALE DRIVE

CITY DRAWING NUMBER  
SHEET 2 OF 11  
C1002