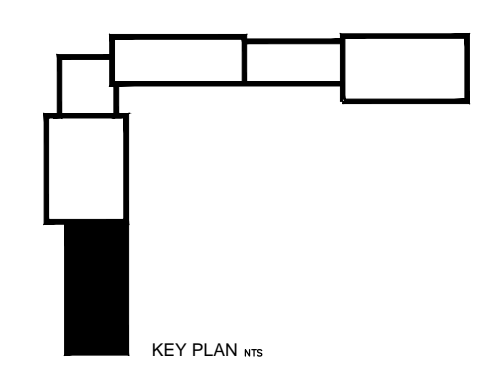


ISSUED FOR CITY REVIEW 11-06-2012

**MAIN FLOOR PLAN - PLUMBING**  
SCALE 1:100

**MAIN FLOOR PLAN - PLUMBING**  
SCALE 1:100

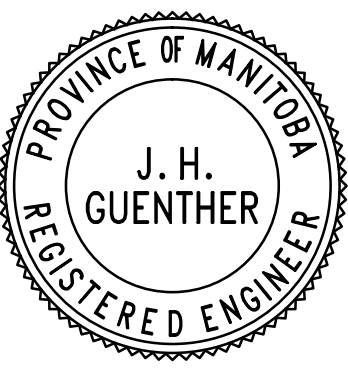
**GENERAL NOTE**  
INCLUDE IN MECHANICAL WORK AND PRICING SUBMISSION ALL THE MECHANICAL REQUIREMENTS OF THE CITY OF WINNIPEG REQUEST FOR PROPOSAL FOR THIS PROJECT (DESIGN AND CONSTRUCTION OF THE PUBLIC WORKS EAST YARD COMPLEX AT THE FORMER ELMWOOD/NAIRN LANDFILL SITE) INCLUDING ALL SPECIFICATIONS, SUBSEQUENT ADDENDA, CLARIFICATIONS, AND APPROVED CHANGE DIRECTIVES AS INTERPRETED BY THE CITY OF WINNIPEG AND THEIR ADVOCATE PROFESSIONAL ENGINEERS AND CONSULTANTS. THE MECHANICAL PLANS OUTLINED HEREIN ARE PROVIDED AS A GUIDE TO THE INTENT OF THE REQUEST FOR PROPOSAL REQUIREMENTS. IN THE CASE OF A CONFLICT OR OMISSION BETWEEN THE DRAWINGS AND SPECIFICATIONS AND THE INTERPRETED CITY OF WINNIPEG REQUEST FOR PROPOSAL, THE INSTALLATION SHALL BE COMPLETED IN CONFORMANCE WITH THE CITY OF WINNIPEG STATEMENT OF REQUIREMENTS AS INTERPRETED BY THE CITY OF WINNIPEG OR THEIR PROJECT PROFESSIONAL ENGINEERING REPRESENTATIVE.



REV	DESCRIPTION	DATE	BY
3	ISSUED FOR CONSTRUCTION	11 MAY 2012	PSG
2	ISSUED FOR 66% REVIEW	06 MAR 2012	PSG
1	ISSUED FOR 33% REVIEW	06 JAN 2012	PSG

**NOVA 3 ENGINEERING LTD.**  
CONSULTING ENGINEERS  
201-120 FORT STREET  
WINNIPEG, MANITOBA  
R3C 1C7  
TEL: (204) 943-6142  
FAX: (204) 942-1276  
CIN: 31-178  
THIS DRAWING IS THE EXCLUSIVE PROPERTY OF NOVA 3 ENGINEERING LTD. AND MAY ONLY BE REPRODUCED WITH THE WRITTEN PERMISSION OF NOVA 3 ENGINEERING LTD.  
THE CONCEPT AND DESIGN INCORPORATED INTO THIS DRAWING ARE BASED ON INFORMATION PROVIDED BY THE CLIENT AND OTHER RELATED SOURCES. PROFESSIONAL ENGINEER ACCEPTS NO RESPONSIBILITY FOR DRAWING AND DESIGN UNLESS DRAWING IS ACCOMPANIED BY ORIGINAL SEALED AND SIGNED LETTER OF INTENT AND CERTIFICATE OF INSPECTION. REFER TO WWW.NOVA3.CA FOR CAUTIONARY NOTES.

**APEGM**  
Certificate of Authorization  
Nova 3 Engineering Ltd.  
No.962 Date: \_\_\_\_\_



**ERNST HANSCH**  
CONSTRUCTION LTD.

3 TERRACON PLACE  
WINNIPEG, CANADA R2J 4B3  
TEL. (204) 233 7881  
FAX (204) 233 4733  
general@ehansch.com  
www.ehansch.com

CLIENT: **CITY OF WINNIPEG PUBLIC WORKS DEPARTMENT**  
PROJECT NUMBER: **1511**  
DRAWN BY: **BSD**  
DATE: **MAR 6, 2012**  
SCALE: **1: 100**

PROJECT TITLE:  
**CITY OF WINNIPEG PUBLIC WORKS EAST YARD COMPLEX MAIN OFFICE & GARAGES**  
SHEET TITLE:  
**MAIN FLOOR PLAN - PLUMBING**

SHEET NUMBER:  
**M1.5**  
REVISION NUMBER:  
**0**