

| PANEL 'PL4' | | VOLTAGE | | 120/208V-3PH-4W | |
|-------------------------|----------|----------|---------|-------------------------|--|
| MOUNTING | EXTERIOR | MAIN BUS | REMARKS | WEATHER PROOF | |
| LOCATION | YARD | 200A | | | |
| DESCRIPTION | BKR | CIRCUIT | BKR | DESCRIPTION | |
| DIESEL IPLC SPLIT WIRED | 15 | 1 | 2 | DIESEL IPLC SPLIT WIRED | |
| | | 3 | 4 | | |
| DIESEL IPLC SPLIT WIRED | 15 | 5 | 6 | DIESEL IPLC SPLIT WIRED | |
| | | 7 | 8 | | |
| DIESEL IPLC SPLIT WIRED | 15 | 9 | 10 | DIESEL IPLC SPLIT WIRED | |
| | | 11 | 12 | | |
| DIESEL IPLC SPLIT WIRED | 15 | 13 | 14 | DIESEL IPLC SPLIT WIRED | |
| | | 15 | 16 | | |
| DIESEL IPLC SPLIT WIRED | 15 | 17 | 18 | DIESEL IPLC SPLIT WIRED | |
| | | 19 | 20 | | |
| DIESEL IPLC SPLIT WIRED | 15 | 21 | 22 | SPACE | |
| | | 23 | 24 | SPACE | |
| DIESEL IPLC SPLIT WIRED | 15 | 25 | 26 | SPACE | |
| | | 27 | 28 | SPACE | |
| DIESEL IPLC SPLIT WIRED | 15 | 29 | 30 | SPACE | |
| | | 31 | 32 | SPACE | |
| DIESEL IPLC SPLIT WIRED | 15 | 33 | 34 | SPACE | |
| | | 35 | 36 | SPACE | |
| DIESEL IPLC SPLIT WIRED | 15 | 37 | 38 | SPACE | |
| | | 39 | 40 | SPACE | |
| SPACE | | 41 | 42 | | |

| PANEL 'PL7' | | VOLTAGE | | 120/208V-3PH-4W | |
|-----------------|-------------------------|----------|---------|-----------------|--|
| MOUNTING | EXTERIOR | MAIN BUS | REMARKS | WEATHER PROOF | |
| LOCATION | STAFF PARKING - SA EAST | 200A | | | |
| DESCRIPTION | BKR | CIRCUIT | BKR | DESCRIPTION | |
| IPLC RECEPTACLE | 15 | 1 | 2 | IPLC RECEPTACLE | |
| | | 3 | 4 | IPLC RECEPTACLE | |
| IPLC RECEPTACLE | 15 | 5 | 6 | IPLC RECEPTACLE | |
| | | 7 | 8 | IPLC RECEPTACLE | |
| IPLC RECEPTACLE | 15 | 9 | 10 | IPLC RECEPTACLE | |
| | | 11 | 12 | IPLC RECEPTACLE | |
| IPLC RECEPTACLE | 15 | 13 | 14 | IPLC RECEPTACLE | |
| | | 15 | 16 | IPLC RECEPTACLE | |
| IPLC RECEPTACLE | 15 | 17 | 18 | IPLC RECEPTACLE | |
| | | 19 | 20 | IPLC RECEPTACLE | |
| IPLC RECEPTACLE | 15 | 21 | 22 | IPLC RECEPTACLE | |
| | | 23 | 24 | IPLC RECEPTACLE | |
| IPLC RECEPTACLE | 15 | 25 | 26 | IPLC RECEPTACLE | |
| | | 27 | 28 | IPLC RECEPTACLE | |
| IPLC RECEPTACLE | 15 | 29 | 30 | SPACE | |
| | | 31 | 32 | SPACE | |
| IPLC RECEPTACLE | 15 | 33 | 34 | SPACE | |
| | | 35 | 36 | SPACE | |
| IPLC RECEPTACLE | 15 | 37 | 38 | SPACE | |
| | | 39 | 40 | SPACE | |
| IPLC RECEPTACLE | 15 | 41 | 42 | SPACE | |
| | | 43 | 44 | SPACE | |
| IPLC RECEPTACLE | 15 | 45 | 46 | SPACE | |
| | | 47 | 48 | SPACE | |
| IPLC RECEPTACLE | 15 | 49 | 50 | SPACE | |
| | | 51 | 52 | SPACE | |
| IPLC RECEPTACLE | 15 | 53 | 54 | SPACE | |
| | | 55 | 56 | SPACE | |
| IPLC RECEPTACLE | 15 | 57 | 58 | SPACE | |
| | | 59 | 60 | SPACE | |

| PANEL 'PL9' | | VOLTAGE | | 120/208V-3PH-4W | |
|-------------------------|------------------|----------|---------|-----------------|--|
| MOUNTING | EXTERIOR | MAIN BUS | REMARKS | WEATHER PROOF | |
| LOCATION | FRONT PARKING FM | 200A | | | |
| DESCRIPTION | BKR | CIRCUIT | BKR | DESCRIPTION | |
| DIESEL IPLC SPLIT WIRED | 15 | 1 | 2 | SPACE | |
| | | 3 | 4 | SPACE | |
| DIESEL IPLC SPLIT WIRED | 15 | 5 | 6 | SPACE | |
| | | 7 | 8 | SPACE | |
| DIESEL IPLC SPLIT WIRED | 15 | 9 | 10 | SPACE | |
| | | 11 | 12 | SPACE | |
| DIESEL IPLC SPLIT WIRED | 15 | 13 | 14 | SPACE | |
| | | 15 | 16 | SPACE | |
| DIESEL IPLC SPLIT WIRED | 15 | 17 | 18 | SPACE | |
| | | 19 | 20 | SPACE | |
| DIESEL IPLC SPLIT WIRED | 15 | 21 | 22 | SPACE | |
| | | 23 | 24 | SPACE | |
| DIESEL IPLC SPLIT WIRED | 15 | 25 | 26 | SPACE | |
| | | 27 | 28 | SPACE | |
| DIESEL IPLC SPLIT WIRED | 15 | 29 | 30 | SPACE | |
| | | 31 | 32 | SPACE | |
| DIESEL IPLC SPLIT WIRED | 15 | 33 | 34 | SPACE | |
| | | 35 | 36 | SPACE | |
| DIESEL IPLC SPLIT WIRED | 15 | 37 | 38 | SPACE | |
| | | 39 | 40 | SPACE | |
| DIESEL IPLC RECEPTACLE | 15 | 41 | 42 | | |

| PANEL 'EMN100' | | VOLTAGE | | 347/600V-3PH-4W | |
|--|---------------------------|-------------------|---------|-----------------|--|
| MOUNTING | SURFACE | MAIN BUS | REMARKS | 100A | |
| LOCATION | MAIN ELECTRICAL ROOM - SA | C/W LOCKABLE DOOR | | | |
| DESCRIPTION | BKR | CIRCUIT | BKR | DESCRIPTION | |
| EXTERIOR BUILDING LIGHTING (YARD ONLY) | 15 | 1 | 2 | SPACE | |
| EXTERIOR BUILDING LIGHTING (YARD ONLY) | 15 | 3 | 4 | SPACE | |
| EXTERIOR BUILDING LIGHTING (YARD ONLY) | 15 | 5 | 6 | SPACE | |
| EXTERIOR BUILDING LIGHTING (YARD ONLY) | 15 | 7 | 8 | SPACE | |
| SPACE | 15 | 9 | 10 | SPACE | |
| SPACE | 15 | 11 | 12 | SPACE | |
| SPACE | 15 | 13 | 14 | SPACE | |
| SPACE | | 15 | 16 | SPACE | |
| SPACE | | 17 | 18 | SPACE | |
| SPACE | | 19 | 20 | SPACE | |
| SPACE | | 21 | 22 | SPACE | |
| SPACE | | 23 | 24 | SPACE | |
| SPACE | | 25 | 26 | SPACE | |
| SPACE | | 27 | 28 | SPACE | |
| SPACE | | 29 | 30 | SPACE | |
| SPACE | | 31 | 32 | SPACE | |
| SPACE | | 33 | 34 | SPACE | |
| SPACE | | 35 | 36 | SPACE | |
| SPACE | | 37 | 38 | SPACE | |
| SPACE | | 39 | 40 | SPACE | |
| SPACE | | 41 | 42 | SPACE | |

| PANEL 'PL6' | | VOLTAGE | | 120/208V-3PH-4W | |
|-------------------------|----------|----------|---------|-------------------------|--|
| MOUNTING | EXTERIOR | MAIN BUS | REMARKS | WEATHER PROOF | |
| LOCATION | YARD | 200A | | | |
| DESCRIPTION | BKR | CIRCUIT | BKR | DESCRIPTION | |
| DIESEL IPLC SPLIT WIRED | 15 | 1 | 2 | DIESEL IPLC SPLIT WIRED | |
| | | 3 | 4 | | |
| DIESEL IPLC SPLIT WIRED | 15 | 5 | 6 | DIESEL IPLC SPLIT WIRED | |
| | | 7 | 8 | | |
| DIESEL IPLC SPLIT WIRED | 15 | 9 | 10 | DIESEL IPLC SPLIT WIRED | |
| | | 11 | 12 | | |
| DIESEL IPLC SPLIT WIRED | 15 | 13 | 14 | DIESEL IPLC SPLIT WIRED | |
| | | 15 | 16 | | |
| DIESEL IPLC SPLIT WIRED | 15 | 17 | 18 | DIESEL IPLC SPLIT WIRED | |
| | | 19 | 20 | | |
| DIESEL IPLC SPLIT WIRED | 15 | 21 | 22 | SPACE | |
| | | 23 | 24 | SPACE | |
| DIESEL IPLC SPLIT WIRED | 15 | 25 | 26 | SPACE | |
| | | 27 | 28 | SPACE | |
| DIESEL IPLC SPLIT WIRED | 15 | 29 | 30 | SPACE | |
| | | 31 | 32 | SPACE | |
| DIESEL IPLC SPLIT WIRED | 15 | 33 | 34 | SPACE | |
| | | 35 | 36 | SPACE | |
| DIESEL IPLC SPLIT WIRED | 15 | 37 | 38 | SPACE | |
| | | 39 | 40 | SPACE | |
| SPACE | | 41 | 42 | | |

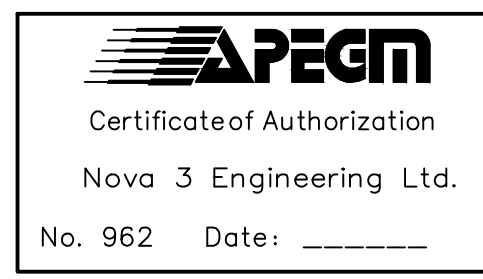
| PANEL 'PL7' | | VOLTAGE | | 120/208V-3PH-4W | |
|-----------------|-------------------------|----------|---------|-----------------|--|
| MOUNTING | EXTERIOR | MAIN BUS | REMARKS | WEATHER PROOF | |
| LOCATION | STAFF PARKING - SA EAST | 200A | | | |
| DESCRIPTION | BKR | CIRCUIT | BKR | DESCRIPTION | |
| IPLC RECEPTACLE | 15 | 1 | 2 | IPLC RECEPTACLE | |
| | | 3 | 4 | IPLC RECEPTACLE | |
| IPLC RECEPTACLE | 15 | 5 | 6 | IPLC RECEPTACLE | |
| | | 7 | 8 | IPLC RECEPTACLE | |
| IPLC RECEPTACLE | 15 | 9 | 10 | IPLC RECEPTACLE | |
| | | 11 | 12 | IPLC RECEPTACLE | |
| IPLC RECEPTACLE | 15 | 13 | 14 | IPLC RECEPTACLE | |
| | | 15 | 16 | IPLC RECEPTACLE | |
| IPLC RECEPTACLE | 15 | 17 | 18 | IPLC RECEPTACLE | |
| | | 19 | 20 | IPLC RECEPTACLE | |
| IPLC RECEPTACLE | 15 | 21 | 22 | IPLC RECEPTACLE | |
| | | 23 | 24 | IPLC RECEPTACLE | |
| IPLC RECEPTACLE | 15 | 25 | 26 | IPLC RECEPTACLE | |
| | | 27 | 28 | IPLC RECEPTACLE | |
| IPLC RECEPTACLE | 15 | 29 | 30 | SPACE | |
| | | 31 | 32 | SPACE | |
| IPLC RECEPTACLE | 15 | 33 | 34 | SPACE | |
| | | 35 | 36 | SPACE | |
| IPLC RECEPTACLE | 15 | 37 | 38 | SPACE | |
| | | 39 | 40 | SPACE | |
| IPLC RECEPTACLE | 15 | 41 | 42 | SPACE | |
| | | 43 | 44 | SPACE | |
| IPLC RECEPTACLE | 15 | 45 | 46 | SPACE | |
| | | 47 | 48 | SPACE | |
| IPLC RECEPTACLE | 15 | 49 | 50 | SPACE | |
| | | 51 | 52 | SPACE | |
| IPLC RECEPTACLE | 15 | 53 | 54 | SPACE | |
| | | 55 | 56 | SPACE | |
| IPLC RECEPTACLE | 15 | 57 | 58 | SPACE | |
| | | 59 | 60 | SPACE | |

| PANEL 'PL10' | | VOLTAGE | | 120/208V-3PH-4W | |
|-----------------|------------------|----------|---------|-----------------|--|
| MOUNTING | EXTERIOR | MAIN BUS | REMARKS | WEATHER PROOF | |
| LOCATION | FM STAFF PARKING | 200A | | | |
| DESCRIPTION | BKR | CIRCUIT | BKR | DESCRIPTION | |
| IPLC RECEPTACLE | 15 | 1 | 2 | IPLC RECEPTACLE | |
| | | 3 | 4 | SPACE | |
| IPLC RECEPTACLE | 15 | 5 | 6 | SPACE | |
| | | 7 | 8 | SPACE | |
| IPLC RECEPTACLE | 15 | 9 | 10 | SPACE | |
| | | 11 | 12 | SPACE | |
| IPLC RECEPTACLE | 15 | 13 | 14 | SPACE | |
| | | 15 | 16 | GATE POWER | |
| IPLC RECEPTACLE | 15 | 17 | 18 | GATE POWER | |
| | | 19 | 20 | SPACE | |
| IPLC RECEPTACLE | 15 | 21 | 22 | SPACE | |
| | | 23 | 24 | SPACE | |

| PANEL '100' | | VOLTAGE | | 347/600V-3PH-4W | |
|----------------------|---------------------------|-------------------|---------|-------------------------------------|--|
| MOUNTING | SURFACE | MAIN BUS | REMARKS | 100A | |
| LOCATION | MAIN ELECTRICAL ROOM - SA | C/W LOCKABLE DOOR | | | |
| DESCRIPTION | BKR | CIRCUIT | BKR | DESCRIPTION | |
| BUILDING LIGHTING | 15 | 1 | 2 | HRV-5B | |
| SITE LIGHTING | 20 | 3 | 4 | | |
| SITE LIGHTING | 20 | 5 | 6 | | |
| 2ND FLOOR LIGHTING | 15 | 7 | 8 | B02-1 | |
| 2ND FLOOR LIGHTING | 15 | 9 | 10 | | |
| 2ND FLOOR LIGHTING | 15 | 11 | 12 | | |
| PUBLIC AREA LIGHTING | 15 | 13 | 14 | B02-2 | |
| PUBLIC AREA LIGHTING | 15 | 15 | 16 | | |
| MAIN FLOOR LIGHTING | 15 | 17 | 18 | | |
| MAIN FLOOR LIGHTING | 15 | 19 | 20 | BASEBOARD HEAT MAIN VESTIBULE (6KW) | |
| MAIN FLOOR LIGHTING | 15 | 21 | 22 | FORCE FLOWS (x2) (8KW) | |
| SPACE | | 23 | 24 | FORCE FLOW (4KW) | |
| SPACE | | 25 | 26 | SPACE | |
| H-5B | | 27 | 28 | SPACE | |
| #10 WIRE | | 29 | 30 | SPACE | |
| | | 31 | 32 | SPACE | |
| HRV-5A | | 33 | 34 | SPACE | |
| | | 35 | 36 | SPACE | |
| | | 37 | 38 | SPACE | |
| SPACE | | 39 | 40 | SPACE | |
| SPACE | | 41 | 42 | SPACE | |
| SPACE | | 43 | 44 | SPACE | |
| SPACE | | 45 | 46 | SPACE | |
| SPACE | | 47 | 48 | SPACE | |
| SPACE | | 49 | 50 | SPACE | |
| SPACE | | 51 | 52 | SPACE | |
| SPACE | | 53 | 54 | SPACE | |
| SPACE | | 55 | 56 | SPACE | |
| SPACE | | 57 | 58 | SPACE | |
| SPACE | | 59 | 60 | SPACE | |

| PANEL 'EME100' | | VOLTAGE | | 347/600V-3PH-4W | |
|-----------------------------------|---------------------------|-------------------|---------|--------------------------------|--|
| MOUNTING | SURFACE | MAIN BUS | REMARKS | 100A | |
| LOCATION | MAIN ELECTRICAL ROOM - SA | C/W LOCKABLE DOOR | | | |
| DESCRIPTION | BKR | CIRCUIT | BKR | DESCRIPTION | |
| NIGHT LIGHTS SM AND WASHBAYS | 20 | 1 | 2 | SPACE | |
| EMERGENCY LIGHTS B0 | 15 | 3 | 4 | SPACE | |
| EMERGENCY LIGHTS SHARED AMENITIES | 15 | 5 | 6 | SPACE | |
| EMERGENCY LIGHTS FM AND PARKS | 15 | 7 | 8 | SPACE | |
| SPACE | 15 | 9 | 10 | SPACE | |
| SPACE | 15 | 11 | 12 | SPACE | |
| SPACE | 15 | 13 | 14 | SPACE | |
| SPACE | | 15 | 16 | SPACE | |
| SPACE | | 17 | 18 | SPACE | |
| SPACE | | 19 | 20 | SPACE | |
| SPACE | | 21 | 22 | SPACE | |
| SPACE | | 23 | 24 | SPACE | |
| SPACE | | 25 | 26 | SPACE | |
| SPACE | | 27 | 28 | SPACE | |
| SPACE | | 29 | 30 | SPACE | |
| SPACE | | 31 | 32 | SPACE | |
| SPACE | | 33 | 34 | SPACE | |
| SPACE | | 35 | 36 | SPACE | |
| SPACE | | 37 | 38 | SPACE | |
| SPACE | | 39 | 40 | NIGHT LIGHTS FLEET MAINTENANCE | |
| SPACE | | 41 | 42 | NIGHT LIGHTS SHARED AMENITIES | |

| REV | DESCRIPTION | DATE | BY |
|-----|-----------------------|------------|----|
| 3 | ISSUED FOR 99% REVIEW | 2012.06.04 | MZ |
| 2 | ISSUED FOR 66% REVIEW | 2012.03.06 | MZ |
| 1 | ISSUED FOR 33% REVIEW | 2012.01.06 | MZ |



NOVA 3 ENGINEERING LTD.
CONSULTING ENGINEERS
201-120 FORT STREET
WINNIPEG, MANITOBA R3C 1C7
TEL: (204) 943-8142
FAX: (204) 942-1276
JN: 31-173
THIS DRAWING IS THE EXCLUSIVE PROPERTY OF NOVA 3 ENGINEERING LTD. AND MAY ONLY BE REPRODUCED WITH THE WRITTEN PERMISSION OF NOVA 3 ENGINEERING LTD.
THE CONCEPT AND DESIGN INCORPORATED INTO THIS DRAWING ARE BASED ON INFORMATION PROVIDED BY THE CLIENT AND OTHER RELATED SOURCES. PROFESSIONAL ENGINEER ACCEPTS NO RESPONSIBILITY FOR DRAWING AND DESIGN UNLESS DRAWING IS ACCOMPANIED BY ORIGINAL SEALED AND SIGNED LETTER OF INTENT AND CERTIFICATE OF INSPECTION. REFER TO WWW.NOVA3.CA FOR CAUTIONARY NOTES.



3 TERRACON PLACE
WINNIPEG, CANADA R2J 4B3
TEL. (204) 233 7881
FAX (204) 233 4733
general@ehansch.com
www.ehansch.com

CLIENT: CITY OF WINNIPEG
PUBLIC WORKS DEPARTMENT
PROJECT NUMBER: 31-178E
DRAWN BY: KC
DATE: MARCH 06, 2012
SCALE: AS SHOWN

PROJECT TITLE:
CITY OF WINNIPEG
PUBLIC WORKS EAST YARD COMPLEX
MAIN OFFICE & GARAGES
SHEET TITLE:
ELECTRICAL PANEL SCHEDULES

NOT FOR CONSTRUCTION

SHEET NUMBER:
E4.4
REVISION NUMBER:
0