

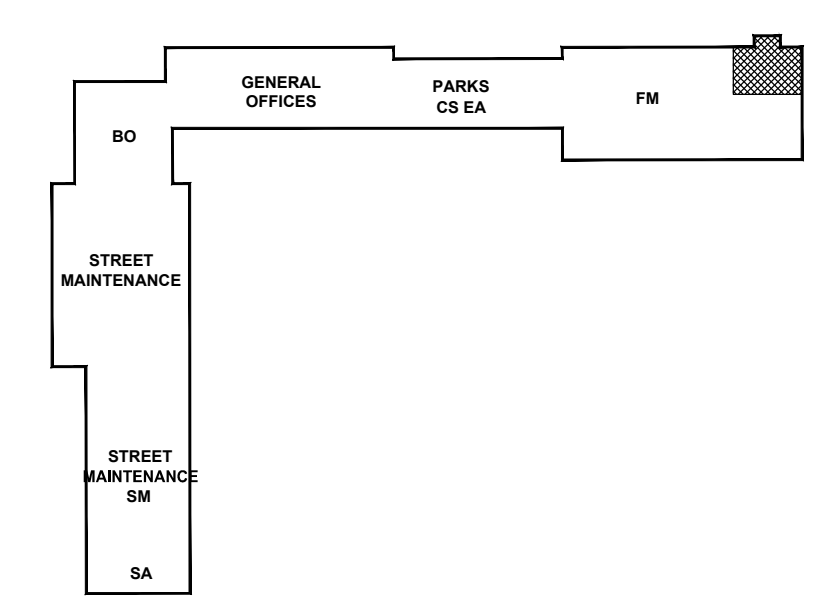
1
E3.5
PARTIAL SECOND FLOOR PLAN
FLEET MANAGEMENT - POWER AND SYSTEMS LAYOUT
SCALE: 1/100

MOTOR SCHEDULE								
NO.	DESCRIPTION	LOCATION	VOLTAGE	HP/W/MCA	C.B.	COND.	STARTER	NOTES
AC-1	AIR COMPRESSOR	SA MECH	600V-3PH	10HP	30A-3P	#10	MAGNETIC	1
AC-2	AIR COMPRESSOR	FM SECOND FLOOR	600V-3PH	20HP	50A-3P	#6	MAGNETIC	1
B-1	GAS BOILER	MECH SA	120V-1PH	FRAC.	15A-1P	#12	-	1
B-2	GAS BOILER	MECH SA	120V-1PH	FRAC.	15A-1P	#12	-	1
BCP-1	BOILER CIRC PUMP	MECH SA-21B	600V-3PH	5HP	15A-3P	#12	MAGNETIC	1
BCP-2	BOILER CIRC PUMP	MECH SA-21B	600V-3PH	5HP	15A-3P	#12	MAGNETIC	1
BS-17 TO 64 (x20)	BRANCH SELECTOR	SEE DRAWINGS	208V-1PH	0.1MCA	15A-2P	#12	MANUAL	1
CF-1 (x3)	CEILING FAN	SEE DRAWINGS	120V-1PH	FRAC	15A-1P	#12	MANUAL	1
SF-1	SUPPLY FAN	FLEET MEZZ	120V-1PH	1/3 HP	20A-1P	#12	MANUAL	1
SF-2	SUPPLY FAN	CS-13	120V-1PH	1/4 HP	15A-1P	#12	MANUAL	1
DC-1	DUST COLLECTOR	OUTSIDE CS-10	600V-3PH	15HP	40A-3P	#8	MAGNETIC	1
DC-2	DUST COLLECTOR	B.O. WORKSHOP	120V-1PH	15.1A	20A-1P	#12	-	1
DHWP-1	DOMESTIC HOT WATER PUMP	WASH EQUIP	120V-1PH	1/3HP	20A-1P	#12	MANUAL	1
DHWP-2	DOMESTIC HOT WATER PUMP	WASH EQUIP	120V-1PH	1/4HP	15A-1P	#12	MANUAL	1
DHWP-3A	DOMESTIC HOT WATER PUMP	MECH SA-21B	120V-1PH	1/2HP	20A-1P	#12	MANUAL	1
DHWP-3B	DOMESTIC HOT WATER PUMP	MECH SA-21B	120V-1PH	1/2HP	20A-1P	#12	MANUAL	1
DHWP-4	DOMESTIC HOT WATER PUMP	FLEET MEZZANINE	120V-1PH	1/4HP	15A-1P	#12	MANUAL	1
EF-1	EXHAUST FAN	WASH BAY	600V-3PH	2HP	15A-3P	#12	MAGNETIC	1
EF-2	EXHAUST FAN	SM	600V-3PH	1.5HP	15A-3P	#12	MAGNETIC	1
EF-3	EXHAUST FAN	SM	600V-3PH	2HP	15A-3P	#12	MAGNETIC	1
EF-4	EXHAUST FAN	BRIDGE OPERATIONS	600V-3PH	2HP	15A-3P	#12	MAGNETIC	1
EF-5	EXHAUST FAN	FLEET MEZZ.	120V-1PH	1/4 HP	15A-1P	#12	MANUAL	1
EF-6	EXHAUST FAN	PARKS	600V-3PH	-	-	-	-	1
EF-7	EXHAUST FAN	PARKS	600V-3PH	1.5HP	15A-3P	#12	MAGNETIC	1
EF-8	EXHAUST FAN	PARKS	600V-3PH	2HP	15A-3P	#12	MAGNETIC	1
EF-9	EXHAUST FAN	FM	600V-3PH	2HP	15A-3P	#12	MAGNETIC	1
EF-10	EXHAUST FAN	FM STORAGE	600V-3PH	2HP	15A-3P	#12	MAGNETIC	1
EF-11	EXHAUST FAN	CS-13	120V-1PH	1/4 HP	15A-1P	#12	MANUAL	1
EF-12	EXHAUST FAN	CS-14	120V-1PH	1/2HP	20A-1P	#12	MANUAL	1
EF-13	EXHAUST FAN	SM-13	600V-3PH	3HP	15A-3P	#12	MAGNETIC	1
EF-14	EXHAUST FAN	EA-09	120V-1PH	1/2HP	20A-1P	#12	MANUAL	1
FC-1 TO 50	FAN COIL	SEE DRAWINGS	208V-1PH	FRAC.	15A-2P	#12	MANUAL	1
H-5B	ELECTRIC HUMIDIFIER	ADMIN OFFICE	600V-3PH	18.7KW	30A-3P	#10	-	1
H-10	ELECTRIC HUMIDIFIER	FLEET MAINTENANCE	600V-3PH	7.5KW	20A-2P	#12	-	1
SP-1A	SUMP PUMP	LOCKER #136B	120V-1PH	1/2 HP	20A-1P	#12	MANUAL	1
SP-1B	SUMP PUMP	LOCKER #136B	120V-1PH	1/2 HP	20A-1P	#12	MANUAL	1
EHC-1	ELECTRIC HEATING COIL	CS-13	600V-3PH	15 KW	20A-3P	#12	-	1
HFF-1	HYDRONIC FORCE FLOW	SEE DRAWINGS	120V-1PH	FRAC.	15A-1P	#12	-	1
HRV-1	HEAT RECOVERY VENTILATOR	WASH BAY	600V-3PH	18FLA	30A-3P	#10	MAGNETIC	1
HRV-2	HEAT RECOVERY VENTILATOR	SM	600V-3PH	10.9FLA	20A-3P	#12	MAGNETIC	1
HRV-3	HEAT RECOVERY VENTILATOR	SM	600V-3PH	15.7FLA	30A-3P	#10	MAGNETIC	1
HRV-4	HEAT RECOVERY VENTILATOR	BRIDGE OPERATIONS	600V-3PH	6.9FLA	15A-3P	#12	MAGNETIC	1
HRV-5A	HEAT RECOVERY VENTILATOR	SA MECH ROOM	600V-3PH	6.9FLA	15A-3P	#12	MAGNETIC	1
HRV-5B	HEAT RECOVERY VENTILATOR	SA	600V-3PH	6.9FLA	15A-3P	#12	MAGNETIC	1
HRV-8	HEAT RECOVERY VENTILATOR	PARKS	600V-3PH	6.9FLA	15A-3P	#12	MAGNETIC	1
HRV-9	HEAT RECOVERY VENTILATOR	SHOPS FM	600V-3PH	23.4FLA	40A-3P	#8	MAGNETIC	1
HRV-10	HEAT RECOVERY VENTILATOR	FM SECOND FLOOR	600V-3PH	3.8FLA	15A-3P	#12	MAGNETIC	1
HUH-1	HYDRONIC UNIT HEATER	SPRINKLER ROOM	120V-1PH	FRAC.	15A-1P	#12	-	1
HUH-2	HYDRONIC UNIT HEATER	MECH ROOM WEST	120V-1PH	FRAC.	15A-1P	#12	-	1
HUH-3	HYDRONIC UNIT HEATER	MECH ROOM EAST	120V-1PH	FRAC.	15A-1P	#12	-	1
HP-1A	DAIKIN HEAT PUMP	SA ROOF (MAIN CENTRAL)	208V-3PH	36.1MCA	50A-3P	#6	PACKAGED	1
HP-1B	DAIKIN HEAT PUMP	SA ROOF (MAIN CENTRAL)	208V-3PH	36.1MCA	50A-3P	#6	PACKAGED	1
HP-1C	DAIKIN HEAT PUMP	SA ROOF (MAIN CENTRAL)	208V-3PH	41.3MCA	60A-3P	#6	PACKAGED	1
HP-2A	DAIKIN HEAT PUMP	SA ROOF (WEST)	208V-3PH	36.1MCA	50A-3P	#6	PACKAGED	1
HP-2B	DAIKIN HEAT PUMP	SA ROOF (WEST)	208V-3PH	36.1MCA	50A-3P	#6	PACKAGED	1
HP-2C	DAIKIN HEAT PUMP	SA ROOF (WEST)	208V-3PH	41.3MCA	60A-3P	#6	PACKAGED	1
HP-3A	DAIKIN HEAT PUMP	SA ROOF (EAST)	208V-3PH	41.3MCA	60A-3P	#6	PACKAGED	1
HP-3B	DAIKIN HEAT PUMP	SA ROOF (EAST)	208V-3PH	36.1MCA	50A-3P	#6	PACKAGED	1
HP-4	DAIKIN HEAT PUMP	FM ROOF	208V-3PH	44.2MCA	50A-3P	#6	PACKAGED	1
BCP-1	BOILER CIRC PUMP	SA MECH	600V-3PH	5HP	15A-3P	#12	MAGNETIC	1
BCP-2	BOILER CIRC PUMP	SA MECH	600V-3PH	5HP	15A-3P	#12	MAGNETIC	1
HWCP-1	HOT WATER CIRC PUMP	SA MECH	600V-3PH	15HP	40A-3P	#8	MAGNETIC	1
HWCP-2	HOT WATER CIRC PUMP	SA MECH	600V-3PH	15HP	40A-3P	#8	MAGNETIC	1
MUA-1	MAKE-UP AIR UNIT	HEAVY EQUIPMENT WASH BAY SA-26	600V-3PH	5HP	15A-3P	#12	PACKAGED	1
MUA-2	MAKE-UP AIR UNIT	STREET MAINTENANCE	600V-3PH	3HP	15A-3P	#12	PACKAGED	1
MUA-3	MAKE-UP AIR UNIT	STREET MAINTENANCE	600V-3PH	5HP	15A-3P	#12	PACKAGED	1
MUA-4	MAKE-UP AIR UNIT	BRIDGE OPERATIONS	600V-3PH	5HP	15A-3P	#12	PACKAGED	1
MUA-7	MAKE-UP AIR UNIT	PARKS	600V-3PH	5HP	15A-3P	#12	PACKAGED	1
MUA-8	MAKE-UP AIR UNIT	PARKS	600V-3PH	5HP	15A-3P	#12	PACKAGED	1
MUA-9	MAKE-UP AIR UNIT	FLEET MAINTENANCE	600V-3PH	10HP	30A-3P	#10	PACKAGED	1
RH-1	RANGE HOOD	MULTI-PURPOSE ROOM SA-09	120V-1PH	FRAC	15A-1P	#12	MANUAL	1
RTH-1 TO RTH-6	RADIANT TUBE HEATERS	SEE DRAWINGS	120V-1PH	15MCA	15A-1P	#12	MANUAL	1
RTU-1	ROOF TOP UNIT	PARKS ROOF	208V-3PH	25.2MCA	40A-3P	#8	PACKAGED	1,2
RTU-2	ROOF TOP UNIT	PARKS ROOF	208V-1PH	13.6MCA	20A-2P	#12	PACKAGED	1,2
RTU-3	ROOF TOP UNIT	PARKS ROOF	208V-1PH	13.6MCA	20A-2P	#12	PACKAGED	1,2
TPEF-1	TAIL PIPE EXHAUST	SHOPS FM-01	-	-	-	-	-	1
VAV-1 TO 50	VARIABLE AIR VOLUME BOX	SEE DRAWINGS	120V-1PH	FRAC.	15A-1P	#12	-	1

ISSUED FOR CITY REVIEW

SPECIFIC NOTES:
 1. WIRE AND CONNECT AS REQUIRED. REFER TO MECHANICAL.
 2. MAGNETIC STARTER BY DIV. 16.
 3. MANUAL STARTER BY DIV. 16.
 4. ALL LOW VOLTAGE CONTROL WIRING BY DIV. 15.

GENERAL NOTES:
 A. MANUAL STARTERS TO BE C/W OVERCURRENT PROTECTION.
 B. ALL DISCONNECT SWITCHES TO BE SUPPLIED BY DIV. 16.
 C. ELECTRICAL CONTRACTOR TO PROVIDE CIRCUIT BREAKERS AND WIRING ACCORDING TO THE FINAL NAMEPLATES OF ALL THE MECHANICAL EQUIPMENT.
 D. ALL LOW VOLTAGE CONTROL WIRING BY DIV. 15.
 E. ALL LINE VOLTAGE CONTROL WIRING BY DIV. 16 - REFER TO MECHANICAL SECTION. CO-ORDINATE EXACT REQUIREMENTS WITH DIV. 15.



2
E3.5
KEY PLAN
SCALE: 1/2000

NOT FOR CONSTRUCTION

REV	DESCRIPTION	DATE	BY
3	ISSUED FOR 99% REVIEW	2012.06.04	MZ
2	ISSUED FOR 66% REVIEW	2012.03.06	MZ
1	ISSUED FOR 33% REVIEW	2012.01.06	MZ

NOVA 3 ENGINEERING LTD.
 CONSULTING ENGINEERS
 201-120 FORT STREET TEL: (204) 943-8142
 WINNIPEG, MANITOBA FAX: (204) 942-1276
 R3C 1C7 JN.: 31-173

This drawing is the exclusive property of Nova 3 Engineering Ltd. and may only be reproduced with the written permission of Nova 3 Engineering Ltd. The concept and design incorporated into this drawing are based on information provided by the client and other related sources. Professional Engineer accepts no responsibility for drawing and design unless drawing is accompanied by original sealed and signed letter of intent and certificate of inspection. Refer to www.nova3.ca for cautionary notes.

APEGM
 Certificate of Authorization
 Nova 3 Engineering Ltd.
 No. 962 Date: _____

ERNST HANSCH
 CONSTRUCTION LTD.

3 TERRACON PLACE
 WINNIPEG, CANADA R2J 4B3
 TEL. (204) 233 7881
 FAX (204) 233 4733
 general@ehansch.com
 www.ehansch.com

CLIENT: CITY OF WINNIPEG
 PUBLIC WORKS DEPARTMENT
 PROJECT NUMBER: 31-178E
 DRAWN BY: KC
 DATE: MARCH 06, 2012
 SCALE: AS SHOWN

PROJECT TITLE:
 CITY OF WINNIPEG
 PUBLIC WORKS EAST YARD COMPLEX
 MAIN OFFICE & GARAGES
 SHEET TITLE:
 SECOND FLOOR POWER & SYSTEMS LAYOUT

SHEET NUMBER:
E3.5
 REVISION NUMBER:
 0