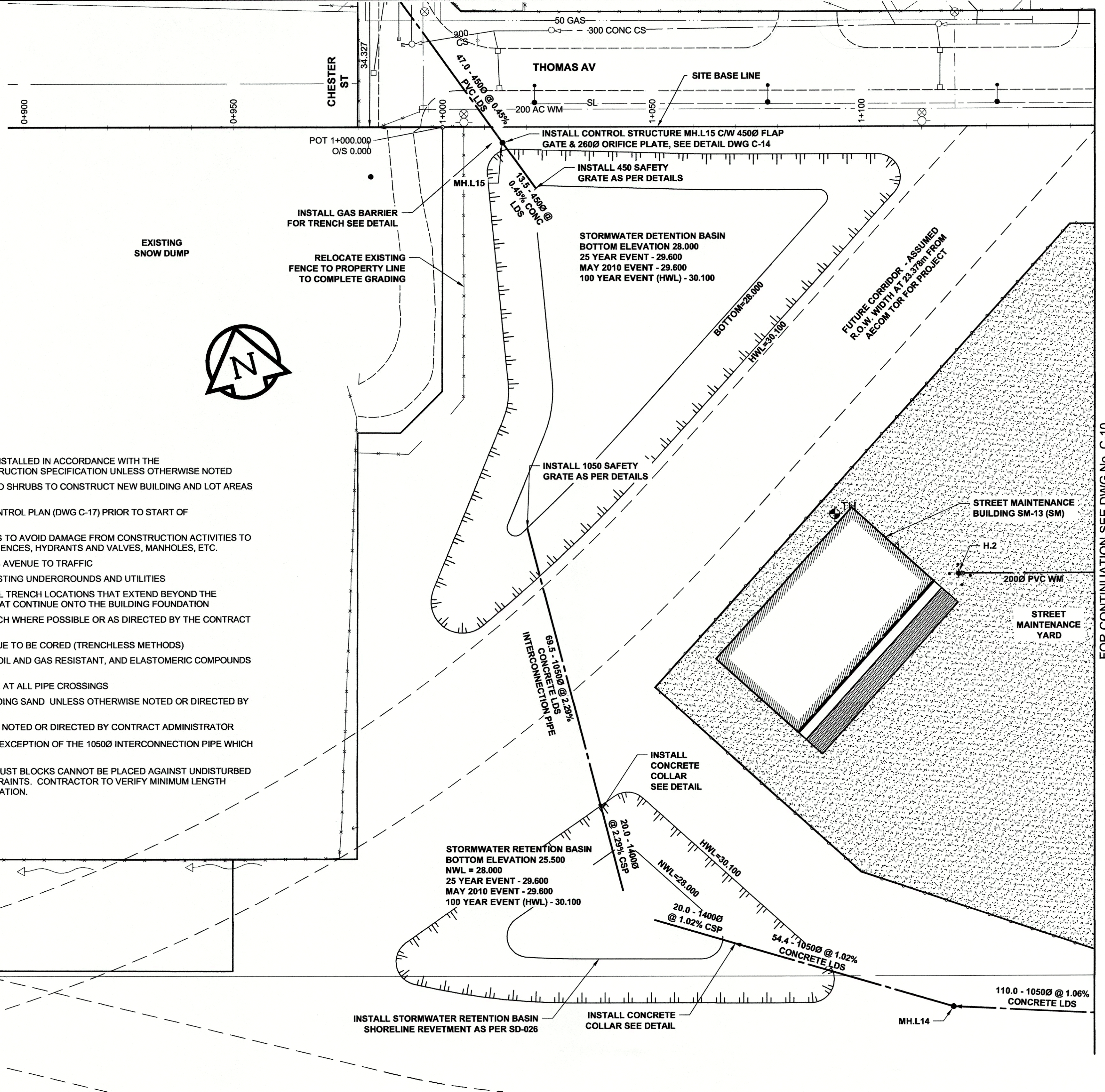


**PLAN**  
SCALE: 1:600

**CONSTRUCTION NOTES:**

1. ALL WORK AND MATERIALS TO BE SUPPLIED AND INSTALLED IN ACCORDANCE WITH THE LATEST EDITION OF THE CITY OF WINNIPEG CONSTRUCTION SPECIFICATION UNLESS OTHERWISE NOTED
2. CONTRACTOR SHALL REMOVE EXISTING TREES AND SHRUBS TO CONSTRUCT NEW BUILDING AND LOT AREAS AS NOTED ON THE DRAWINGS
3. CONTRACTOR SHALL REFER TO THE EROSION CONTROL PLAN (DWG C-17) PRIOR TO START OF CONSTRUCTION
4. CONTRACTOR SHALL TAKE PRECAUTIONARY STEPS TO AVOID DAMAGE FROM CONSTRUCTION ACTIVITIES TO EXISTING FEATURES SUCH AS LAMP STANDARDS, FENCES, HYDRANTS AND VALVES, MANHOLES, ETC.
5. CONTRACTOR IS NOT ALLOWED TO CLOSE THOMAS AVENUE TO TRAFFIC
6. CONTRACTOR IS RESPONSIBLE FOR LOCATING EXISTING UNDERGROUNDS AND UTILITIES
7. CONTRACTOR TO CONSTRUCT GAS BARRIER AT ALL TRENCH LOCATIONS THAT EXTEND BEYOND THE PROPERTY LIMITS AND ALL TRENCH LOCATIONS THAT CONTINUE ONTO THE BUILDING FOUNDATION
8. ALL PIPE TO BE INSTALLED IN A COMMON TRENCH WHERE POSSIBLE OR AS DIRECTED BY THE CONTRACT ADMINISTRATOR
9. ALL PIPE CONNECTIONS CROSSING THOMAS AVENUE TO BE CORED (TRENCHLESS METHODS)
10. ALL WM PIPE TO UTILIZE PIPE GASKETS THAT ARE OIL AND GAS RESISTANT, AND ELASTOMERIC COMPOUNDS TO BE RATED EXCELLENT
11. MAINTAIN A MINIMUM 300MM VERTICAL CLEARANCE AT ALL PIPE CROSSINGS
12. PIPE STANDARD BEDDING TO BE CLASS B C/W BEDDING SAND UNLESS OTHERWISE NOTED OR DIRECTED BY CONTRACT ADMINISTRATOR
13. PIPE BACKFILL TO BE CLASS 3 UNLESS OTHERWISE NOTED OR DIRECTED BY CONTRACT ADMINISTRATOR
14. ALL CONCRETE PIPE SHALL BE CLASS IV WITH THE EXCEPTION OF THE 1050Ø INTERCONNECTION PIPE WHICH SHALL BE CLASS V
15. FOR WATERMAIN INSTALLATION, IF CONCRETE THRUST BLOCKS CANNOT BE PLACED AGAINST UNDISTURBED SOIL, CONTRACTOR TO UTILIZE MECHANICAL RESTRAINTS. CONTRACTOR TO VERIFY MINIMUM LENGTH REQUIREMENTS WITH SUPPLIER PRIOR TO INSTALLATION.



**PLAN (WEST)**

SCALE: 1:600

**METRIC**  
WHOLE NUMBERS INDICATE MILLIMETRES  
DECIMALIZED NUMBERS INDICATE METRES

150 WM		150 WM		HYDRO, STREET LIGHTING		150 WM		WATERMAIN		150 WM	
○	HYDRANT	●	MTS	—	TRAFFIC SIGNALS	—	HYDRANT	—	HYDRANT	—	HYDRANT
○	VALVE	●	GAS	—	SURVEY BAR	—	VALVE	—	VALVE	—	VALVE
○	LAND DRAINAGE SEWER	●	FENCE	—	POLE	—	LAND DRAINAGE SEWER	—	LAND DRAINAGE SEWER	—	LAND DRAINAGE SEWER
○	WASTEWATER SEWER	●	POLE	—	CURB STOP	—	WASTEWATER SEWER	—	WASTEWATER SEWER	—	WASTEWATER SEWER
○	MANHOLE	●	CURB STOP	—	GUY ANCHOR	—	MANHOLE	—	MANHOLE	—	MANHOLE
○	CATCH BASIN	●	REDUCER	—	LIGHT STANDARD	—	CATCH BASIN	—	CATCH BASIN	—	CATCH BASIN
○	CURB INLET	●	COUPLER	—	TREE	—	CURB INLET	—	CURB INLET	—	CURB INLET
○	REDUCER	●	ANODE	—	EXISTING	—	REDUCER	—	REDUCER	—	REDUCER
○	COUPLER	●	EXISTING	—	LEGEND - PLAN	—	COUPLER	—	COUPLER	—	COUPLER
○	ANODE	●	NEW	—	LEGEND - PROFILE	—	ANODE	—	ANODE	—	ANODE
○	EXISTING	●	NEW	—	LEGEND - PLAN	—	EXISTING	—	EXISTING	—	EXISTING
○	LEGEND - PLAN	●	NEW	—	LEGEND - PROFILE	—	LEGEND - PLAN	—	LEGEND - PROFILE	—	LEGEND - PROFILE

**LOCATION APPROVED**  
UNDERGROUND STRUCTURES

SUPR. U/G STRUCTURES COMMITTEE DATE

NOTE:  
LOCATION OF UNDERGROUND STRUCTURES AS SHOWN ARE BASED ON THE BEST INFORMATION AVAILABLE BUT NO GUARANTEE IS GIVEN THAT ALL EXISTING UTILITIES ARE SHOWN OR THAT THE GIVEN LOCATIONS ARE EXACT. CONFIRMATION OF EXISTENCE AND EXACT LOCATION OF ALL SERVICES MUST BE OBTAINED FROM THE INDIVIDUAL UTILITIES BEFORE PROCEEDING WITH CONSTRUCTION.

No.	REVISIONS	YYMMDD	BY
1	ISSUED FOR CONSTRUCTION	12/04/02	RPB

**MORRISON HERSHFIELD**

DESIGNED BY: RPB  
CHECKED BY: WRJ  
DRAWN BY: DML  
APPROVED BY: BWB  
HOR. SCALE: AS SHOWN  
VERT. SCALE: AS SHOWN  
RELEASED FOR CONSTRUCTION  
DATE: November 24, 2011

**APCGM**  
Certificate of Authorization  
MORRISON HERSHFIELD  
No. 1736 Date: 4/24/12

PROFESSIONAL'S SEAL  
PROVINCE OF MANITOBA  
REGISTERED PROFESSIONAL ENGINEER  
R.P. BRUCE

**ERNST HANSCH CONSTRUCTION LTD.**

**PUBLIC WORKS EAST YARD**  
#960 THOMAS AVENUE  
SURFACE AND UNDERGROUND WORKS  
-UNDERGROUND WORKS-  
SITE SERVICING PLAN (WEST)

CITY DRAWING NUMBER: N/A  
SHEET: 9 OF 17  
DRAWING NUMBER: C-09  
REV: 1

FOR CONTINUATION SEE DWG No. C-10