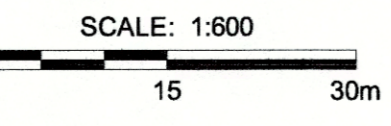
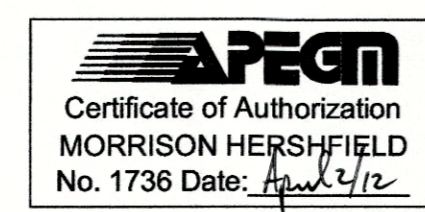


FOR CONTINUATION SEE DWG No. C-03

**PLAN (EAST)**



SITE BASE LINE		
POINT/STATION	NORTHING	EASTING
POT 1+000.000	10154.056	9380.157
POT 1+791.983	9963.015	10148.753



**LOCATION APPROVED UNDERGROUND STRUCTURES**

SUPR. U/G STRUCTURES DATE COMMITTEE

**NOTE:**  
LOCATION OF UNDERGROUND STRUCTURES AS SHOWN ARE BASED ON THE BEST INFORMATION AVAILABLE BUT NO GUARANTEE IS GIVEN THAT ALL EXISTING UTILITIES ARE SHOWN OR THAT THE GIVEN LOCATIONS ARE EXACT. CONFIRMATION OF EXISTENCE AND EXACT LOCATION OF ALL SERVICES MUST BE OBTAINED FROM THE INDIVIDUAL UTILITIES BEFORE PROCEEDING WITH CONSTRUCTION.

No.	REVISIONS	YY/MM/DD	BY
1	ISSUED FOR CONSTRUCTION	12/04/02	RPB

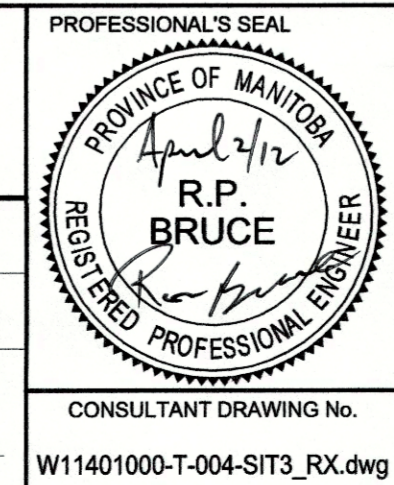
**MORRISON HERSHFIELD**

DESIGNED BY: WRJ  
DRAWN BY: DML

CHECKED BY: RPB  
APPROVED BY: BWB

HOR. SCALE: AS SHOWN  
VERT. SCALE: AS SHOWN

DATE: November 24, 2011



**ERNST HANSCH CONSTRUCTION LTD.**

**PUBLIC WORKS EAST YARD**  
#960 THOMAS AVENUE  
SURFACE AND UNDERGROUND WORKS

-SURFACE WORKS-  
GENERAL SITE PLAN (EAST)

CITY DRAWING NUMBER: N/A  
SHEET: 4 OF 17  
DRAWING NUMBER: C-04  
REV: 1

**METRIC**  
WHOLE NUMBERS INDICATE MILLIMETRES  
DECIMALIZED NUMBERS INDICATE METRES