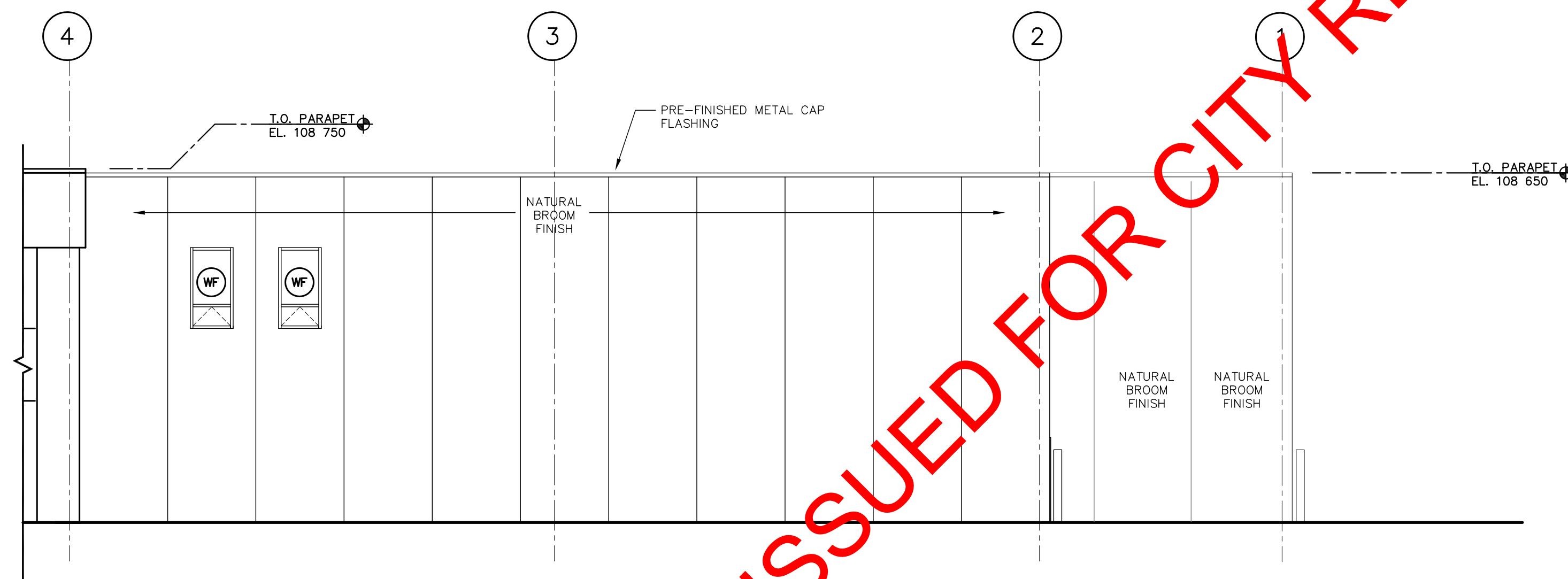


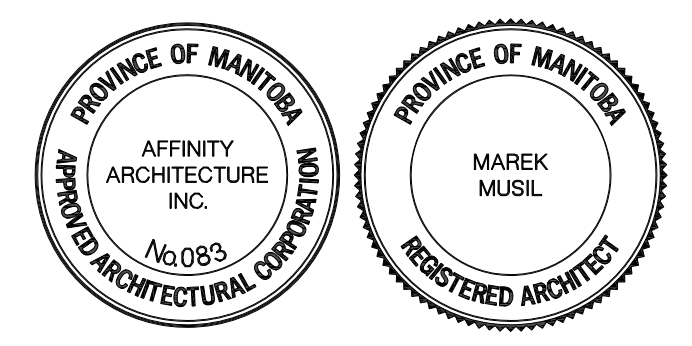
3 NORTH BUILDING ELEVATION CONT.  
4.2 SCALE 1:100



4 NORTH BUILDING ELEVATION CONT.  
4.2 SCALE 1:100

ISSUED FOR CITY REVIEW 11-06-2012

| REV | DESCRIPTION               | DATE         | BY |
|-----|---------------------------|--------------|----|
| 5   | ISSUED FOR REVIEW         | 08 JUNE 2012 | MM |
| 4   | ISSUED FOR DRAWING REVIEW | JUN 1, 2012  | MM |
| 3   | DRAWING UPDATE            | APR 18, 2012 | IC |
| 2   | ISSUED FOR 66% REVIEW     | MAR 05, 2012 | MD |
| 1   | ISSUED FOR 33% REVIEW     | 05 JAN 2012  | MD |



3 TERRACON PLACE  
WINNIPEG, CANADA R2J 4B3  
TEL. (204) 233 7881  
FAX (204) 233 4733  
general@ehansch.com  
www.ehansch.com

CLIENT: CITY OF WINNIPEG  
PUBLIC WORKS DEPARTMENT  
PROJECT NUMBER: 1511  
DRAWN BY: MD  
DATE: JAN. 5, 2012  
SCALE: AS SHOWN

PROJECT TITLE:  
CITY OF WINNIPEG  
PUBLIC WORKS EAST YARD COMPLEX  
MAIN OFFICE & GARAGES  
SHEET TITLE:  
EXTERIOR BUILDING ELEVATIONS

SHEET NUMBER:  
**A4.2**  
REVISION NUMBER: RO