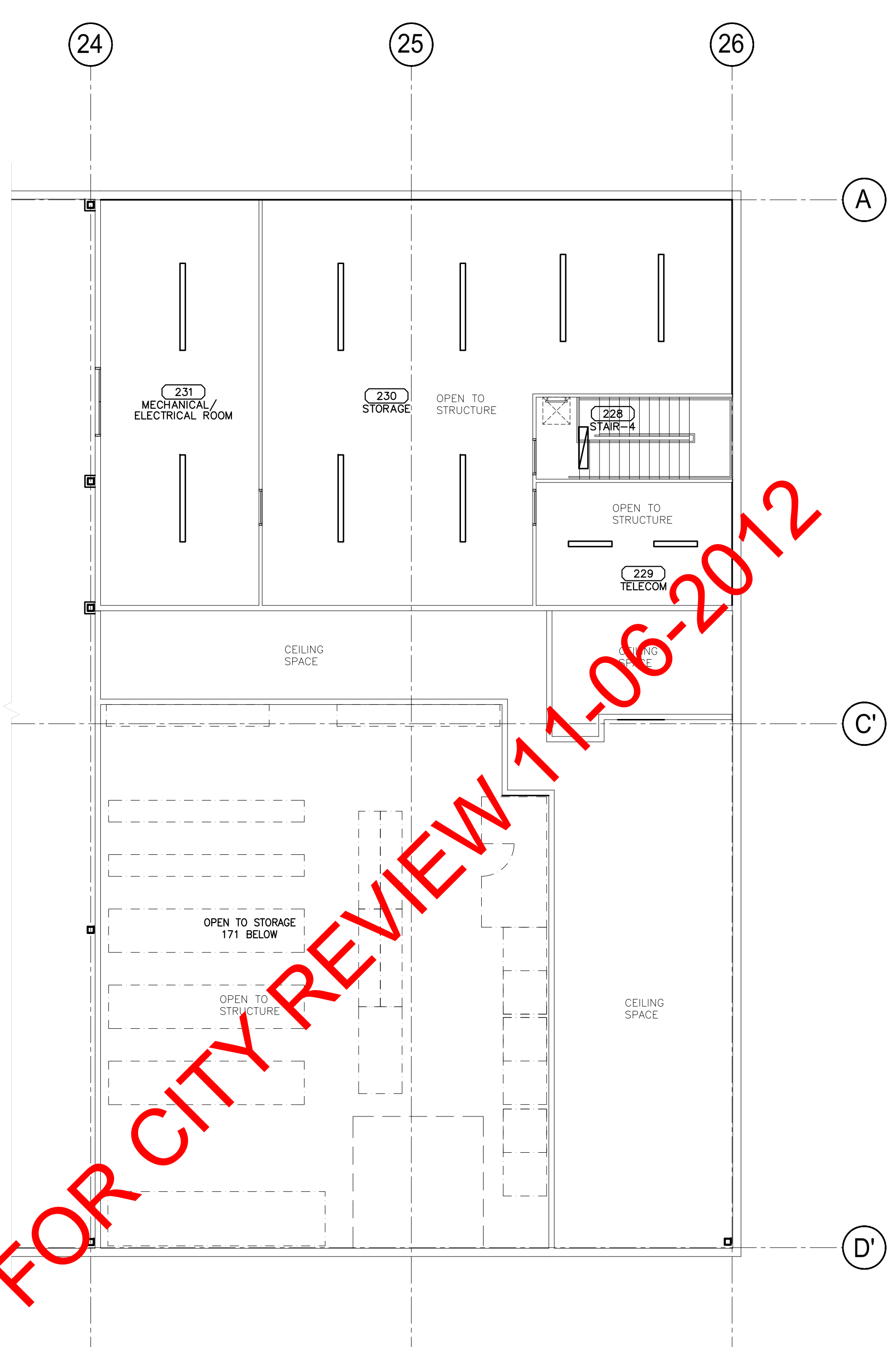
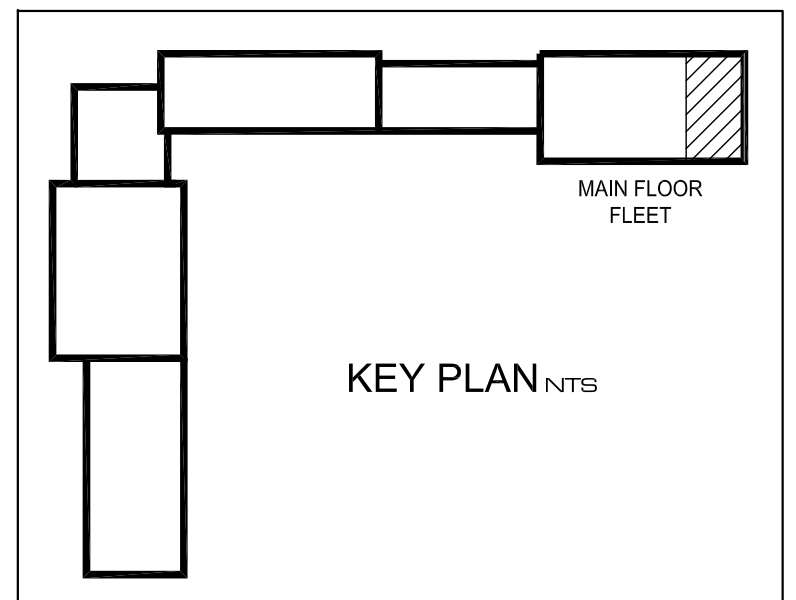
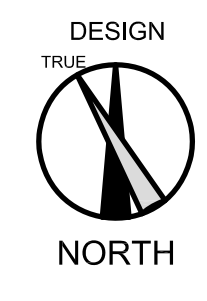


1 MAIN FLOOR REFLECTED CEILING PLAN (FLEET)
A3.2 SCALE: 1:100

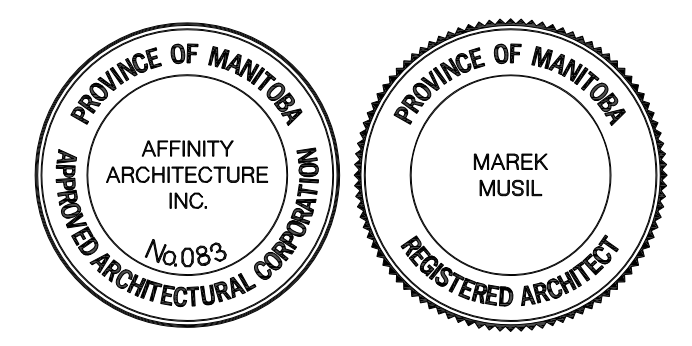


2 SECOND FLOOR REFLECTED CEILING PLAN (FLEET)
A3.2 SCALE: 1:100

ISSUED FOR CITY REVIEW 11-06-2012



REV	DESCRIPTION	DATE	BY
5	ISSUED FOR REVIEW	08 JUNE 2012	MM
4	ISSUED FOR DRAWING REVIEW	JUN 1, 2012	MM
3	DRAWING UPDATE	APR 18, 2012	IC
2	ISSUED FOR 66% REVIEW	MAR 05, 2012	MD
1	ISSUED FOR 33% REVIEW	05 JAN 2012	MD



3 TERRACON PLACE
WINNIPEG, CANADA R2J 4B3
TEL. (204) 233 7881
FAX (204) 233 4733
general@ehansch.com
www.ehansch.com

CLIENT: CITY OF WINNIPEG
PUBLIC WORKS DEPARTMENT
PROJECT NUMBER: 1511
DRAWN BY: MD
DATE: JAN. 5, 2012
SCALE: AS SHOWN

PROJECT TITLE:
CITY OF WINNIPEG
PUBLIC WORKS EAST YARD COMPLEX
MAIN OFFICE & GARAGES
SHEET TITLE:
REFLECTED CEILING PLANS
FLEET BLOCK

SHEET NUMBER:
A3.2
REVISION NUMBER: R0