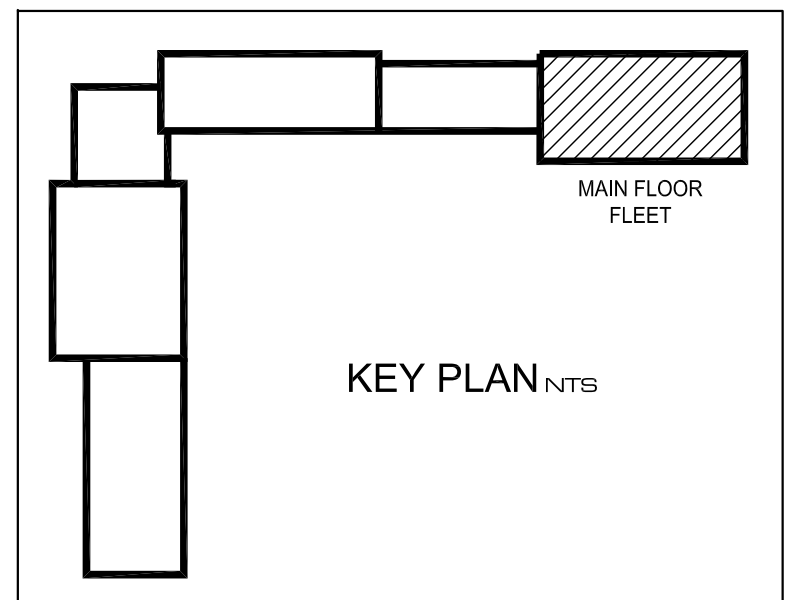
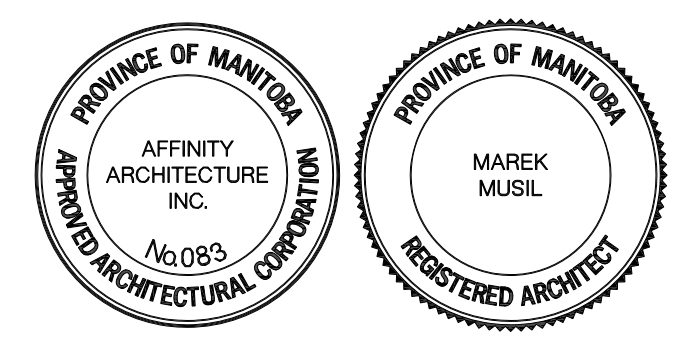


1 PARTIAL MAIN FLOOR PLAN (FLEET MANAGEMENT)  
2.3 SCALE: 1:100

- KEY NOTES:**
- 1 PROVIDE 19mm PLYWOOD TO 2440mm AFF. SHOWN THUS (---)
- ROOM 171 EQUIPMENT LIST**
1. SMALL PARTS SHELVES (N.I.C.)
  2. MEDIUM PARTS SHELVES (N.I.C.)
  3. LARGE PARTS SHELVES (N.I.C.)
  4. POWER TOOLS CAGED AREA
  5. TIRE RACK (N.I.C.)
  6. SHELVING OVER OIL BLEEDERS
  7. SHOP SPECIALTY TOOLING SHELVING
  8. OIL BLEEDERS
  9. PURCHASED PARTS SHELVING



REV	DESCRIPTION	DATE	BY
5	ISSUED FOR REVIEW	08 JUNE 2012	MM
4	ISSUED FOR DRAWING REVIEW	JUN 1, 2012	MM
3	DRAWING UPDATE	APR 18, 2012	IC
2	ISSUED FOR 66% REVIEW	MAR 05, 2012	MD
1	ISSUED FOR 33% REVIEW	05 JAN 2012	MD



3 TERRACON PLACE  
WINNIPEG, CANADA R2J 4B3  
TEL. (204) 233 7881  
FAX (204) 233 4733  
general@ehansch.com  
www.ehansch.com

CLIENT: CITY OF WINNIPEG  
PUBLIC WORKS DEPARTMENT  
PROJECT NUMBER: 1511  
DRAWN BY: MD  
DATE: JAN. 5, 2012  
SCALE: AS SHOWN

PROJECT TITLE:  
CITY OF WINNIPEG  
PUBLIC WORKS EAST YARD COMPLEX  
MAIN OFFICE & GARAGES  
SHEET TITLE:  
MAIN FLOOR PARTIAL PLAN  
FLEET MANAGEMENT

SHEET NUMBER:  
**A2.3**  
REVISION NUMBER: R0