

- CONSTRUCTION NOTES**
- 1) CURB REPLACEMENT AS DIRECTED BY THE CONTRACT ADMINISTRATOR
 - 2) ALL STREET RADIUS CURB UNDER 15M RADIUS SHALL BE REPLACED AS MODIFIED OR AS DIRECTED BY THE CONTRACT ADMINISTRATOR
 - 3) PAVEMENT REPAIRS SHOWN ARE ONLY A REPRESENTATIVE SAMPLE OF THE TENDERED QUANTITIES
 - 4) ASPHALT TIE-INS ON APPROACHES TO BE DETERMINED IN THE FIELD BY THE CONTRACT ADMINISTRATOR.
 - 5) ALL BULLNOSES TO HAVE SLOPED FACE.

WARNING

IF POWER EQUIPMENT OR EXPLOSIVES ARE TO BE USED FOR EXCAVATION ON THIS PROJECT THE CONTRACTOR MUST:

- 1) OBTAIN CLEARANCE FROM THE GAS UTILITY PRIOR TO EXCAVATION.
- 2) TAKE PRECAUTION TO AVOID DAMAGE TO GAS UTILITY INSTALLATIONS.

SEE PROVINCIAL REGULATION 210/72 FOR DETAILS

PRELIMINARY
NOT TO BE USED FOR CONSTRUCTION

METRIC
WHOLE NUMBERS INDICATE MILLIMETRES
DECIMALIZED NUMBERS INDICATE METRES

BID OPPORTUNITY NO. 391-2012

⊕	HYDRANT	◆	---	LDS/WWS	---	---	NORTH GUTTER	---
⊙	VALVE	●	---	WATERMAIN	---	---	CENTER LINE	---
⊠	CURB STOP	⊙	---	GAS	---	---	SOUTH GUTTER	---
---	CONCRETE SIDEWALK	---	---	TRAFFIC SIGNALS	---	---		---
○	O.L.S.	●	---	CONCRETE	---	---		---
○	MANHOLE	●	---	CURB RENEWAL	---	---		---
□	CATCH BASIN	■	231.000	ELEVATIONS	231.000	---		---
△	CURB INLET	▲	---	PROPERTY LINE	---	---		---
☆	HYDRO POLE	⊕	---	SURVEY BAR	---	---		---
○→	TRAFFIC SIGNAL POLE	⊕	---	GEODETIC BENCH MARK	---	---		---
---		---	---	RAMP CURB	---	---		---
EXISTING	LEGEND - PLAN	PROPOSED	EXISTING	LEGEND - PLAN	PROPOSED	EXISTING	LEGEND - PROFILE	PROPOSED

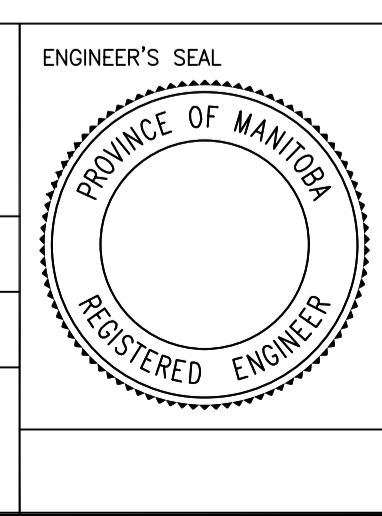
LOCATION APPROVED UNDERGROUND STRUCTURES

SUPR. U/G STRUCTURES COMMITTEE DATE

NOTE:
LOCATION OF UNDERGROUND STRUCTURES AS SHOWN ARE BASED ON THE BEST INFORMATION AVAILABLE. BUT NO GUARANTEE IS GIVEN THAT ALL EXISTING UTILITIES ARE SHOWN OR THAT THE GIVEN LOCATIONS ARE EXACT. CONFIRMATION OF EXISTENCE AND EXACT LOCATION OF ALL SERVICES MUST BE OBTAINED FROM THE INDIVIDUAL UTILITIES BEFORE PROCEEDING WITH CONSTRUCTION.

B.M. ELEV.					
NO.	REVISIONS	DATE	BY		

ENGINEERING DIVISION TECHNOLOGY SERVICES BRANCH 106 - 1155 PACIFIC AVE			
DESIGNED BY	A.P.	CHECKED BY	R.K.D.
DRAWN BY	A.P. R.W.	APPROVED BY	R.T.C.
HOR. SCALE:	1 : 250		
VERTICAL:	N.T.S.		
DATE	2012/07/10		



THE CITY OF WINNIPEG
PUBLIC WORKS DEPARTMENT

ST. MARY AVENUE
FROM COLONY STREET TO SPENCE STREET
INTERSECTION IMPROVEMENT AND ASSOCIATED WORKS

CITY DRAWING NUMBER SE-12-44
SHEET 4 OF 6

4