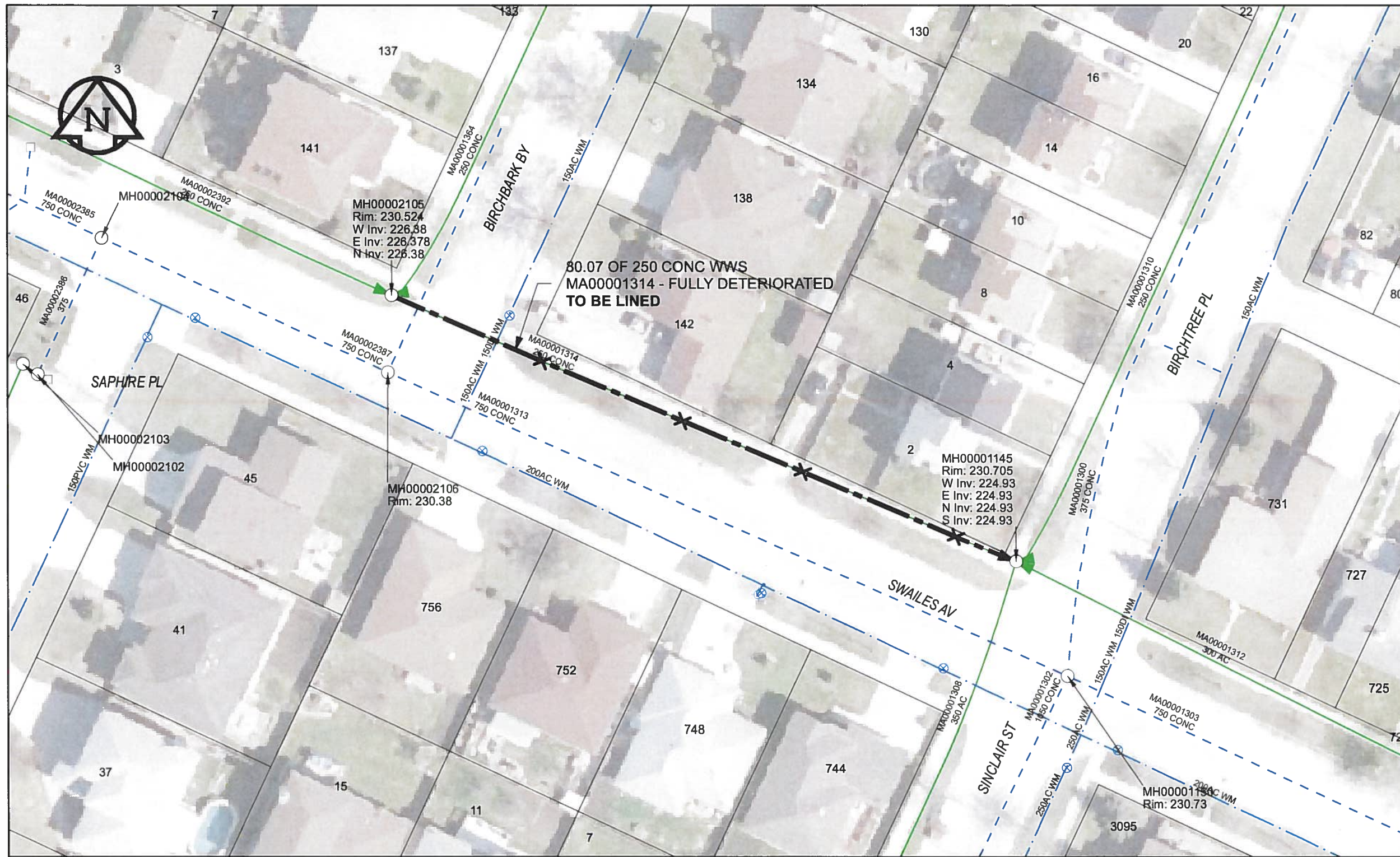


B SIZE 11" X 17" (279mm x 432mm)



**SEWER JUNCTION INFORMATION**

REF MH*	DIST FROM* REF MH	SIZE*	CLOCK AT*
MH00002105	19.40	200Ø	12
MH00002105	37.40	150Ø	12
MH00002105	52.80	150Ø	12
MH00002105	72.40	150Ø	12

\*JUNCTION INFORMATION FROM VIDEO INSPECTION

**WARNING**

IF POWER EQUIPMENT OR EXPLOSIVES ARE TO BE USED FOR EXCAVATION ON THIS PROJECT, THE CONTRACTOR MUST:

- 1) NOTIFY THE GAS COMPANY OF THE PROPOSED LOCATION OF EXCAVATION.
- 2) TAKE PRECAUTION TO AVOID DAMAGE TO GAS COMPANY INSTALLATIONS.

SEE PROVINCIAL REGULATION 140/92 FOR DETAILS

**APEGM**  
 Certificate of Authorization  
 AECOM Canada Ltd.  
 No. 4671 Date: \_\_\_\_\_

**METRIC**  
 WHOLE NUMBERS INDICATE MILLIMETRES  
 DECIMALIZED NUMBERS INDICATE METRES

0 2.5 5 10 15 20  
 Meters

BID OPPORTUNITY NO. 374-2012

AECOM REVIEW DRFT CHK  
 FILE NAME: 251.pdf Saved By: JZ

**LOCATION APPROVED UNDERGROUND STRUCTURES**

SUPR. U/G STRUCTURES	DATE	COMMITTEE

**NOTE:**  
 LOCATION OF UNDERGROUND STRUCTURES AS SHOWN ARE BASED ON THE BEST INFORMATION AVAILABLE. BUT NO GUARANTEE IS GIVEN THAT ALL EXISTING UTILITIES ARE SHOWN OR THAT THE GIVEN LOCATIONS ARE EXACT. CONFIRMATION OF EXISTENCE AND EXACT LOCATION OF ALL SERVICES MUST BE OBTAINED FROM THE INDIVIDUAL UTILITIES BEFORE PROCEEDING WITH CONSTRUCTION.

Can-Net GPS Reference Station WINN/810

NO.	ISSUED FOR CONSTRUCTION	YY/MM/DD	BY
0	ISSUED FOR CONSTRUCTION	12/06/18	JZ

**AECOM**

DESIGNED BY	ALD	CHECKED BY	cm
DRAWN BY	JZ	APPROVED BY	BTW
HOR. SCALE	1:500	RELEASED FOR CONSTRUCTION	LOG 2012
VERT. SCALE	N/A	DATE	12/06/18

PROFESSIONAL'S SEAL

PROVINCE OF MANITOBA  
 K. FITCHETT  
 REGISTERED ENGINEER

CONSULTANT DRAWING NO.  
 60250984-01-C-251-R0X.mxd

**THE CITY OF WINNIPEG**  
**WATER AND WASTE DEPARTMENT**

2012 SEWER RENEWALS  
 BY CIPP LINING  
 CONTRACT 9  
 SWAILES AV  
 MH AT BIRCHBARK BY (W LEG) TO  
 MH @BIRCHTREE PL

SHEET 81 OF 84  
 CITY DRAWING NUMBER  
 10251 REV 0