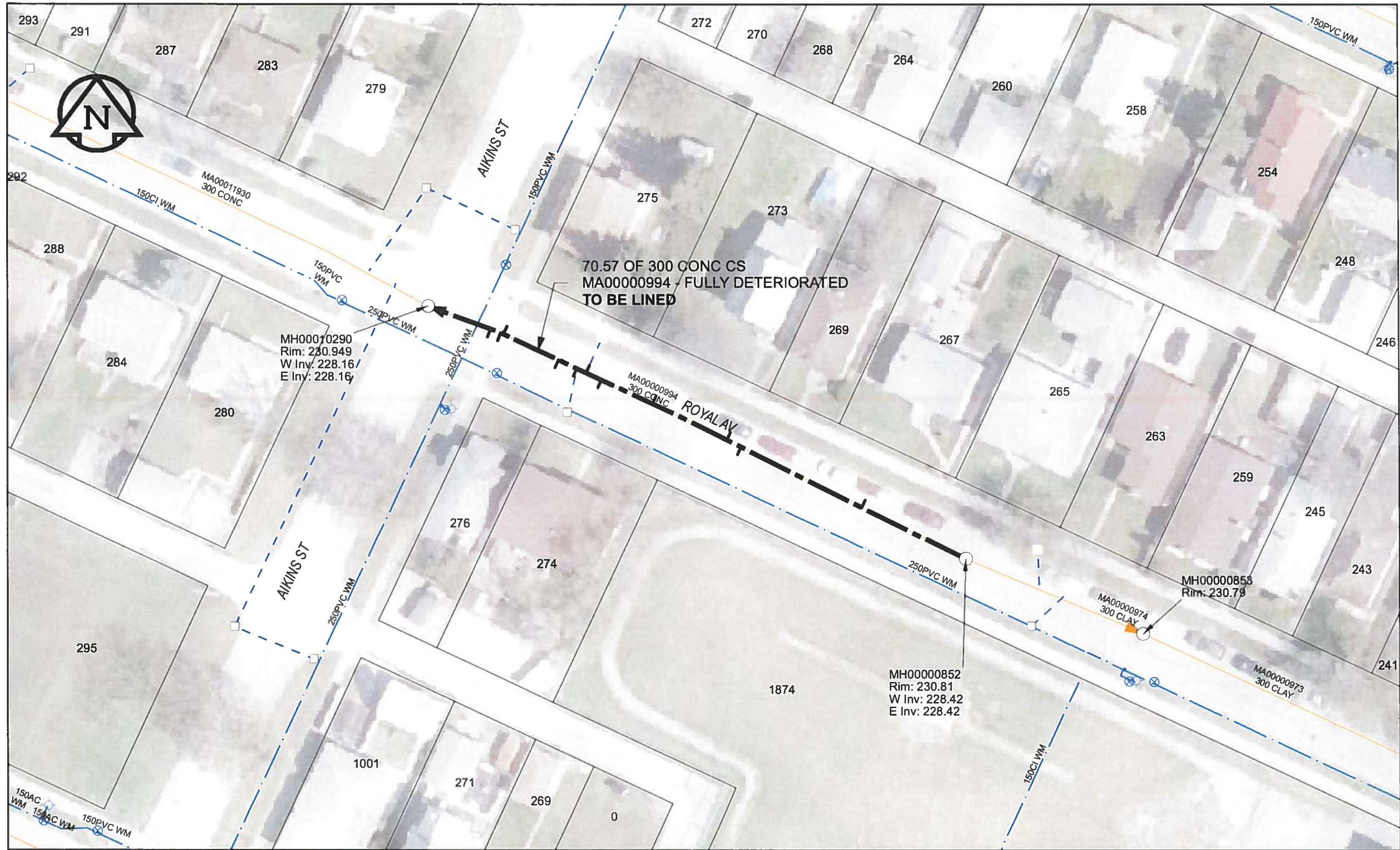


B SIZE 11" X 17" (279mm x 432mm)



SEWER JUNCTION INFORMATION

REF MH*	DIST FROM* REF MH	SIZE*	CLOCK AT*
MH0000852	13.80	150Ø	02
MH0000852	29.80	150Ø	10
MH0000852	31.70	150Ø	03
MH0000852	41.50	150Ø	03
MH0000852	48.20	150Ø	10
MH0000852	50.20	150Ø	02
MH0000852	51.40	150Ø	10
MH0000852	53.80	150Ø	10
MH0000852	61.10	150Ø	02
MH0000852	61.40	150Ø	11
MH0000852	62.70	150Ø	10

*JUNCTION INFORMATION FROM VIDEO INSPECTION

WARNING
 IF POWER EQUIPMENT OR EXPLOSIVES ARE TO BE USED FOR EXCAVATION ON THIS PROJECT, THE CONTRACTOR MUST:
 1) NOTIFY THE GAS COMPANY OF THE PROPOSED LOCATION OF EXCAVATION.
 2) TAKE PRECAUTION TO AVOID DAMAGE TO GAS COMPANY INSTALLATIONS.
 SEE PROVINCIAL REGULATION 140/92 FOR DETAILS

AECOM
 Certificate of Authorization
 AECOM Canada Ltd.
 No. 4671 Date: *June 11/12*

METRIC
 WHOLE NUMBERS INDICATE MILLIMETRES
 DECIMALIZED NUMBERS INDICATE METRES
 0 2.5 5 10 15 20
 Meters
 BID OPPORTUNITY NO. 374-2012

LOCATION APPROVED UNDERGROUND STRUCTURES		Can-Net GPS Reference Station WINN/810	
SUPR. U/G STRUCTURES COMMITTEE	DATE		
NOTE: LOCATION OF UNDERGROUND STRUCTURES AS SHOWN ARE BASED ON THE BEST INFORMATION AVAILABLE. BUT NO GUARANTEE IS GIVEN THAT ALL EXISTING UTILITIES ARE SHOWN OR THAT THE GIVEN LOCATIONS ARE EXACT. CONFIRMATION OF EXISTENCE AND EXACT LOCATION OF ALL SERVICES MUST BE OBTAINED FROM THE INDIVIDUAL UTILITIES BEFORE PROCEEDING WITH CONSTRUCTION.			
NO.	ISSUED FOR CONSTRUCTION	12/06/18	JZ
NO.	REVISIONS	YY/MM/DD	BY

AECOM

DESIGNED BY	ALD	CHECKED BY	<i>cm</i>
DRAWN BY	JZ	APPROVED BY	<i>brw</i>
HOR. SCALE	1:500	RELEASED FOR CONSTRUCTION	<i>[Signature]</i>
VERT. SCALE	N/A	DATE	<i>12/06/25</i>

PROFESSIONAL'S SEAL
 PROVINCE OF MANITOBA
[Signature]
 K. FITCHETT
 REGISTERED ENGINEER
 CONSULTANT DRAWING NO.
 60250984-01-C-246-R0X.mxd

THE CITY OF WINNIPEG
 WATER AND WASTE DEPARTMENT

2012 SEWER RENEWALS BY CIPP LINING CONTRACT 9
 ROYAL AV
 1ST MH E OF AIKINS ST TO MH AT AIKINS ST

SHEET 76 OF 84
 CITY DRAWING NUMBER
10246 REV 0

AECOM REVIEW DRFT CHK
 FILE NAME: 246.pdf Saved By: JZ