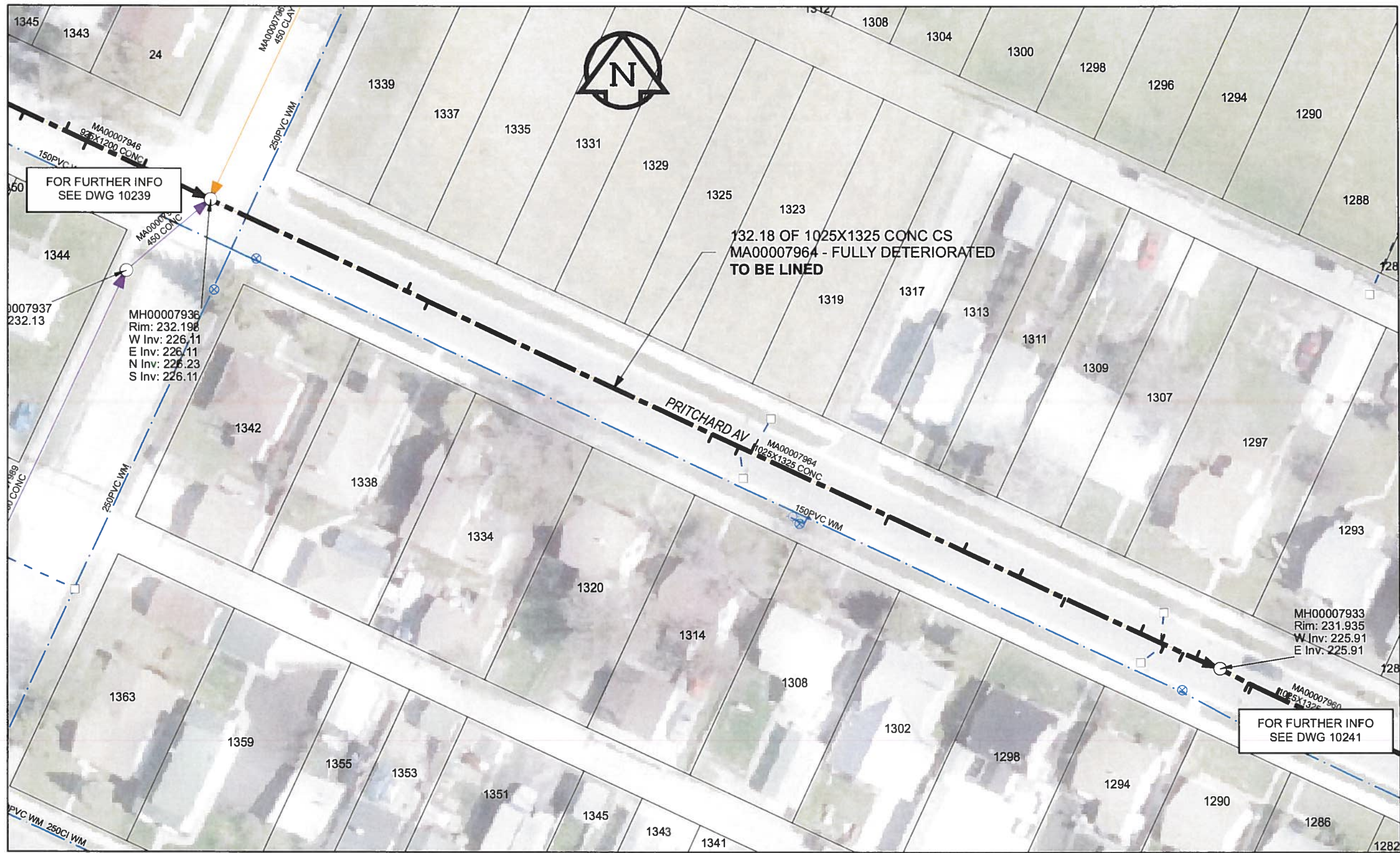


B SIZE 11" X 17" (279mm x 432mm)



SEWER JUNCTION INFORMATION

REF MH*	DIST FROM* REF MH	SIZE*	CLOCK AT*
MH00007936	25.7	150Ø	10
MH00007936	28.5	150Ø	02
MH00007936	65.8	150Ø	01
MH00007936	69.3	150Ø	02
MH00007936	70.9	150Ø	10
MH00007936	88.9	150Ø	01
MH00007936	98.7	150Ø	11
MH00007936	106	150Ø	11
MH00007936	112	150Ø	01
MH00007936	121.8	150Ø	11
MH00007936	124.5	150Ø	11
MH00007936	125	150Ø	01
MH00007936	127.4	150Ø	01
MH00007936	129.1	150Ø	11

* JUNCTION INFORMATION FROM VIDEO INSPECTION

WARNING
 IF POWER EQUIPMENT OR EXPLOSIVES ARE TO BE USED FOR EXCAVATION ON THIS PROJECT, THE CONTRACTOR MUST:
 1) NOTIFY THE GAS COMPANY OF THE PROPOSED LOCATION OF EXCAVATION.
 2) TAKE PRECAUTION TO AVOID DAMAGE TO GAS COMPANY INSTALLATIONS.
 SEE PROVINCIAL REGULATION 140/92 FOR DETAILS

AECOM
 Certificate of Authorization
 AECOM Canada Ltd.
 No. 4671 Date: *June 2012*

METRIC
 WHOLE NUMBERS INDICATE MILLIMETRES
 DECIMALIZED NUMBERS INDICATE METRES
 0 2.5 5 10 15 20
 Meters
 BID OPPORTUNITY NO. 374-2012

AECOM REVIEW DRFT CHK AD

FILE NAME: 240.pdf Saved By: JZ

LOCATION APPROVED UNDERGROUND STRUCTURES

SUPR. U/G STRUCTURES COMMITTEE	DATE

NOTE:
 LOCATION OF UNDERGROUND STRUCTURES AS SHOWN ARE BASED ON THE BEST INFORMATION AVAILABLE. BUT NO GUARANTEE IS GIVEN THAT ALL EXISTING UTILITIES ARE SHOWN OR THAT THE GIVEN LOCATIONS ARE EXACT. CONFIRMATION OF EXISTENCE AND EXACT LOCATION OF ALL SERVICES MUST BE OBTAINED FROM THE INDIVIDUAL UTILITIES BEFORE PROCEEDING WITH CONSTRUCTION.

Can-Net GPS Reference Station WINN/810

NO.	REVISIONS	YY/MM/DD	BY
0	ISSUED FOR CONSTRUCTION	12/06/18	JZ

AECOM

DESIGNED BY	ALD	CHECKED BY	<i>cm</i>
DRAWN BY	JZ	APPROVED BY	<i>BFW</i>
HOR. SCALE	1:500	RELEASED FOR CONSTRUCTION	<i>25</i>
VERT. SCALE	N/A	DATE	<i>06-26-17</i>
DATE	<i>12/06/18</i>		

PROFESSIONAL'S SEAL
 PROVINCE OF MANITOBA
K. FITCHETT
 REGISTERED ENGINEER
 CONSULTANT DRAWING NO.
 60250984-01-C-240-R0X.mxd



**THE CITY OF WINNIPEG
 WATER AND WASTE DEPARTMENT**

**2012 SEWER RENEWALS
 BY CIPP LINING
 CONTRACT 9
 PRITCHARD AV
 MH AT SHAUGHNESSY TO
 1ST MH W OF MCNICHOL ST**

SHEET 70 OF 84
 CITY DRAWING NUMBER
10240 REV 0