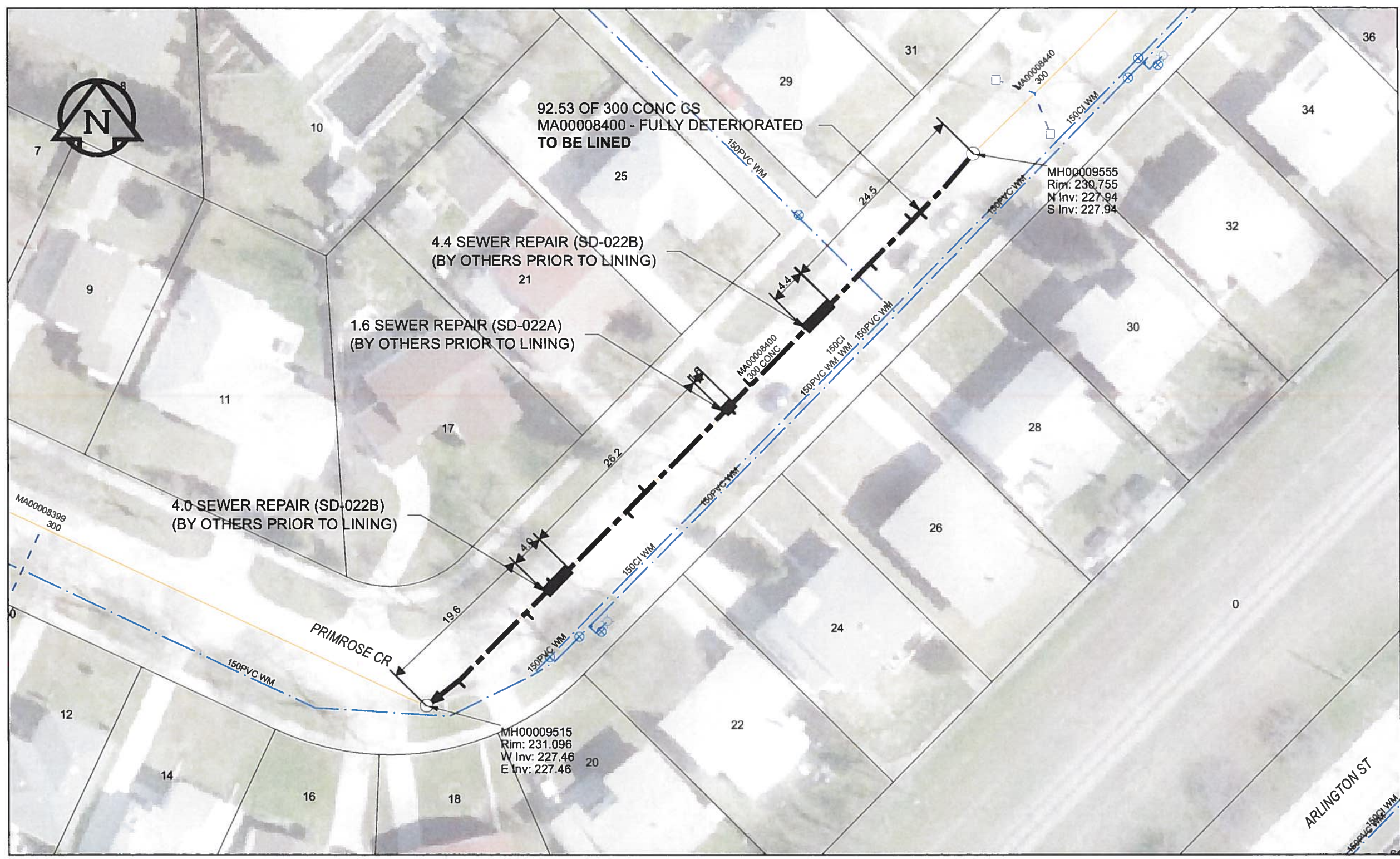


B SIZE 11" X 17" (279mm x 432mm)



SEWER JUNCTION INFORMATION

REF MH*	DIST FROM* REF MH	SIZE*	CLOCK AT*
MH00009555	9.4	150Ø	10
MH00009555	10.8	150Ø	02
MH00009555	17.9	150Ø	10

*JUNCTION INFORMATION FROM VIDEO INSPECTION

SEWER JUNCTION INFORMATION

REF MH*	DIST FROM* REF MH	SIZE*	CLOCK AT*
MH00009515	4.8	150Ø	02
MH00009515	16.3	150Ø	02
MH00009515	20.9	150Ø	10
MH00009515	33.3	150Ø	02
MH00009515	36.5	150Ø	10
MH00009515	50.6	150Ø	01
MH00009515	54.3	150Ø	09

*JUNCTION INFORMATION FROM VIDEO INSPECTION

WARNING

IF POWER EQUIPMENT OR EXPLOSIVES ARE TO BE USED FOR EXCAVATION ON THIS PROJECT, THE CONTRACTOR MUST:

- 1) NOTIFY THE GAS COMPANY OF THE PROPOSED LOCATION OF EXCAVATION.
- 2) TAKE PRECAUTION TO AVOID DAMAGE TO GAS COMPANY INSTALLATIONS.

SEE PROVINCIAL REGULATION 140/92 FOR DETAILS

APEGM
Certificate of Authorization
AECOM Canada Ltd.
No. 4671 Date: *June 22/12*

METRIC
WHOLE NUMBERS INDICATE MILLIMETRES
DECIMALIZED NUMBERS INDICATE METRES

0 2.5 5 10 15 20
Meters

BID OPPORTUNITY NO. 374-2012

AECOM REVIEW DRAFT CHK AD

FILE NAME: 235.pdf Saved By: JZ

LOCATION APPROVED UNDERGROUND STRUCTURES

SUPR. U/G STRUCTURES DATE COMMITTEE

NOTE:
LOCATION OF UNDERGROUND STRUCTURES AS SHOWN ARE BASED ON THE BEST INFORMATION AVAILABLE. BUT NO GUARANTEE IS GIVEN THAT ALL EXISTING UTILITIES ARE SHOWN OR THAT THE GIVEN LOCATIONS ARE EXACT. CONFIRMATION OF EXISTENCE AND EXACT LOCATION OF ALL SERVICES MUST BE OBTAINED FROM THE INDIVIDUAL UTILITIES BEFORE PROCEEDING WITH CONSTRUCTION.

Can-Net GPS Reference Station WINN/810

NO.	ISSUED FOR CONSTRUCTION	DATE	BY
0	ISSUED FOR CONSTRUCTION	12/06/18	JZ
NO.	REVISIONS	YY/MM/DD	BY

AECOM

DESIGNED BY	ALD	CHECKED BY	<i>cm</i>
DRAWN BY	JZ	APPROVED BY	<i>brw</i>
HOR. SCALE	1:500	RELEASED FOR CONSTRUCTION	<i>XOG-2-12</i>
VERT. SCALE	N/A	DATE	<i>12/06/25</i>

PROFESSIONAL'S SEAL

PROVINCE OF MANITOBA
K. FITCHETT
REGISTERED ENGINEER

CONSULTANT DRAWING NO. 60250984-01-C-235-R0X.mxd

THE CITY OF WINNIPEG WATER AND WASTE DEPARTMENT

2012 WASTEWATER SEWER RENEWALS
BY CIPP LINING
CONTRACT 9
PRIMROSE CR (E LEG)
1ST MH N OF PRIMROSE CR (S LEG) TO
MH AT PRIMROSE CR (S LEG)

SHEET 65 OF 84
CITY DRAWING NUMBER
10235 REV 0