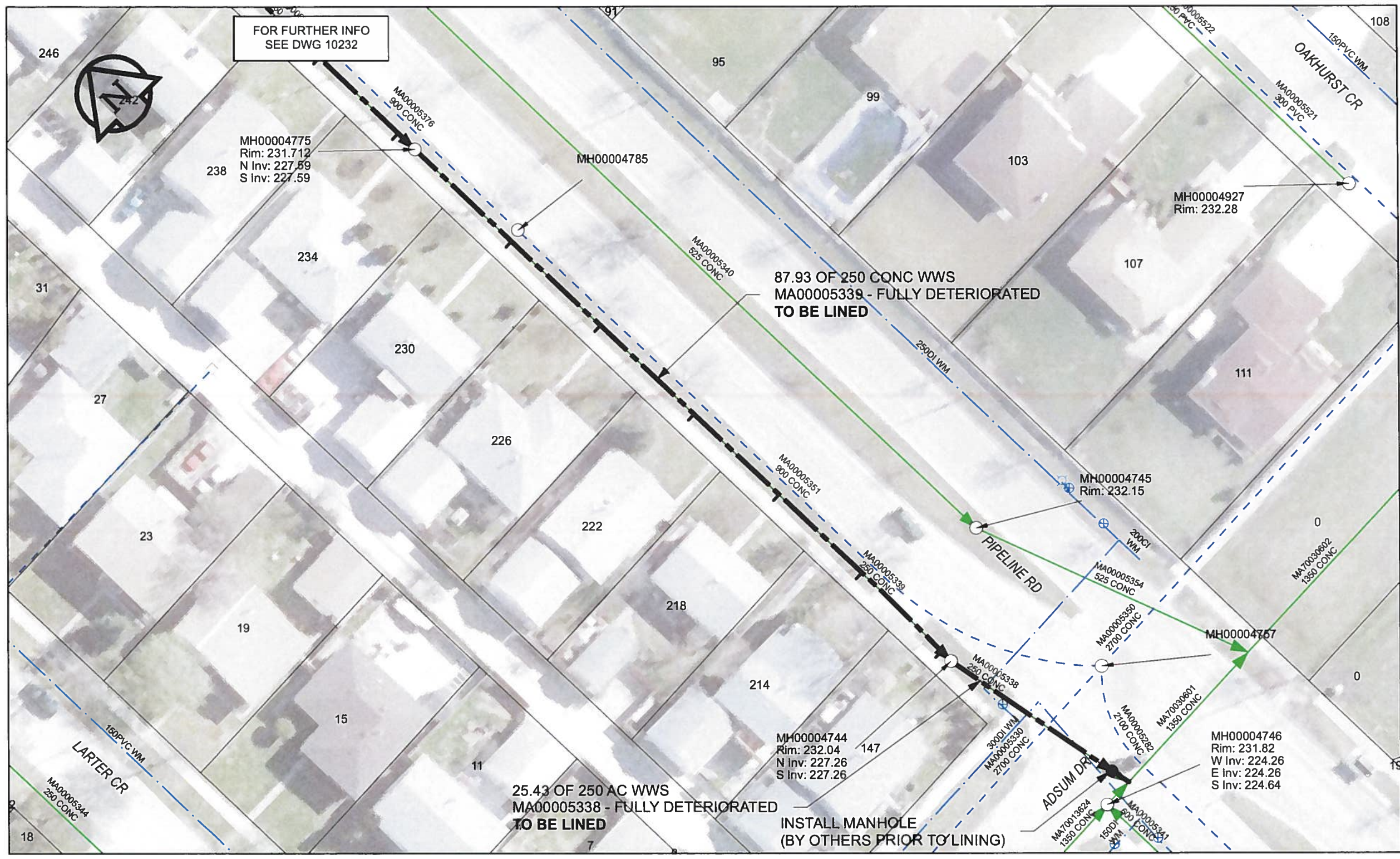


B SIZE 11" X 17" (279mm x 432mm)



SEWER JUNCTION INFORMATION

REF MH*	DIST FROM* REF MH	SIZE*	CLOCK AT*
MH00004775	15.8	150Ø	02
MH00004775	30.3	150Ø	01
MH00004775	45.6	150Ø	02
MH00004775	59.5	150Ø	02
MH00004775	73	150Ø	02
MH00004775	86.3	150Ø	01

*JUNCTION INFORMATION FROM VIDEO INSPECTION

WARNING

IF POWER EQUIPMENT OR EXPLOSIVES ARE TO BE USED FOR EXCAVATION ON THIS PROJECT, THE CONTRACTOR MUST:

- 1) NOTIFY THE GAS COMPANY OF THE PROPOSED LOCATION OF EXCAVATION
- 2) TAKE PRECAUTION TO AVOID DAMAGE TO GAS COMPANY INSTALLATIONS

SEE PROVINCIAL REGULATION 143/92 FOR DETAILS

AECOM

Certificate of Authorization

AECOM Canada Ltd.

No. 4671 Date: June 22/12

METRIC

WHOLE NUMBERS INDICATE MILLIMETRES
DECIMALIZED NUMBERS INDICATE METRES

0 2.5 5 10 15 20
Meters

BID OPPORTUNITY NO. 374-2012

AECOM REVIEW DRFT CHK AD

LOCATION APPROVED UNDERGROUND STRUCTURES

Can-Net GPS Reference Station WINN/810

SUPR. U/G STRUCTURES COMMITTEE DATE

NOTE:
LOCATION OF UNDERGROUND STRUCTURES AS SHOWN ARE BASED ON THE BEST INFORMATION AVAILABLE. BUT NO GUARANTEE IS GIVEN THAT ALL EXISTING UTILITIES ARE SHOWN OR THAT THE GIVEN LOCATIONS ARE EXACT. CONFIRMATION OF EXISTENCE AND EXACT LOCATION OF ALL SERVICES MUST BE OBTAINED FROM THE INDIVIDUAL UTILITIES BEFORE PROCEEDING WITH CONSTRUCTION.

NO.	ISSUED FOR CONSTRUCTION	DATE	BY
0	ISSUED FOR CONSTRUCTION	12/06/18	JZ
NO.	REVISIONS	YY/MM/DD	BY

AECOM

DESIGNED BY	ALD	CHECKED BY	cm
DRAWN BY	JZ	APPROVED BY	BW
HOR. SCALE	1:500	RELEASED FOR CONSTRUCTION	
VERT. SCALE	N/A		
DATE	12/06/18	DATE	6-22-12

PROFESSIONAL'S SEAL

PROVINCE OF MANITOBA

K. FITCHETT

REGISTERED ENGINEER

CONSULTANT DRAWING NO. 60250984-01-C-231-R0X.mxd

THE CITY OF WINNIPEG WATER AND WASTE DEPARTMENT

2012 SEWER RENEWALS BY CIPP LINING CONTRACT 9 PIPELINE RD

1ST MH S OF MARINER CR TO 1ST MH N OF ADSUM DR
1ST MH N OF ADSUM DR TO TIE-IN AT ADSUM DR

SHEET 61 OF 84

CITY DRAWING NUMBER 10231 REV 0