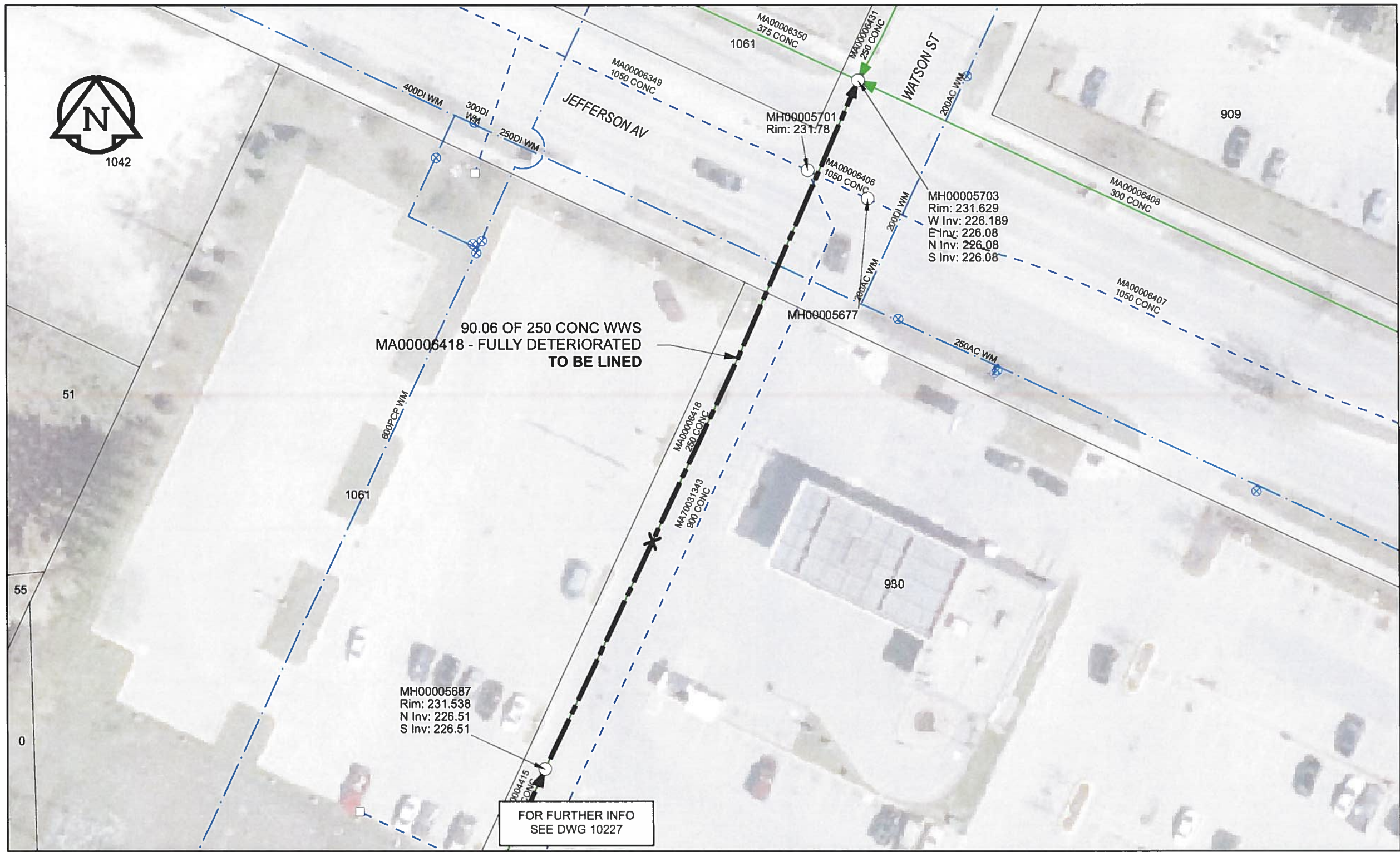


B SIZE 11" X 17" (279mm x 432mm)



SEWER JUNCTION INFORMATION

REF MH*	DIST FROM* REF MH	SIZE*	CLOCK AT*
MH00005687	30	150Ø	12

*JUNCTION INFORMATION FROM VIDEO INSPECTION

WARNING

IF POWER EQUIPMENT OR EXPLOSIVES ARE TO BE USED FOR EXCAVATION ON THIS PROJECT, THE CONTRACTOR MUST:

- 1) NOTIFY THE GAS COMPANY OF THE PROPOSED LOCATION OF EXCAVATION.
- 2) TAKE PRECAUTION TO AVOID DAMAGE TO GAS COMPANY INSTALLATIONS.

SEE PROVINCIAL REGULATION 140/92 FOR DETAILS

AECOM

Certificate of Authorization

AECOM Canada Ltd.

No. 4671 Date: *June 22/12*

METRIC

WHOLE NUMBERS INDICATE MILLIMETRES
DECIMALIZED NUMBERS INDICATE METRES

0 2.5 5 10 15 20

— Meters

BID OPPORTUNITY NO. 374-2012

FOR FURTHER INFO
SEE DWG 10227

AECOM REVIEW DRFT CHK
 FILE NAME: 228.pdf Saved By: JZ

LOCATION APPROVED UNDERGROUND STRUCTURES			
SUPR. U/G STRUCTURES	DATE		
NOTE: LOCATION OF UNDERGROUND STRUCTURES AS SHOWN ARE BASED ON THE BEST INFORMATION AVAILABLE. BUT NO GUARANTEE IS GIVEN THAT ALL EXISTING UTILITIES ARE SHOWN OR THAT THE GIVEN LOCATIONS ARE EXACT. CONFIRMATION OF EXISTENCE AND EXACT LOCATION OF ALL SERVICES MUST BE OBTAINED FROM THE INDIVIDUAL UTILITIES BEFORE PROCEEDING WITH CONSTRUCTION.			
0	ISSUED FOR CONSTRUCTION	12/06/18	JZ
NO.	REVISIONS	YY/MM/DD	BY

AECOM

Can-Net GPS Reference Station WINN/810

DESIGNED BY	ALD	CHECKED BY	<i>cm</i>
DRAWN BY	JZ	APPROVED BY	<i>AW</i>
HOR. SCALE	1:500	RELEASED FOR CONSTRUCTION	<i>[Signature]</i>
VERT. SCALE	N/A	CONSULTANT DRAWING NO.	60250984-01-C-228-R0X.mxd
DATE	<i>12/06/18</i>	DATE	<i>6-26-12</i>

PROFESSIONAL'S SEAL

PROVINCE OF MANITOBA

[Signature]
K. FITCHETT
REGISTERED ENGINEER

THE CITY OF WINNIPEG
WATER AND WASTE DEPARTMENT

2012 SEWER RENEWALS
BY CIPP LINING
CONTRACT 9
PARKING LOT
1ST MH S OF JEFFERSON AV TO
MH AT JEFFERSON AV

SHEET 58 OF 84
CITY DRAWING NUMBER
10228 REV 0