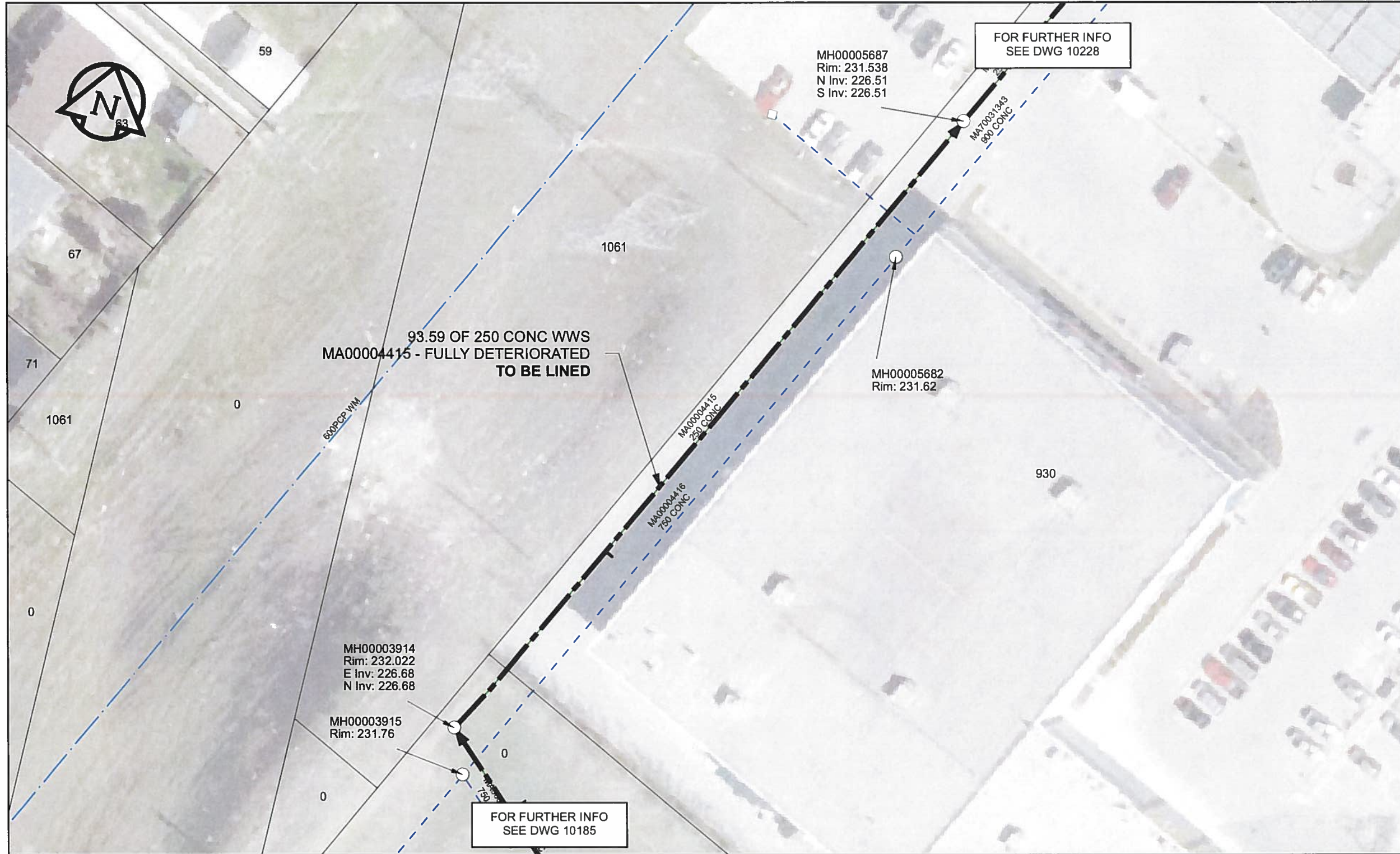


B SIZE 11" X 17" (279mm x 432mm)



**SEWER JUNCTION INFORMATION**

REF MH*	DIST FROM* REF MH	SIZE*	CLOCK AT*
MH00003914	27.50	150Ø	02

\*JUNCTION INFORMATION FROM VIDEO INSPECTION

**WARNING**

IF POWER EQUIPMENT OR EXPLOSIVES ARE TO BE USED FOR EXCAVATION ON THIS PROJECT, THE CONTRACTOR MUST:

- 1) NOTIFY THE GAS COMPANY OF THE PROPOSED LOCATION OF EXCAVATION.
- 2) TAKE PRECAUTION TO AVOID DAMAGE TO GAS COMPANY INSTALLATIONS.

SEE PROVINCIAL REGULATION 140/92 FOR DETAILS

**AECOM**

Certificate of Authorization

AECOM Canada Ltd.

No. 4671 Date: *June 22/12*

**METRIC**

WHOLE NUMBERS INDICATE MILLIMETRES  
DECIMALIZED NUMBERS INDICATE METRES

0 2.5 5 10 15 20  
Meters

BID OPPORTUNITY NO. 374-2012

AECOM REVIEW DRFT CHK AD

**LOCATION APPROVED UNDERGROUND STRUCTURES**

SUPR. U/G STRUCTURES COMMITTEE DATE

NOTE:  
LOCATION OF UNDERGROUND STRUCTURES AS SHOWN ARE BASED ON THE BEST INFORMATION AVAILABLE. BUT NO GUARANTEE IS GIVEN THAT ALL EXISTING UTILITIES ARE SHOWN OR THAT THE GIVEN LOCATIONS ARE EXACT. CONFIRMATION OF EXISTENCE AND EXACT LOCATION OF ALL SERVICES MUST BE OBTAINED FROM THE INDIVIDUAL UTILITIES BEFORE PROCEEDING WITH CONSTRUCTION.

NO.	REVISIONS	YYMM/DD	BY
0	ISSUED FOR CONSTRUCTION	12/06/18	JZ

Can-Net GPS Reference Station WINN/810

NO.	REVISIONS	YYMM/DD	BY
0	ISSUED FOR CONSTRUCTION	12/06/18	JZ

**AECOM**

DESIGNED BY	ALD	CHECKED BY	<i>cm</i>
DRAWN BY	JZ	APPROVED BY	<i>BTW</i>
HOR. SCALE	1:500	RELEASED FOR CONSTRUCTION	<i>[Signature]</i>
VERT. SCALE	N/A	DATE	<i>12/06/18</i>

PROFESSIONAL'S SEAL

PROVINCE OF MANITOBA  
*[Signature]*  
K. FITCHETT  
REGISTERED ENGINEER

CONSULTANT DRAWING NO.  
60250984-01-C-227-R0X.mxd

**THE CITY OF WINNIPEG WATER AND WASTE DEPARTMENT**

2012 SEWER RENEWALS BY CIPP LINING CONTRACT 9 PARKING LOT

2ND MH S OF JEFFERSON AV TO 1ST MH S OF JEFFERSON AV

SHEET 57 OF 84

CITY DRAWING NUMBER

**10227** REV 0