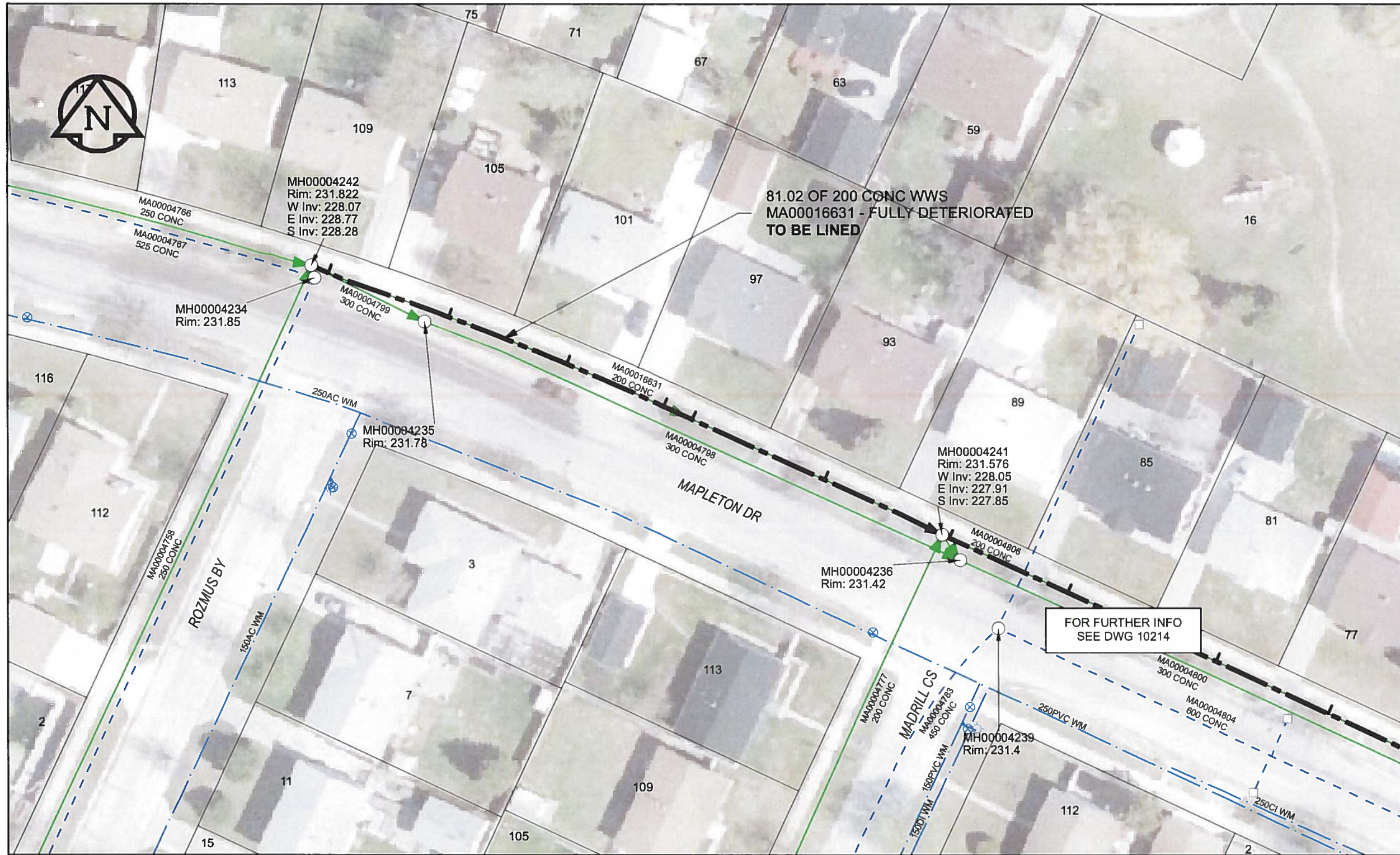


B SIZE 11" X 17" (279mm x 432mm)



SEWER JUNCTION INFORMATION

REF MH*	DIST FROM* REF MH	SIZE*	CLOCK AT*
MH00004242	2.2	150Ø	10
MH00004242	17.3	150Ø	10
MH00004242	32.3	150Ø	11
MH00004242	44.8	150Ø	10
MH00004242	48.5	150Ø	10
MH00004242	65.7	150Ø	10

*JUNCTION INFORMATION FROM VIDEO INSPECTION

WARNING

IF POWER EQUIPMENT OR EXPLOSIVES ARE TO BE USED FOR EXCAVATION ON THIS PROJECT, THE CONTRACTOR MUST:

- 1) NOTIFY THE GAS COMPANY OF THE PROPOSED LOCATION OF EXCAVATION.
- 2) TAKE PRECAUTION TO AVOID DAMAGE TO GAS COMPANY INSTALLATIONS.

SEE PROVINCIAL REGULATION 140/92 FOR DETAILS

AECOM

Certificate of Authorization

AECOM Canada Ltd.

No. 4671 Date: June 22/12

METRIC

WHOLE NUMBERS INDICATE MILLIMETRES
DECIMALIZED NUMBERS INDICATE METRES

0 2.5 5 10 15 20
Meters

BID OPPORTUNITY NO. 374-2012

AECOM REVIEW DRFT CHK AD

FILE NAME: 213.pdf Saved By: JZ

LOCATION APPROVED UNDERGROUND STRUCTURES

SUPR. U/G STRUCTURES COMMITTEE DATE

NOTE: LOCATION OF UNDERGROUND STRUCTURES AS SHOWN ARE BASED ON THE BEST INFORMATION AVAILABLE. BUT NO GUARANTEE IS GIVEN THAT ALL EXISTING UTILITIES ARE SHOWN OR THAT THE GIVEN LOCATIONS ARE EXACT. CONFIRMATION OF EXISTENCE AND EXACT LOCATION OF ALL SERVICES MUST BE OBTAINED FROM THE INDIVIDUAL UTILITIES BEFORE PROCEEDING WITH CONSTRUCTION.

NO.	ISSUED FOR CONSTRUCTION	DATE	BY
0	ISSUED FOR CONSTRUCTION	12/06/18	JZ
NO.	REVISIONS	YY/MM/DD	BY

Can-Net GPS Reference Station WINN/810



DESIGNED BY	ALD	CHECKED BY	cm
DRAWN BY	JZ	APPROVED BY	BTW
HOR. SCALE	1:500	RELEASED FOR CONSTRUCTION	
VERT. SCALE	N/A		
DATE	12/06/25	DATE	06-26-12

PROFESSIONAL'S SEAL



CONSULTANT DRAWING NO.
60250984-01-C-213-R0X.mxd



THE CITY OF WINNIPEG WATER AND WASTE DEPARTMENT

2012 SEWER RENEWALS
BY CIPP LINING
CONTRACT 9
MAPLETON DR
MH @ ROZMUS BY E LEG TO
MH @ MADRILL CS W LEG

SHEET 43 OF 84
CITY DRAWING NUMBER
10213 REV 0