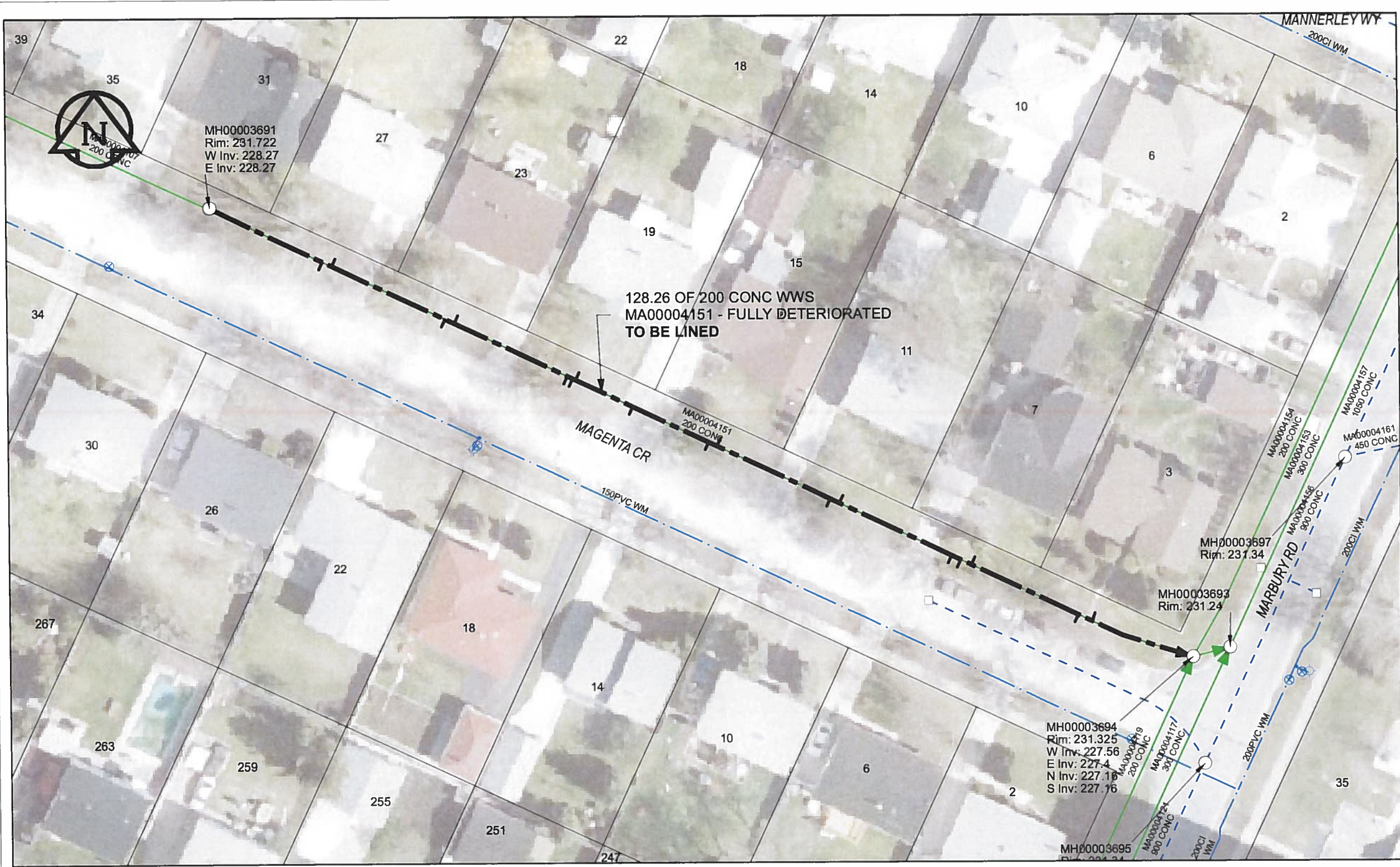


B SIZE 11" X 17" (279mm x 432mm)



SEWER JUNCTION INFORMATION

REF MH*	DIST FROM* REF MH	SIZE*	CLOCK AT*
MH00003691	14.80	150Ø	03
MH00003691	16.00	150Ø	10
MH00003691	30.80	150Ø	03
MH00003691	32.00	150Ø	09
MH00003691	46.80	150Ø	01
MH00003691	47.50	50Ø	01
MH00003691	47.90	150Ø	09
MH00003691	55.40	150Ø	01
MH00003691	65.30	150Ø	03
MH00003691	66.40	150Ø	09
MH00003691	81.20	150Ø	01
MH00003691	82.40	150Ø	10
MH00003691	97.10	150Ø	02
MH00003691	98.30	150Ø	02
MH00003691	99.70	150Ø	10
MH00003691	113.70	150Ø	02
MH00003691	115.50	150Ø	11

*JUNCTION INFORMATION FROM VIDEO INSPECTION

WARNING
 IF POWER EQUIPMENT OR EXPLOSIVES ARE TO BE USED FOR EXCAVATION ON THIS PROJECT, THE CONTRACTOR MUST:
 1) NOTIFY THE GAS COMPANY OF THE PROPOSED LOCATION OF EXCAVATION.
 2) TAKE PRECAUTION TO AVOID DAMAGE TO GAS COMPANY INSTALLATIONS.
 SEE PROVINCIAL REGULATION 140/92 FOR DETAILS

AECOM
 Certificate of Authorization
 AECOM Canada Ltd.
 No. 4671 Date: *June 21/12*

METRIC
 WHOLE NUMBERS INDICATE MILLIMETRES
 DECIMAL NUMBERS INDICATE METRES

0 2.5 5 10 15 20
 Meters

BID OPPORTUNITY NO. 374-2012

AECOM REVIEW DRFT CHK FILE NAME: 206.pdf Saved By: JZ

LOCATION APPROVED UNDERGROUND STRUCTURES		Can-Net GPS Reference Station WINN/810	
SUPR. U/G STRUCTURES	DATE		
NOTE: LOCATION OF UNDERGROUND STRUCTURES AS SHOWN ARE BASED ON THE BEST INFORMATION AVAILABLE. BUT NO GUARANTEE IS GIVEN THAT ALL EXISTING UTILITIES ARE SHOWN OR THAT THE GIVEN LOCATIONS ARE EXACT. CONFIRMATION OF ALL SERVICES MUST BE OBTAINED FROM THE INDIVIDUAL UTILITIES BEFORE PROCEEDING WITH CONSTRUCTION.			
0	ISSUED FOR CONSTRUCTION	12/06/18	JZ
NO.	REVISIONS	YY/MM/DD	BY

AECOM

DESIGNED BY	ALD	CHECKED BY	<i>cm</i>
DRAWN BY	JZ	APPROVED BY	<i>BTW</i>
HOR. SCALE	1:500	RELEASED FOR CONSTRUCTION	<i>12/06/21</i>
VERT. SCALE	N/A	DATE	<i>12/06/21</i>

PROFESSIONAL'S SEAL
 PROVINCE OF MANITOBA
FW2
 K.
FITCHETT
 REGISTERED ENGINEER
 CONSULTANT DRAWING NO.
 60250984-01-C-206-R0X.mxd

THE CITY OF WINNIPEG
WATER AND WASTE DEPARTMENT

2012 SEWER RENEWALS
 BY CIPP LINING
 CONTRACT 9
 MAGENTA CR (S LEG)
 1ST MH W OF MARBURY RD TO
 MH @ MARBURY RD (W PL)

SHEET 36 OF 84
 CITY DRAWING NUMBER
10206 REV 0