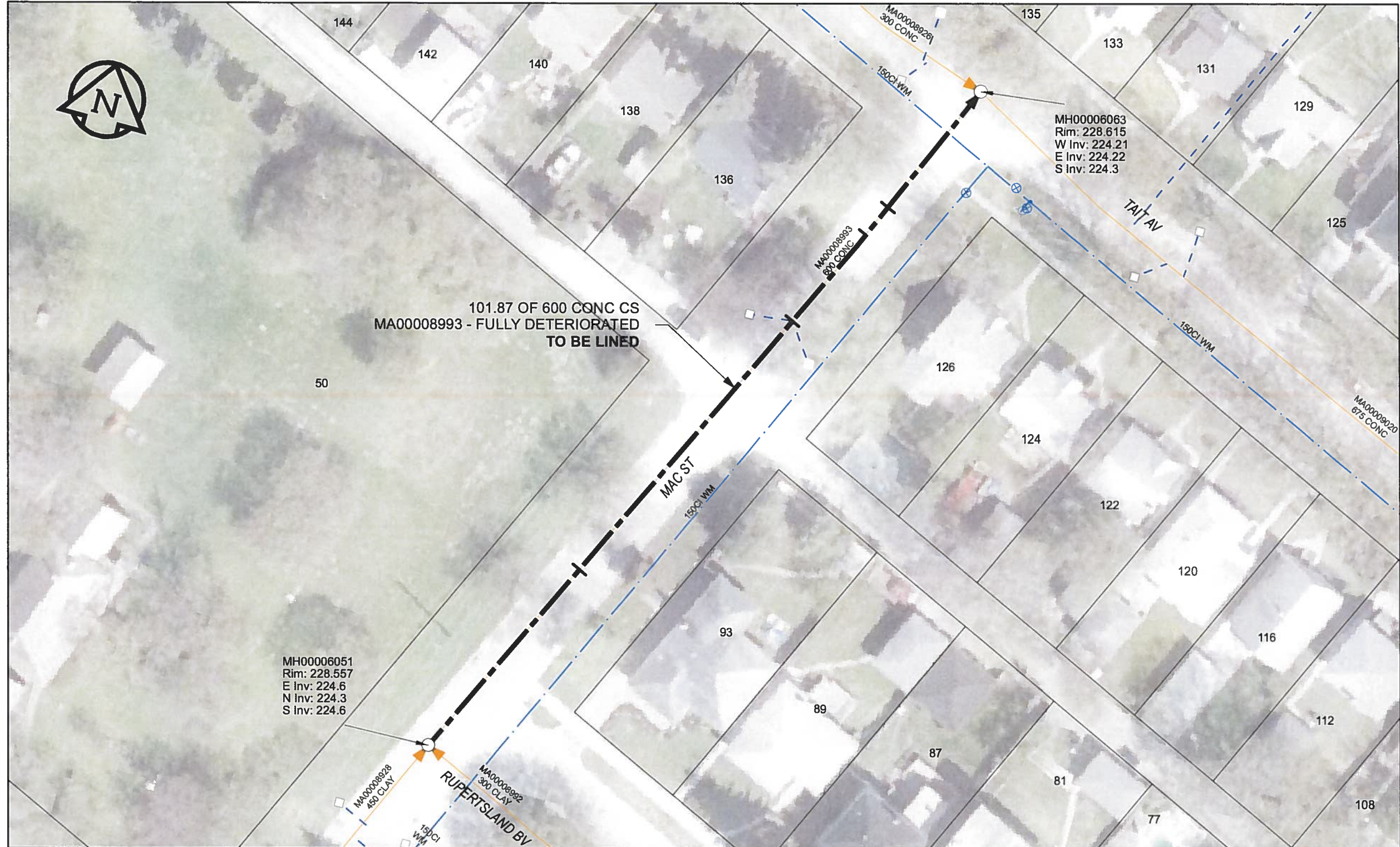


B SIZE 11" X 17" (279mm x 432mm)



**SEWER JUNCTION INFORMATION**

| REF MH*    | DIST FROM*<br>REF MH | SIZE* | CLOCK AT* |
|------------|----------------------|-------|-----------|
| MH00006051 | 27.6                 | 150Ø  | 11        |
| MH00006051 | 27.6                 | 150Ø  | 01        |
| MH00006051 | 66.6                 | 150Ø  | 01        |
| MH00006051 | 66.6                 | 150Ø  | 11        |
| MH00006051 | 80                   | 150Ø  | 11        |
| MH00006051 | 84.2                 | 150Ø  | 01        |
| MH00006051 | 84.2                 | 150Ø  | 11        |

\*JUNCTION INFORMATION FROM VIDEO INSPECTION

**WARNING**

IF POWER EQUIPMENT OR EXPLOSIVES ARE TO BE USED FOR EXCAVATION ON THIS PROJECT, THE CONTRACTOR MUST:

- 1) NOTIFY THE GAS COMPANY OF THE PROPOSED LOCATION OF EXCAVATION.
- 2) TAKE PRECAUTION TO AVOID DAMAGE TO GAS COMPANY INSTALLATIONS.

SEE PROVINCIAL REGULATION 140/92 FOR DETAILS

**AECOM**

Certificate of Authorization

AECOM Canada Ltd.

No. 4671 Date: *Jun 22/12*

**METRIC**

WHOLE NUMBERS INDICATE MILLIMETRES  
DECIMALIZED NUMBERS INDICATE METRES

0 2.5 5 10 15 20  
Meters

BID OPPORTUNITY NO. 374-2012

AECOM REVIEW DRIFT CHK AD

**LOCATION APPROVED UNDERGROUND STRUCTURES**

| SUPR. U/G STRUCTURES COMMITTEE | DATE |
|--------------------------------|------|
|                                |      |
|                                |      |
|                                |      |
|                                |      |
|                                |      |
|                                |      |
|                                |      |
|                                |      |
|                                |      |
|                                |      |

NOTE:  
LOCATION OF UNDERGROUND STRUCTURES AS SHOWN ARE BASED ON THE BEST INFORMATION AVAILABLE. BUT NO GUARANTEE IS GIVEN THAT ALL EXISTING UTILITIES ARE SHOWN OR THAT THE GIVEN LOCATIONS ARE EXACT. CONFIRMATION OF EXISTENCE AND EXACT LOCATION OF ALL SERVICES MUST BE OBTAINED FROM THE INDIVIDUAL UTILITIES BEFORE PROCEEDING WITH CONSTRUCTION.

Can-Net GPS Reference Station WINN/810

| NO. | ISSUED FOR CONSTRUCTION | DATE     | BY |
|-----|-------------------------|----------|----|
| 0   | ISSUED FOR CONSTRUCTION | 12/06/18 | JZ |
|     |                         |          |    |
|     |                         |          |    |
|     |                         |          |    |
|     |                         |          |    |
|     |                         |          |    |
|     |                         |          |    |
|     |                         |          |    |
|     |                         |          |    |
|     |                         |          |    |

**AECOM**

|             |                 |                           |                |
|-------------|-----------------|---------------------------|----------------|
| DESIGNED BY | ALD             | CHECKED BY                | <i>cm</i>      |
| DRAWN BY    | JZ              | APPROVED BY               | <i>STW</i>     |
| HOR. SCALE  | 1:500           | RELEASED FOR CONSTRUCTION | <i>18</i>      |
| VERT. SCALE | N/A             | DATE                      | <i>6-26-12</i> |
| DATE        | <i>12/06/25</i> |                           |                |

PROFESSIONAL'S SEAL

PROVINCE OF MANITOBA  
K. FITCHETT  
REGISTERED ENGINEER

CONSULTANT DRAWING NO.  
60250984-01-C-204-R0X.mxd

**THE CITY OF WINNIPEG WATER AND WASTE DEPARTMENT**

2012 SEWER RENEWALS BY CIPP LINING CONTRACT 9  
MAC ST  
MH AT RUPERTSLAND BV TO MH AT TAIT AV

SHEET 34 OF 84  
CITY DRAWING NUMBER  
**10204** REV 0