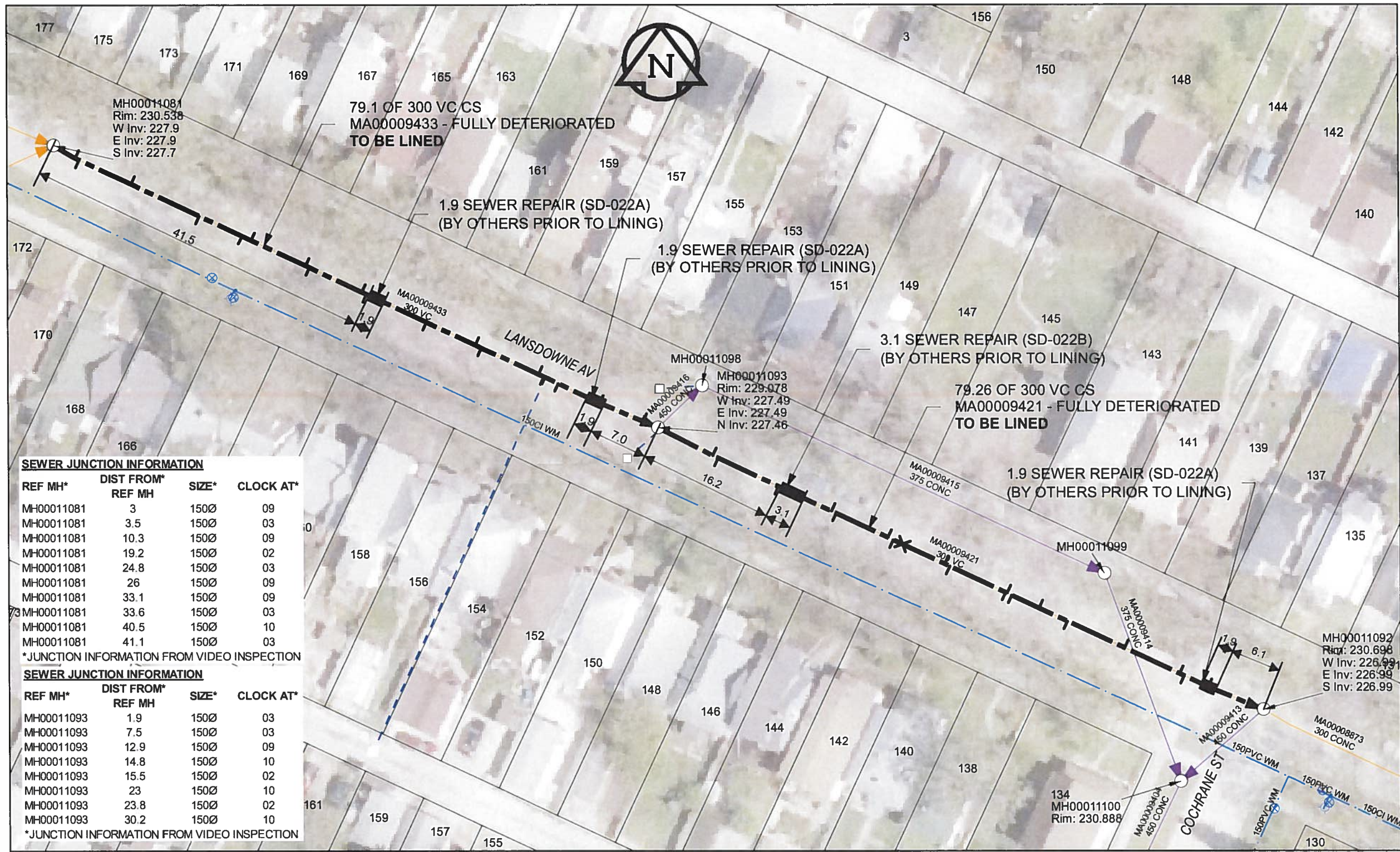


B SIZE 11" X 17" (279mm x 432mm)



SEWER JUNCTION INFORMATION

REF MH*	DIST FROM* REF MH	SIZE*	CLOCK AT*
MH00011093	7.3	150Ø	09
MH00011093	8	150Ø	03
MH00011093	15.9	150Ø	02

*JUNCTION INFORMATION FROM VIDEO INSPECTION

SEWER JUNCTION INFORMATION

REF MH*	DIST FROM* REF MH	SIZE*	CLOCK AT*
MH00011092	7.1	150Ø	03
MH00011092	10.2	150Ø	10
MH00011092	10.8	150Ø	02
MH00011092	18	150Ø	02
MH00011092	25.5	150Ø	10
MH00011092	29.2	150Ø	01
MH00011092	32.8	150Ø	10
MH00011092	33.4	150Ø	02
MH00011092	33.6	150Ø	10
MH00011092	40.9	150Ø	10
MH00011092	41.6	150Ø	02
MH00011092	47.1	150Ø	12
MH00011092	48.3	150Ø	10
MH00011092	49	150Ø	02
MH00011092	55.8	150Ø	10
MH00011092	56.4	150Ø	02

*JUNCTION INFORMATION FROM VIDEO INSPECTION

SEWER JUNCTION INFORMATION

REF MH*	DIST FROM* REF MH	SIZE*	CLOCK AT*
MH00011081	3	150Ø	09
MH00011081	3.5	150Ø	03
MH00011081	10.3	150Ø	09
MH00011081	19.2	150Ø	02
MH00011081	24.8	150Ø	03
MH00011081	26	150Ø	09
MH00011081	33.1	150Ø	09
MH00011081	33.6	150Ø	03
MH00011081	40.5	150Ø	10
MH00011081	41.1	150Ø	03

*JUNCTION INFORMATION FROM VIDEO INSPECTION

SEWER JUNCTION INFORMATION

REF MH*	DIST FROM* REF MH	SIZE*	CLOCK AT*
MH00011093	1.9	150Ø	03
MH00011093	7.5	150Ø	03
MH00011093	12.9	150Ø	09
MH00011093	14.8	150Ø	10
MH00011093	15.5	150Ø	02
MH00011093	23	150Ø	10
MH00011093	23.8	150Ø	02
MH00011093	30.2	150Ø	10

*JUNCTION INFORMATION FROM VIDEO INSPECTION

WARNING

IF POWER EQUIPMENT OR EXPLOSIVES ARE TO BE USED FOR EXCAVATION ON THIS PROJECT, THE CONTRACTOR MUST:

- 1) NOTIFY THE GAS COMPANY OF THE PROPOSED LOCATION OF EXCAVATION.
- 2) TAKE PRECAUTION TO AVOID DAMAGE TO GAS COMPANY INSTALLATIONS.

SEE PROVINCIAL REGULATION 140/92 FOR DETAILS

AECOM

Certificate of Authorization

AECOM Canada Ltd.

No. 4671 Date: June 22/12

METRIC

WHOLE NUMBERS INDICATE MILLIMETRES
DECIMALIZED NUMBERS INDICATE METRES

0 2.5 5 10 15 20
Meters

BID OPPORTUNITY NO. 374-2012

AECOM REVIEW DRFT CHK Saved By: JZ

LOCATION APPROVED UNDERGROUND STRUCTURES		Can-Net GPS Reference Station WINN/810	
SUPR. U/G STRUCTURES	DATE		
NOTE: LOCATION OF UNDERGROUND STRUCTURES AS SHOWN ARE BASED ON THE BEST INFORMATION AVAILABLE. BUT NO GUARANTEE IS GIVEN THAT ALL EXISTING UTILITIES ARE SHOWN OR THAT THE GIVEN LOCATIONS ARE EXACT. CONFIRMATION OF EXISTENCE AND EXACT LOCATION OF ALL SERVICES MUST BE OBTAINED FROM THE INDIVIDUAL UTILITIES BEFORE PROCEEDING WITH CONSTRUCTION.			
0	ISSUED FOR CONSTRUCTION	12/06/19	JZ
NO.	REVISIONS	YY/MM/DD	BY

AECOM	
DESIGNED BY	ALD
CHECKED BY	cm
DRAWN BY	JZ
APPROVED BY	BTW
HOR. SCALE	1:500
VERT. SCALE	N/A
DATE	12/06/19
RELEASED FOR CONSTRUCTION	
DATE	6-26-12

PROFESSIONAL'S SEAL

CONSULTANT DRAWING NO. 60250984-01-C-202-R0X.mxd

THE CITY OF WINNIPEG WATER AND WASTE DEPARTMENT

2012 SEWER RENEWALS BY CIPP LINING CONTRACT 9 LANSDOWNE AV (CL)

1ST MH E OF MAIN ST TO 2ND MH E OF MAIN ST
2ND MH E OF MAIN ST TO MH AT COCHRANE ST

SHEET 32 OF 84
CITY DRAWING NUMBER 10202 REV 0