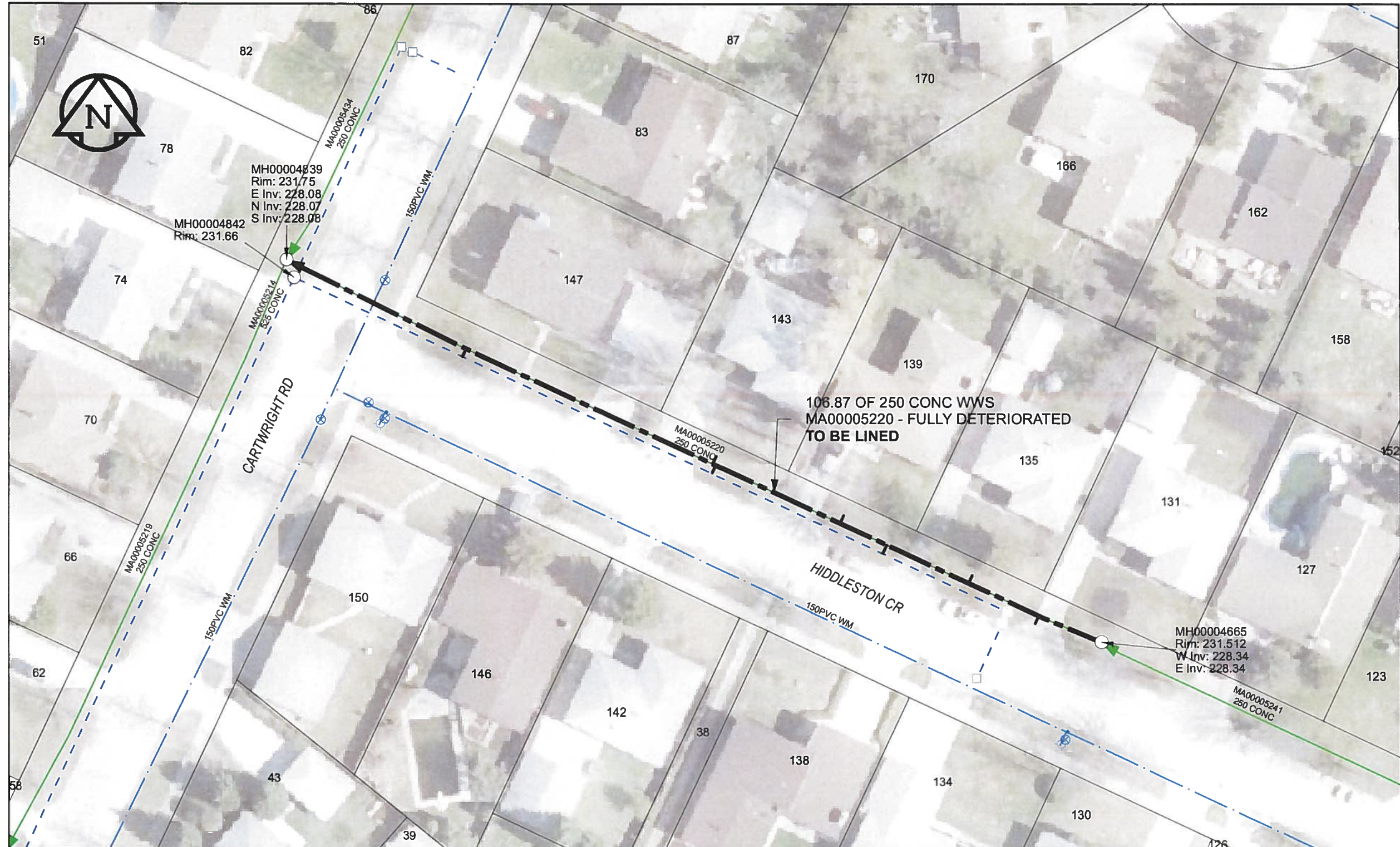


B SIZE 11" X 17" (279mm x 432mm)



SEWER JUNCTION INFORMATION			
REF MH*	DIST FROM* REF MH	SIZE*	CLOCK AT*
MH00004665	8.1	150Ø	10
MH00004665	17.3	150Ø	02
MH00004665	28	150Ø	10
MH00004665	34.1	150Ø	02
MH00004665	50.4	150Ø	10
MH00004665	50.8	150Ø	02
MH00004665	83.1	150Ø	11

*JUNCTION INFORMATION FROM VIDEO INSPECTION

WARNING
 IF POWER EQUIPMENT OR EXPLOSIVES ARE TO BE USED FOR EXCAVATION ON THIS PROJECT, THE CONTRACTOR MUST:
 1) NOTIFY THE GAS COMPANY OF THE PROPOSED LOCATION OF EXCAVATION.
 2) TAKE PRECAUTION TO AVOID DAMAGE TO GAS COMPANY INSTALLATIONS.
 SEE PROVINCIAL REGULATION 140/92 FOR DETAILS

AECOM
 Certificate of Authorization
 AECOM Canada Ltd.
 No. 4671 Date: June 21/12

METRIC
 WHOLE NUMBERS INDICATE MILLIMETRES
 DECIMALIZED NUMBERS INDICATE METRES
 0 2.5 5 10 15 20 Meters
 BID OPPORTUNITY NO. 374-2012

AECOM REVIEW DRFT CHK FILE NAME: 191.pdf Saved By: JZ

LOCATION APPROVED UNDERGROUND STRUCTURES
 SUPR. U/G STRUCTURES DATE COMMITTEE
 NOTE:
 LOCATION OF UNDERGROUND STRUCTURES AS SHOWN ARE BASED ON THE BEST INFORMATION AVAILABLE. BUT NO GUARANTEE IS GIVEN THAT ALL EXISTING UTILITIES ARE SHOWN OR THAT THE GIVEN LOCATIONS ARE EXACT. CONFIRMATION OF EXISTENCE AND EXACT LOCATION OF ALL SERVICES MUST BE OBTAINED FROM THE INDIVIDUAL UTILITIES BEFORE PROCEEDING WITH CONSTRUCTION.

Can-Net GPS Reference Station WINN/810

NO.	REVISIONS	YY/MM/DD	BY
0	ISSUED FOR CONSTRUCTION	12/06/18	JZ

AECOM

DESIGNED BY	ALD	CHECKED BY	cm
DRAWN BY	JZ	APPROVED BY	Brw
HOR. SCALE	1:500	RELEASED FOR CONSTRUCTION	
VERT. SCALE	N/A	DATE	12/06/25

PROFESSIONAL'S SEAL
 PROVINCE OF MANITOBA
 K. FITCHETT
 REGISTERED ENGINEER
 CONSULTANT DRAWING NO. 60250984-01-C-191-R0X.mxd

THE CITY OF WINNIPEG WATER AND WASTE DEPARTMENT

2012 SEWER RENEWALS BY CIPP LINING CONTRACT 9 HIDDLESTON CR (N LEG) 1ST MH E OF CARTWRIGHT RD TO MH @CARTWRIGHT RD

SHEET 21 OF 84
CITY DRAWING NUMBER
10191 REV 0