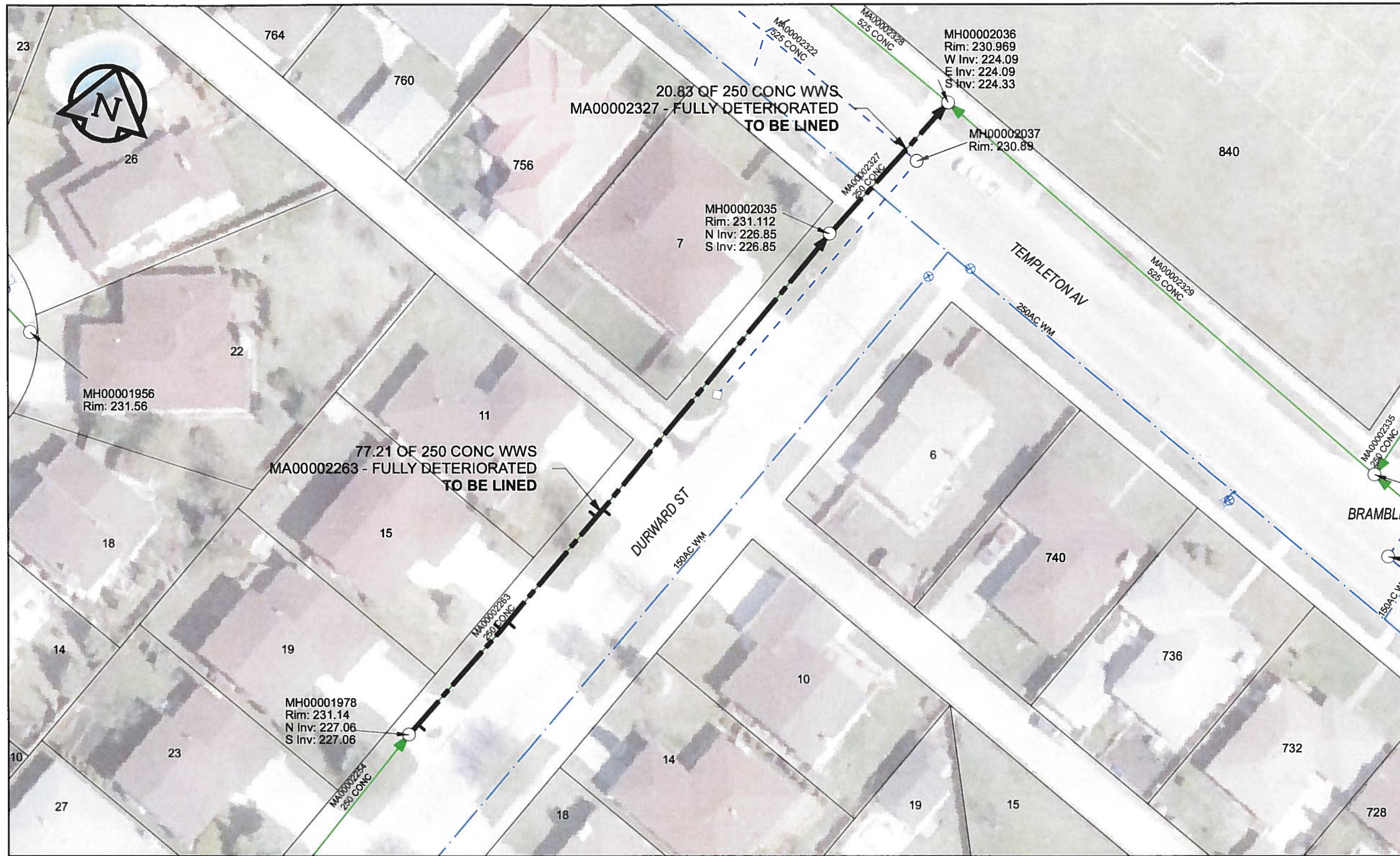


B SIZE 11" X 17" (279mm x 432mm)



**SEWER JUNCTION INFORMATION**

REF MH*	DIST FROM* REF MH	SIZE*	CLOCK AT*
MH00001978	1.60	150Ø	02
MH00001978	16.50	150Ø	11
MH00001978	17.70	150Ø	01
MH00001978	33.90	150Ø	10
MH00001978	35.10	150Ø	02

\*JUNCTION INFORMATION FROM VIDEO INSPECTION

**WARNING**  
 IF POWER EQUIPMENT OR EXPLOSIVES ARE TO BE USED FOR EXCAVATION ON THIS PROJECT, THE CONTRACTOR MUST:  
 1) NOTIFY THE GAS COMPANY OF THE PROPOSED LOCATION OF EXCAVATION.  
 2) TAKE PRECAUTION TO AVOID DAMAGE TO GAS COMPANY INSTALLATIONS.  
 SEE PROVINCIAL REGULATION 140/92 FOR DETAILS

**AECOM**  
 Certificate of Authorization  
 AECOM Canada Ltd.  
 No. 4671 Date: June 22/12

**METRIC**  
 WHOLE NUMBERS INDICATE MILLIMETRES  
 DECIMALIZED NUMBERS INDICATE METRES

BID OPPORTUNITY NO. 374-2012

AECOM REVIEW DRFT CHK AD

FILE NAME: 186.pdf Saved By: JZ

**LOCATION APPROVED UNDERGROUND STRUCTURES**

SUPR. U/G STRUCTURES	DATE

**NOTE:**  
 LOCATION OF UNDERGROUND STRUCTURES AS SHOWN ARE BASED ON THE BEST INFORMATION AVAILABLE. BUT NO GUARANTEE IS GIVEN THAT ALL EXISTING UTILITIES ARE SHOWN OR THAT THE GIVEN LOCATIONS ARE EXACT. CONFIRMATION OF EXISTENCE AND EXACT LOCATION OF ALL SERVICES MUST BE OBTAINED FROM THE INDIVIDUAL UTILITIES BEFORE PROCEEDING WITH CONSTRUCTION.

Can-Net GPS Reference Station WINN/810

NO.	REVISIONS	YY/MM/DD	BY
0	ISSUED FOR CONSTRUCTION	12/06/18	JZ

**AECOM**

DESIGNED BY	ALD	CHECKED BY	cm
DRAWN BY	JZ	APPROVED BY	STW
HOR. SCALE	1:500	RELEASED FOR CONSTRUCTION	XO 6-20-12
VERT. SCALE	N/A	DATE	12/06/18

PROFESSIONAL'S SEAL

CONSULTANT DRAWING NO. 60250984-01-C-186-R0X.mxd

**THE CITY OF WINNIPEG WATER AND WASTE DEPARTMENT**

2012 SEWER RENEWALS BY CIPP LINING CONTRACT 9 DURWARD ST

1ST MH N OF TULLY RD TO 1ST MH S OF TEMPLETON AV  
 1ST MH S OF TEMPLETON AV TO MH AT TEMPLTON AV

SHEET 16 OF 84  
 CITY DRAWING NUMBER 10186 REV 0