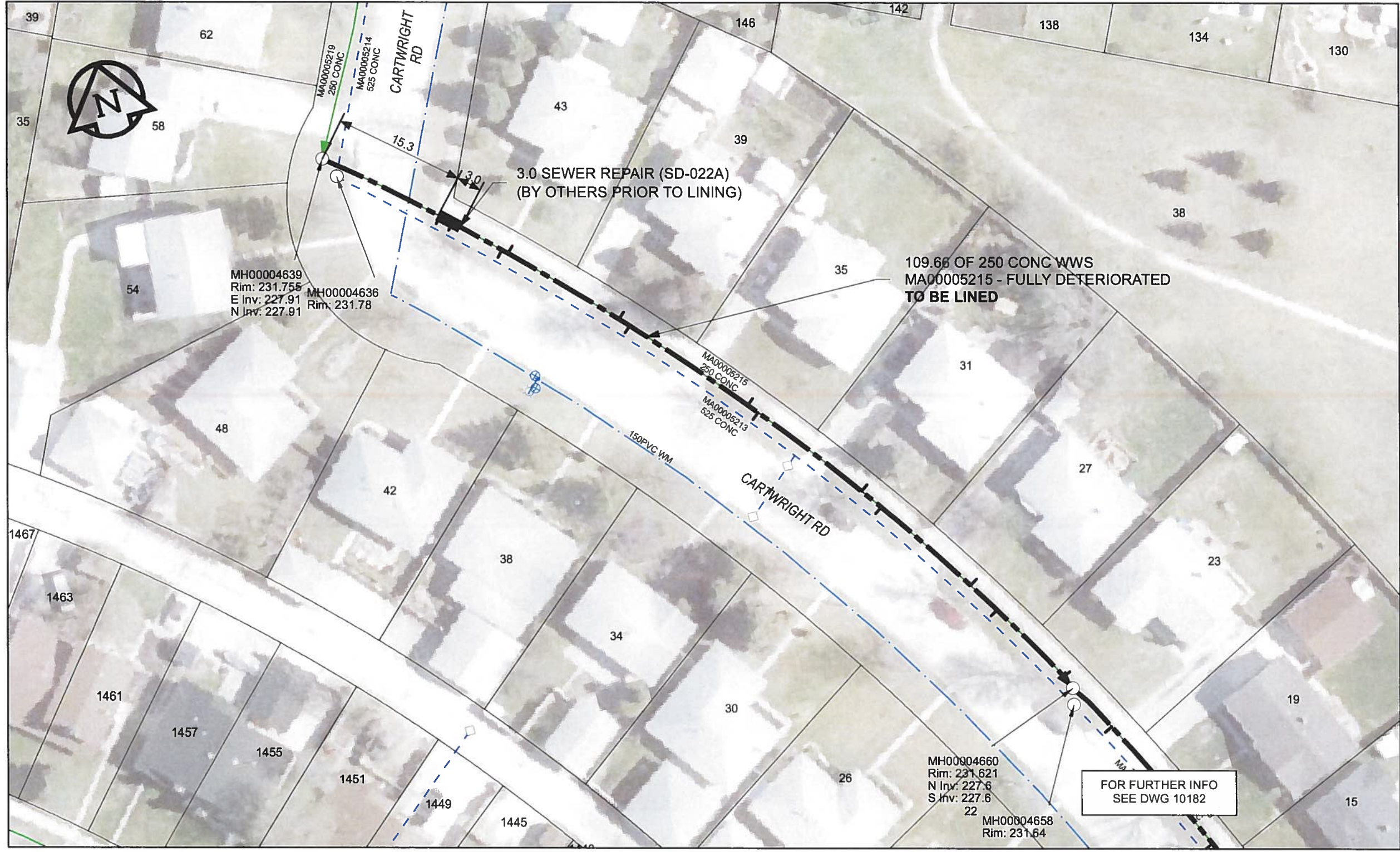


B SIZE 11" X 17" (279mm x 432mm)



SEWER JUNCTION INFORMATION

REF MH*	DIST FROM* REF MH	SIZE*	CLOCK AT*
MH00004639	15.5	150Ø	02
MH00004639	17.2	150Ø	02
MH00004639	23.9	150Ø	02
MH00004639	24.7	150Ø	10
MH00004639	40	150Ø	10
MH00004639	41.5	150Ø	02
MH00004639	58.4	150Ø	10
MH00004639	59.9	150Ø	02
MH00004639	75.3	150Ø	10
MH00004639	78.3	150Ø	02
MH00004639	92.4	150Ø	10
MH00004639	96.7	150Ø	02
MH00004639	107.9	150Ø	10

*JUNCTION INFORMATION FROM VIDEO INSPECTION

WARNING
IF POWER EQUIPMENT OR EXPLOSIVES ARE TO BE USED FOR EXCAVATION ON THIS PROJECT, THE CONTRACTOR MUST:
1) NOTIFY THE GAS COMPANY OF THE PROPOSED LOCATION OF EXCAVATION.
2) TAKE PRECAUTION TO AVOID DAMAGE TO GAS COMPANY INSTALLATIONS
SEE PROVINCIAL REGULATION 140/92 FOR DETAILS

APEGM
Certificate of Authorization
AECOM Canada Ltd.
No. 4671 Date: June 22/12

METRIC
WHOLE NUMBERS INDICATE MILLIMETRES
DECIMALIZED NUMBERS INDICATE METRES
0 2.5 5 10 15 20
Meters

BID OPPORTUNITY NO. 374-2012

LOCATION APPROVED UNDERGROUND STRUCTURES

SUPR. U/G STRUCTURES	DATE

NOTE:
LOCATION OF UNDERGROUND STRUCTURES AS SHOWN ARE BASED ON THE BEST INFORMATION AVAILABLE. BUT NO GUARANTEE IS GIVEN THAT ALL EXISTING UTILITIES ARE SHOWN OR THAT THE GIVEN LOCATIONS ARE EXACT. CONFIRMATION OF EXISTENCE AND EXACT LOCATION OF ALL SERVICES MUST BE OBTAINED FROM THE INDIVIDUAL UTILITIES BEFORE PROCEEDING WITH CONSTRUCTION.

Can-Net GPS Reference Station WINN/810

NO.	REVISIONS	YY/MM/DD	BY
0	ISSUED FOR CONSTRUCTION	12/06/18	JZ

AECOM

DESIGNED BY	ALD	CHECKED BY	cm
DRAWN BY	JZ	APPROVED BY	BW
HOR. SCALE	1:500	RELEASED FOR CONSTRUCTION	[Signature]
VERT. SCALE	N/A	DATE	6-26-12
DATE	12/06/18		

PROFESSIONAL'S SEAL
PROVINCE OF MANITOBA
K. FITCHETT
REGISTERED ENGINEER
CONSULTANT DRAWING NO. 60250984-01-C-183-R0X.mxd

THE CITY OF WINNIPEG
WATER AND WASTE DEPARTMENT

2012 SEWER RENEWALS BY CIPP LINING CONTRACT 9 CARTWRIGHT RD
2ND MH NW HIDDLESTON CR TO 1ST MH NW HIDDLESTON CR

SHEET 13 OF 84
CITY DRAWING NUMBER 10183 REV 0

AECOM REVIEW DRFT CHK
FILE NAME: 183.pdf Saved By: JZ