

CONSTRUCTION NOTES

1. CONTRACTOR SHALL TAKE PRECAUTIONARY STEPS TO AVOID DAMAGE FROM CONSTRUCTION ACTIVITIES TO EXISTING BOULEVARDS AND TREES WITHIN THE LIMITS OF CONSTRUCTION.
2. SEWER AND SEWER SERVICES TO BE INSTALLED BY TRENCHLESS METHODS UNLESS OTHERWISE SPECIFIED.
3. LOCATION OF EXISTING UTILITIES TO BE CONFIRMED IN THE FIELD BY THE CONTRACTOR.
4. BOULEVARD REPLACEMENT TO BE FINALIZED IN THE FIELD BY THE CONTRACT ADMINISTRATOR.
5. CONTRACTOR TO PLUG ANY ABANDONED PIPES THAT ARE BROKEN DURING CONSTRUCTION.
6. TRENCHES & EXCAVATIONS WITHIN 1 METRE OF A PAVED AREA INCLUDING SIDEWALKS SHALL BE CLASS 3 BACKFILL.
7. BACKFILL IN BOULEVARD TO BE CLASS 5.

FEEDERMAIN NOTES

1. THE CONSTRUCTION WORKS SHALL BE UNDERTAKEN IN ABSOLUTE COMPLIANCE WITH THE CONSTRUCTION LIMITATIONS AND RECOMMENDATIONS SET OUT IN THE PIPELINE ASSESSMENT FOR THE MURRAY AVENUE FEEDERMAIN (GATSID TO MCPHILLIPS) PREPARED BY AECOM CANADA LTD AND DATED APRIL 26, 2011 (SEE E18 OF THE BID OPP).
2. A CONSTRUCTION METHOD STATEMENT PREPARED BY THE CONTRACTOR SHALL BE PROVIDED TO THE WATER AND WASTE DEPARTMENT FOR REVIEW AND APPROVAL PRIOR TO THE COMMENCEMENT OF ANY CONSTRUCTION AT THE SITE.
3. SUBSEQUENT TO THE APPROVAL OF THE CONSTRUCTION METHOD STATEMENT BUT PRIOR TO THE COMMENCEMENT OF ANY CONSTRUCTION AT THE SITE, A PRE CONSTRUCTION MEETING SHALL BE HELD WITH THE WATER AND WASTE DEPARTMENT, PUBLIC WORKS DEPARTMENT, CONTRACTOR AND CONSULTANT IN ATTENDANCE.

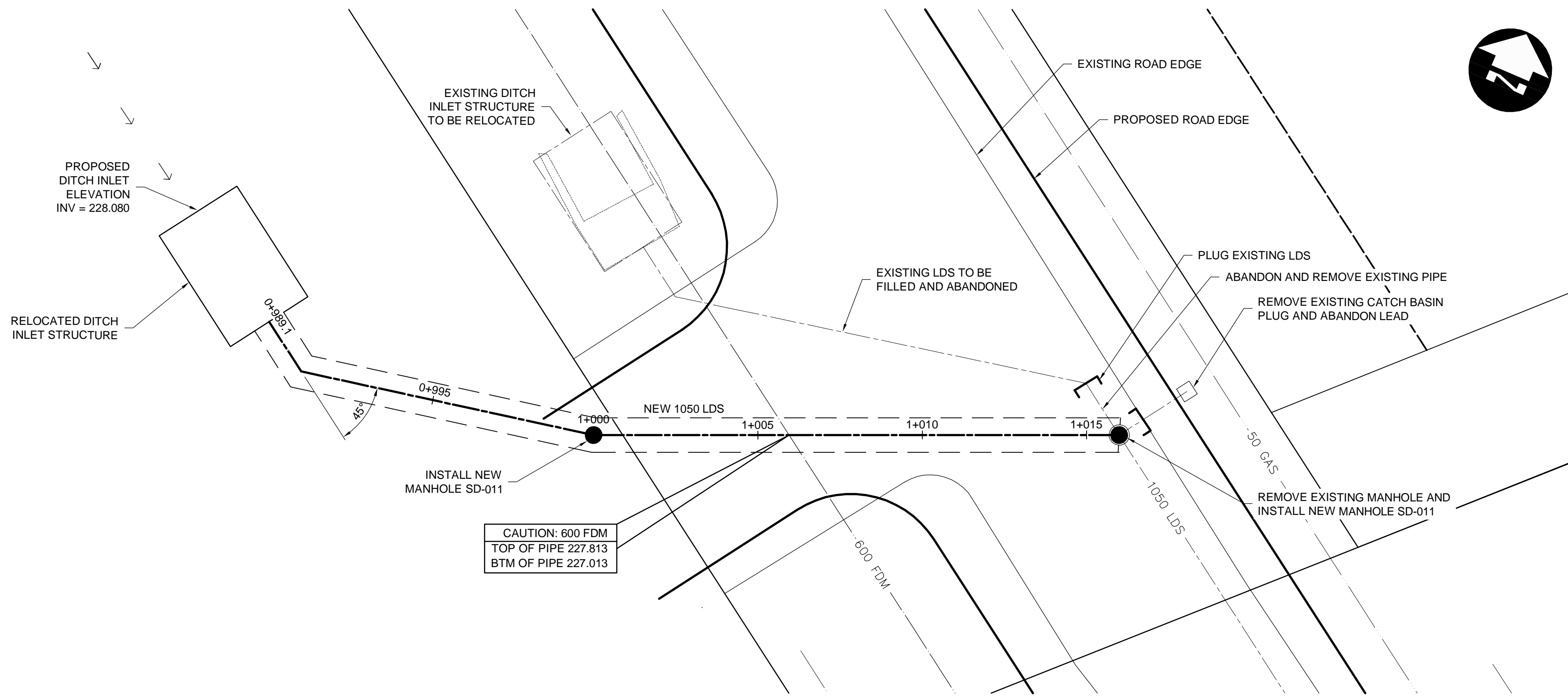
WARNING

IF POWER EQUIPMENT OR EXPLOSIVES ARE TO BE USED FOR EXCAVATION ON THIS PROJECT THE CONTRACTOR MUST:

1. NOTIFY THE GAS COMPANY OF THE PROPOSED LOCATION OF EXCAVATION.
2. TAKE PRECAUTION TO AVOID DAMAGE TO GAS COMPANY INSTALLATIONS SEE PROVINCIAL REGULATION 210/72 FOR DETAILS.
3. OBTAIN EXCAVATION PERMITS PRIOR TO CONSTRUCTION.

METRIC

WHOLE NUMBERS INDICATE MILLIMETRES
DECIMALIZED NUMBERS INDICATE METRES



NOTE: CHAINAGES SHOWN ALONG CL OF PIPE

G:\CAD\092696\Contract\2011_Murray\Current\10-DITCH_INLET_PIPE.dwg

150 WM	WATERMAIN	150 WM	HYDRO	HYDRO	HYDRO	150 WM	WATERMAIN	150 WM
⊕	HYDRANT	⊕	MTS	MTS	MTS	⊕	HYDRANT	⊕
⊗	VALVE	⊗	CONCRETE	CONCRETE	CONCRETE	⊗	VALVE	⊗
300 LDS	LAND DRAINAGE SEWER	300 LDS	ASPHALT	ASPHALT	ASPHALT	300 LDS	LAND DRAINAGE SEWER	300 LDS
250 WWS	WASTE WATER SEWER	250 WWS	PLANING	PLANING	PLANING	250 WWS	WASTE WATER SEWER	250 WWS
○	MANHOLE	●	SIDEWALK	SIDEWALK	SIDEWALK	○	MANHOLE	●
□	CATCH BASIN	■	PAVING STONES	PAVING STONES	PAVING STONES	□	CATCH BASIN	■
▽	CURB INLET	▽	PARTIAL DEPTH REPAIR	PARTIAL DEPTH REPAIR	PARTIAL DEPTH REPAIR	▽	CURB INLET	▽
+	JUNCTIONS	+	PROPERTY LINE	PROPERTY LINE	PROPERTY LINE	+	JUNCTIONS	+
—	CULVERT	—	DRAINAGE ARROW	DRAINAGE ARROW	DRAINAGE ARROW	—	CULVERT	—
100 GAS	GAS	100 GAS	CURB RAMP	CURB RAMP	CURB RAMP	100 GAS	GAS	100 GAS
EXISTING	LEGEND-PLAN	PROPOSED	EXISTING	LEGEND-PLAN	PROPOSED	EXISTING	LEGEND-PROFILE	PROPOSED

UNDERGROUND STRUCTURES

SUPPLY U/G STRUCTURES COMMITTEE DATE

NOTE:
LOCATION OF UNDERGROUND STRUCTURES AS SHOWN ARE BASED ON THE BEST INFORMATION AVAILABLE, BUT NO GUARANTEE IS GIVEN THAT ALL EXISTING UTILITIES ARE SHOWN OR THAT THE GIVEN LOCATIONS ARE EXACT. CONFIRMATION OF EXISTENCE AND EXACT LOCATION OF ALL SERVICES MUST BE OBTAINED FROM THE INDIVIDUAL UTILITIES BEFORE PROCEEDING WITH CONSTRUCTION.

BENCHMARK:		DESIGNED BY	TJH/BPN
		DRAWN BY	TJH
		CHECKED BY	ORIGINAL SIGNED BY TARAN J. PETERS
		APPROVED BY	ORIGINAL SIGNED BY DAVE KRAHN
		HOR. SCALE	1:100
		VERTICAL	1:50
		RELEASED FOR CONSTRUCTION	ORIGINAL SIGNED BY BRENT KELLETT
		DATE	07/23/12
		CONSULTANT PROJECT NUMBER	09-2696

DILLON CONSULTING

PROVINCE OF MANITOBA
REGISTERED PROFESSIONAL ENGINEER
T.J. PETERS
07/23/2012
Member 22309

THE CITY OF WINNIPEG
PUBLIC WORKS DEPARTMENT

2011 GRANULAR ROADWAY IMPROVEMENTS
MURRAY AVENUE
MCPHILLIPS STREET TO GATESIDE STREET

PLAN-PROFILE - DITCH INLET PIPE

CITY DRAWING NUMBER -
SHEET 10 OF 10
CONSULTANT DRAWING NUMBER -