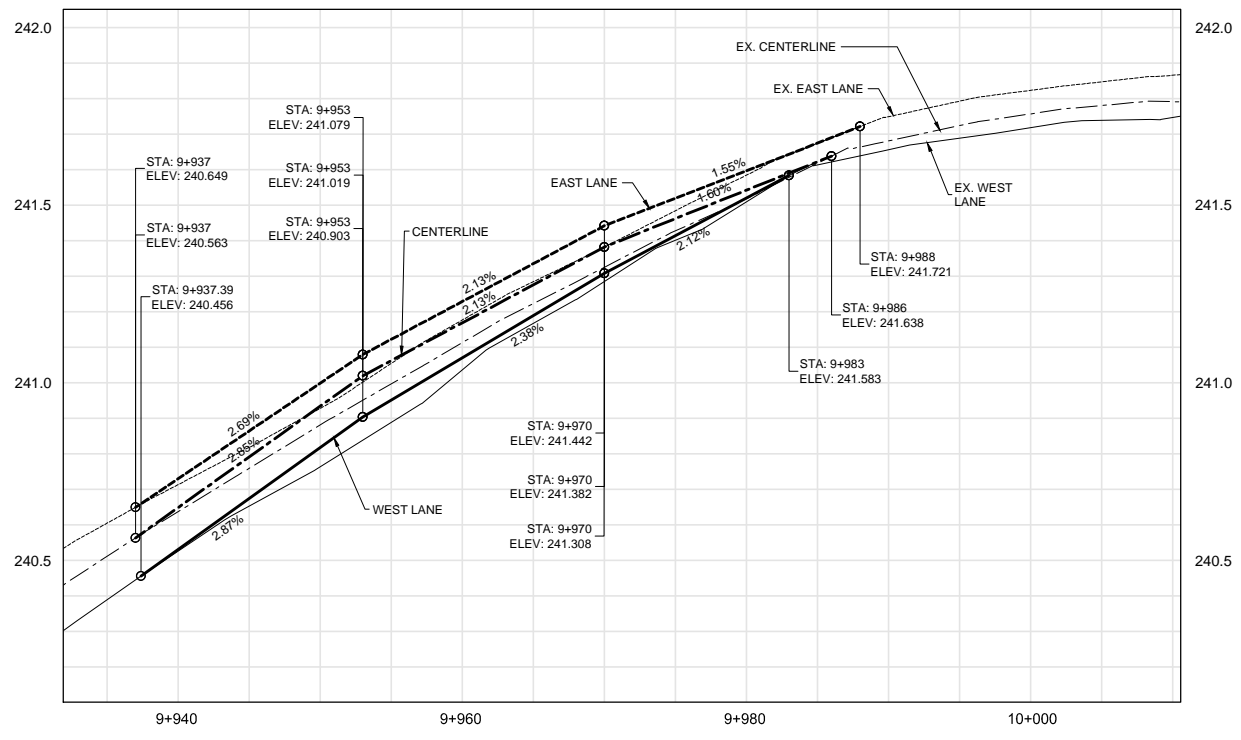


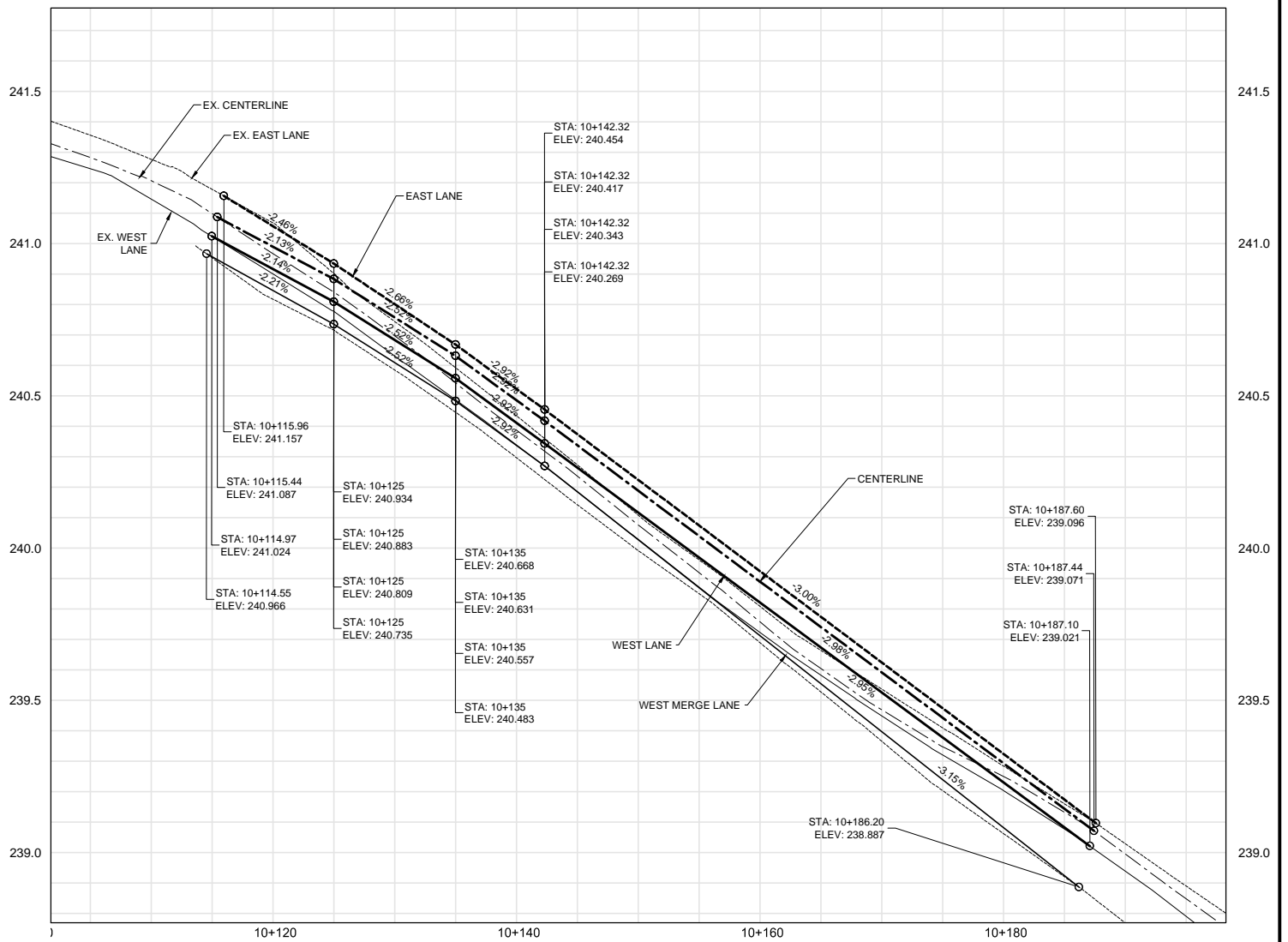
SOUTHBOUND

PLAN
SCALE 1:250

SOUTHBOUND



PROFILE
HORIZ: 1:250
VERT: 1:10



PROFILE
HORIZ: 1:250
VERT: 1:10

- NOTES:
- MILL 50mm DEPTH ASPHALT HEADERS.
 - MILL WHERE EXISTING ASPHALT IS HIGH TO THE GRADES SET BY THE CONTRACT ADMINISTRATOR, IN ORDER TO ACHIEVE MINIMUM OF 50mm OF NEW ASPHALT.
 - CONSTRUCT TEMPORARY ASPHALT RAMPS WHERE NECESSARY TO ENSURE SMOOTH TRANSITIONS FOR TRAFFIC.
 - DO NOT MILL OR CAUSE DAMAGE TO THE STRUCTURAL CONCRETE APPROACH SLABS OR CONCRETE ROADWAY.
 - CONDUCT CONCRETE JOINT REPAIRS IF NECESSARY AS MARKED OUT BY THE CONTRACT ADMINISTRATOR, AFTER MILLING.
 - PLACE NEW ASPHALT TO THE GRADES SET BY THE CONTRACT ADMINISTRATOR.

- TRAFFIC CONTROL:
- CONTRACTOR SHALL NOTIFY THE CONTRACT ADMINISTRATOR AND THE CITY OF WINNIPEG CUSTOMER SERVICE AT 986-5640, ONE DAY IN ADVANCE OF ANY TRAFFIC CLOSURES.
 - MAINTAIN ONE LANE OF TRAFFIC IN EACH DIRECTION AT ALL TIMES.
 - CONTRACTOR SHALL MAINTAIN PERMANENT, SAFE ACCESS TO THE NORTHBOUND OFF RAMP (TO CONCORDIA AVE), AND PERMANENT, SAFE ACCESS FROM THE SOUTHBOUND MERGE LANE (FROM CONCORDIA AVE) THROUGHOUT THE PROJECT.

APEGM
Certificate of Authorization
Dillon Consulting Limited (MB)
No. 1789 Date: May 8, 2012

**DRAWING REDUCED
NOT TO SCALE**

B.M.1	BM CAP N/B BRIDGE, S.E. BARRIER AT EXP. JT.	DESIGNED BY	MRD
ELEV.	242.564 (LOCAL SURVEY)	DRAWN BY	MRD
B.M.2	S.E. BOLT ON PED. S. OF R/R W. OF S/B BRIDGE	CHECKED BY	TJP
ELEV.	233.125 (LOCAL SURVEY)	APPROVED BY	-
1	ISSUED FOR TENDER	05/08/12	JGW
0	ISSUED FOR REVIEW	05/01/12	JGW
NO.	REVISIONS	DATE	BY

HOR. SCALE	1: 250
VERTICAL	1:10
DATE	MAY 8, 2012

DILLON CONSULTING

RELEASED FOR CONSTRUCTION

ENGINEER'S SEAL
PROVINCE OF MANITOBA
M.R. DOUCET
MAY 8, 2012
Member 22306
REGISTERED PROFESSIONAL ENGINEER

CONSULTANT PROJECT NO.
12-5995

**THE CITY OF WINNIPEG
PUBLIC WORKS DEPARTMENT**

2012 BRIDGE MAINTENANCE PROGRAM
ROUTE 20 KEEWATIN OVERPASS

PLAN & PROFILE
SOUTHBOUND LANES

CITY DRAWING NUMBER
B123-12-15-R1
SHEET 15 OF 15

BID OPP. NO.
363-2012