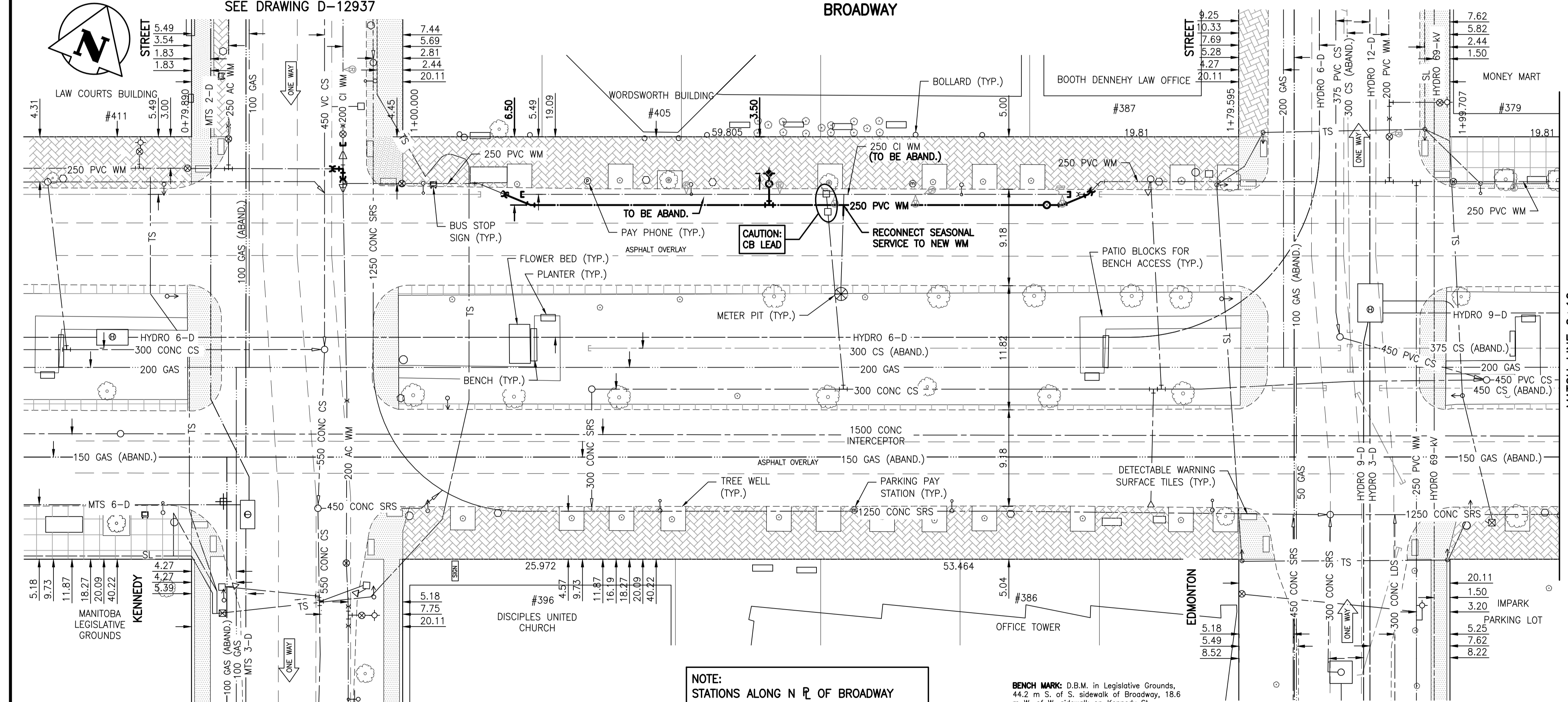


MATCH LINE 2+10

FOR CONTINUATION
SEE DRAWING D-12937

BROADWAY



WATER SERVICE INFORMATION

ADDRESS	SIZE & TYPE STREET	SIZE & TYPE PROPERTY	STOP COCK LOCATION FROM STOP COCK	CORP LOCATION FROM STOP COCK	REMARKS
#373 BROADWAY COMMERCIAL	150 UNKNOWN	150 UNKNOWN	NO INFORMATION	NO INFORMATION	SERVICED OFF BROADWAY
#379 BROADWAY COMMERCIAL	50 COPPER	50 COPPER	NO INFORMATION	OPP. S/C	SERVICED OFF BROADWAY
#386 BROADWAY COMMERCIAL	50 COPPER	50 COPPER	3.4 SML BLDG. 3.4 SSL BROADWAY	NO INFORMATION	OPP. S/C SERVICED OFF EDMONTON
#386 BROADWAY SPRINKLER	150 AC	150 AC	NO INFORMATION	NO INFORMATION	SERVICED OFF EDMONTON
#387 BROADWAY COMMERCIAL	25 UNKNOWN	25 UNKNOWN	15.8 NSL BLDG 18.0 NNL BROADWAY	0.6 N S/C	SERVICED OFF EDMONTON
#396 BROADWAY COMMERCIAL	25 COPPER	25 COPPER	16.5 NSL BLDG 24.1 SSL BROADWAY	OPP. S/C	SERVICED OFF KENNEDY
#405 BROADWAY COMMERCIAL	150 AC	150 AC	NO INFORMATION	NO INFORMATION	SERVICED OFF KENNEDY
#405 BROADWAY SPRINKLER	150 AC	150 AC	50.1 NNL OF BROADWAY	NO INFORMATION	SERVICED OFF KENNEDY
SEASONAL SERVICE MEDIAN IRRIGATION	25 COPPER	N/A	42.4 EEL KENNEDY (METER PIT IN MEDIAN)	0.3 E OF METER PIT	SERVICED OFF BROADWAY

* RENEW LEAD & CAST IRON SERVICES TO P/L WHERE MAIN IS BEING RENEWED

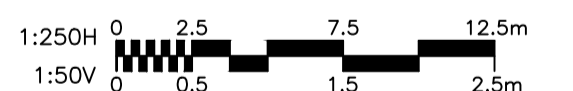
CONSTRUCTION NOTES:

- EXPOSE ALL WATERMAIN CONNECTIONS AND CONFIRM INVERTS PRIOR TO CONSTRUCTION
- INSTALL WATERMAINS AND SERVICES BY TRENCHLESS METHODS
- THE LATEST VERSION OF THE CITY OF WINNIPEG STANDARD CONSTRUCTION SPECIFICATION SHALL APPLY
- ALL BUILDINGS EFFECTED BY WATER SHUT DOWNS SHALL BE NOTIFIED A MINIMUM OF 24 HOURS PRIOR TO SERVICE INTERRUPTION
- EXCAVATIONS UNDER AND WITHIN 1.0m OF PAVEMENT, INCLUDING SIDEWALKS, SHALL BE BACKFILLED WITH CLASS 3 BACKFILL
- ALL EXISTING LEAD WATER SERVICES SHALL BE RENEWED TO PROPERTY LINE
- CONTRACTOR TO CONFIRM ACTUAL LOCATION OF WATER SERVICES. SERVICES SHOWN ON PLANS ARE APPROXIMATE
- ALL VALVES TO BE INSTALLED COUNTER-CLOCKWISE TO CLOSE
- LOCATE ALL SERVICES FOR MEDIAN IRRIGATION SYSTEM ON BROADWAY AND RECONNECT TO NEW WATERMAIN

**PRELIMINARY
NOT FOR CONSTRUCTION**

WARNING

IF POWER EQUIPMENT OR EXPLOSIVES ARE TO BE USED FOR EXCAVATION ON THIS PROJECT THE CONTRACTOR MUST:
1) NOTIFY THE GAS COMPANY OF THE PROPOSED LOCATION OF EXCAVATION.
2) TAKE PRECAUTION TO AVOID DAMAGE TO GAS COMPANY INSTALLATIONS.
SEE PROVINCIAL REGULATION 140/92 FOR DETAILS



APEGM
Certificate of Authorization
Stantec Consulting Ltd.
No. 1301

METRIC
WHOLE NUMBERS INDICATE MILLIMETRES
DECIMALIZED NUMBERS INDICATE METRES

BID OPPORTUNITY 327-2012

150 WM	WATERMAIN	150 WM	CONCRETE	150 WM	WATERMAIN	150 WM
+	HYDRANT	+	ASPHALT	+	HYDRANT VALVE	+
+	VALVE	+	SMALL PAVING STONE	+	LAND DRAINAGE SEWER	+
+	LAND DRAINAGE SEWER	+	LARGE PAVING STONE	+	WASTE WATER SEWER	+
+	WASTE WATER SEWER	+	CONCRETE SIDEWALK	+	CONCRETE SIDEWALK	+
+	MANHOLE	+	PROPERTY LINE	+	NORTH OR WEST GUTTER	+
+	CATCH BASIN	+	SURVEY BAR	+	SOUTH OR EAST GUTTER	+
+	CURB INLET	+	DITCH	+	NORTH OR WEST R	+
+	GAS	+	CURB STOP	+	SOUTH OR EAST R	+
+	HYDRO	+	TREE	+	NORTH OR WEST DITCH	+
+	M.T.S.	+	FENCE	+	SOUTH OR EAST DITCH	+
+	EXISTING	+	PROPOSED	+	EXISTING	+

LOCATION APPROVED UNDERGROUND STRUCTURES

SUPV. U/G STRUCTURES COMMITTEE DATE

NOTE:
LOCATION OF UNDERGROUND STRUCTURES AS SHOWN ARE BASED ON THE BEST INFORMATION AVAILABLE BUT NO GUARANTEE IS GIVEN THAT ALL EXISTING UTILITIES ARE SHOWN OR THAT THE GIVEN LOCATIONS ARE EXACT. CONFIRMATION OF EXISTENCE AND EXACT LOCATION OF ALL SERVICES MUST BE OBTAINED FROM THE INDIVIDUAL UTILITIES BEFORE PROCEEDING WITH CONSTRUCTION.

B.M. 35-014
ELEV. 232.527m

1. ADDED 250 GV AT STA. 1+61.32 12.05.17 J.K.H.

NO. REVISIONS DATE BY

Stantec Consulting Ltd.
905 Waverley Street, Winnipeg, Manitoba
Tel 204-489-5900 Fax 204-453-9012

DESIGNED BY: J.K.H. CHECKED BY: W.W.B.
DRAWN BY: J.K.H. APPROVED BY: H.A.K.

HOR. SCALE: 1:250
VERTICAL: 1:50

RELEASED FOR CONSTRUCTION: DATE

ENGINEER'S SEAL

CONSULTANT DRAWING NO.
C-201

**THE CITY OF WINNIPEG
WATER AND WASTE DEPARTMENT
ENGINEERING DIVISION**

**2012 WATERMAIN RENEWALS
CONTRACT 8
BROADWAY**
KENNEDY STREET TO
10.0m E OF EDMONTON STREET

SHEET 1 OF 8
CAD FILE DRAWING NUMBER
13630c-201-776.dwg
CITY DRAWING NUMBER
D-12930