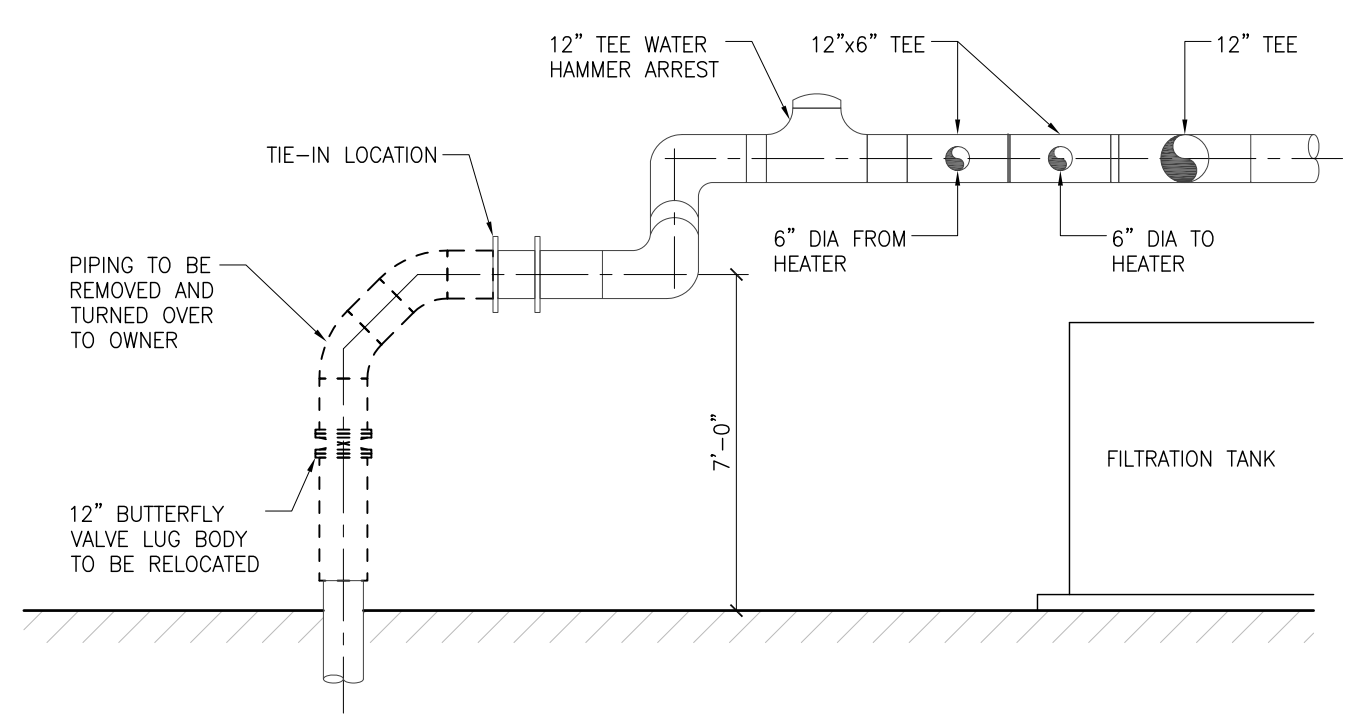
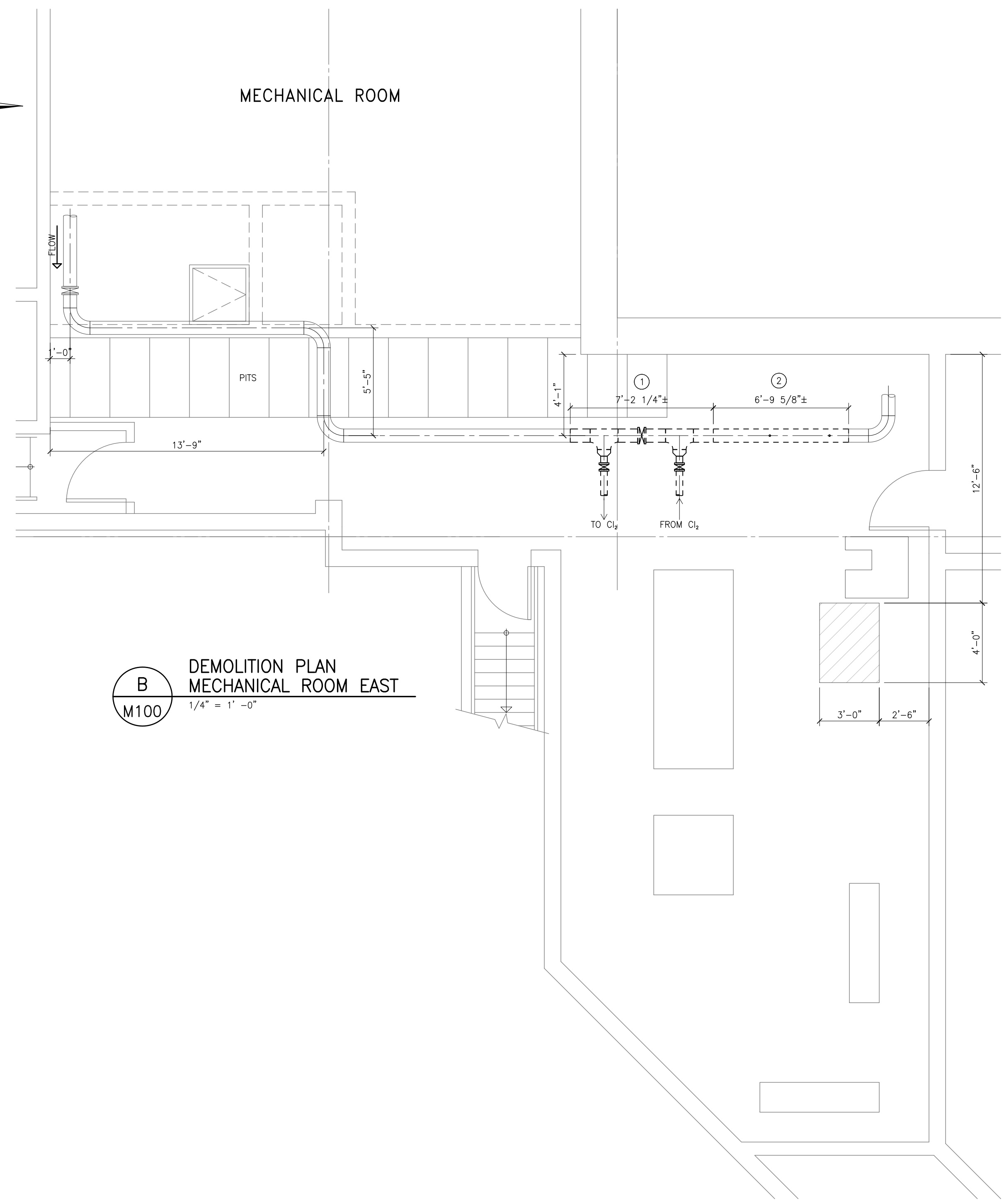
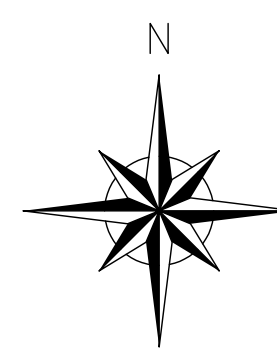


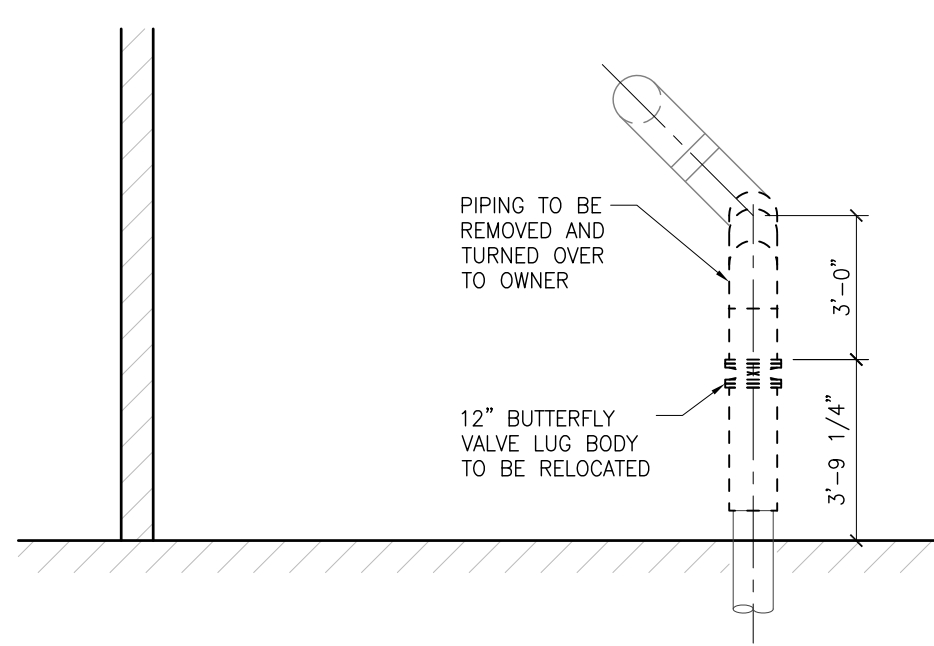
A
M100
DEMOLITION PLAN
MECHANICAL ROOM WEST
1/4" = 1' - 0"



1
M101
DEMOLITION ELEVATION
1/4" = 1' - 0"

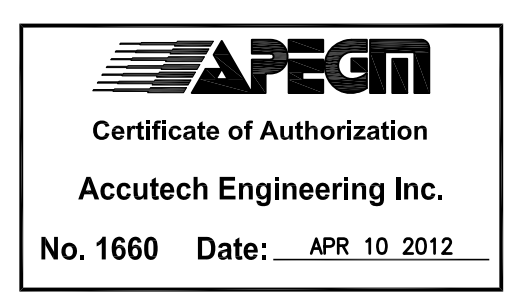


B
M100
DEMOLITION PLAN
MECHANICAL ROOM EAST
1/4" = 1' - 0"



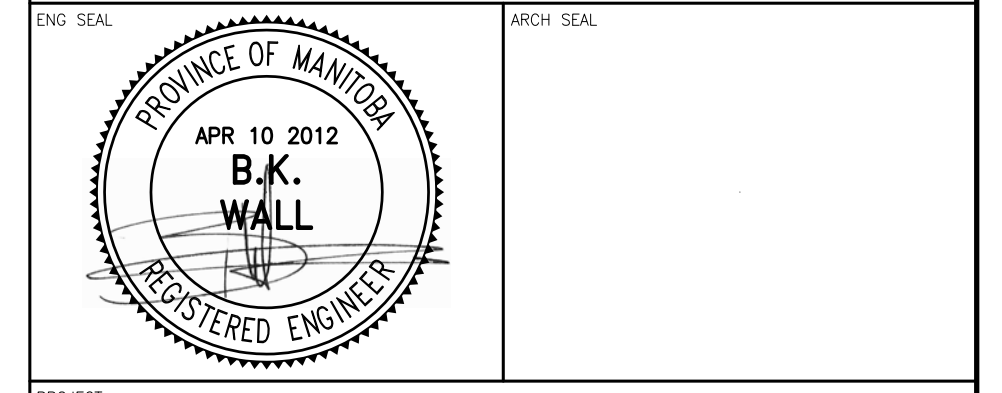
2
M101
DEMOLITION ELEVATION
1/4" = 1' - 0"

- DEMOLITION KEYNOTES:**
- ① REMOVE AND RELOCATE EXISTING PIPE AND FITTINGS. REFER TO A/M103.
 - ② DEMOLISH EXISTING 8" PVC PIPING AT THIS SECTION. REFER TO A/M103 FOR NEW PIPING.



7				
6				
5				
4				
3				
2				
1				
0	ISSUED FOR TENDER	VCV	BKW	APR 10 2012
REV	DESCRIPTION	DWN	APP	REV DATE

Accutech Engineering Inc.
Tomorrow's Technology Today
605-287 Broadway, Winnipeg, Manitoba Canada R3C 0R9
Phone 204.944.1555 Fax 204.944.1444
www.accutecheng.ca



CITY OF WINNIPEG
PAN AM POOL UV PIPING

DEMOLITION PLANS AND
DEMOLITION ELEVATIONS

DESIGNED BY BKW	CHECKED BY KRD	DATE APR 10 2012	SHEET NO M100
SCALE AS NOTED	REVISION NO 0		