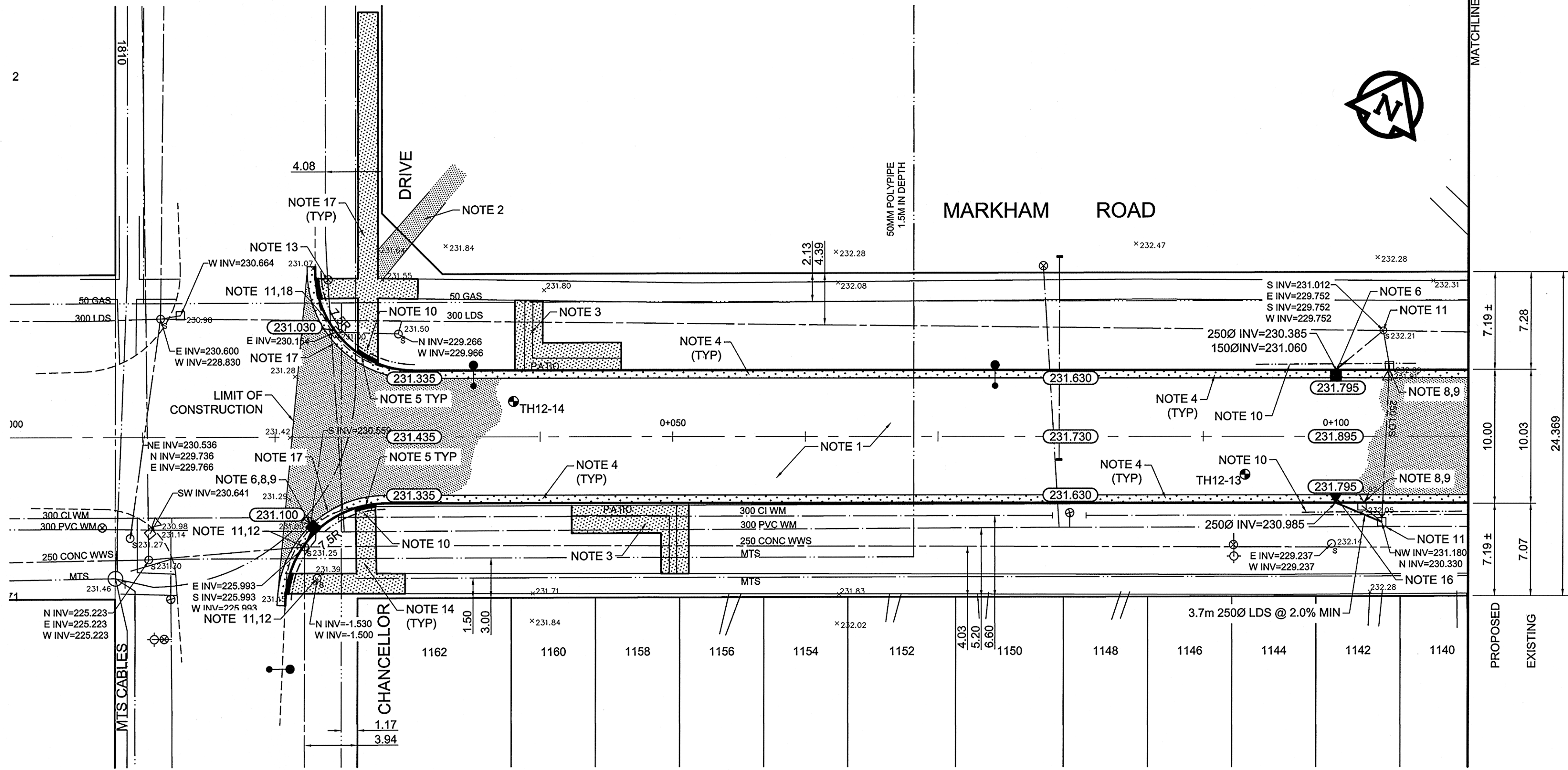


REFERENCE NOTES

- A. PAVEMENT DIMENSIONS ARE TO BACK OF CURB
- B. BASELINE IS CENTRE LINE RIGHT-OF-WAY
- C. PROPERTY LINES OBTAINED FROM CITY OF WINNIPEG L.B.I.S., AND NO SCALE FACTOR WAS APPLIED
- D. REFER TO AECOM FIELD BOOK NO. 4752

CONSTRUCTION NOTES

1. REMOVE EXISTING CONCRETE AND PLACE NEW TYPE 3 ASPHALTIC PAVEMENT (50mm) AND PLACE NEW TYPE 1A ASPHALTIC PAVEMENT (50mm)
2. REMOVE EXISTING ASPHALT SIDEWALK PAVEMENT AND PLACE 50mm ASPHALTIC PAVEMENT (TYPE 1A)
3. REMOVE EXISTING PATIO BLOCKS BUS STOP AND CONSTRUCT NEW 100mm CONCRETE SIDEWALK
4. CONSTRUCT NEW BARRIER CURB AND GUTTER (180mm HT.)
5. CONSTRUCT NEW CURB RAMP AND GUTTER (10mm HT.)
6. INSTALL NEW CURB AND GUTTER INLET c/w CATCH BASIN (SD-024) AND CONNECT NEW 250mm LEAD TO EXISTING LDS
7. REMOVE EXISTING COVER AND PLACE NEW SOLID COVER (AP-005)
8. REMOVE EXISTING CURB INLET
9. REMOVE EXISTING CATCHBASIN
10. INSTALL 150mm SUBDRAIN
11. ADJUST EXISTING MANHOLE/CATCH BASIN TO GRADE
12. INSTALL NEW CAST IRON RISER RING
13. ADJUST EXISTING WATER VALVE TO GRADE
14. RENEW EXISTING CONCRETE SIDEWALK
15. ADJUST EXISTING CURB STOP
16. INSTALL NEW CURB AND GUTTER INLET c/w CATCHPIT (SD-023) AND CONNECT NEW 250mm LEAD TO EXISTING CATCHBASIN
17. CONSTRUCT NEW MODIFIED BARRIER CURB AND GUTTER (180mm HT.)
18. REMOVE EXISTING AND INSTALL NEW FRAME AND COVER (AP008/AP009)



METRIC
WHOLE NUMBERS INDICATE MILLIMETRES
DECIMALIZED NUMBERS INDICATE METRES

150 mm W.M.	WATERMAIN	150 mm W.M.	HYDRO	— X —	C PROFILE	LOCATION APPROVED UNDERGROUND STRUCTURES
300 mm L.D.S.	LAND DRAINAGE SEWER	300 mm L.D.S.	M.T.S.	— □ —	NORTH/WEST GUTTER	
250 mm W.W.S.	WASTEWATER SEWER	250 mm W.W.S.	CONCRETE	— ▨ —	SOUTH/EAST GUTTER	
	MANHOLE		ASPHALT	— ○ —	NW PROPERTY LINE	
	CATCH BASIN		PROPERTY LINE	— — —	S/E PROPERTY LINE	
	CURB INLET		SURVEY BAR	— — —		
	JUNCTIONS		ELEVATION (35.750)	— — —		
	CULVERT		TREE	— — —		
	GAS		SIDEWALK RAMP	— — —		
EXISTING	LEGEND - PLAN	PROPOSED	CONCRETE SIDEWALK	— — —		
			FENCE	— — —		
			LEGEND - PLAN	— — —		
			PROPOSED	— — —		
			EXISTING	— — —		
			LEGEND - PROFILE	— — —		
			PROPOSED	— — —		
			EXISTING	— — —		

NOTE:
LOCATION OF UNDERGROUND STRUCTURES AS SHOWN ARE BASED ON THE BEST INFORMATION AVAILABLE. BUT NO GUARANTEE IS GIVEN THAT ALL EXISTING UTILITIES ARE SHOWN OR THAT THE GIVEN LOCATIONS ARE EXACT. CONFIRMATION OF EXISTENCE AND EXACT LOCATION OF ALL SERVICES MUST BE OBTAINED FROM THE INDIVIDUAL UTILITIES BEFORE PROCEEDING WITH CONSTRUCTION.

B.M. 76-022	N.E. Cor. Markham Rd. & Bison Dr., Tbl. in W. Conc. Foundation		
ELEV. 233.014	Waverly Place, No. 1525 Markham Rd., 3.3 m N. & 0.1 m below of S.W. Cor. of Bldg.		
NO.	REVISIONS	DATE	BY
0	ISSUED FOR TENDER	05/08/2012	BC
A	ISSUED FOR REVIEW	04/24/2012	BC

AECOM

DESIGNED BY: SS
CHECKED BY: BC/KWR

DRAWN BY: SS
APPROVED BY:

HOR. SCALE: 1:250
VERTICAL: 1:10

RELEASED FOR CONSTRUCTION BY: [Signature]

DATE: 2012/04/24

CONSULTANT DRAWING NO. CT-19

THE CITY OF WINNIPEG
PUBLIC WORKS DEPARTMENT
ENGINEERING DIVISION

2012 LOCAL STREET RENEWAL PROGRAM

MARKHAM ROAD - CHANCELLOR DRIVE E. LEG TO GULL LAKE ROAD
PAVEMENT RECONSTRUCTION
CHANCELLOR DRIVE TO STATION 0+110

CITY DRAWING NUMBER
SHEET 19 OF 27