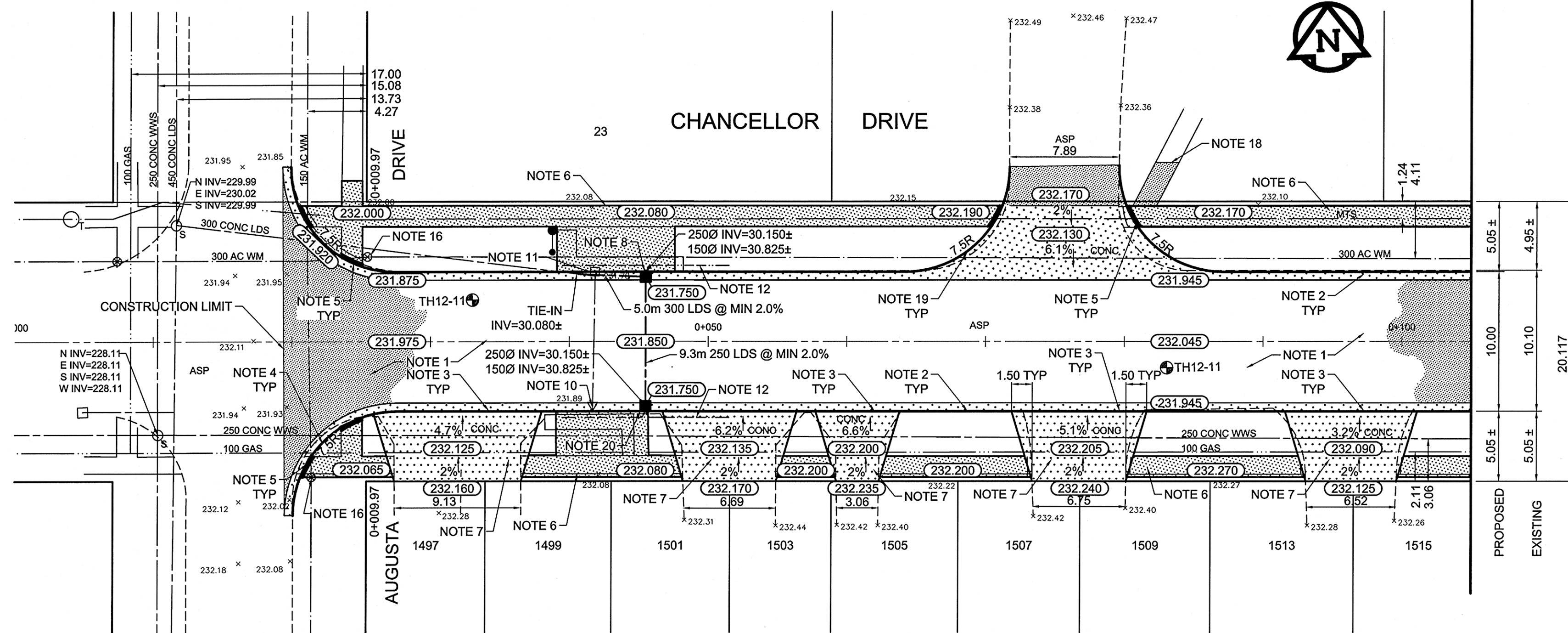


**REFERENCE NOTES**

- A. PAVEMENT DIMENSIONS ARE TO BACK OF CURB
- B. BASELINE IS CENTRE LINE RIGHT-OF-WAY
- C. PROPERTY LINES OBTAINED FROM CITY OF WINNIPEG L.B.I.S., AND NO SCALE FACTOR WAS APPLIED
- D. REFER TO AECOM FIELD BOOK NO. 4752

**CONSTRUCTION NOTES**

1. REMOVE EXISTING CONCRETE PAVEMENT AND CONSTRUCT NEW TYPE 3 (50mm) AND NEW TYPE 1A ASPHALTIC PAVEMENT TYPE 1A (50mm)
2. CONSTRUCT NEW BARRIER CURB AND GUTTER (180mm HT.)
3. CONSTRUCT NEW LIP CURB AND GUTTER (40mm HT. INTEGRAL)
4. CONSTRUCT NEW MODIFIED BARRIER CURB AND GUTTER (180mm HT.)
5. CONSTRUCT NEW CURB RAMP AND GUTTER (10mm HT. INTEGRAL)
6. RENEW EXISTING 100mm CONCRETE SIDEWALK
7. REMOVE EXISTING CONCRETE PAVEMENT AND CONSTRUCT NEW 150mm REINFORCED CONCRETE PAVEMENT
8. INSTALL NEW CURB AND GUTTER INLET c/w CATCH BASIN (SD-024) AND CONNECT TO EXISTING 300 LDS
9. REMOVE EXISTING COVER AND PLACE NEW SOLID COVER (AP-005)
10. REMOVE EXISTING CATCH PIT AND ABANDON EXISTING LEAD
11. REMOVE EXISTING CATCH BASIN
12. INSTALL 150mm SUBDRAIN
13. ADJUST EXISTING MANHOLE/CATCH BASIN TO GRADE
14. INSTALL NEW CAST IRON RISER RING
15. REMOVE EXISTING FRAME AND COVER AND PLACE NEW FRAME AND SOLID COVER
16. ADJUST EXISTING WATER VALVE TO GRADE
17. ADJUST EXISTING CURB STOP
18. REMOVE EXISTING ASPHALT SIDEWALK AND PLACE 50mm NEW ASPHALT SIDEWALK
19. CONSTRUCT NEW MODIFIED BARRIER CURB (180mm HT. INTEGRAL)
20. INSTALL NEW CURB AND GUTTER INLET c/w CATCH BASIN (SD-024) AND CONNECT TO NEW CATCH BASIN



**METRIC**  
WHOLE NUMBERS INDICATE MILLIMETRES  
DECIMALIZED NUMBERS INDICATE METRES

150mm W.W.M.	WATERMAIN	150mm W.W.M.	HYDRO	X	C PROFILE
Hydrant	HYDRANT	M.T.S.	M.T.S.	North/West Gutter	NORTH/WEST GUTTER
Valve	VALVE	CONCRETE	CONCRETE	South/East Gutter	SOUTH/EAST GUTTER
300mm L.D.S.	LAND DRAINAGE SEWER	ASPHALT	ASPHALT	N/W PROPERTY LINE	N/W PROPERTY LINE
250mm W.W.S.	WASTEWATER SEWER	PROPERTY LINE	PROPERTY LINE	S/E PROPERTY LINE	S/E PROPERTY LINE
Manhole	MANHOLE	SURVEY BAR	SURVEY BAR		
Catch Basin	CATCH BASIN	ELEVATION	ELEVATION (35.750)		
Curb Inlet	CURB INLET	TREE	TREE		
Junctions	JUNCTIONS	SIDEWALK RAMP	SIDEWALK RAMP		
Culvert	CULVERT	CONCRETE SIDEWALK	CONCRETE SIDEWALK		
Gas	GAS	FENCE	FENCE		
EXISTING	LEGEND - PLAN	PROPOSED	EXISTING	LEGEND - PLAN	PROPOSED

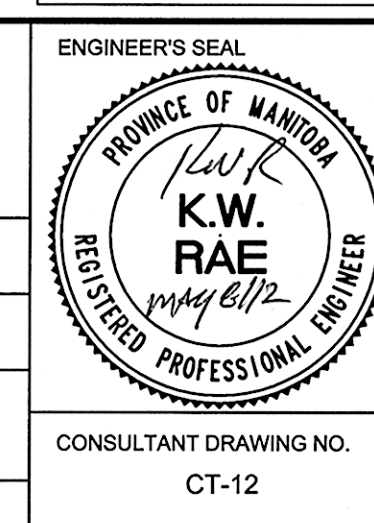
**LOCATION APPROVED UNDERGROUND STRUCTURES**

SUPV. U/G STRUCTURES COMMITTEE DATE

**NOTE:**  
LOCATION OF UNDERGROUND STRUCTURES AS SHOWN ARE BASED ON THE BEST INFORMATION AVAILABLE. BUT NO GUARANTEE IS GIVEN THAT ALL EXISTING UTILITIES ARE SHOWN OR THAT THE GIVEN LOCATIONS ARE EXACT. CONFIRMATION OF EXISTENCE AND EXACT LOCATION OF ALL SERVICES MUST BE OBTAINED FROM THE INDIVIDUAL UTILITIES BEFORE PROCEEDING WITH CONSTRUCTION.

B.M. 76-022	ELEV. 233.014	H.E. Cor. Markham Rd. & Bison Dr. Tbl. in W. Conc. Foundation
Winnipeg Plaza, No. 1322 Markham Rd. 3.3 m N. & 0.1 m below of S.W. Cor. of Bldg.		

DESIGNED BY	SS	CHECKED BY	BC/KWR
DRAWN BY	SS	APPROVED BY	
HOR. SCALE:	1:250	RELEASED FOR CONSTRUCTION BY:	
VERTICAL:	1:10	DATE	2012/04/17



**THE CITY OF WINNIPEG**  
PUBLIC WORKS DEPARTMENT  
ENGINEERING DIVISION

2012 LOCAL STREET RENEWAL PROGRAM

CHANCELLOR DR. S. LEG - AUGUSTA DR. TO MARKHAM RD.  
PAVEMENT RECONSTRUCTION  
AUGUSTA DRIVE TO STATION 0+105

CITY DRAWING NUMBER  
SHEET 12 OF 27