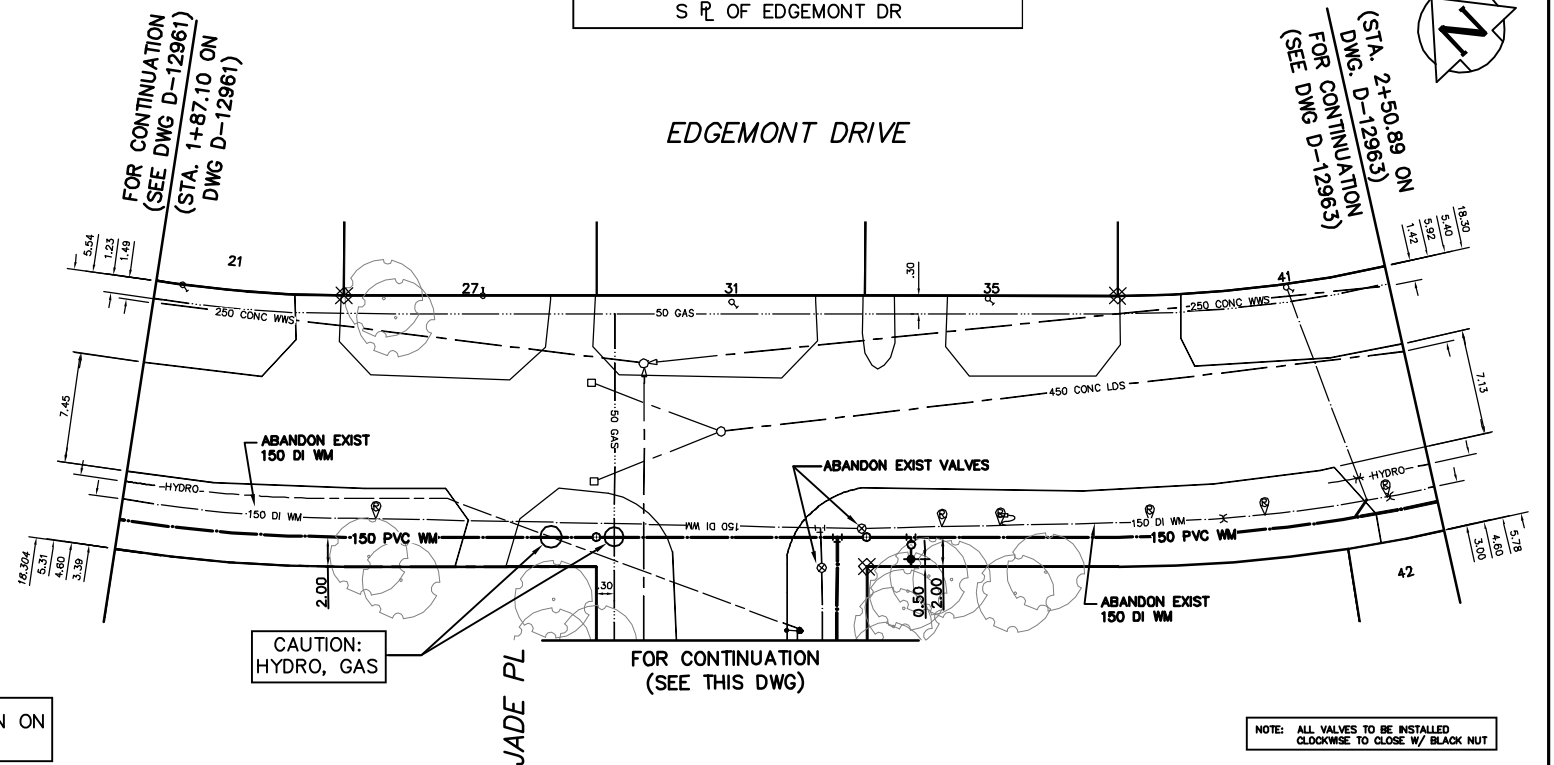
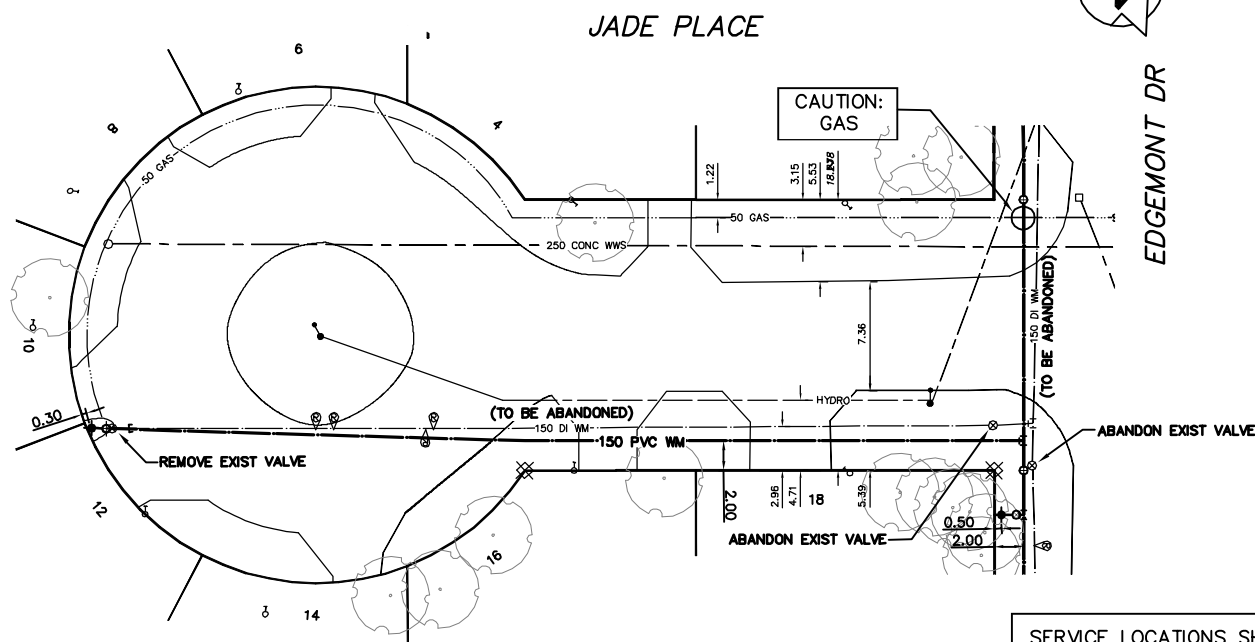


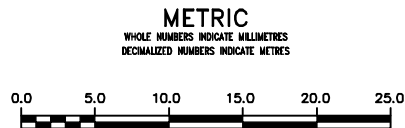
NOTE: CHAINAGES SHOWN ARE ALONG S.R. OF JADE PL

NOTE: CHAINAGES SHOWN ARE ALONG S.R. OF EDMONT DR



SERVICE LOCATIONS SHOWN ON D-12961

NOTE: ALL VALVES TO BE INSTALLED CLOCKWISE TO CLOSE W/ BLACK NUT



WARNING
IF POWER EQUIPMENT OR EXPLOSIVES ARE TO BE USED FOR EXCAVATION ON THIS PROJECT THE CONTRACTOR MUST:
1) NOTIFY THE GAS COMPANY OF THE PROPOSED LOCATION OF EXCAVATION.
2) TAKE PRECAUTION TO AVOID DAMAGE TO GAS COMPANY INSTALLATIONS.
SEE PROVINCIAL REGULATION 21072 FOR DETAILS

LOCATION APPROVED UNDERGROUND STRUCTURES
SUPV. U/G STRUCTURES COMMITTEE DATE
NOTE:
LOCATION OF UNDERGROUND STRUCTURES AS SHOWN ARE BASED ON THE BEST INFORMATION AVAILABLE BUT NO GUARANTEE IS GIVEN THAT ALL EXISTING UTILITIES ARE SHOWN OR THAT THE GIVEN LOCATIONS ARE EXACT. CONFIRMATION OF EXISTENCE AND EXACT LOCATION OF ALL SERVICES MUST BE OBTAINED FROM THE INDIVIDUAL UTILITIES BEFORE PROCEEDING WITH CONSTRUCTION.

B.M. ELEV.	
CONSTRUCTION COMPLETION DATE: YYYY MM DD	
NO.	REVISIONS
	DATE BY

DESIGNED BY	NC	CHECKED BY	SC
DRAWN BY	RS	APPROVED BY	KZ
SCALE:		RELEASED FOR CONSTRUCTION	
HORIZONTAL	1:250	K.R. ZUREK	
VERTICAL	1:50	DATE	APRIL 30, 2012

ENGINEER'S SEAL
ORIGINAL SIGNED BY S.R.J. COURNOYER 12-04-30
CONSULTANT DRAWING NUMBER

THE CITY OF WINNIPEG
WATER AND WASTE DEPARTMENT
ENGINEERING DIVISION
2012 WATERMAIN RENEWALS
88 S OF BEAVERHILL BOULEVARD TO 46 E OF JADE PLACE
SHEET 3 OF 14
CITY DRAWING NUMBER D-12962