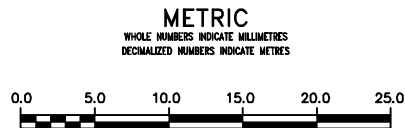
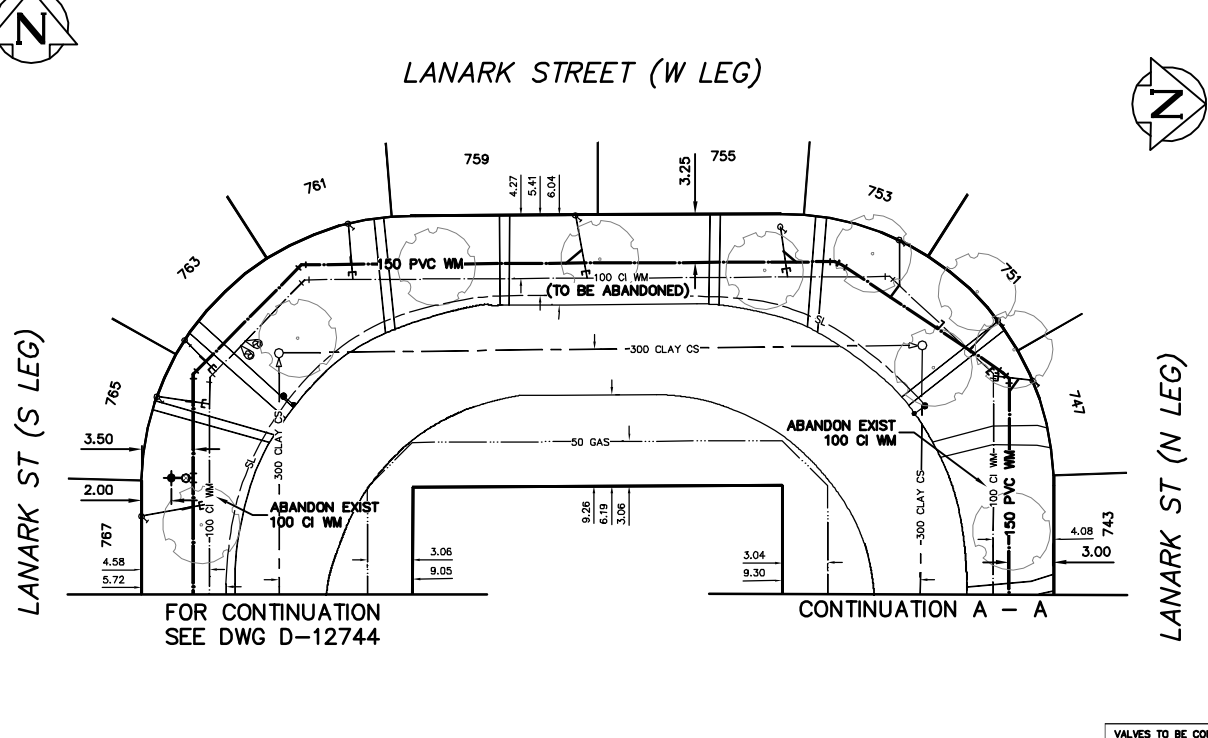
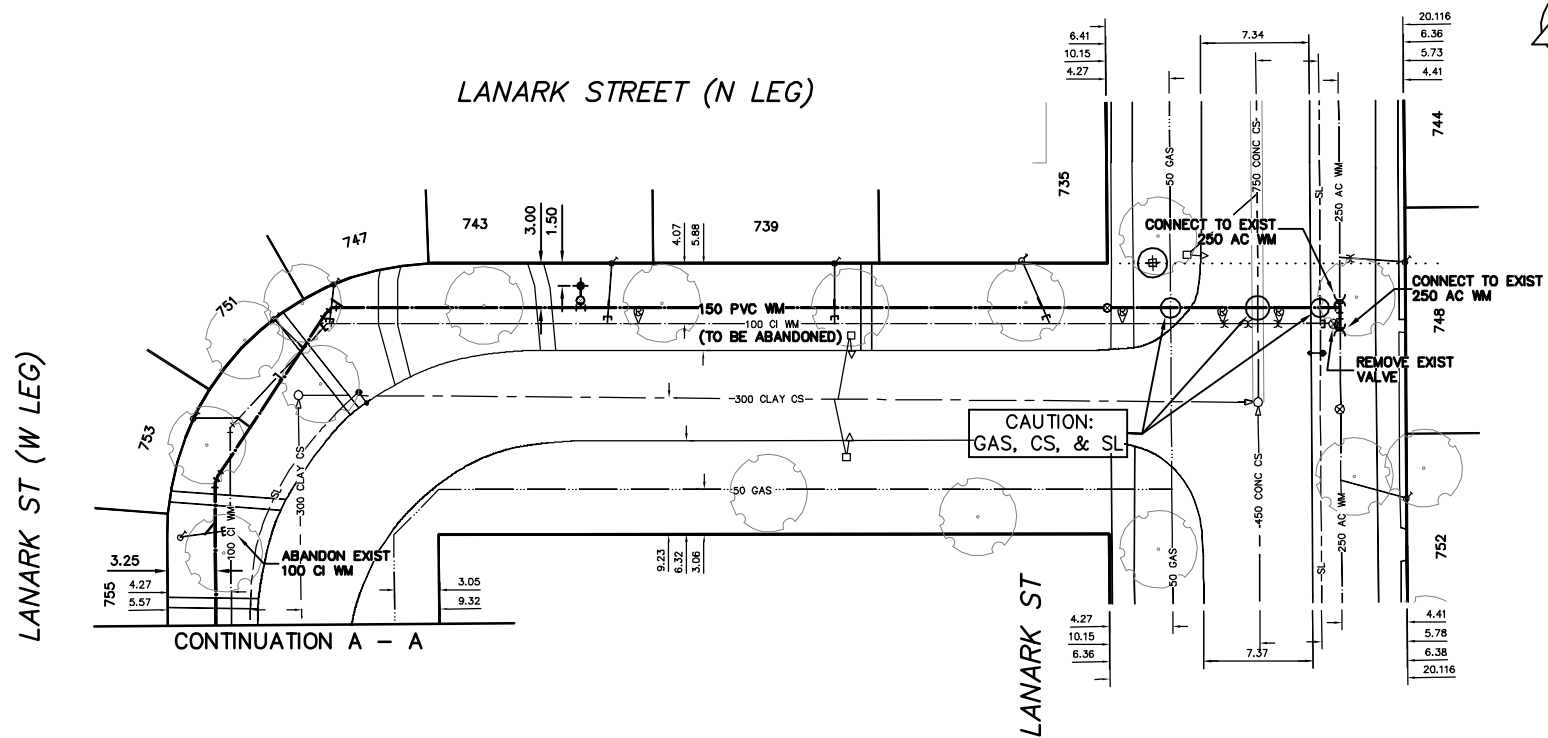


NOTE: CHAINAGES SHOWN ARE ALONG N \bar{L} OF LANARK ST. (N LEG)

NOTE: CHAINAGES SHOWN ARE ALONG W \bar{L} OF LANARK ST. (W LEG)



WARNING
IF POWER EQUIPMENT OR EXPLOSIVES ARE TO BE USED FOR EXCAVATION ON THIS PROJECT THE CONTRACTOR MUST:
1) NOTIFY THE GAS COMPANY OF THE PROPOSED LOCATION OF EXCAVATION.
2) TAKE PRECAUTION TO AVOID DAMAGE TO GAS COMPANY INSTALLATIONS.
SEE PROVINCIAL REGULATION 21072 FOR DETAILS

LOCATION APPROVED UNDERGROUND STRUCTURES
SUPV. U/G STRUCTURES COMMITTEE DATE
NOTE:
LOCATION OF UNDERGROUND STRUCTURES AS SHOWN ARE BASED ON THE BEST INFORMATION AVAILABLE BUT NO GUARANTEE IS GIVEN THAT ALL EXISTING UTILITIES ARE SHOWN OR THAT THE GIVEN LOCATIONS ARE EXACT. CONFIRMATION OF EXISTENCE AND EXACT LOCATION OF ALL SERVICES MUST BE OBTAINED FROM THE INDIVIDUAL UTILITIES BEFORE PROCEEDING WITH CONSTRUCTION.

B.M. ELEV.	
CONSTRUCTION COMPLETION DATE: YYYY MM DD	
NO.	REVISIONS
	DATE
	BY
	DATE

DESIGNED BY	RL	CHECKED BY	SC
DRAWN BY	CJH	APPROVED BY	KZ
SCALE:		RELEASED FOR CONSTRUCTION	
HORIZONTAL	1:250	KAS ZUREK	
VERTICAL	1:50		
DATE	2012 03 28	DATE	MARCH 28, 2012

ENGINEER'S SEAL
ORIGINAL SIGNED BY
S.R.J.
COURNOYER
12-03-28
CONSULTANT DRAWING NUMBER

THE CITY OF WINNIPEG
WATER AND WASTE DEPARTMENT
ENGINEERING DIVISION
2012 WATERMAIN RENEWALS

LANARK STREET (N LEG & W LEG)
LANARK STREET (W LEG) TO LANARK STREET &
LANARK STREET (N LEG) TO (S LEG)

SHEET 8 OF 11
CITY DRAWING NUMBER
D-12745