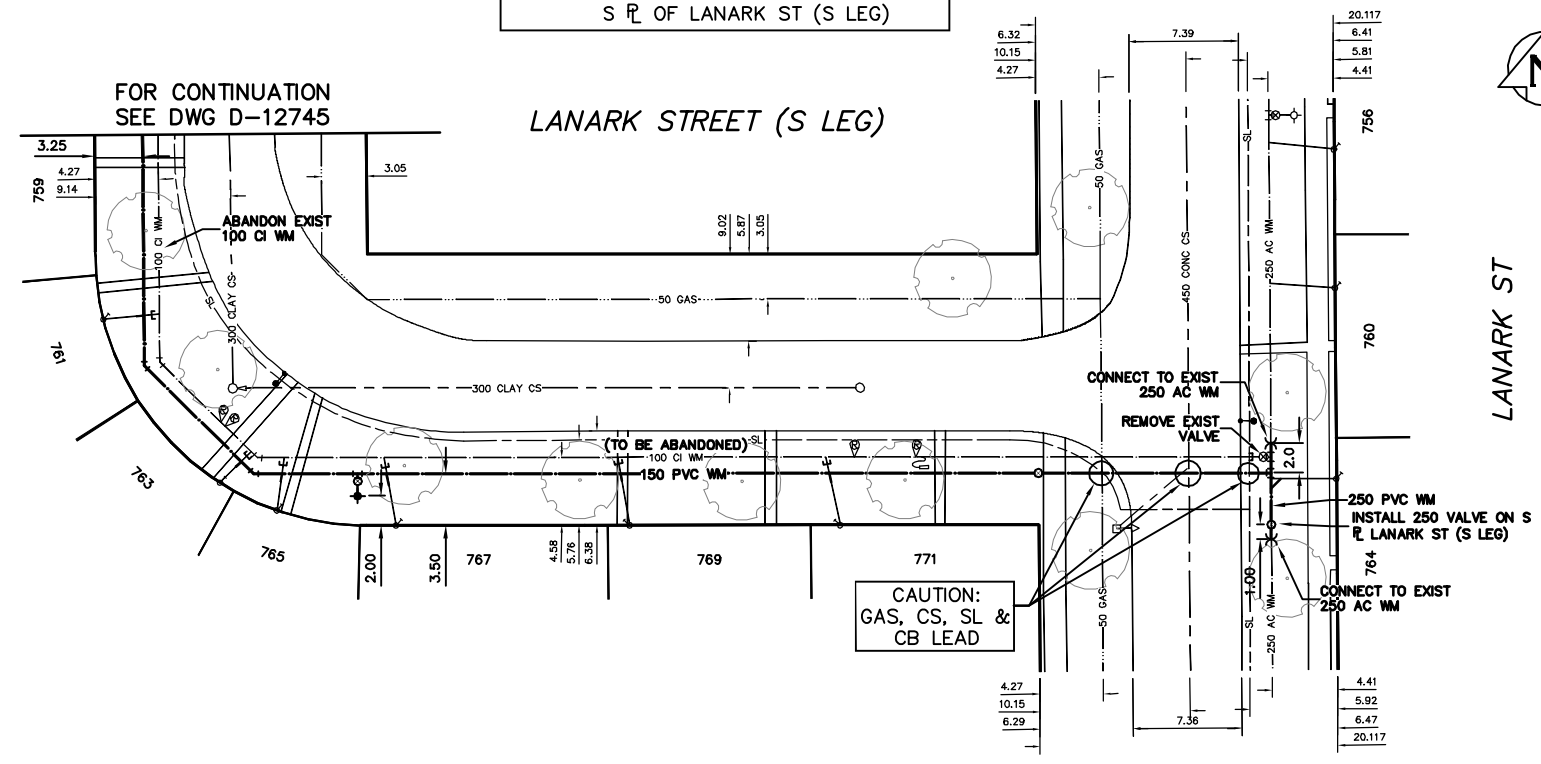


NOTE: CHAINAGES SHOWN ARE ALONG S LEG OF LANARK ST (S LEG)

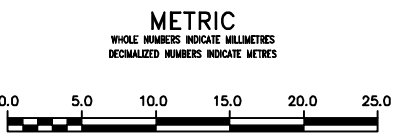
LANARK ST (W LEG)



WATER SERVICE INFORMATION

| ADDRESS | SIZE (mm) | SIZE (mm) | SHORT & LONG MEASUREMENT | CORP. LOCATION | REMARKS |
|---------------|-----------|-----------|--------------------------|----------------|-----------------|
| 735 LANARK ST | 20 | 20 | 1.76 WEL HSE | 1.9 E OF S/C | SERV. OFF N LEG |
| 739 LANARK ST | 20 | 20 | 5.73 WEL LANARK | OPP S/C | - |
| 743 LANARK ST | 20 | 20 | 1.51 WEL HSE | OPP S/C | - |
| 747 LANARK ST | 20 | 20 | 18.46 WEL LANARK | 0.3 W OF S/C | - |
| 748 LANARK ST | 20 | 20 | 0.20 WEL HSE | 0.3 W OF S/C | - |
| 753 LANARK ST | 20 | 20 | 33.42 WEL LANARK | 0.3 W OF S/C | - |
| 755 LANARK ST | 20 | 20 | 0.82 EWL HSE | 0.3 W OF S/C | - |
| 759 LANARK ST | 20 | 20 | 52.27 WEL LANARK | 0.3 N OF S/C | - |
| 761 LANARK ST | 20 | 20 | 2.96 SNL HSE | 0.3 N OF S/C | - |
| 763 LANARK ST | 20 | 20 | 2.94 WEL HSE | 0.1 E OF S/C | - |
| 765 LANARK ST | 20 | 20 | 56.22 WEL LANARK | 0.5 N OF S/C | - |
| 767 LANARK ST | 20 | 20 | 4.56 NSL HSE | 0.5 N OF S/C | - |
| 769 LANARK ST | 20 | 20 | 7.88 NSL LANARK (N LEG) | 1.7 E OF S/C | - |
| 771 LANARK ST | 20 | 20 | 1.55 SNL HSE | 0.5 N OF S/C | - |
| 773 LANARK ST | 20 | 20 | 0.15 SNL LANARK (N LEG) | 0.5 N OF S/C | - |
| 775 LANARK ST | 20 | 20 | 1.58 NNL HSE | 0.8 N OF S/C | - |
| 777 LANARK ST | 20 | 20 | 11.0 NNL LANARK (S LEG) | 0.8 N OF S/C | - |
| 779 LANARK ST | 20 | 20 | 2.41 SNL HSE | 0.3 N OF S/C | - |
| 781 LANARK ST | 20 | 20 | 2.40 SNL LANARK (S LEG) | 0.3 N OF S/C | - |
| 783 LANARK ST | 20 | 20 | 1.76 SNL HSE | 0.3 N OF S/C | - |
| 785 LANARK ST | 20 | 20 | 4.34 SNL LANARK (S LEG) | 0.3 N OF S/C | - |
| 787 LANARK ST | 20 | 20 | OPP EL HSE | 0.3 E OF S/C | - |
| 789 LANARK ST | 20 | 20 | 55.20 WEL LANARK | 0.3 E OF S/C | - |
| 791 LANARK ST | 20 | 20 | 1.78 SNL HSE | OPP S/C | - |
| 793 LANARK ST | 20 | 20 | 3.12 NSL LANARK (S LEG) | OPP S/C | - |
| 795 LANARK ST | 20 | 20 | 5.75 WEL HSE | 0.5 E OF S/C | - |
| 797 LANARK ST | 20 | 20 | 51.52 WEL LANARK | 0.5 E OF S/C | - |
| 799 LANARK ST | 20 | 20 | 1.45 EWL HSE | 0.8 W OF S/C | - |
| 801 LANARK ST | 20 | 20 | 43.49 WEL LANARK | 0.8 W OF S/C | - |
| 803 LANARK ST | 20 | 20 | OPP WL HSE | 0.8 W OF S/C | - |
| 805 LANARK ST | 20 | 20 | 27.67 WEL LANARK | 0.8 W OF S/C | - |
| 807 LANARK ST | 20 | 25 | 1.10 EWL HSE | 1.0 W OF S/C | - |
| 809 LANARK ST | 20 | 25 | 13.57 WEL LANARK | 1.0 W OF S/C | - |

*SERVICES TO BE RENEWED TO PL. ALL OTHERS TO BE RECONNECTED



WARNING
IF POWER EQUIPMENT OR EXPLOSIVES ARE TO BE USED FOR EXCAVATION ON THIS PROJECT THE CONTRACTOR MUST:
1) NOTIFY THE GAS COMPANY OF THE PROPOSED LOCATION OF EXCAVATION.
2) TAKE PRECAUTION TO AVOID DAMAGE TO GAS COMPANY INSTALLATIONS.
SEE PROVINCIAL REGULATION 21072 FOR DETAILS

LOCATION APPROVED UNDERGROUND STRUCTURES
SUPV. U/G STRUCTURES COMMITTEE DATE
NOTE:
LOCATION OF UNDERGROUND STRUCTURES AS SHOWN ARE BASED ON THE BEST INFORMATION AVAILABLE BUT NO GUARANTEE IS GIVEN THAT ALL EXISTING UTILITIES ARE SHOWN OR THAT THE GIVEN LOCATIONS ARE EXACT. CONFIRMATION OF EXISTENCE AND EXACT LOCATION OF ALL SERVICES MUST BE OBTAINED FROM THE INDIVIDUAL UTILITIES BEFORE PROCEEDING WITH CONSTRUCTION.

| | |
|--|-----------|
| B.M. ELEV. | |
| CONSTRUCTION COMPLETION DATE: YYYY MM DD | |
| NO. | REVISIONS |
| DATE | BY |

| | | | |
|-------------|------------|---------------------------|----------------|
| DESIGNED BY | RL | CHECKED BY | SC |
| DRAWN BY | CJH | APPROVED BY | KZ |
| SCALE: | | RELEASED FOR CONSTRUCTION | |
| HORIZONTAL | 1:250 | KAS ZUREK | |
| VERTICAL | 1:50 | | |
| DATE | 2012 03 28 | DATE | MARCH 28, 2012 |

ENGINEER'S SEAL
ORIGINAL SIGNED BY
S.R.J.
COURNOYER
12-03-28
CONSULTANT DRAWING NUMBER

THE CITY OF WINNIPEG
WATER AND WASTE DEPARTMENT
ENGINEERING DIVISION
2012 WATERMAIN RENEWALS
LANARK STREET (S LEG)
LANARK STREET (W LEG) TO LANARK STREET
SHEET 7 OF 11
CITY DRAWING NUMBER
D-12744

BID OPPORTUNITY: 271-2012
CONTRACT NUMBER: 2
FILE PATH: R:\DRAWINGS\WATER\RENEWAL\2012_RENEWALS\CONTRACT 2\
FILE NAME: D-12744.dwg