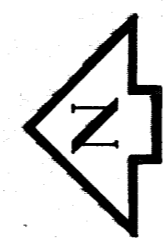
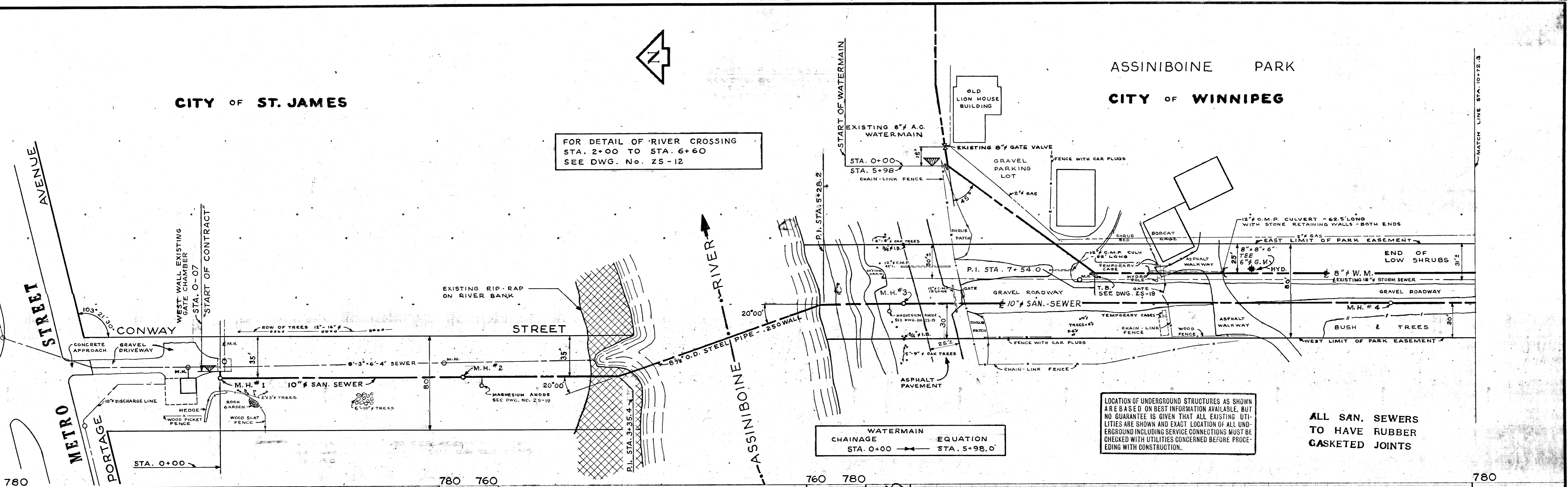


CITY OF ST. JAMES

ASSINIBOINE PARK
CITY OF WINNIPEG



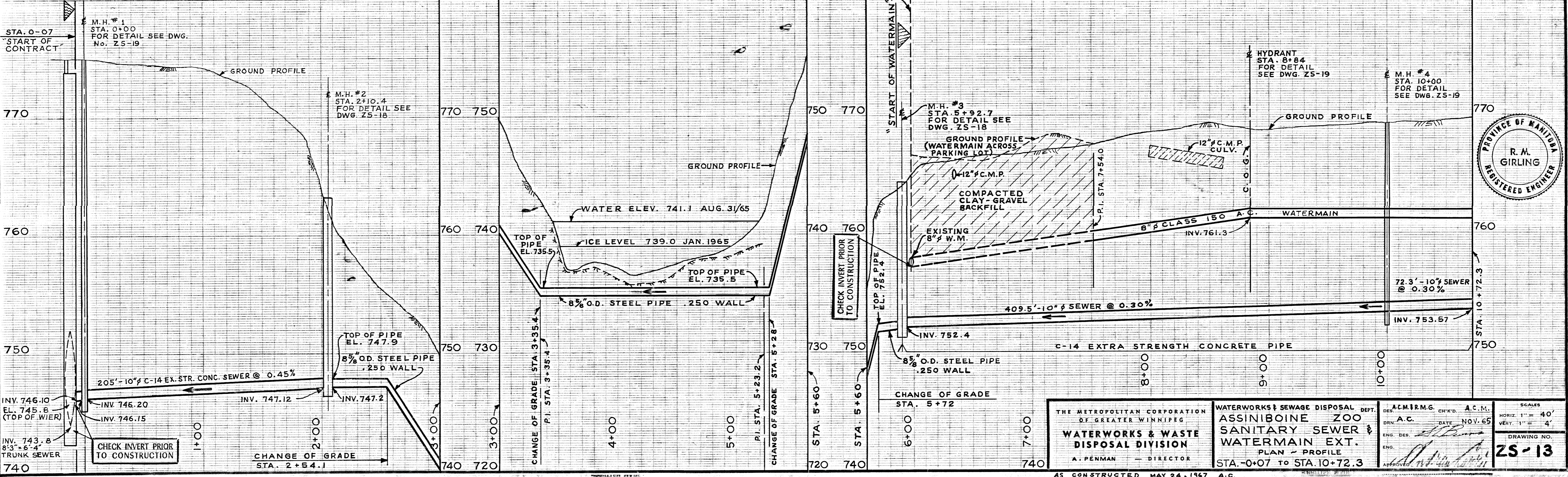
FOR DETAIL OF RIVER CROSSING
STA. 2+00 TO STA. 6+60
SEE DWG. No. Z5-12



LOCATION OF UNDERGROUND STRUCTURES AS SHOWN ARE BASED ON BEST INFORMATION AVAILABLE, BUT NO GUARANTEE IS GIVEN THAT ALL EXISTING UTILITIES ARE SHOWN AND EXACT LOCATION OF ALL UNDERGROUND INCLUDING SERVICE CONNECTIONS MUST BE CHECKED WITH UTILITIES CONCERNED BEFORE PROCEEDING WITH CONSTRUCTION.

ALL SAN. SEWERS
TO HAVE RUBBER
GASKETED JOINTS

WATERMAIN EQUATION
CHAINAGE STA. 0+00 EQUATION STA. 5+98.0



THE METROPOLITAN CORPORATION OF GREATER WINNIPEG WATERWORKS & WASTE DISPOSAL DIVISION A. PENMAN - DIRECTOR	WATERWORKS & SEWAGE DISPOSAL DEPT. ASSINIBOINE ZOO SANITARY SEWER & WATERMAIN EXT. PLAN - PROFILE STA. 0+07 TO STA. 10+72.3	A.C.M. R.M.G. CH'KD. A.C.M. DES. A.C. DATE NOV. 65 ENG. DES. [Signature] ENG. [Signature]	SCALES HORIZ. 1" = 40' VERT. 1" = 4' DRAWING NO. Z5-13
	AS CONSTRUCTED MAY 24, 1967 A.C.		
	ANDREW CURRIE Director of Parks & Protection		