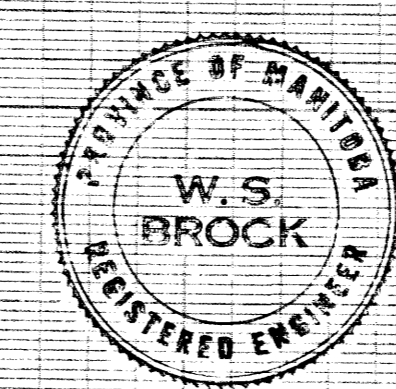
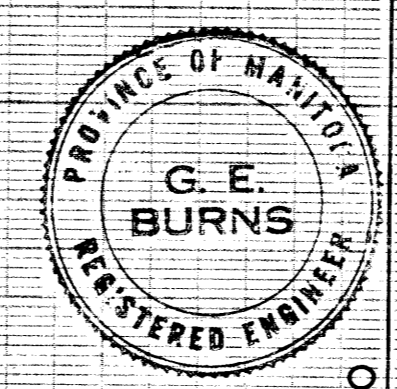
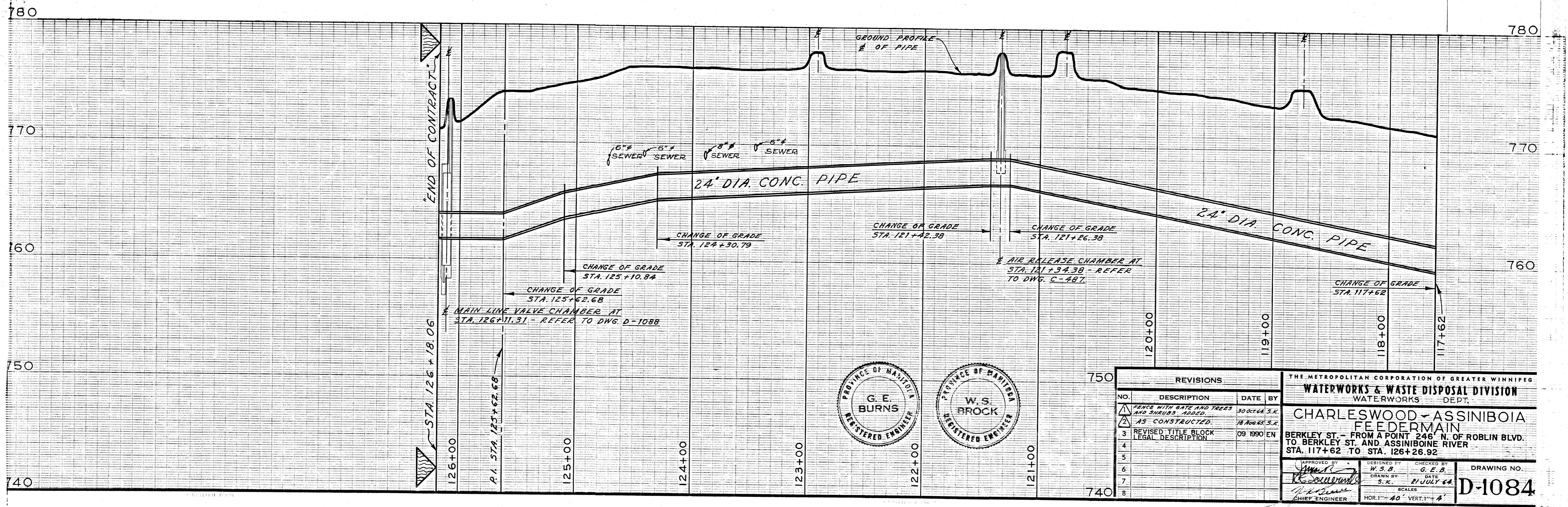


COMPILED FROM REG'D. PLAN NOS. 1213+5477,
COMPILED FROM FIELD BOOKS No. F-100, F-102,
+ F-103.
LOT 1

RURAL MUN. OF CHARLESWOOD



REVISIONS		
NO.	DESCRIPTION	DATE BY
1	REVISIONS	
2	REVISIONS	
3	REVISIONS	
4	REVISIONS	
5	REVISIONS	
6	REVISIONS	
7	REVISIONS	
8	REVISIONS	

THE METROPOLITAN CORPORATION OF GREATER WINNIPEG
WATERWORKS & WASTE DISPOSAL DIVISION
 WATERWORKS DEPT.
CHARLESWOOD - ASSINIBOIA
FEEDER MAIN
 BERKLEY ST. - FROM A POINT 246' N. OF ROBLIN BLVD.
 TO BERKLEY ST. AND ASSINIBOINE RIVER
 STA. 117+62 TO STA. 126+26.92

DESIGNED BY: *[Signature]*
 DRAWN BY: S.K.
 CHECKED BY: G.E.B.
 DATE: 21 JULY 68

SCALE: HOR. 1" = 40' VERT. 1" = 4'
 DRAWING NO. **D-1084**