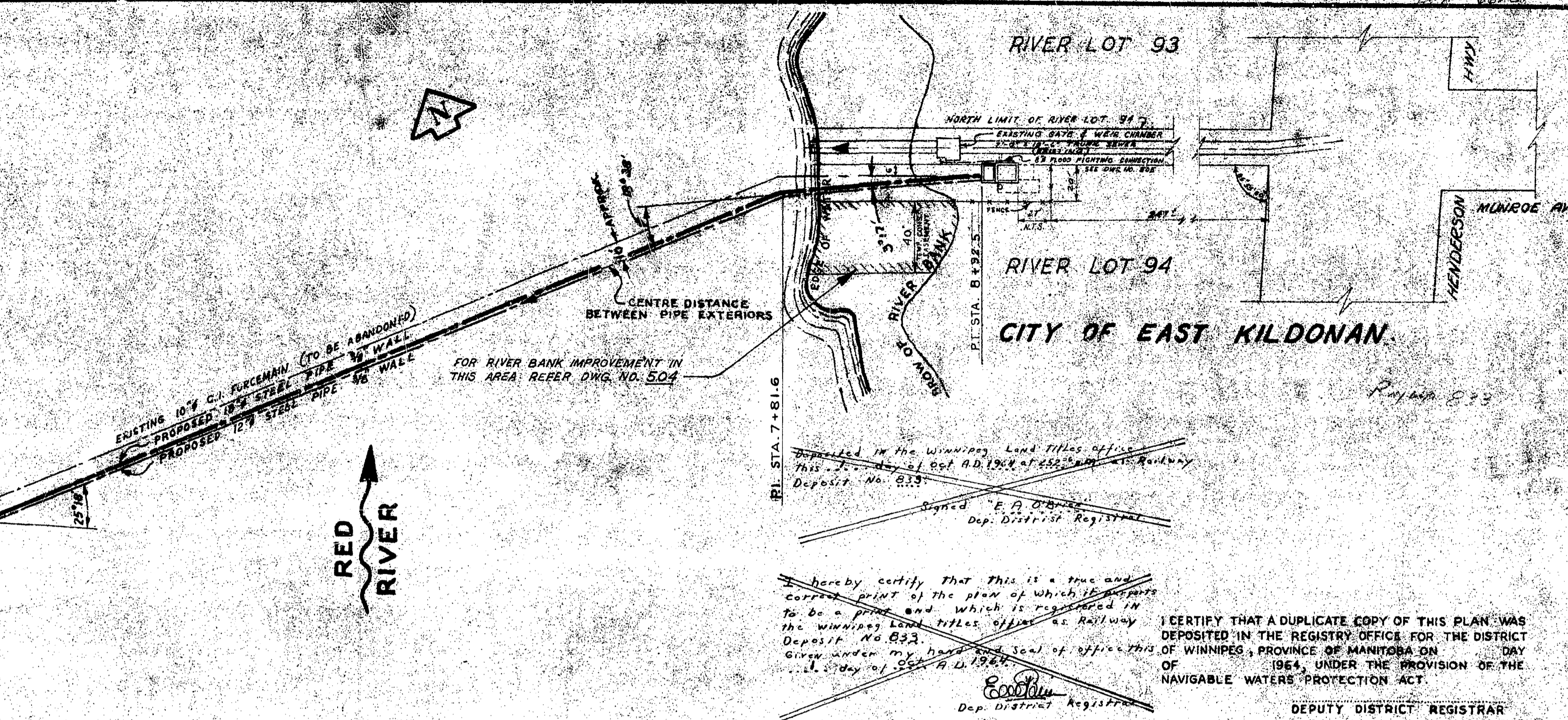
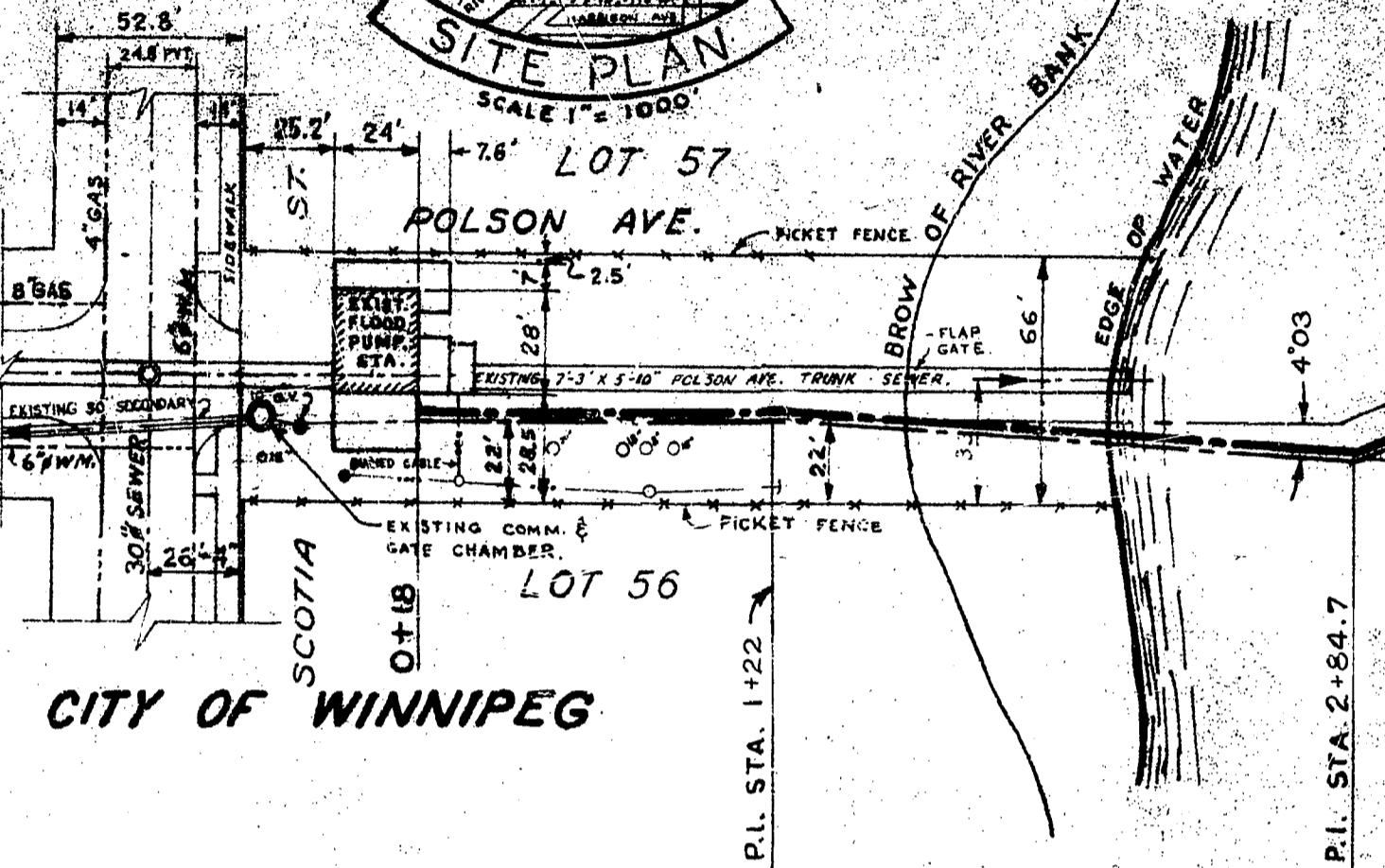
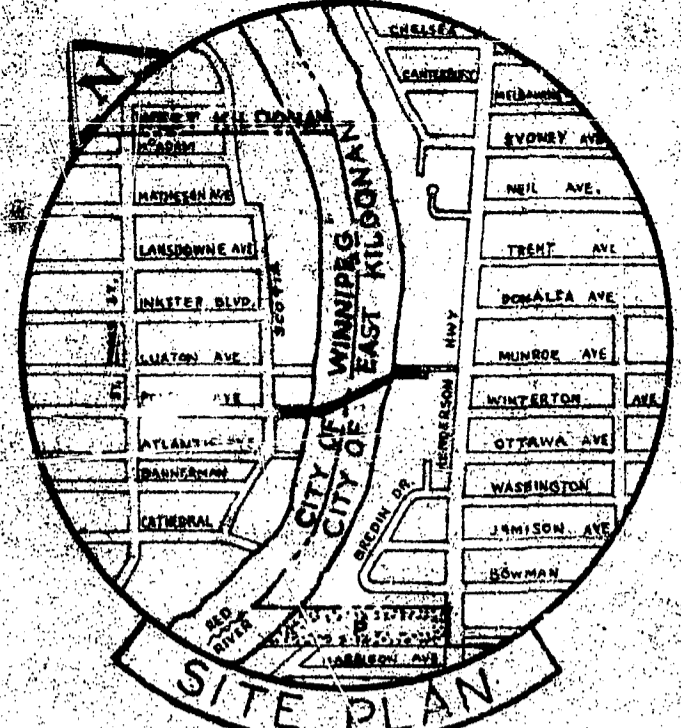


Doc. 665



Deposited in the Winnipeg Land Titles office
 this 1st day of Oct. A.D. 1964 at 4:50 o'clock p.m.
 Deposit No. 833

Signed: E. A. Gibling
 Dep. District Registrar

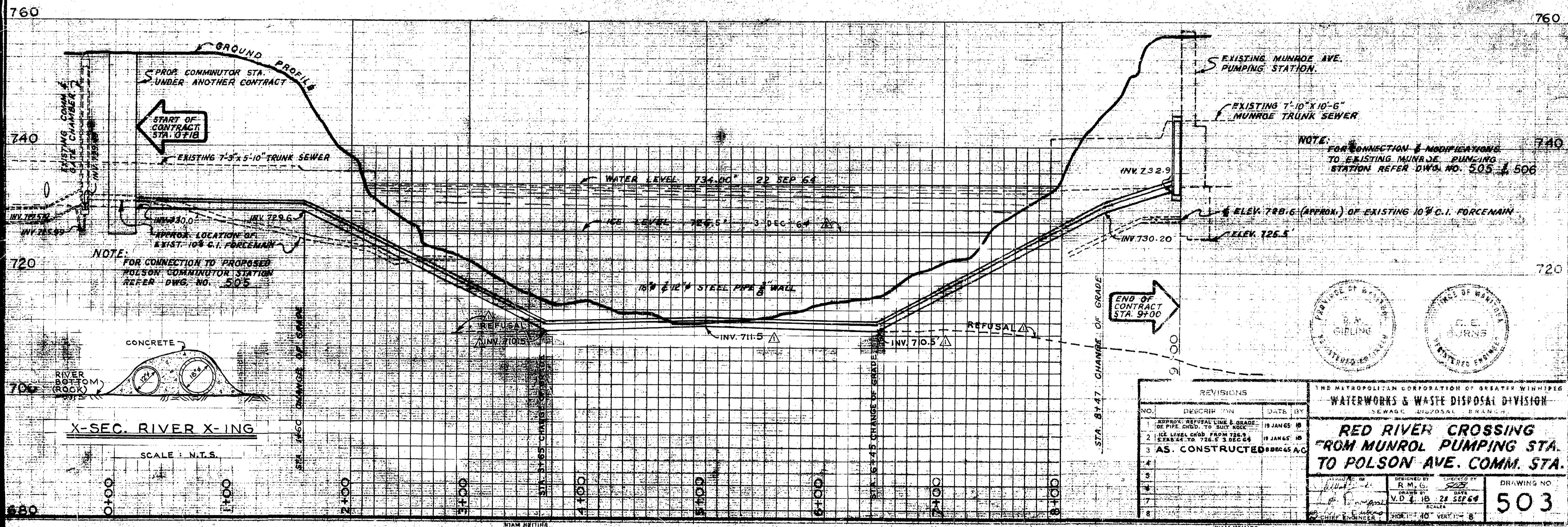
I hereby certify that this is a true and correct print of the plan of which it purports to be a print and which is registered in the Winnipeg Land Titles office as Railway Deposit No. 833.
 Given under my hand and seal of office this 1st day of Oct. A.D. 1964

E. A. Gibling
 Dep. District Registrar

SEE NOTE BELOW TITLE.

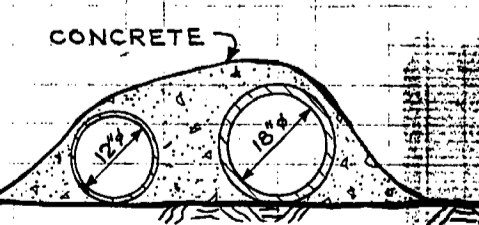
I CERTIFY THAT A DUPLICATE COPY OF THIS PLAN WAS DEPOSITED IN THE REGISTRY OFFICE FOR THE DISTRICT OF WINNIPEG, PROVINCE OF MANITOBA ON DAY OF 1964, UNDER THE PROVISION OF THE NAVIGABLE WATERS' PROTECTION ACT.

DEPUTY DISTRICT REGISTRAR



NOTE:
 FOR CONNECTION & MODIFICATIONS TO EXISTING MUNROE PUMPING STATION REFER DWG. NO. 505 & 506

NOTE:
 FOR CONNECTION TO PROPOSED POLSON COMMINUTOR STATION REFER DWG. NO. 505



STA. 8+47 CHANGE OF GRADE

REVISIONS		
NO.	DESCRIPTION	DATE BY
1	APPROX. REFUSAL LINE & GRADE OF PIPE CHGD. TO SUIT REQ.	19 JAN 65 JB
2	ICE LEVEL CHGD. FROM 726.9 TO 726.5 3 DEC 64	19 JAN 65 JB
3	AS. CONSTRUCTED	08 DEC 65 A.C.
4		
5		
6		
7		
8		

THE METROPOLITAN CORPORATION OF GREATER WINNIPEG
 WATERWORKS & WASTE DISPOSAL DIVISION
 SEWAGE DISPOSAL BRANCH

RED RIVER CROSSING FROM MUNROE PUMPING STA. TO POLSON AVE. COMM. STA.

DESIGNED BY: R.M.G.
 DRAWN BY: V.D.L. JB
 DATE: 28 SEP 64
 SCALE: HORIZ. 1" = 40' VERT. 1" = 8'

DRAWING NO. **503**

NOTE:
 FOR REGD. PLAN ORIGINAL, NEED WITH WINNIPEG LAND TITLES OF DEPT. OF PUBLIC WORKS OF W.A. SEE SERIAL OF DWG. NO. 503