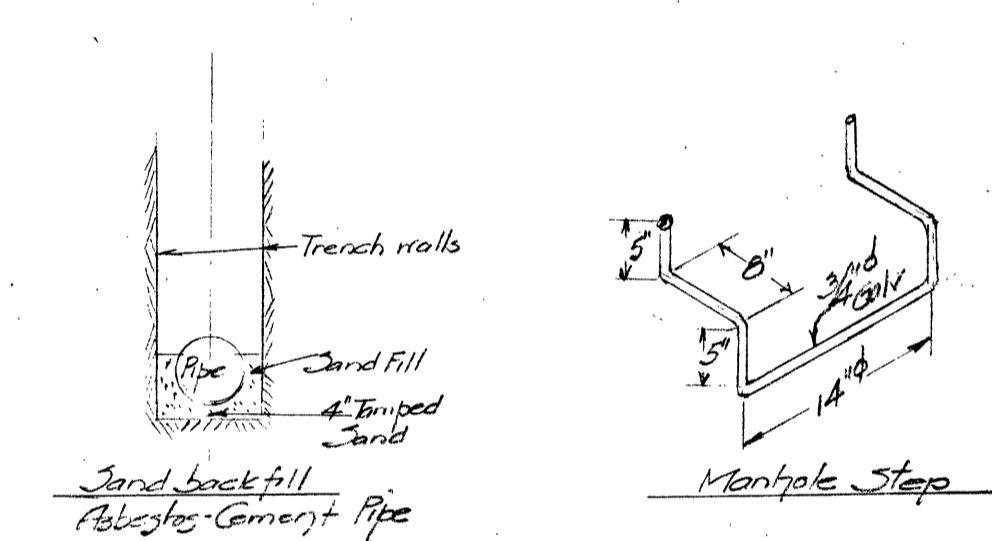
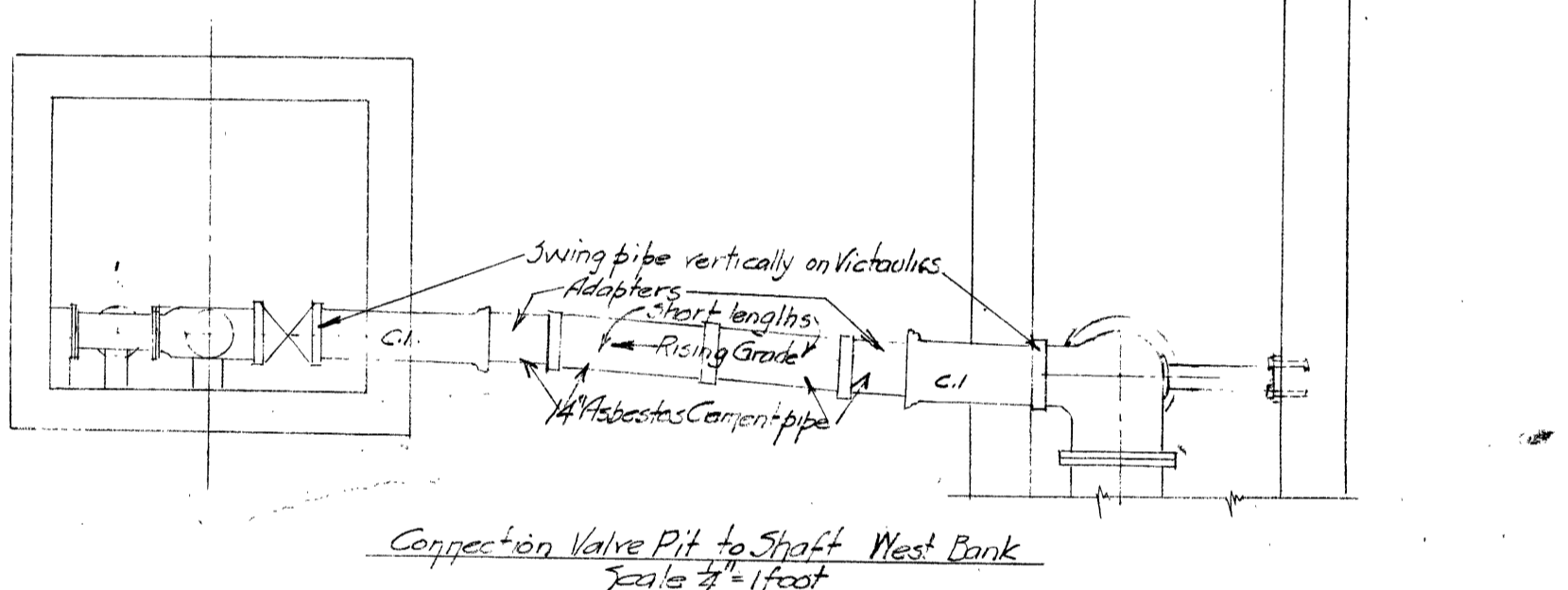
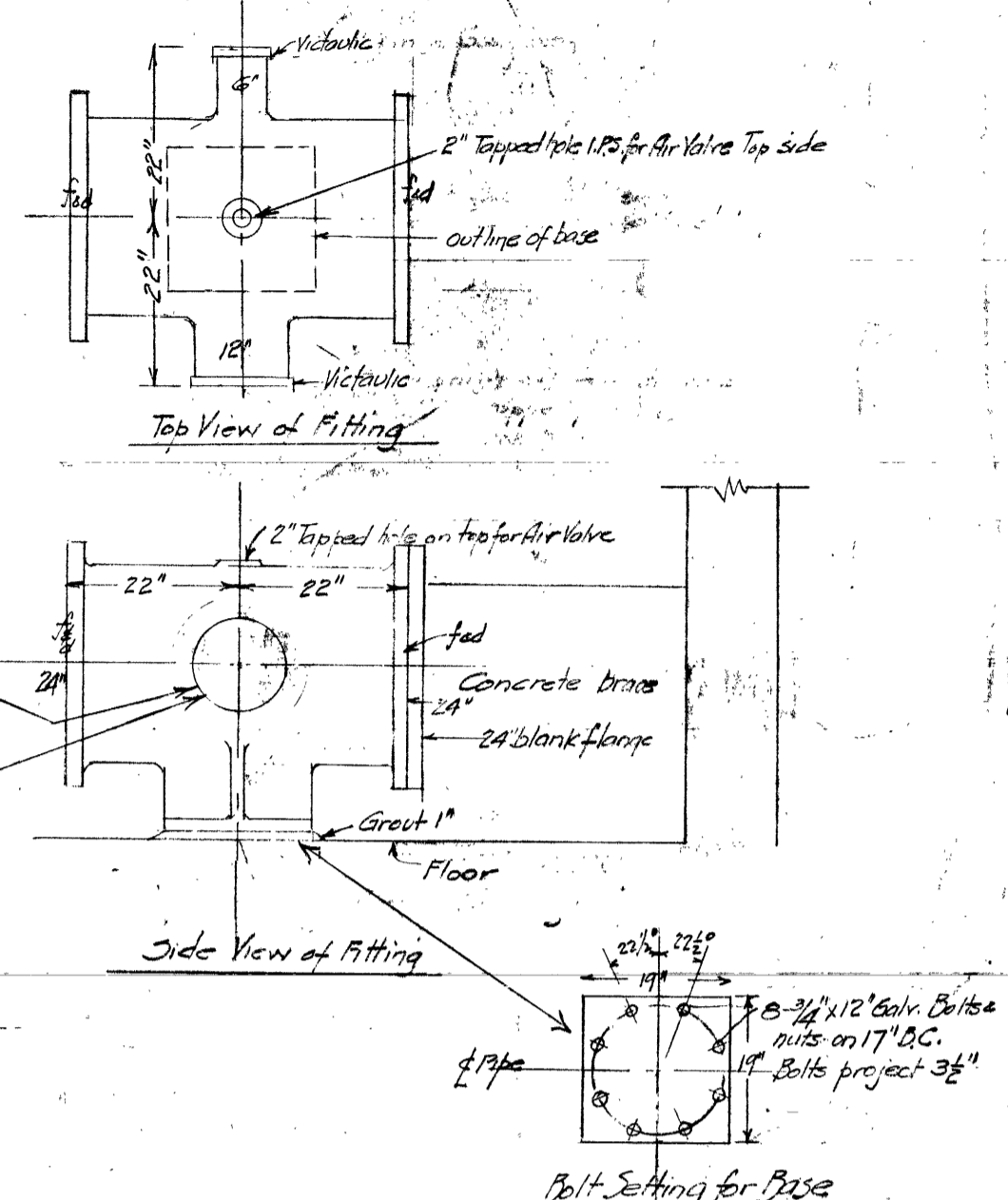
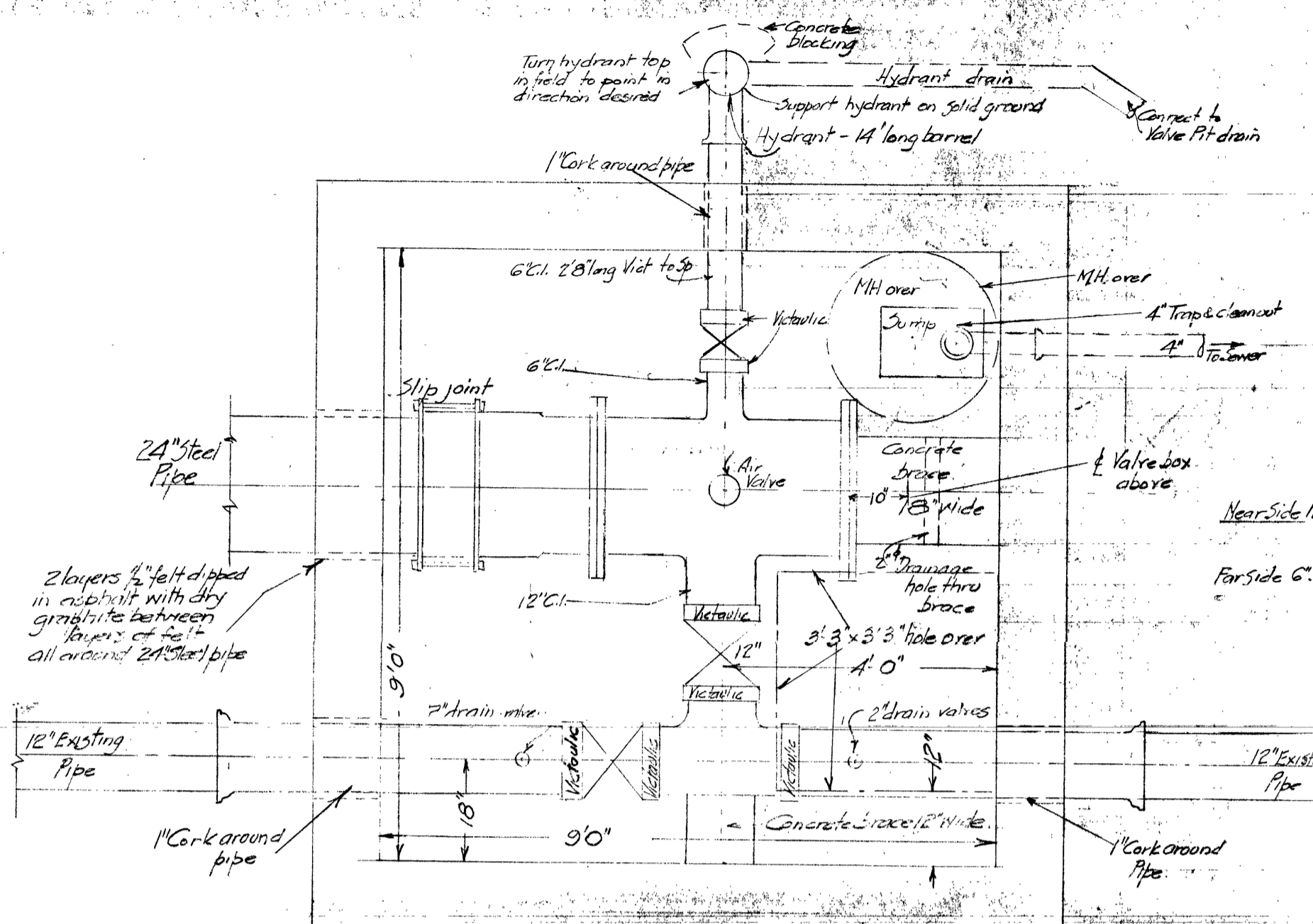
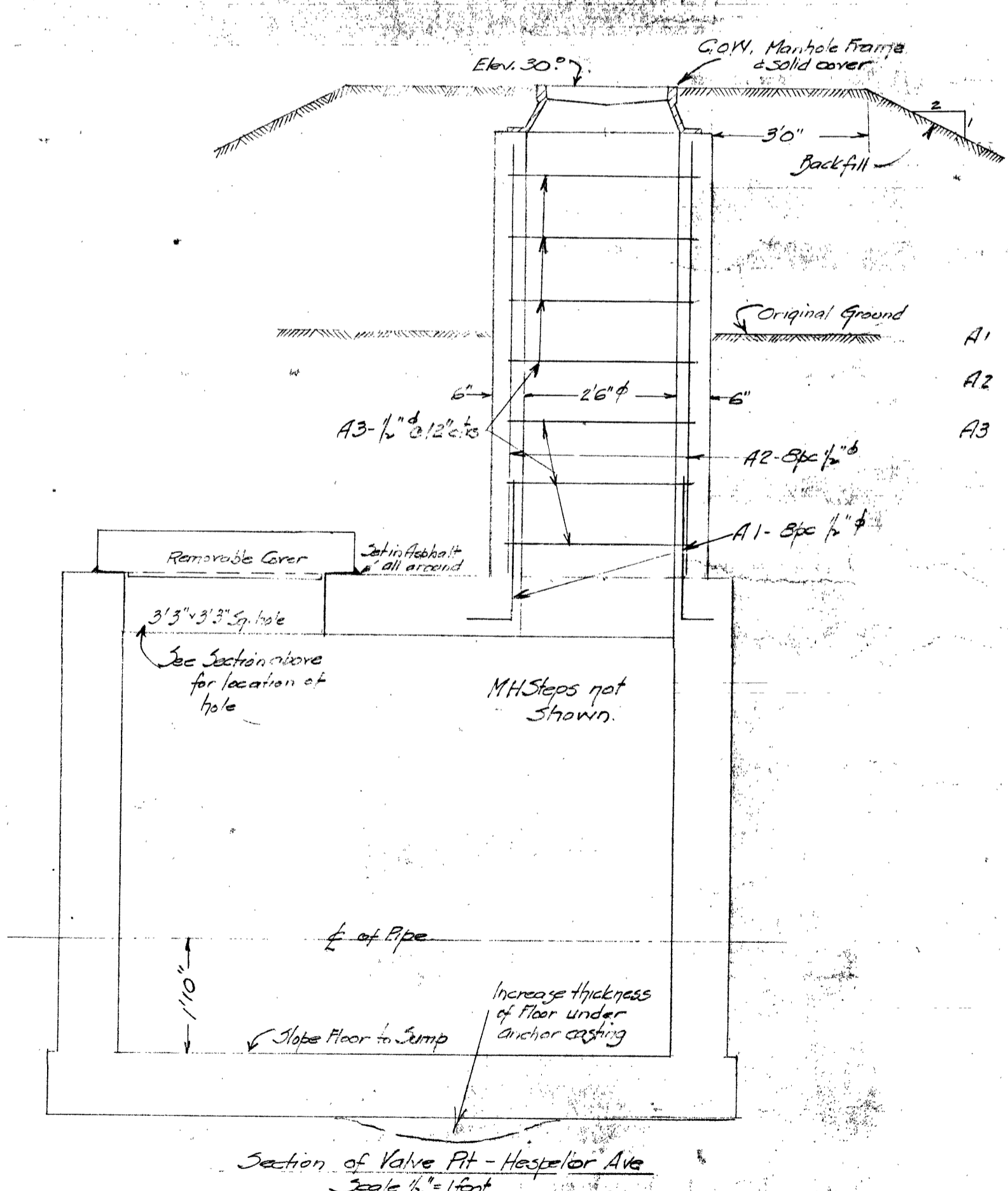


Outlet of 4\"/>



Valve Pit - Hespler Ave
Scale 1/2\"/>



- Extra Steel for MH shaft
- A1 8pc 1/2\"/>
 - A2 8pc 1/2\"/>
 - A3 7pc 1/2\"/>

Material West Side of River	Material Valve Pit East Side of River
1 only 12x12x10 C.I. Cross Jct. V.V.V. Ft.	6\"/>
Special Pipe - Class C - C.I. 1pc 14\"/>	1pc 6\"/>
Victaulic Couplings 4-12\"/>	1pc 6\"/>
Gate Valves 1-14\"/>	1 only 24\"/>
10\"/>	1 only 20\"/>
2 2\"/>	3 only Extension Valve Boxes - extend to B'
2\"/>	5 only 2\"/>
2\"/>	3 - 2\"/>
4\"/>	1 only 2\"/>
Valve Stems for Valves 3 required	1 - 4\"/>
14\"/>	1 - 4\"/>
24\"/>	1 pc 4\"/>
24\"/>	2 - 24\"/>
14\"/>	2 - 2\"/>
14\"/>	2 - 1\"/>
14\"/>	2 - 1\"/>
14\"/>	2 - 1\"/>
60\"/>	2 - 1\"/>

Date	No	Revision	Appr	By	CHK
Dec 13, 54	1	24\"/>			

Water Main Crossing of Red River
Redwood Avenue
Valve Pits

CITY OF WINNIPEG
ENGINEERING DEPARTMENT
W. D. HURST, CITY ENGINEER
A. J. S. TAUNTON, DEPUTY CITY ENGINEER

APPROVED

SCALE
As shown

12-532