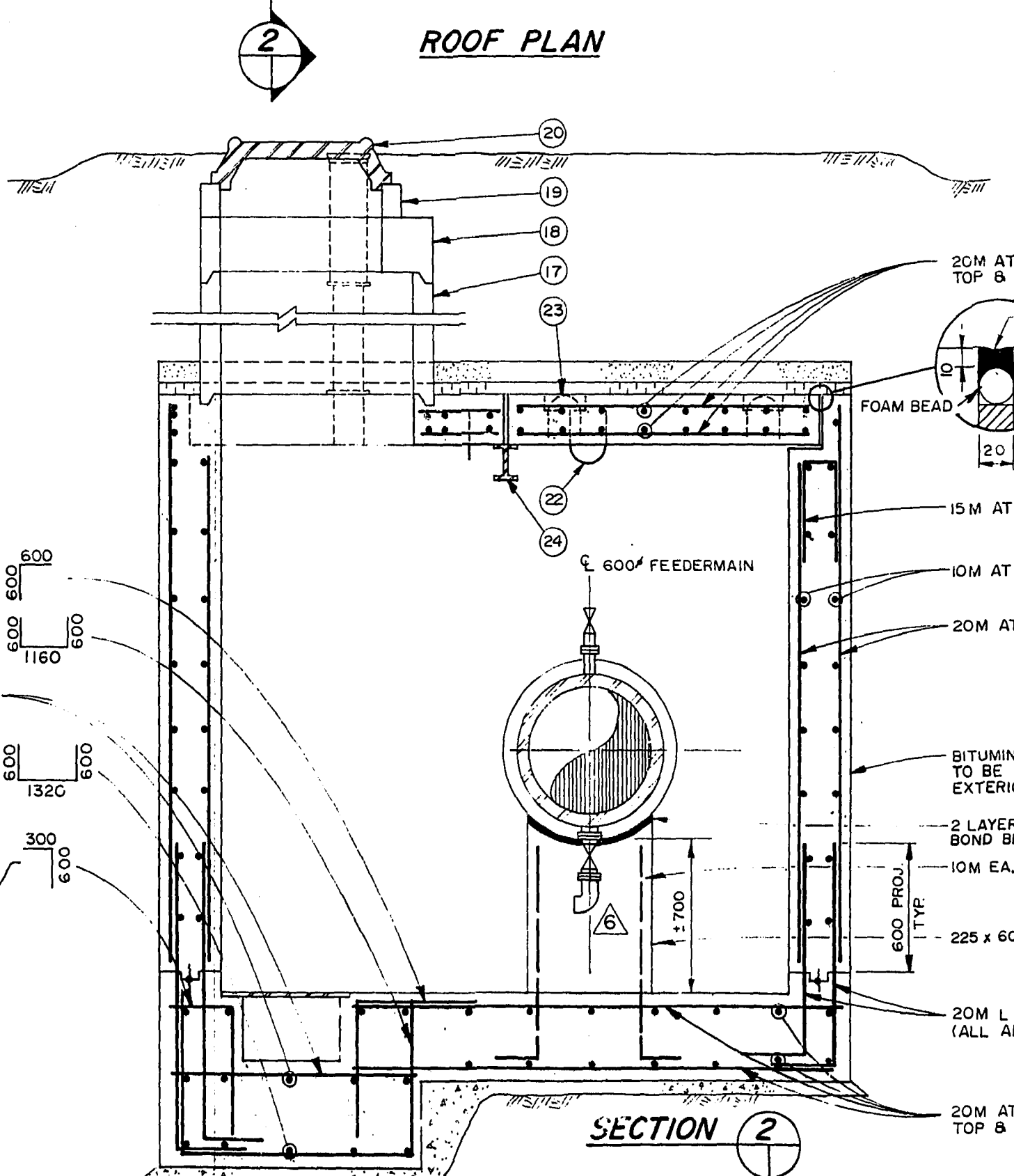
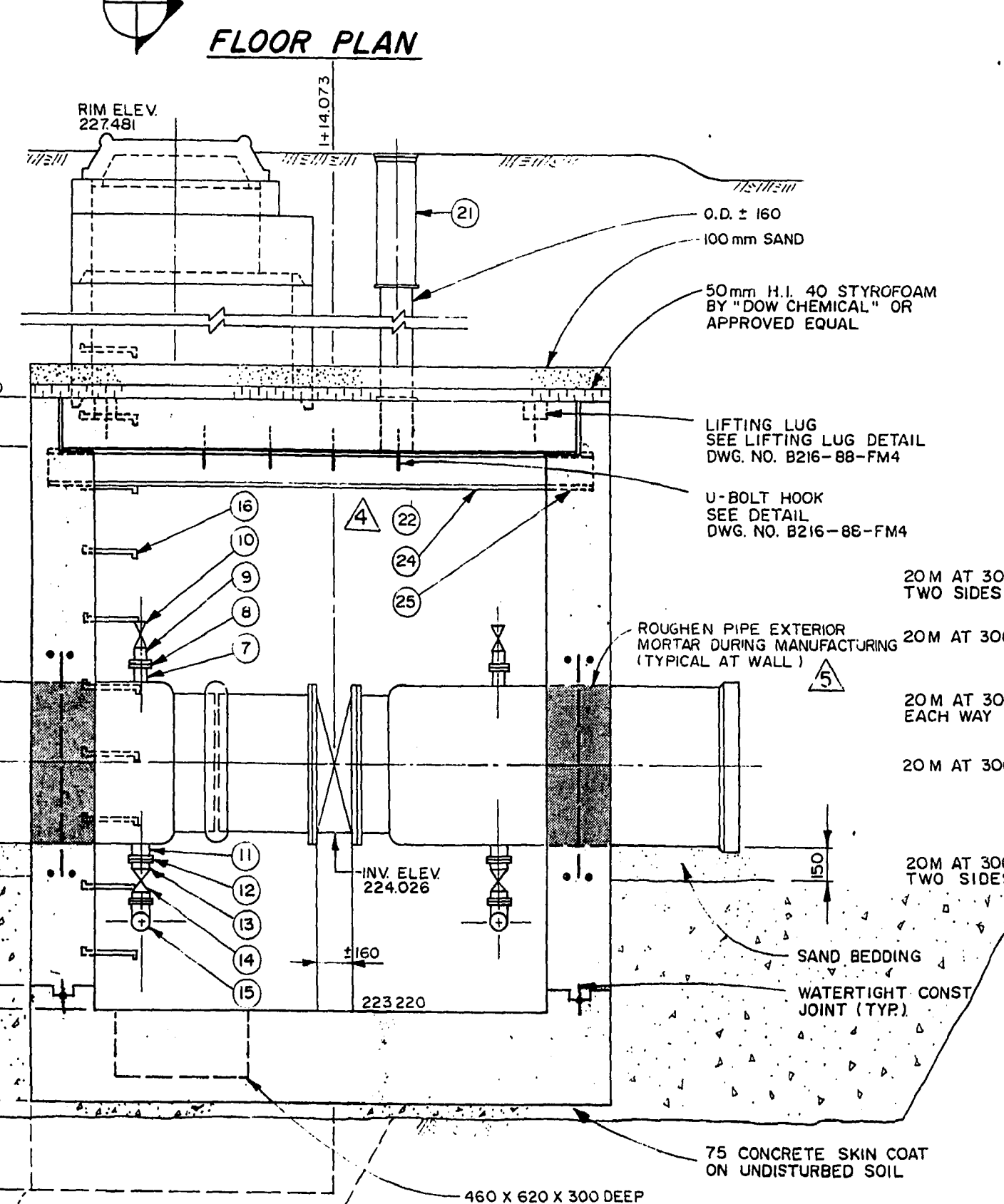
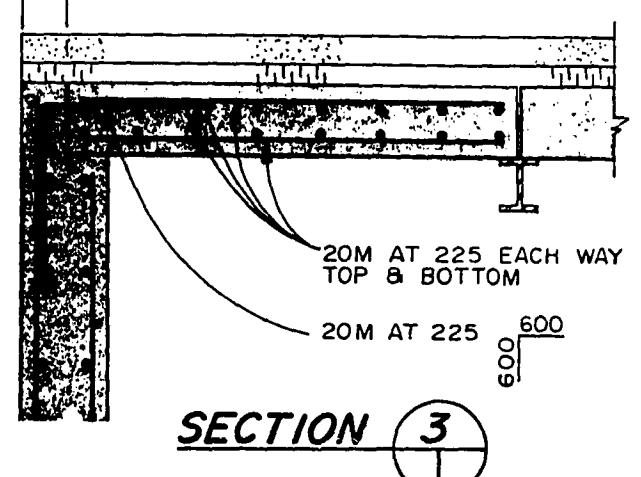
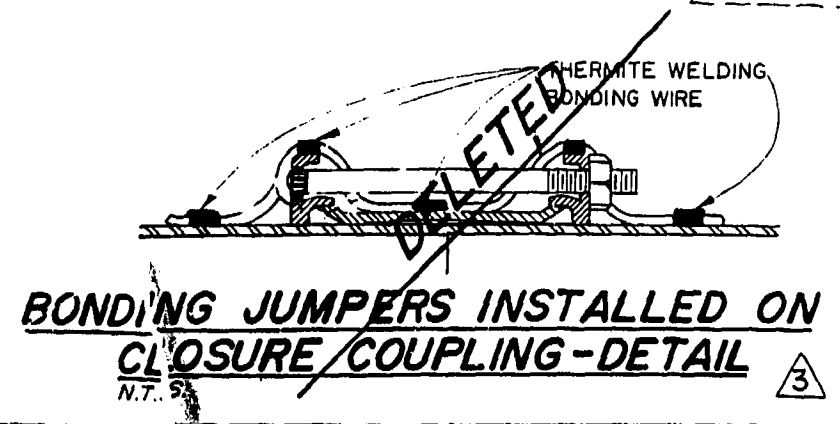


LIST OF MATERIALS

NO.	DESCRIPTION	LENGTH	QUANTITY	DETAIL DRAWING NO.
1	600 O Closure Coupling Romac 400 610 O.D.		2	B216-88-FM2 -FM3
2	600 U Prestressed Concrete Pipe Wall Piece (Plain end to Victaulic Style 51)	1470	1	-FM3
3	600 U Victaulic Coupling Style 51		1	-FM3
4	600 U Concrete Pipe Adaptor (Victaulic #51 to Flange)	430	1	-FM3
5	600 U Short Body Butterfly Valve, See Notes Below Jenkins AWWA Butterfly Valve	203	1	-FM3



6	600 U Prestressed Concrete Pressure Pipe Wall Piece (Flange to Bell)	1772	1	-FM3
7	50 U Cast Bronze or Brass Nipple (Threaded)	125	2	-FM3
8	50 U Cast Bronze or Brass Flange (Threaded)		2	-FM3
9	50 U Cast Bronze or Brass Nipple (Threaded)		2	-FM3
10	50 U Bronze Gate Valve (Threaded), Kitz No. 05-200		2	-FM3
11	75 U Cast Bronze or Brass Nipple (Threaded)	125	2	-FM3
12	75 U Cast Bronze or Brass Flange (Threaded)		2	-FM3
13	75 U Cast Bronze or Brass Nipple (Threaded)	125	2	-FM3
14	75 U Bronze Gate Valve (Threaded), Kitz No. 27-300		2	-FM3
15	75 U Cast Bronze or Brass 90° Street Elbow (Threaded)		2	-FM3
16	Standard City of Winnipeg Manhole Rungs at 300 O.C.		As Required	-FM3
17	900 U ASTM C-76 Class II Precast Manhole Riser Sections		As Required	CW SD-00 -FM3
18	900 U to 750 U ASTM C-76 Class II Precast Concrete Eccentric Flat Top Reducer		1	CW SD-101 -FM3
19	750 U ASTM C-76 Class II Precast Concrete Manhole Riser Section		As Required	CW SD-101 -FM3
20	Standard City of Winnipeg Manhole Frame With Solid Cover		1	-FM3 CW SD-104 CW SD-105
21	Standard City of Winnipeg Hinged Cover Valve Box c/w Valve Stem Extension With AWWA Nut		1	-FM3 CW SD-100
22	U-Bolt Hooks - Galvanized		4	-FM4
23	Lifting Lugs - Galvanized		4	-FM4
24	Steel Beam, Galvanized W 200 x 36 (640.21-300M)		2550	-FM3
25	Steel Bearing Plate, Galvanized (225 x 165 x 10)		2	-FM3
26	Four Section Mitred Steel Bend, Welded, Epoxy Coated and Lined		1	-FM4
27	Serrated Aluminum Grating Bearing Bars 32 x 4.8 @ 30 O.C. c/w Frame and Anchors.		1	-FM4
28	Two Section Mitred Steel Bend, Welded, Epoxy Coated and Lined		1	-FM4
29	600 O Closure Coupling Romac 400 655 O.D.		1	-FM2



NOTE

- CONCRETE SHALL BE TYPE 50 SULPHATE RESISTANT.
- REINFORCING STEEL SHALL CONFORM TO C.S.A. G30.12-M, GRADE 400.
- CONCRETE COVER ON REINFORCING 50mm

LOCATION APPROVED UNDERGROUND STRUCTURES

DATE: 07/11/88
 SUPV. OF STRUCTURES COMMITTEE

NOTE:
 LOCATION OF UNDERGROUND STRUCTURES AS SHOWN ARE BASED ON THE BEST INFORMATION AVAILABLE BUT NO GUARANTEE IS GIVEN THAT ALL EXISTING UTILITIES ARE SHOWN OR THAT THE GIVEN LOCATIONS ARE EXACT. CONFIRMATION OF EXISTENCE AND EXACT LOCATION OF ALL SERVICES MUST BE OBTAINED FROM THE INDIVIDUAL UTILITIES BEFORE PROCEEDING WITH CONSTRUCTION.

NO.	REVISIONS	DATE	BY
1	FEEDER MAIN COUPLING	07/11/88	S.K.B.
2	PREVIOUSLY DWG. NO. FM4	16.9.8	R.M.A.

DILLON
 Consulting Engineers - Planners
 Environmental Scientists

DESIGNED BY: A.G.
 CHECKED BY: D.P.K.
 DRAWN BY: D.M.W.
 APPROVED BY: [Signature]

HOR. SCALE: 1:20
 VERTICAL: [Blank]

DATE: JULY, 1988

ENGINEER'S SEAL
 25/6/88
 [Signature]

CONSULTANT DRAWING NO.
 M-88-H-2

THE CITY OF WINNIPEG
 WORKS AND OPERATIONS DIVISION
 STREETS AND TRANSPORTATION DEPARTMENT

KILDONAN CORRIDOR
 N.K. FEEDERMAIN RELOCATION
 VALVE PIT - STA. 1+14.073
 CONCRETE AND REINFORCING

CITY DRAWING NUMBER: B216-88-FM3
 SHEET 3 OF 4
 D-1258 A

OFFICE FILE COPY
 DO NOT REMOVE FROM OFFICE AREA

[Signature] DRAWING
 15/12/89