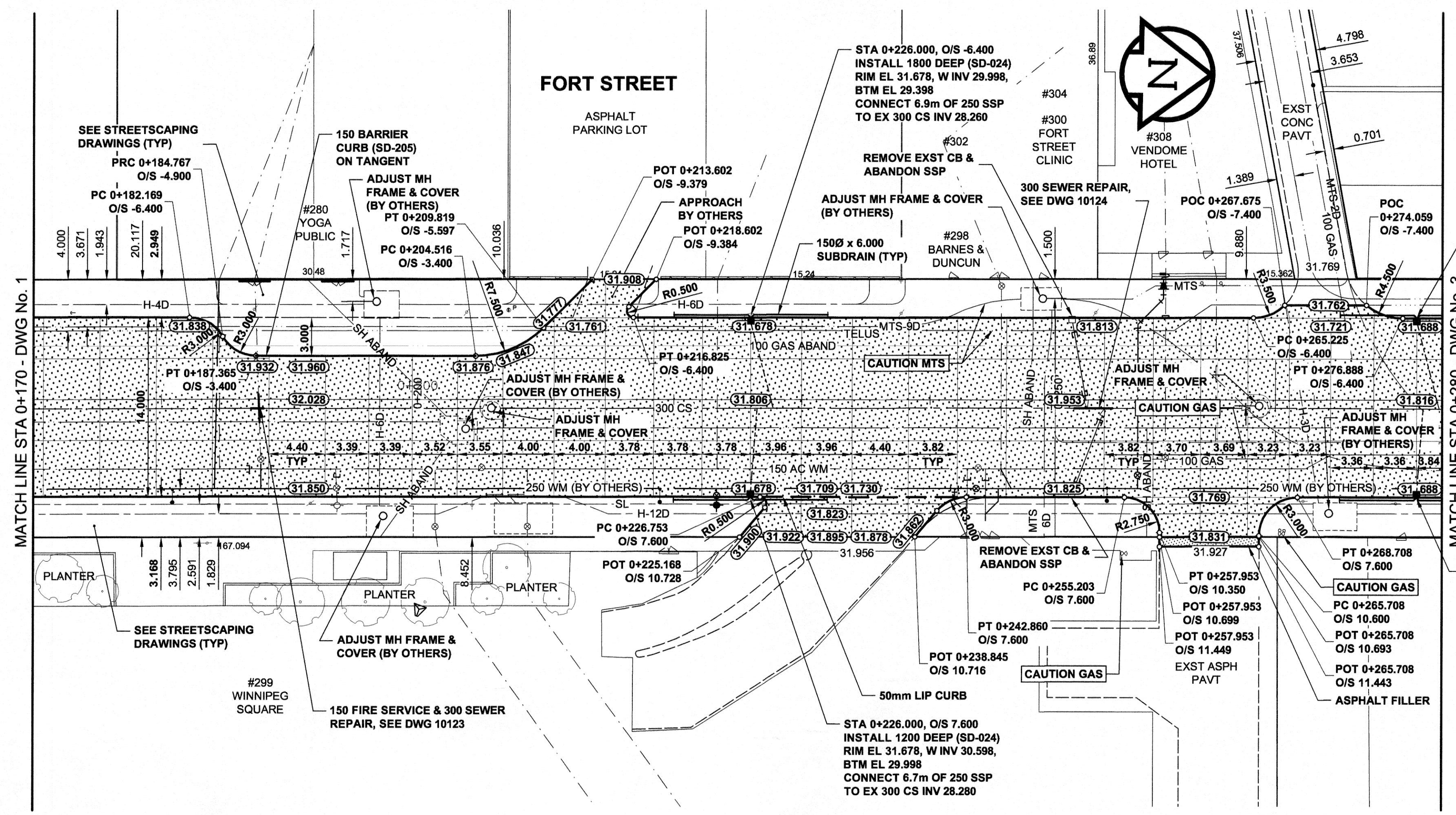
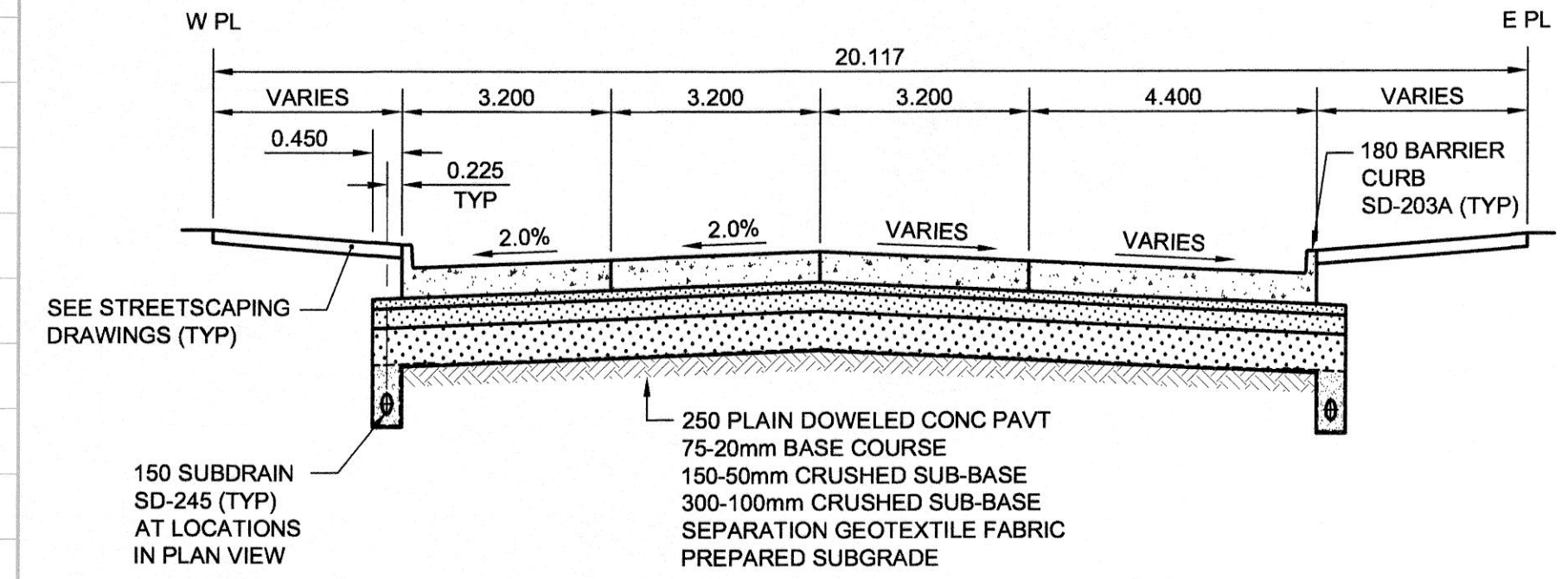
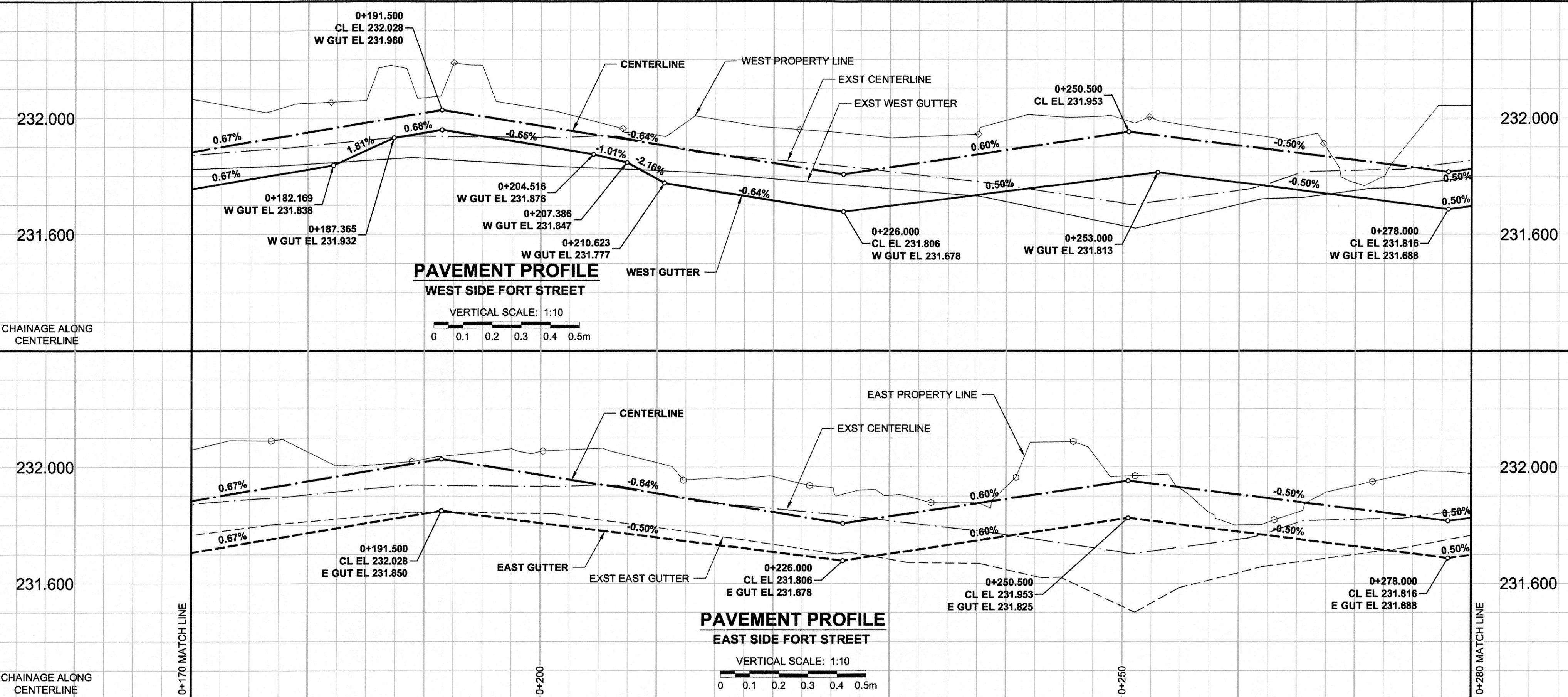


A1 SIZE 594mm x 841mm



**SSP CONNECTION DATA**

REFERENCE	JCT LOCATION
MH @ 0+205.762	0
E/CB @ 0+226.000	20.738
W/CB @ 0+226.000	21.988

**SSP CONNECTION DATA**

REFERENCE	JCT LOCATION
MH @ 0+265.701	0
E/CB @ 0+278.000	12.801
W/CB @ 0+278.000	14.051

- NOTES**
- ADJUST MH AND CB RIMS TO NEW GRADES.
  - LAMP STANDARDS, HYDRO POLES, AND ANCHORS THAT REQUIRE TEMPORARY SUPPORT, REMOVAL OR REPLACEMENT TO BE DONE SO AT THE EXPENSE OF THE CONTRACTOR.
  - SEE STREETSCAPING DRAWINGS FOR SIDEWALK RAMP CURB & DETECTABLE WARNING SURFACE LOCATIONS.
  - CONTRACTOR SHALL TAKE PRECAUTIONARY STEPS TO PROTECT EXISTING TREES WITHIN THE LIMITS OF CONSTRUCTION FROM DAMAGE FROM CONSTRUCTION ACTIVITIES AS OUTLINED IN THE SPECIFICATIONS.
  - MODIFIED BARRIER CURB TO BE USED AT ALL INTERSECTION RADI, BACK LANE RADI AND BULLNOSES.
  - CONTRACTOR SHALL CONFIRM THE LOCATION OF ALL UTILITIES/SERVICES IN THE FIELD PRIOR TO CONSTRUCTION.
  - 250 WM BEING REPLACED PRIOR TO PAVEMENT CONSTRUCTION BY OTHERS. HYDRANT LOCATIONS MAY VARY FROM SHOWN.
  - ADD 200.000m TO ABBREVIATED ELEVATIONS TO OBTAIN GEODETIC ELEVATIONS.

FILE NAME: W12400700-T-002\_RX.dwg Saved By: Diane

**METRIC**  
WHOLE NUMBERS INDICATE MILLIMETRES  
DECIMALIZED NUMBERS INDICATE METRES

EXISTING	LEGEND - PLAN	NEW	EXISTING	LEGEND - PLAN	NEW	EXISTING	LEGEND - PLAN	NEW
○	GAS	○	MANHOLE	●	CONCRETE PAVEMENT	□	LOCATION APPROVED	□
○	MTS	□	CATCH BASIN / CATCH PIT	■	CONC SIDEWALK / MEDIAN	□	UNDERGROUND STRUCTURES	□
○	HYDRO	□	CURB INLET WITH BOX	■	ASPHALT PAVEMENT	□	SUPR. U/G STRUCTURES	□
○	CATV / FIBRE OPTIC	○	TREE	○	PAVING STONE	□	DATE	□
○	TRAFFIC SIGNALS / PIT	○	TEST HOLE	○	GRAVEL	□	COMMITTEE	□
○	LAND DRAINAGE SEWER	○	PROPERTY LINE	○	RAMP CURB	□	NOTE:	□
○	SANITARY/COMBINED SEWER	○	SURVEY BAR	○	PLANING / REMOVAL	□	LOCATION OF UNDERGROUND STRUCTURES	□
○	SSP/DCP	○	FENCE	○		□	AS SHOWN ARE BASED ON THE BEST	□
○	WATERMAIN	○	BOC / EDGE OF PAVEMENT	○		□	INFORMATION AVAILABLE. BUT NO	□
○	SUBDRAIN	○	ELEVATION	○		□	GUARANTEE IS GIVEN THAT ALL EXISTING	□
○	DITCH	○	TRAFFIC SIGN	○		□	UTILITIES ARE SHOWN OR THAT THE GIVEN	□
○		○		○		□	LOCATIONS ARE EXACT. CONFIRMATION OF	□
○		○		○		□	EXISTENCE AND EXACT LOCATION OF ALL	□
○		○		○		□	SERVICES MUST BE OBTAINED FROM THE	□
○		○		○		□	INDIVIDUAL UTILITIES BEFORE PROCEEDING	□
○		○		○		□	WITH CONSTRUCTION.	□

BM GBM No. 35-050  
ELEV 232.149m

No.	ISSUED FOR CONSTRUCTION	DATE	BY
0	12/06/19	12/03/30	RPB

**MORRISON HERSHFELD**

DESIGNED BY	WRJ	CHECKED BY	RPB
DRAWN BY	DID/DML	APPROVED BY	BWB
HOR. SCALE	1:250	RELEASED FOR CONSTRUCTION	
VERT. SCALE	1:10	DATE	June 19/12

PROFESSIONAL'S SEAL  
JANE ALICE R.P. BRUCE  
REGISTERED PROFESSIONAL ENGINEER  
CONSULTANT DRAWING No. W12400700-T-002\_RX.dwg

**THE CITY OF WINNIPEG**  
PUBLIC WORKS DEPARTMENT  
ENGINEERING DIVISION

**2012 REGIONAL & LOCAL STREETS PROGRAM**  
FORT ST RECONSTRUCTION & STREETSCAPING  
GRAHAM AVENUE TO PORTAGE AVENUE

HORIZONTAL AND VERTICAL ALIGNMENT  
STA 0+170 TO STA 0+280

CITY DRAWING NUMBER P-3335-2  
SHEET 2 OF 7  
DRAWING No. 2  
REV 0

BID OPPORTUNITY No. 250-2012