

REFERENCE NOTES

- A. PAVEMENT DIMENSIONS ARE TO BACK OF CURB
- B. BASELINE IS CENTRE LINE RIGHT-OF-WAY
- C. PROPERTY LINES OBTAINED FROM CITY OF WINNIPEG L.B.I.S., AND NO SCALE FACTOR WAS APPLIED
- D. REFER TO AECOM FIELD BOOK NO. 4739

CONSTRUCTION NOTES

1. REMOVE EXISTING CONCRETE PAVEMENT AND CONSTRUCT NEW 100mm ASPHALTIC PAVEMENT (TYPE 1A)
2. RENEW EXISTING 100mm CONCRETE SIDEWALK
3. INSTALL NEW 100mm CONCRETE SIDEWALK
4. CONSTRUCT NEW BARRIER CURB AND GUTTER (180mm HT.)
5. CONSTRUCT NEW MODIFIED BARRIER CURB AND GUTTER (180mm HT.)
6. CONSTRUCT NEW CURB RAMP AND GUTTER (10mm HT. INTEGRAL)
7. INSTALL NEW CURB AND GUTTER INLET c/w CATCH BASIN (SD-024) AND CONNECT NEW 250mm LEAD TO EXISTING 450 CONC CS
8. REMOVE EXISTING CURB INLET AND CATCH BASIN
9. REMOVE EXISTING CURB INLET AND CATCH BASIN AND ABANDON EXISTING LEAD
10. REMOVE AND INSTALL EXISTING PAVING STONES
11. INSTALL 150mm SUBDRAIN
12. ADJUST EXISTING MANHOLE TO GRADE
13. INSTALL NEW CAST IRON RISER RING
14. ADJUST EXISTING WATER VALVE TO GRADE
15. ADJUST EXISTING CURB STOP



METRIC
WHOLE NUMBERS INDICATE MILLIMETRES
DECIMALIZED NUMBERS INDICATE METRES

EXISTING	LEGEND - PLAN	PROPOSED	EXISTING	LEGEND - PLAN	PROPOSED	EXISTING	LEGEND - PROFILE	PROPOSED
150 mm W.M.	WATERMAIN	150 mm W.M.	HYDRO	M.T.S.	---	---	C PROFILE	---
300mm L.D.S.	LAND DRAINAGE SEWER	300mm L.D.S.	CONCRETE	ASPHALT	---	---	NORTH/WEST GUTTER	---
250mm W.W.S.	WASTEWATER SEWER	250mm W.W.S.	PROPERTY LINE	SURVEY BAR	---	---	SOUTH/EAST GUTTER	---
○	MANHOLE	●	ELEVATION	(35.750)	---	---	N/W PROPERTY LINE	---
□	CATCH BASIN	■	TREE	SIDEWALK RAMP	---	---	S/E PROPERTY LINE	---
▽	CURB INLET	▽	CONCRETE SIDEWALK	FENCE	---	---		
---	JUNCTIONS	---	LEGEND - PLAN	PROPOSED	---	---		
---	CULVERT	---						
---	GAS	---						

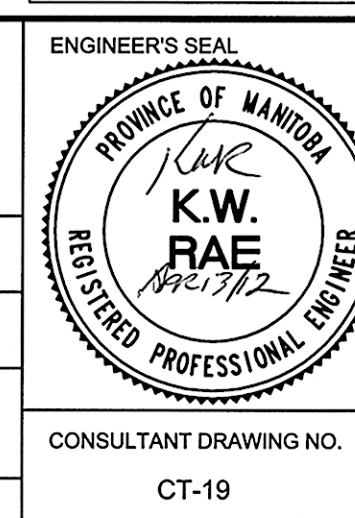
LOCATION APPROVED UNDERGROUND STRUCTURES

SUPV. U/G STRUCTURES COMMITTEE DATE

NOTE:
LOCATION OF UNDERGROUND STRUCTURES AS SHOWN ARE BASED ON THE BEST INFORMATION AVAILABLE. BUT NO GUARANTEE IS GIVEN THAT ALL EXISTING UTILITIES ARE SHOWN OR THAT THE GIVEN LOCATIONS ARE EXACT. CONFIRMATION OF EXISTENCE AND EXACT LOCATION OF ALL SERVICES MUST BE OBTAINED FROM THE INDIVIDUAL UTILITIES BEFORE PROCEEDING WITH CONSTRUCTION.

NO.	REVISIONS	DATE	BY
0	ISSUED FOR TENDER	04/13/2012	BC
A	ISSUED FOR REVIEW	03/28/2012	BC

DESIGNED BY	BC	CHECKED BY	KWR
DRAWN BY	SS	APPROVED BY	
HOR. SCALE:	1:250	RELEASED FOR CONSTRUCTION BY:	*
VERTICAL:	1:10	DATE	April 13/12



THE CITY OF WINNIPEG
PUBLIC WORKS DEPARTMENT
ENGINEERING DIVISION

2012 LOCAL STREET RENEWAL PROGRAM

WAVELL AVE. - CASEY STREET TO FISHER STREET
PAVEMENT RECONSTRUCTION
STATION 0+190 TO FISHER STREET

CITY DRAWING NUMBER
SHEET 19 OF 19

CONSULTANT DRAWING NO.
CT-19