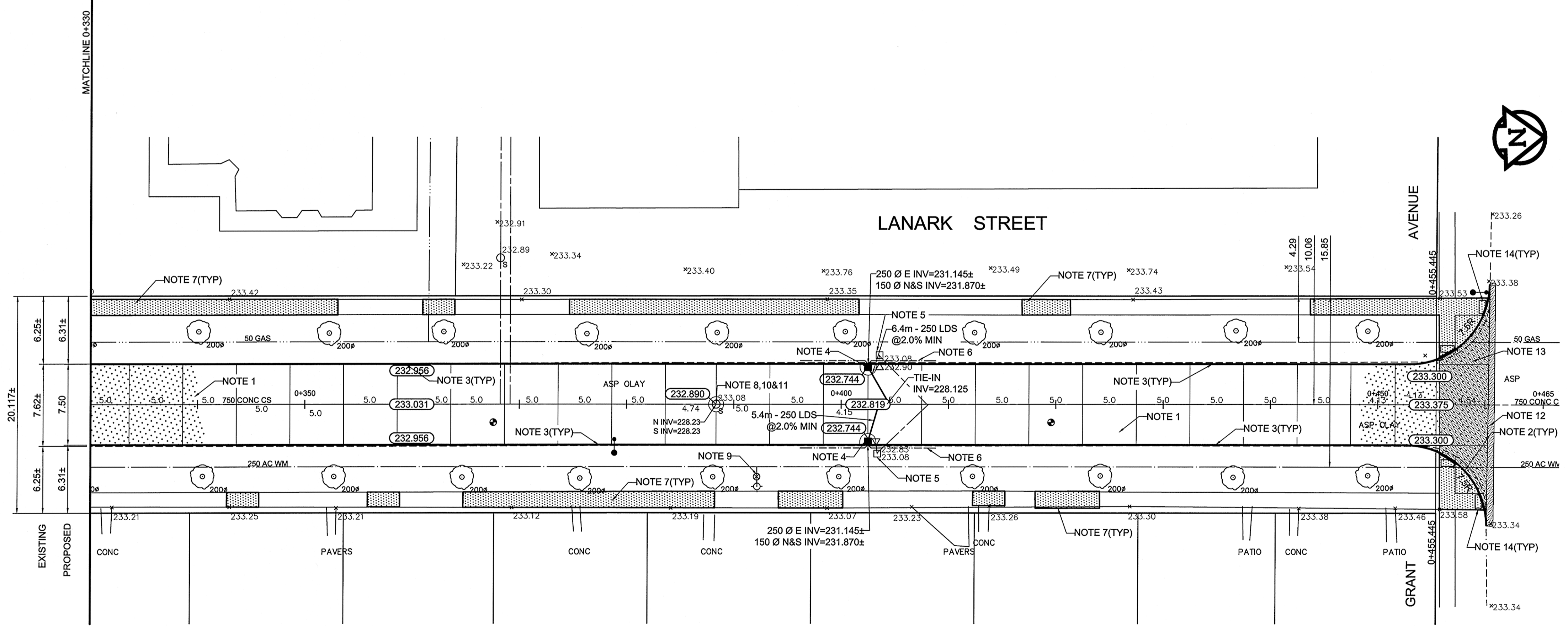


TYPICAL CROSS SECTION



REFERENCE NOTES

- A. PAVEMENT DIMENSIONS ARE TO BACK OF CURB
- B. BASELINE IS CENTRE LINE RIGHT-OF-WAY
- C. PROPERTY LINES OBTAINED FROM CITY OF WINNIPEG L.B.I.S., AND NO SCALE FACTOR WAS APPLIED
- D. REFER TO AECOM FIELD BOOK NO. 4740

CONSTRUCTION NOTES

1. REMOVE EXISTING CONCRETE PAVEMENT AND CONSTRUCT NEW 150mm REINFORCED CONCRETE PAVEMENT
2. CONSTRUCT NEW MODIFIED BARRIER CURB (180mm HT, INTEGRAL)
3. CONSTRUCT NEW BARRIER CURB (180mm HT, SEPARATE)
4. INSTALL NEW CURB AND GUTTER INLET c/w CATCH BASIN (SD-024) AND CONNECT NEW 250mm LEAD TO EXISTING 450mm COMBINED SEWER
5. REMOVE EXISTING CATCHBASIN AND INLET AND PLUG EXISTING LEAD
6. INSTALL 150mm SUBDRAIN
7. RENEW EXISTING 100mm CONCRETE SIDEWALK
8. ADJUST EXISTING MANHOLE TO GRADE
9. ADJUST EXISTING WATER VALVE TO GRADE
10. REMOVE EXISTING FRAME AND COVER AND PLACE NEW FRAME AND COVER (AP-004/AP-005)
11. INSTALL NEW CAST IRON RISER RING
12. REMOVE EXISTING ASPHALT PAVEMENT AND PLACE NEW ASPHALT PAVEMENT
13. CONSTRUCT NEW 150mm REINFORCED CONCRETE PAVEMENT c/w 50mm TYPE 1A ASPHALT PAVEMENT
14. INSTALL NEW DETECTABLE SURFACE WARNING TILES



METRIC
WHOLE NUMBERS INDICATE MILLIMETRES
DECIMALIZED NUMBERS INDICATE METRES

EXISTING	LEGEND - PLAN	PROPOSED	EXISTING	LEGEND - PLAN	PROPOSED	EXISTING	LEGEND - PROFILE	PROPOSED
150mm W.M.	WATERMAIN	150mm W.M.	HYDRO	M.T.S.	—X—	C PROFILE	NORTH/WEST GUTTER	---
300mm L.D.S.	VALVE	300mm L.D.S.	CONCRETE	ASPHALT	---	SOUTH/EAST GUTTER	---	---
250mm W.W.S.	LAND DRAINAGE SEWER	250mm W.W.S.	PROPERTY LINE	SURVEY BAR	---	N/W PROPERTY LINE	---	---
250mm W.W.S.	WASTEWATER SEWER	250mm W.W.S.	ELEVATION	(35.750)	---	S/E PROPERTY LINE	---	---
○	MANHOLE	○	TREE	---	---	---	---	---
□	CATCH BASIN	□	SIDEWALK RAMP	---	---	---	---	---
▽	CURB INLET	▽	CONCRETE SIDEWALK	---	---	---	---	---
---	JUNCTIONS	---	FENCE	---	---	---	---	---
---	CULVERT	---	---	---	---	---	---	---
---	GAS	---	---	---	---	---	---	---

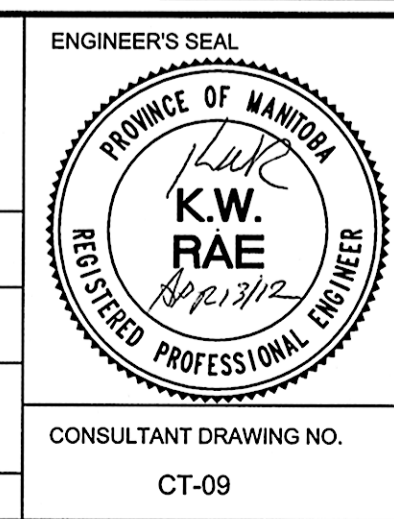
LOCATION APPROVED UNDERGROUND STRUCTURES

SUPV. U/G STRUCTURES COMMITTEE DATE

NOTE:
LOCATION OF UNDERGROUND STRUCTURES AS SHOWN ARE BASED ON THE BEST INFORMATION AVAILABLE. BUT NO GUARANTEE IS GIVEN THAT ALL EXISTING UTILITIES ARE SHOWN OR THAT THE GIVEN LOCATIONS ARE EXACT. CONFIRMATION OF EXISTENCE AND EXACT LOCATION OF ALL SERVICES MUST BE OBTAINED FROM THE INDIVIDUAL UTILITIES BEFORE PROCEEDING WITH CONSTRUCTION.

B.M. 51-012	N.W. Cor. Grant Ave. & Lanark St. 731.15 S. Conc. Intersection of John Dalpe School, No. 1777 Grant Ave. 1.5m W. of E. Cor. & 0.2 m below top of foundation of school.		
ELEV. 233.942			
0	ISSUED FOR TENDER	04/13/2012	BC
A	ISSUED FOR REVIEW	03/28/2012	BC
NO.	REVISIONS	DATE	BY

AECOM	
DESIGNED BY: BC	CHECKED BY: KWR
DRAWN BY: MS	APPROVED BY:
HOR. SCALE: 1:250	RELEASED FOR CONSTRUCTION BY:
VERTICAL: 1:10	DATE: April 13/12



ENGINEERS SEAL

PROVINCE OF MANITOBA
K.W. RAE
REGISTERED PROFESSIONAL ENGINEER

CONSULTANT DRAWING NO. CT-09

THE CITY OF WINNIPEG
PUBLIC WORKS DEPARTMENT
ENGINEERING DIVISION

2012 LOCAL STREET RENEWAL PROGRAM

LANARK STREET - MATHERS AVE. TO GRANT AVE.
PAVEMENT RECONSTRUCTION
STATION 0+330 TO GRANT AVENUE

CITY DRAWING NUMBER
SHEET 9 OF 19