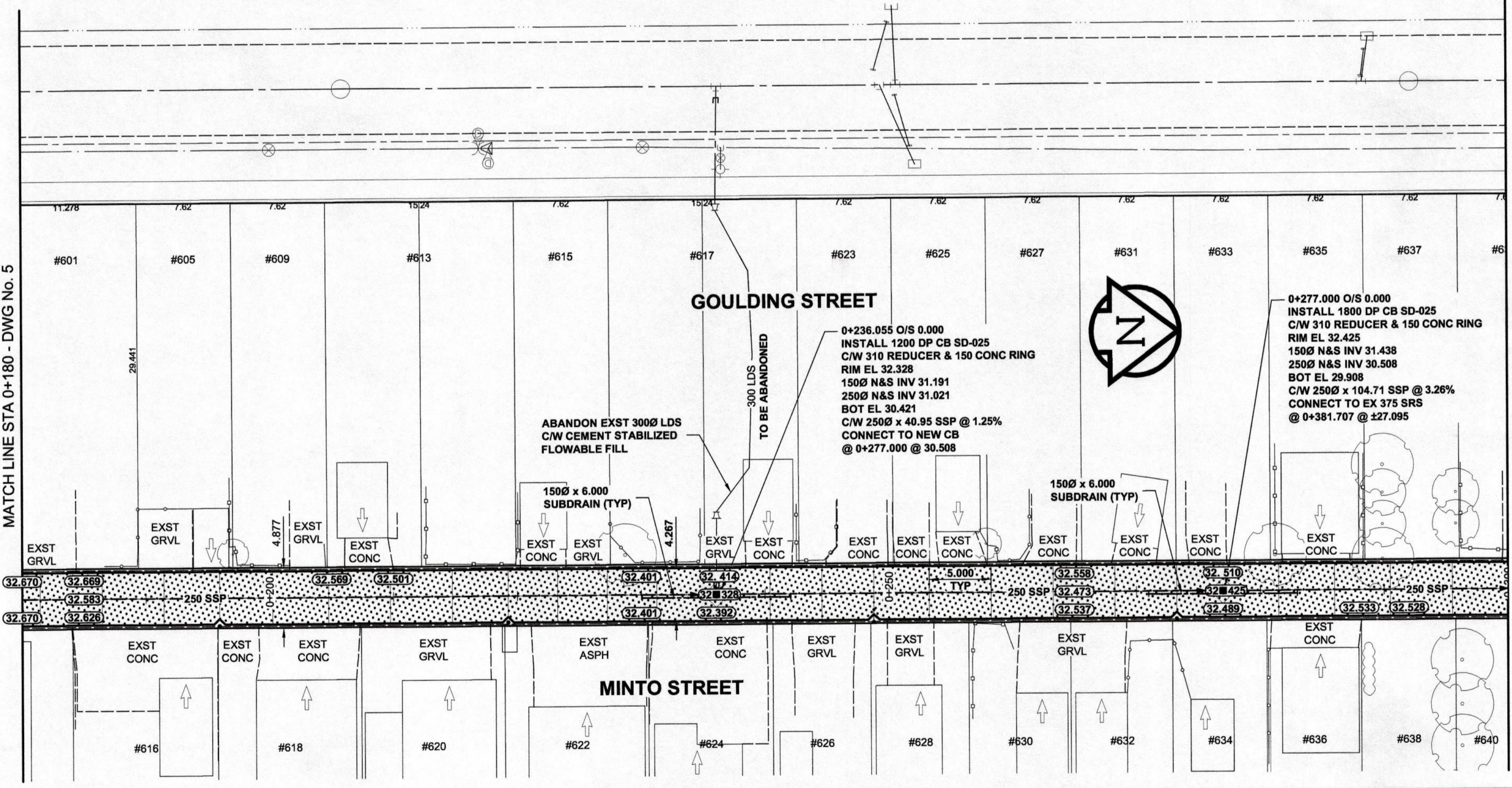
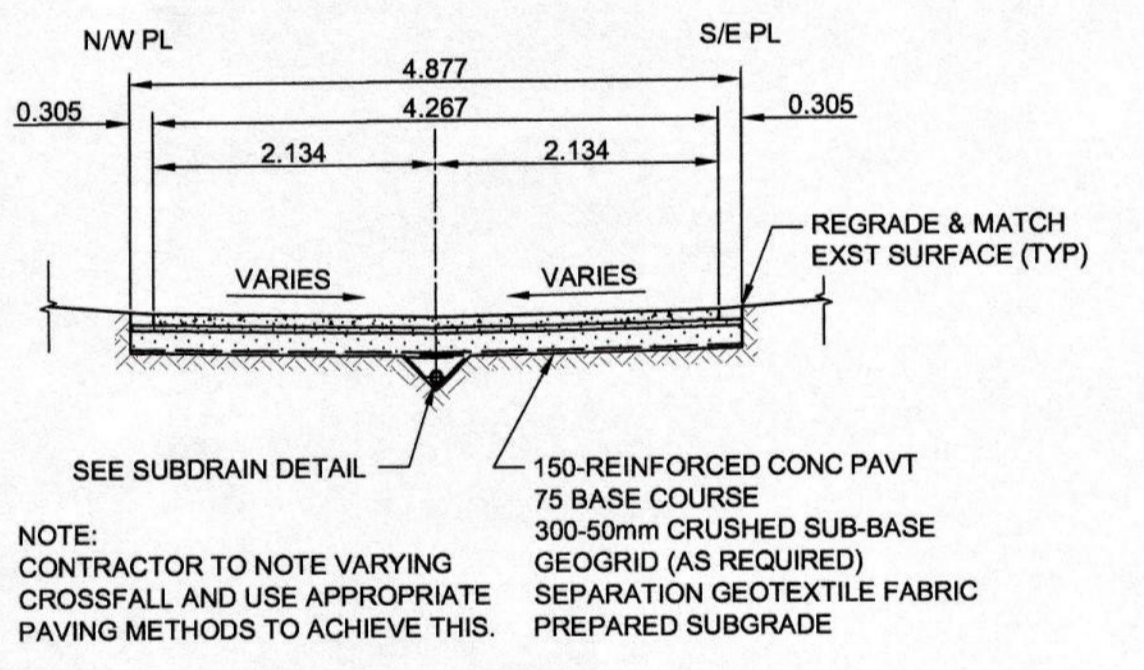
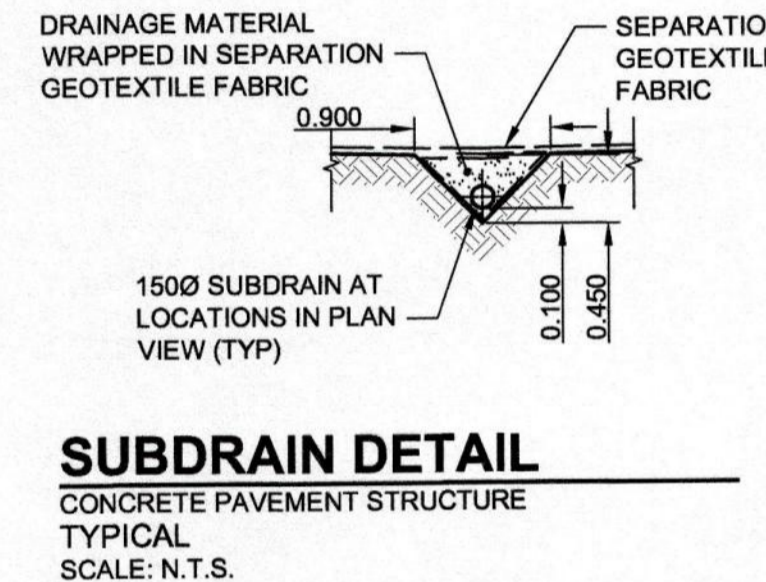
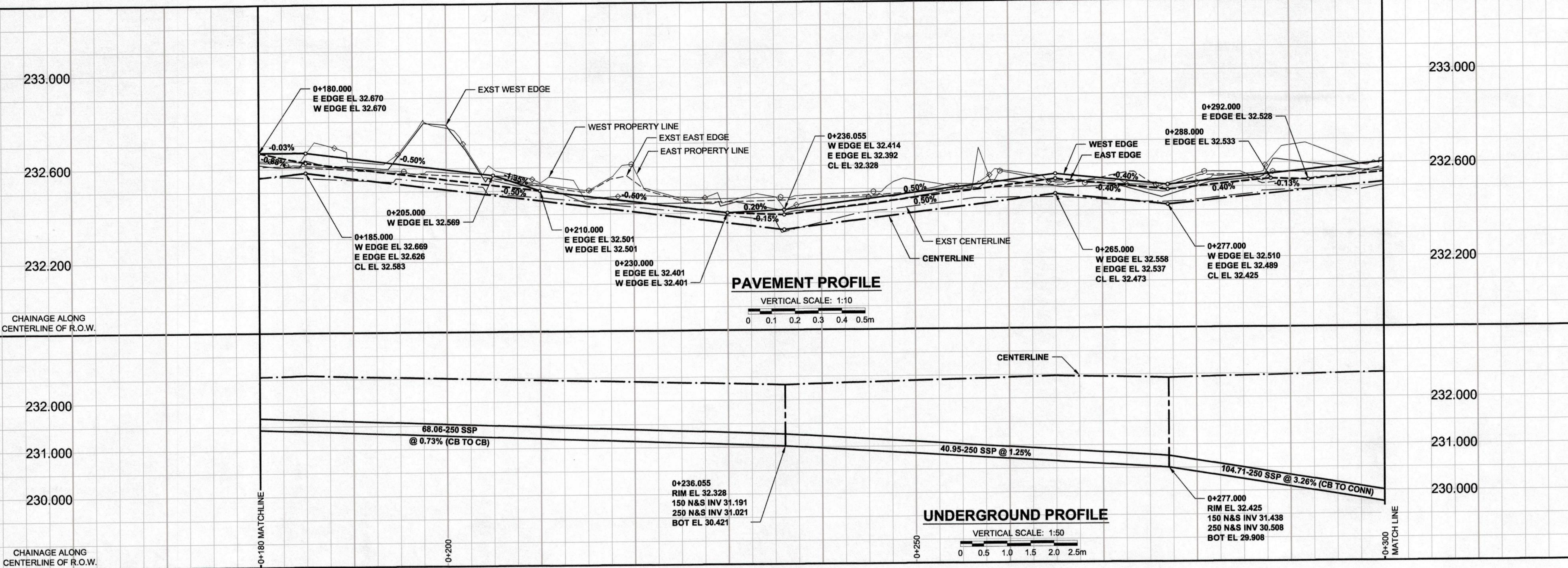


A1 SIZE 594mm x 841mm  
PLOT: 4/24/2012 3:13:10 PM  
FILE NAME: W11401400-T-006\_R0.dwg Saved By: diane



**METRIC**  
WHOLE NUMBERS INDICATE MILLIMETRES  
DECIMALIZED NUMBERS INDICATE METRES

EXISTING	LEGEND - PLAN	NEW	EXISTING	LEGEND - PLAN	NEW	EXISTING	LEGEND - PLAN	NEW
○	MANHOLE	●	CONCRETE PAVEMENT	■	LOCATION APPROVED UNDERGROUND STRUCTURES	□	CATCH BASIN / CATCH PIT	▲
□	CATCH BASIN / CATCH PIT	■	CONC SIDEWALK / MEDIAN	▲	ASPHALT PAVEMENT	○	CURB INLET WITH BOX	▲
△	TREE	▲	PAVING STONE	▲	GRAVEL	△	TEST HOLE	▲
△	PROPERTY LINE	▲	RAMP CURB	▲	PLANING / REMOVAL	△	PROPERTY LINE	▲
△	SURVEY BAR	▲	FENCE	▲	BOC / EDGE OF PAVEMENT ELEVATION	△	FENCE	▲
△	BOC / EDGE OF PAVEMENT	▲	TRAFFIC SIGN	▲		△	BOC / EDGE OF PAVEMENT ELEVATION	▲
△	TRAFFIC SIGN	▲		▲		△	TRAFFIC SIGN	▲

**LOCATION APPROVED UNDERGROUND STRUCTURES**

DATE: \_\_\_\_\_

NOTE: LOCATION OF UNDERGROUND STRUCTURES AS SHOWN ARE BASED ON THE BEST INFORMATION AVAILABLE. BUT NO GUARANTEE IS GIVEN THAT ALL EXISTING UTILITIES ARE SHOWN OR THAT THE GIVEN LOCATIONS ARE EXACT. CONFIRMATION OF EXISTENCE AND EXACT LOCATION OF ALL SERVICES MUST BE OBTAINED FROM THE INDIVIDUAL UTILITIES BEFORE PROCEEDING WITH CONSTRUCTION.

No.	ISSUED FOR	DATE	BY
1	ISSUED FOR ADDENDUM 1	12/04/19	JGK
0	ISSUED FOR CONSTRUCTION	12/04/19	JGK
	REVISIONS	YYMMDD	BY

**MORRISON HERSHFIELD**

DESIGNED BY: JGK  
CHECKED BY: RPB  
DRAWN BY: DID/DML  
APPROVED BY: BWB

HOR. SCALE: 1:250  
VERT. SCALE: AS SHOWN

DATE: 12/04/19

PROFESSIONAL'S SEAL

PROVINCE OF MANITOBA  
REGISTERED PROFESSIONAL ENGINEER

J.G. KENNEDY  
Member  
22328  
R.P.K. 2/12

CONSULTANT DRAWING No.  
W11401400-T-006\_R0.dwg

**THE CITY OF WINNIPEG**  
PUBLIC WORKS DEPARTMENT  
ENGINEERING DIVISION

**2012 REGIONAL & LOCAL STREET ALLEY PACKAGE**  
GOULDING STREET-MINTO STREET ALLEY  
BETWEEN PORTAGE AVENUE & WOLEVER AVENUE  
HORIZONTAL AND VERTICAL ALIGNMENT

STA 0+180 TO STA 0+300

CITY DRAWING NUMBER: N/A  
SHEET: 6 OF 17  
DRAWING No.: 6  
REV: 1

BID OPPORTUNITY No. 239-2012