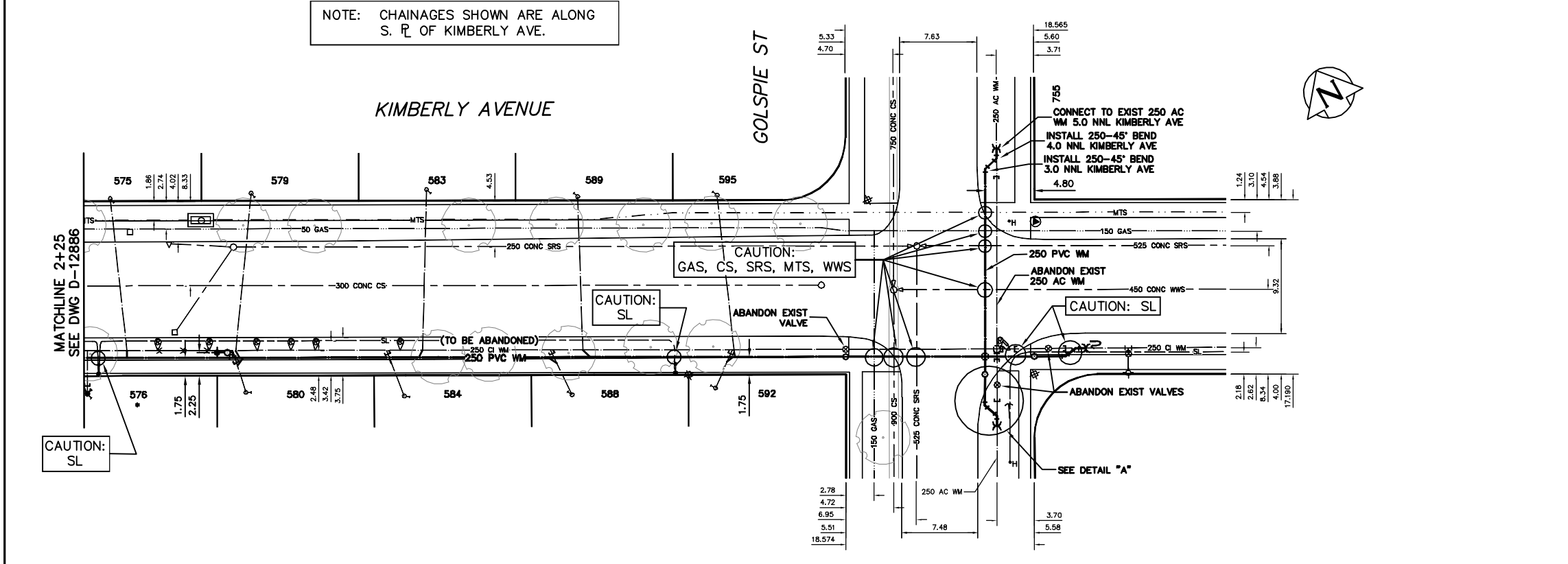


NOTE: CHAINAGES SHOWN ARE ALONG S. R. OF KIMBERLY AVE.

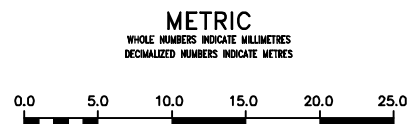


WATER SERVICE INFORMATION

| ADDRESS | SIZE (mm) MATERIAL (STREET) | SIZE (mm) MATERIAL (PROP.) | SHORT & LONG MEASUREMENT | CORP. LOCATION | REMARKS |
|------------------------------|-----------------------------|----------------------------|--------------------------|----------------|---------|
| 575 KIMBERLY AVE RESIDENTIAL | 20 COPPER | 20 COPPER | 3.84 E OF W HL | 1.6 E OF SC | -- |
| 576 KIMBERLY AVE RESIDENTIAL | 20 COPPER | 20 COPPER | 71.26 WML KIMBERLY | OPP OF SC | -- |
| 578 KIMBERLY AVE RESIDENTIAL | 20 COPPER | 20 COPPER | 1.19 E OF W HL | OPP OF SC | -- |
| 579 KIMBERLY AVE RESIDENTIAL | 20 COPPER | 20 COPPER | 73.39 WML KIMBERLY | 1.5 W OF SC | -- |
| 580 KIMBERLY AVE RESIDENTIAL | 20 COPPER | 20 COPPER | 2.86 E OF W HL | 2.5 W OF SC | -- |
| 581 KIMBERLY AVE RESIDENTIAL | 20 COPPER | 20 COPPER | 57.63 WML KIMBERLY | 2.5 W OF SC | -- |
| 582 KIMBERLY AVE RESIDENTIAL | 20 COPPER | 20 COPPER | 1.49 E OF W HL | 2.5 W OF SC | -- |
| 583 KIMBERLY AVE RESIDENTIAL | 20 COPPER | 20 COPPER | 5.20 E OF W HL | 0.3 W OF SC | -- |
| 584 KIMBERLY AVE RESIDENTIAL | 20 COPPER | 20 COPPER | 40.60 WML KIMBERLY | 1.7 W OF SC | -- |
| 584 KIMBERLY AVE RESIDENTIAL | 20 COPPER | 20 COPPER | 1.70 E OF W HL | 2.1 W OF SC | -- |
| 588 KIMBERLY AVE RESIDENTIAL | 20 COPPER | 20 COPPER | 42.81 WML KIMBERLY | 2.1 W OF SC | -- |
| 589 KIMBERLY AVE RESIDENTIAL | 20 COPPER | 20 COPPER | 2.25 E OF W HL | 0.5 E OF SC | -- |
| 589 KIMBERLY AVE RESIDENTIAL | 20 COPPER | 20 COPPER | 26.57 WML KIMBERLY | 0.5 E OF SC | -- |
| 592 KIMBERLY AVE RESIDENTIAL | 20 COPPER | 20 COPPER | 4.20 E OF W HL | 2.1 W OF SC | -- |
| 592 KIMBERLY AVE RESIDENTIAL | 20 COPPER | 20 COPPER | 26.02 WML KIMBERLY | 2.1 W OF SC | -- |
| 595 KIMBERLY AVE RESIDENTIAL | 20 COPPER | 20 COPPER | 0.33 E OF W HL | 1.7 W OF SC | -- |
| 595 KIMBERLY AVE RESIDENTIAL | 20 COPPER | 20 COPPER | 12.70 WML KIMBERLY | 1.7 W OF SC | -- |
| 595 KIMBERLY AVE RESIDENTIAL | 20 COPPER | 20 COPPER | 2.96 E OF W HL | 1.7 W OF SC | -- |
| 595 KIMBERLY AVE RESIDENTIAL | 20 COPPER | 20 COPPER | 12.53 WML KIMBERLY | 1.7 W OF SC | -- |

* SERVICES TO BE RENEWED TO R. ALL OTHERS TO BE RECONNECTED

VALVES TO BE COUNTERCLOCKWISE TO CLOSE (RED OPERATING NUT)



WARNING
IF POWER EQUIPMENT OR EXPLOSIVES ARE TO BE USED FOR EXCAVATION ON THIS PROJECT THE CONTRACTOR MUST:
1) NOTIFY THE GAS COMPANY OF THE PROPOSED LOCATION OF EXCAVATION.
2) TAKE PRECAUTION TO AVOID DAMAGE TO GAS COMPANY INSTALLATIONS.
SEE PROVINCIAL REGULATION 21072 FOR DETAILS

LOCATION APPROVED UNDERGROUND STRUCTURES
SUPV. U/G STRUCTURES COMMITTEE DATE
NOTE:
LOCATION OF UNDERGROUND STRUCTURES AS SHOWN ARE BASED ON THE BEST INFORMATION AVAILABLE BUT NO GUARANTEE IS GIVEN THAT ALL EXISTING UTILITIES ARE SHOWN OR THAT THE GIVEN LOCATIONS ARE EXACT. CONFIRMATION OF EXISTENCE AND EXACT LOCATION OF ALL SERVICES MUST BE OBTAINED FROM THE INDIVIDUAL UTILITIES BEFORE PROCEEDING WITH CONSTRUCTION.

| NO. | REVISIONS | DATE | BY |
|-----|-----------|------|----|
| | | | |
| | | | |

| | | | |
|-------------|---------------------------|-------------|----|
| DESIGNED BY | NC | CHECKED BY | SC |
| DRAWN BY | CJH | APPROVED BY | KZ |
| SCALE: | RELEASED FOR CONSTRUCTION | | |
| HORIZONTAL | 1:250 | | |
| VERTICAL | 1:50 | | |
| DATE | 2012 03 27 | | |
| DATE | MARCH 28, 2012 | | |
| PLOT DATE: | 2012 03 28 | | |

ENGINEER'S SEAL
ORIGINAL SIGNED BY S.R.J. COURNOYER 12-03-27
CONSULTANT DRAWING NUMBER

THE CITY OF WINNIPEG
WATER AND WASTE DEPARTMENT
ENGINEERING DIVISION
2012 WATERMAIN RENEWALS
KIMBERLY AVENUE
75 W OF GOLSPIE STREET TO GOLSPIE STREET
SHEET 12 OF 14
CITY DRAWING NUMBER D-12887