

- CONSTRUCTION NOTES**
- 1) CURB REPLACEMENT AS DIRECTED BY THE CONTRACT ADMINISTRATOR
 - 2) PAVEMENT REPAIRS SHOWN ARE ONLY A REPRESENTATIVE SAMPLE OF THE TENDERED QUANTITIES
 - 3) ASPHALT TIE-INS ON APPROACHES TO BE DETERMINED IN THE FIELD BY THE CONTRACT ADMINISTRATOR.
 - 4) ADJUST ALL MH AND CB RIMS TO DESIGN ELEVATIONS.
 - 5) ADD 200.00m TO ABBREVIATED ELEVATIONS TO OBTAIN GEODETIC ELEVATIONS.

WARNING

IF POWER EQUIPMENT OR EXPLOSIVES ARE TO BE USED FOR EXCAVATION ON THIS PROJECT THE CONTRACTOR MUST:

- 1) OBTAIN CLEARANCE FROM THE GAS UTILITY PRIOR TO EXCAVATION.
- 2) TAKE PRECAUTION TO AVOID DAMAGE TO GAS UTILITY INSTALLATIONS.

SEE PROVINCIAL REGULATION 210/72 FOR DETAILS

BID OPPORTUNITY NO. 21-2012

⊕	HYDRANT	⊕	---	LDS/WWS	---	---	NORTH GUTTER	---
⊙	VALVE	⊙	---	WATERMAIN	---	---	CENTER LINE	---
⊘	CURB STOP	⊘	---	GAS	---	---	SOUTH GUTTER	---
---	CONCRETE SIDEWALK	---	---	TRAFFIC SIGNALS	---	---		---
○	O.L.S.	●	---	CONCRETE	---	---		---
○	MANHOLE	●	---	CURB RENEWAL	---	---		---
□	CATCH BASIN	■	231.000	ELEVATIONS	231.000	---		---
△	CURB INLET	▲	---	PROPERTY LINE	---	---		---
☆	HYDRO POLE	⊕	---	SURVEY BAR	---	---		---
⊕	TRAFFIC SIGNAL POLE	⊕	---	GEODETIC BENCH MARK	---	---		---
---		---	---	RAMP CURB	---	---		---
---	EXISTING	---	---	LEGEND - PLAN	---	---	LEGEND - PROFILE	---
---	LEGEND - PLAN	---	---	PROPOSED	---	---	PROPOSED	---

LOCATION APPROVED UNDERGROUND STRUCTURES

DATE

NOTE:
LOCATION OF UNDERGROUND STRUCTURES AS SHOWN ARE BASED ON THE BEST INFORMATION AVAILABLE. BUT NO GUARANTEE IS GIVEN THAT ALL EXISTING UTILITIES ARE SHOWN OR THAT THE GIVEN LOCATIONS ARE EXACT. CONFIRMATION OF EXISTENCE AND EXACT LOCATION OF ALL SERVICES MUST BE OBTAINED FROM THE INDIVIDUAL UTILITIES BEFORE PROCEEDING WITH CONSTRUCTION.

B.M. ELEV.	GBM 54-011		
	231.851		
NO.	REVISIONS	DATE	BY

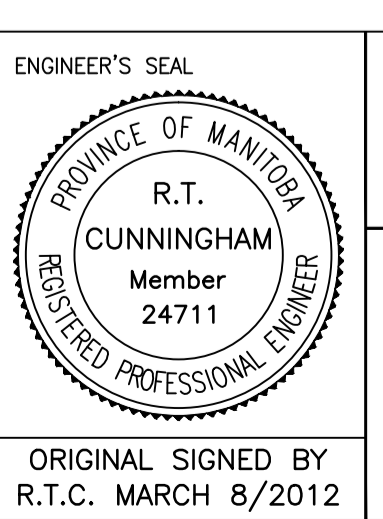
ENGINEERING DIVISION
TECHNOLOGY SERVICES BRANCH
106 - 1155 PACIFIC AVE

DESIGNED BY: R.M.
CHECKED BY: D.T.

DRAWN BY: R.M.
APPROVED BY: R.T.C.

HOR. SCALE: 1 : 250
VERTICAL: 1 : 10

DATE: 2012/03/01



THE CITY OF WINNIPEG
PUBLIC WORKS DEPARTMENT

HULL AVENUE
FROM ST MARY'S ROAD TO ST DAVID ROAD
ASPHALT OVERLAY AND ASSOCIATED WORKS
FROM STA. 2+50 TO STA. 3+50

CITY DRAWING NUMBER SE-12-06
SHEET 2 OF 2

6