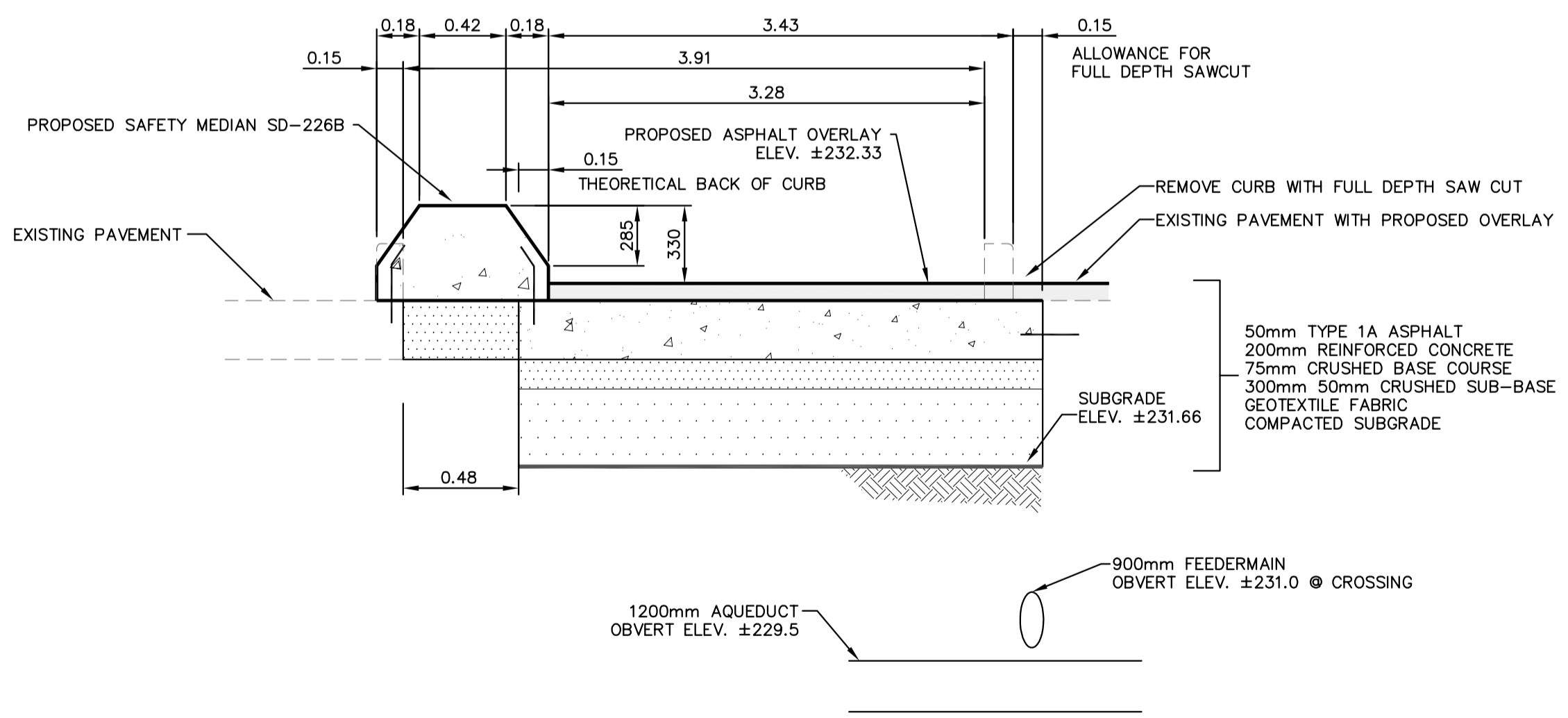


CAUTION: 900 FEEDERMAIN. STATIC COMPACTION WITHIN 10.0m ON EITHER SIDE OF FEEDERMAIN TOP OF MAIN 231.0±

CAUTION: 1200 AQUEDUCT. STATIC COMPACTION WITHIN 10.0m ON EITHER SIDE OF AQUEDUCT TOP OF MAIN 229.5±



SECTION A-A
NTS

METRIC
WHOLE NUMBERS INDICATE MILLIMETRES
DECIMALIZED NUMBERS INDICATE METRES

APEGM
Certificate of Authorization
MMM Group Limited
No. 4531 Date: MARCH 2, 2012

BENCHMARK (B.M.)
ELEVATION = 232.873
TABLET ON NORTH FOUNDATION 245/255 McPHILLIPS ST

EXISTING	LEGEND-PLAN	PROPOSED
150 WM	WATERMAIN	150 WM
300 LDS	LAND DRAINAGE SEWER	300 LDS
250 WWS	WASTE WATER SEWER	250 WWS
⊗	VALVE	⊗
⊕	HYDRANT	⊕
○	MANHOLE	●
□	CATCH BASIN	■
▽	CURB INLET	▼
♂	CURB STOP	♂
---	ROADWAY	---
---	PROPERTY LINE	---
---	GAS	---
---	HYDRO	---
---	M.T.S.	---
⊕	SURVEY BAR	⊕
⊕	HYDRO POLE	⊕
---	CULVERT	---
59.367	GROUND ELEVATION	---
---	ROAD ELEVATION	(00.000)
---	LOT ELEVATION	(00.000)
---	DITCH ELEVATION	(00.000)
---	FLOW DIRECTION	→
---	CONCRETE	---
---	NEW CONCRETE WITH ASPHALT OVERLAY	---

- NOTES:**
- ALL WORK AND MATERIALS TO BE IN ACCORDANCE WITH THE LATEST REVISION OF THE CITY OF WINNIPEG STANDARD CONSTRUCTION SPECIFICATION, UNLESS OTHERWISE NOTED.
 - ALL ROADWAY DIMENSIONS SHOWN ARE TO BACK OF CURB.
 - ADD 200.000 TO OBTAIN ACTUAL GEODETIC ELEVATIONS.
 - CONTRACTOR TO VERIFY DEPTH OF UTILITIES PRIOR TO CONSTRUCTION. LOCATIONS OF UNDERGROUND STRUCTURES AS SHOWN ARE BASED ON THE BEST INFORMATION AVAILABLE, BUT NO GUARANTEE IS GIVEN THAT ALL EXISTING UTILITIES ARE SHOWN OR THAT THE GIVEN LOCATIONS ARE EXACT. CONFORMATION OF EXISTENCE AND EXACT LOCATIONS OF ALL SERVICES MUST BE OBTAINED FROM THE INDIVIDUAL UTILITIES BEFORE PROCEEDING WITH CONSTRUCTION.
 - RESTORE ALL SURFACES TO EQUAL OR BETTER CONDITIONS.

3	ISSUED FOR CONSTRUCTION	21.03.12	MWS
2	GEOMETRY - SAFETY MEDIAN	05.03.12	MWS
1	ISSUED FOR REVIEW	29.02.12	WTJ
NO.	REVISIONS	DATE	BY

CONSULTANTS

MMM GROUP
MMM Group Limited
Suite 111 - 93 Lombard Ave.
Winnipeg, MB R3B 3B1
t.204.943.3178
f.204.943.4948
www.mmm.ca

SEAL

PROVINCE OF MANITOBA
W.T. JACKSON
Member
20782
REGISTERED PROFESSIONAL ENGINEER

PROJECT TITLE

Winnipeg
THE CITY OF WINNIPEG
PUBLIC WORKS DEPARTMENT
ENGINEERING SERVICES DIVISION

SHEET TITLE

2012 MILL AND FILL PROGRAM
McPHILLIPS STREET
SOUTHBOUND TURNING LANE
PACIFIC AVENUE

DRAWN BY	MWS	SCALE	1:250	DRAWING NUMBER	C 01
CHECKED BY	WTJ	DATE	02.03.12		
PROJECT NUMBER	5512002-C-001	REVISION	1		

No. 21_2012 - 8.56m
 P:\5512002 - 5512002 - Mill and Fill Package\MMM Drawings\5512002-C-001_5.03.12.dwg - tab1 Layout1

NOTE:
These design documents are prepared solely for the use by the party with whom the design professional has entered into a contract and there are no representations of any kind made by the design professional to any party with whom the design professional has not entered into a contract.