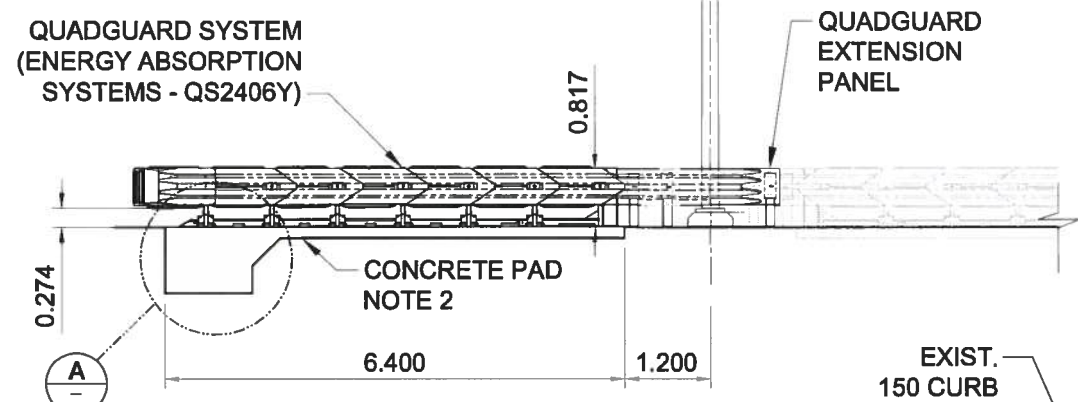


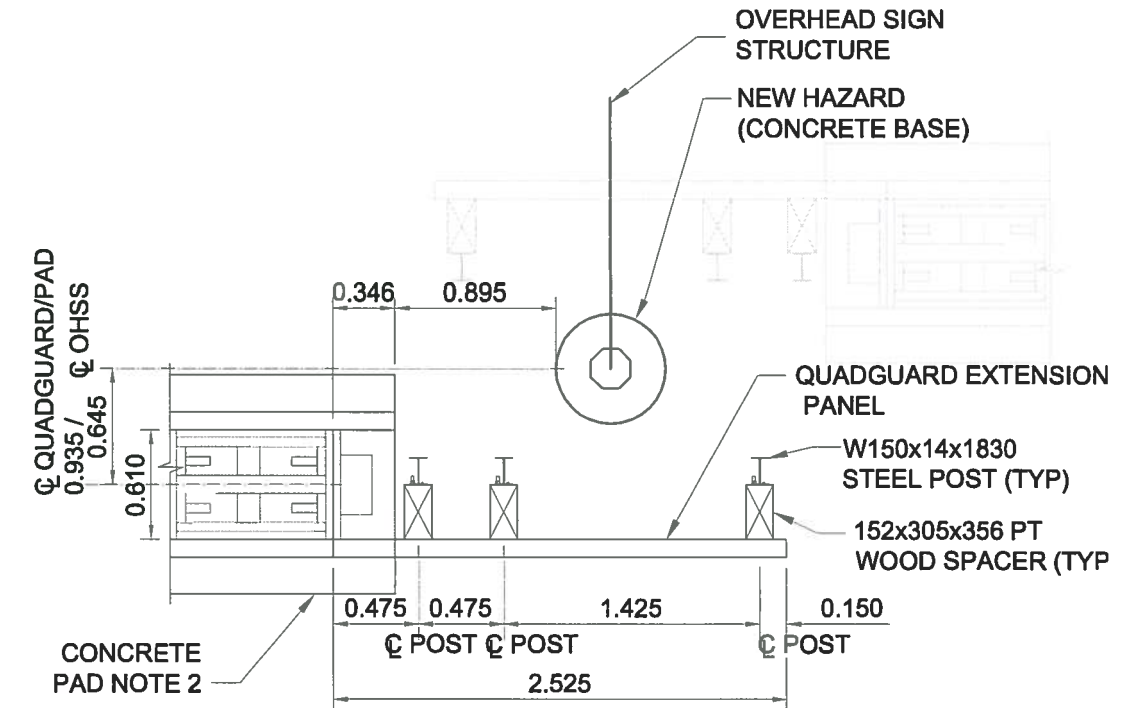
SITE PLAN - QUADGUARD LAYOUT

HORIZONTAL SCALE 1:100



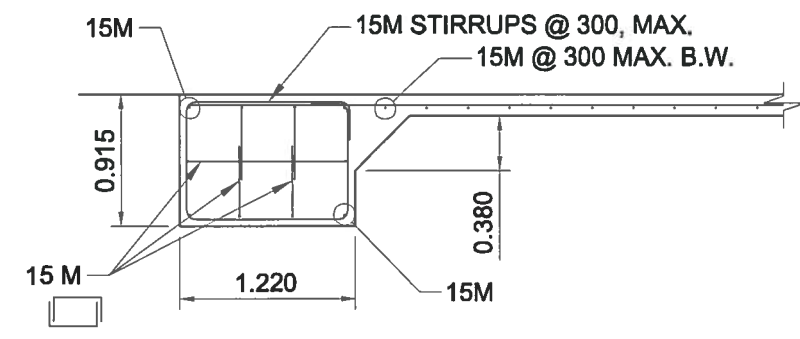
SITE ELEVATION - LOOKING WEST

HORIZONTAL SCALE 1:100



QUADGUARD EXTENSION PANEL

SCALE 1:40



DETAIL

METRIC

WHOLE NUMBERS INDICATE MILLIMETRES
DECIMALIZED NUMBERS INDICATE METRES

NOTES:

1. CURB SHALL BE REMOVED AND REPLACED WITH SD-205 BARRIER CURB (100 HEIGHT) ALONG ENTIRE LENGTH OF QUADGUARD SYSTEM. CURB SHALL ALSO BE REMOVED AND REPLACED WITH SD-205 BARRIER CURB (100 HEIGHT) 15m IN FRONT OF QUADGUARD SYSTEM IN THE DIRECTION OF TRAVEL.
2. CONCRETE PAD SHALL BE 150 MIN. REINFORCED 32 MPa PORTLAND CEMENT CONCRETE OVER 250 BASE COURSE. REINFORCING SHALL BE 15 M BARS @ 300 O.C. B/W. TRANSVERSE JOINTS SHALL LOCATED EVERY 1500 O.C..
3. CONTRACTOR TO CONSTRUCT CONCRETE PAD AND RELATED WORKS IN ACCORDANCE WITH CONTRACT SPECIFICATION E9.
4. CONTRACTOR SHALL SEED DISTURBED AREAS IN ACCORDANCE WITH CONTRACT SPECIFICATION E6.
5. ALL ITEMS NOT INCLUDED IN CONTRACT SPECIFICATION SHALL BE CONSTRUCTED IN ACCORDANCE WITH THE CITY OF WINNIPEG STANDARD CONSTRUCTION SPECIFICATIONS.
6. THE CRASH ATTENUATION BARRIER SHOWN IS THE QUADGUARD AND RELATED CONCRETE DETAILS ARE FOR ILLUSTRATION PURPOSES. THE TAU-II IS EQUAL BUT WILL REQUIRE THE MANUFACTURER TO PREPARE APPROPRIATE DETAILS FOR THE CONTRACT ADMINISTRATORS APPROVAL.

100 ASPHALT WITH 300 MIN. BASE COURSE ON COMPACTED SUBGRADE

B.M. ELEV.	AECOM		ENGINEER'S SEAL B. D. KNEZACEK Member 33068 REGISTERED PROFESSIONAL ENGINEER	THE CITY OF WINNIPEG PUBLIC WORKS DEPARTMENT		
	DESIGNED BY	BDK		CHECKED BY	TGS	INKSTER BOULEVARD WIDENING PROJECT BROOKSIDE BOULEVARD TO KEEWATIN STREET
	DRAWN BY	PAAP		APPROVED BY		
	HOR. SCALE:	AS SHOWN		RELEASED FOR CONSTRUCTION BY:		CITY DRAWING NUMBER S759-11-02
NO. REVISIONS	DATE	DATE	DATE	DATE	SHEET 6 OF 8	
0	ISSUED FOR TENDER	12/01/30	BDK	2011/08/29	STRUCTURE NO. S759 QUADGUARD DETAILS	