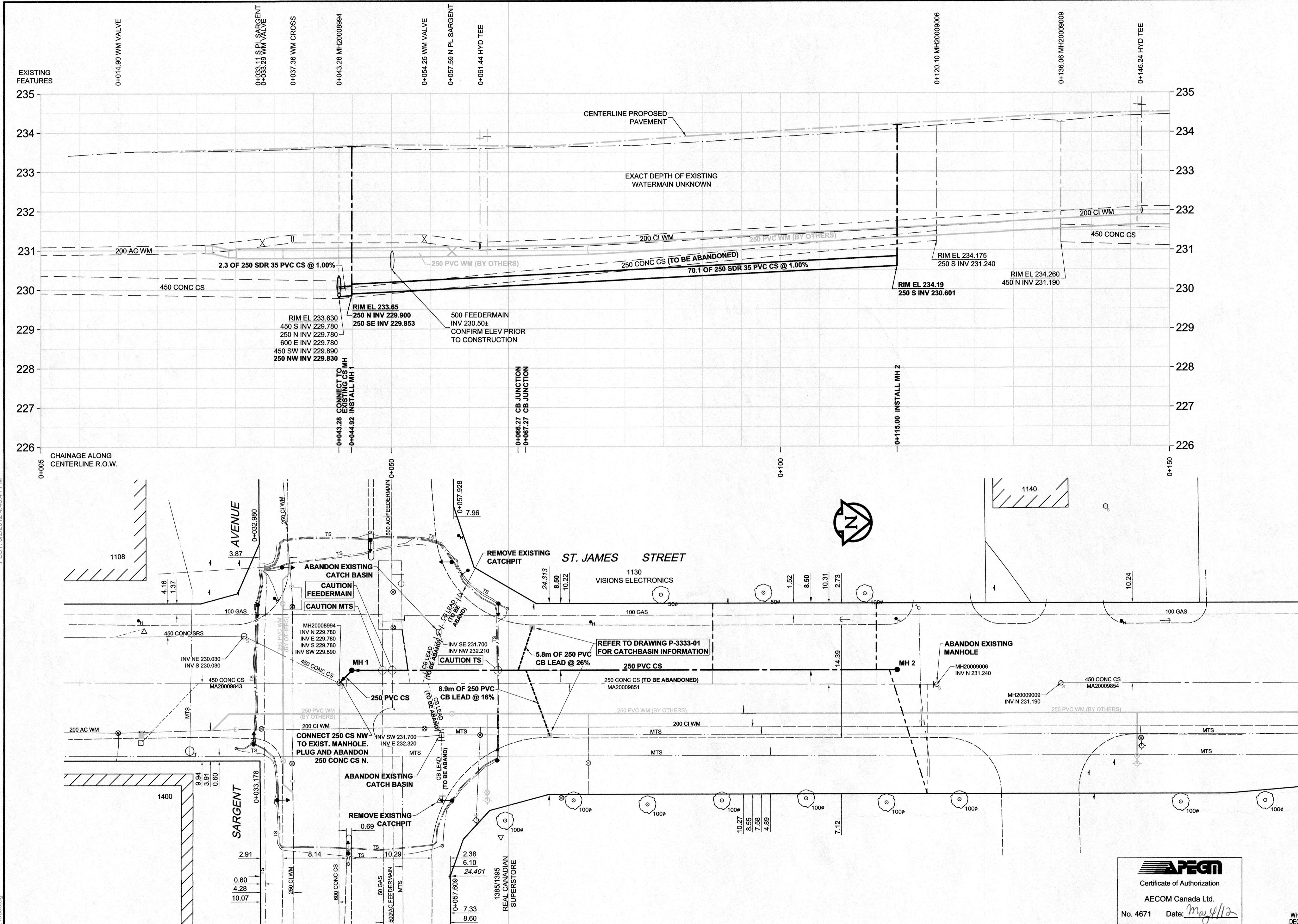


D SIZE 22" x 34" (559mm x 864mm)

PLOT: 5/2/2012 4:48:41 PM

AECOM REVIEW DRFT CHK
AECOM FILE NAME: CU-01.dwg, Saved By: lacostig



- CONSTRUCTION NOTES:**
1. ALL WORK AND MATERIALS SHALL CONFORM TO THE CITY OF WINNIPEG STANDARD SPECIFICATIONS.
 2. INSTALL NEW SEWER BY TRENCHLESS METHODS.
 3. ALL AUGER SHAFTS SHALL HAVE CLASS 3 BACKFILL UNDER PAVED SURFACES.
 4. CONFIRM SEWER SERVICE LOCATIONS AND CONDITION PRIOR TO CONSTRUCTION.
 5. RENEW SEWER SERVICES TO PROPERTY LINE.
 6. ALL SEWER AND WATER SERVICES TO BE LOCATED IN THE FIELD BY THE CONTRACTOR.
 7. ABANDON EXISTING SEWER AND SEWER SERVICES.
 8. ALL SEWER SERVICES SHALL BE 150 OR 200 PVC SDR 35.
 9. EXISTING WASTEWATER SEWER TO BE CAPPED AND ABANDONED.

SEWER JUNCTION INFORMATION

REF MH*	DIST FROM* REF MH	SIZE*	CLOCK AT*
MH20009006	1.20	200Ø	09
MH20009006	7.80	200Ø	03
MH20009006	28.80	200Ø	03
MH20008994	9.10	150Ø	09
MH20008994	11.00	150Ø	03
MH20008994	11.70	150Ø	10

*JUNCTION INFORMATION FROM VIDEO INSPECTION

WARNING
IF POWER EQUIPMENT OR EXPLOSIVES ARE TO BE USED FOR EXCAVATION ON THIS PROJECT, THE CONTRACTOR MUST:
1) NOTIFY THE GAS COMPANY OF THE PROPOSED LOCATION OF EXCAVATION.
2) TAKE PRECAUTION TO AVOID DAMAGE TO GAS COMPANY INSTALLATIONS.
SEE PROVINCIAL REGULATION 140/92 FOR DETAILS

AECOM
Certificate of Authorization
AECOM Canada Ltd.
No. 4671 Date: May 11/12

METRIC
WHOLE NUMBERS INDICATE MILLIMETRES
DECIMALIZED NUMBERS INDICATE METRES
BID OPPORTUNITY NO. 159-2012

150 WM	WATERMAIN	150 WM	CURB STOP	150 WM	WATERMAIN	150 WM	LOCATION APPROVED
○	HYDRANT	○	REDUCER	○	HYDRANT	○	UNDERGROUND STRUCTURES
○	VALVE	○	COUPLING	○	VALVE	○	DATE
300 LDS	LAND DRAINAGE SEWER	300 LDS	ANODE	300 LDS	LAND DRAINAGE SEWER	300 LDS	SUPR. U/G STRUCTURES COMMITTEE
250 WWS	WASTE WATER SEWER	250 WWS	HYDRO	250 WWS	WASTE WATER SEWER	250 WWS	NOTE:
○	MANHOLE	○	MTS	○	PAVEMENT CROWN	○	LOCATION OF UNDERGROUND STRUCTURES AS SHOWN ARE BASED ON THE BEST INFORMATION AVAILABLE. BUT NO GUARANTEE IS GIVEN THAT ALL EXISTING UTILITIES ARE SHOWN OR THAT THE GIVEN LOCATIONS ARE EXACT. CONFIRMATION OF EXISTENCE AND EXACT LOCATION OF ALL SERVICES MUST BE OBTAINED FROM THE INDIVIDUAL UTILITIES BEFORE PROCEEDING WITH CONSTRUCTION.
□	CATCH BASIN	□	GAS	□	N/W PROPERTY LINE	□	
△	CURB INLET	△	TESTHOLE	△	S/E PROPERTY LINE	△	
---	CULVERT	---	LAMP STANDARD	---	N/W GUTTER	---	
+	PIPE ABANDONMENTS	+	TREE	+	S/E GUTTER	+	
+	SURVEY BAR	+		+		+	
---	EXISTING	---	LEGEND - PLAN	---	LEGEND - PROFILE	---	
---	NEW	---	LEGEND - PLAN	---	NEW	---	

NO.	REVISIONS	DATE	BY
0	ISSUED FOR TENDER	12/05/01	PL
A	ISSUED FOR REVIEW	12/04/04	PL
		YYMMDD	

DESIGNED BY	PL	CHECKED BY	A. Deland
DRAWN BY	JP	APPROVED BY	[Signature]
HOR. SCALE	1:250	RELEASED FOR CONSTRUCTION	[Signature]
VERT. SCALE	1:50	DATE	2012-05-07

PROFESSIONAL'S SEAL
PROVINCE OF MANITOBA
K.W. FITCHETT
REGISTERED PROFESSIONAL ENGINEER
CONSULTANT DRAWING NO. CU-01.dwg

THE CITY OF WINNIPEG
WATER AND WASTE DEPARTMENT

ST. JAMES STREET
SARGENT AVENUE TO WELLINGTON AVENUE
MAJOR REHABILITATION
COMBINED SEWER RENEWAL

St. James Street
Sargent Avenue to 90m North of Sargent Avenue

SHEET 1 OF 1
CITY DRAWING NUMBER
10121
REV 0