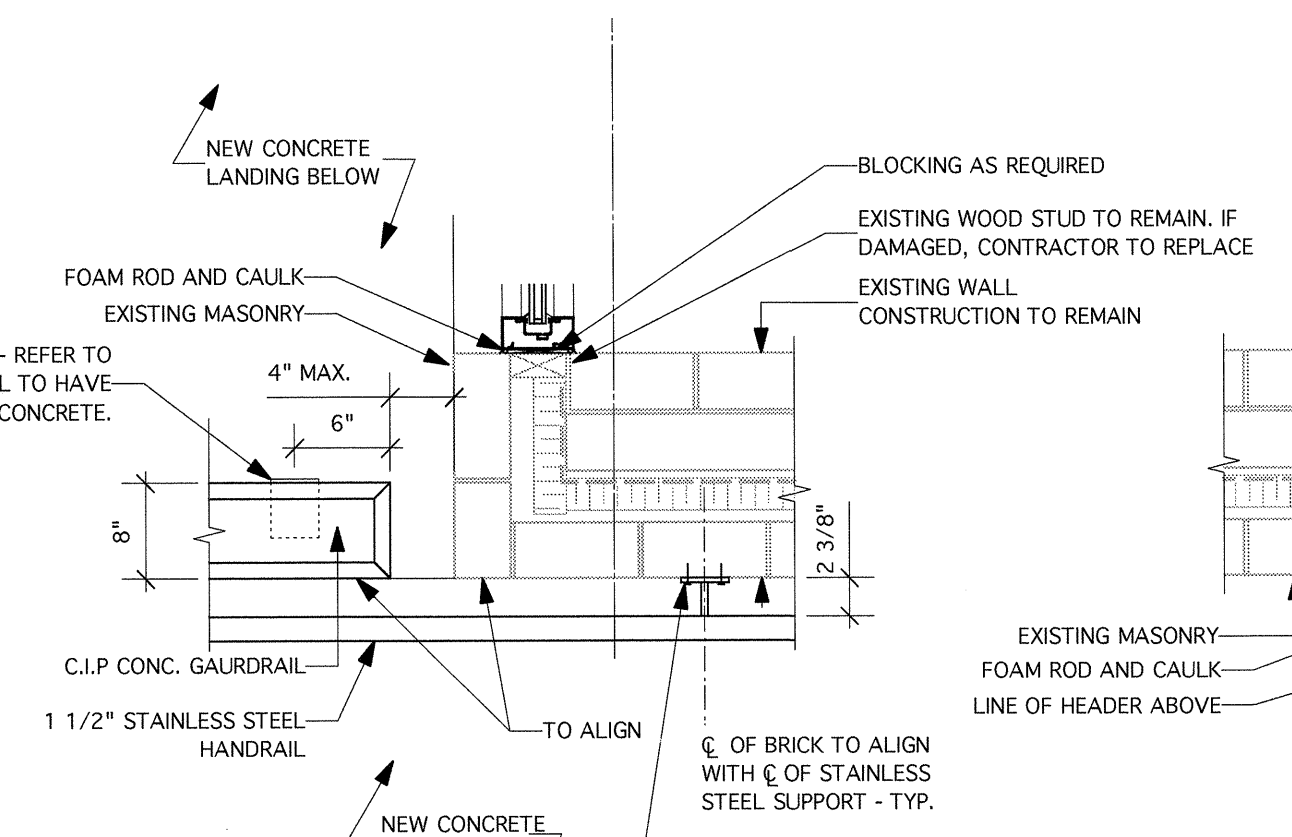
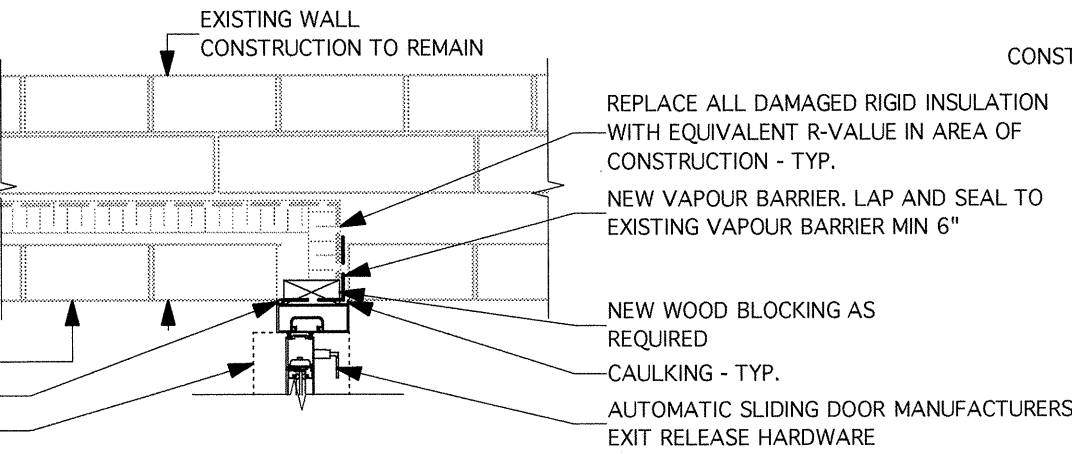


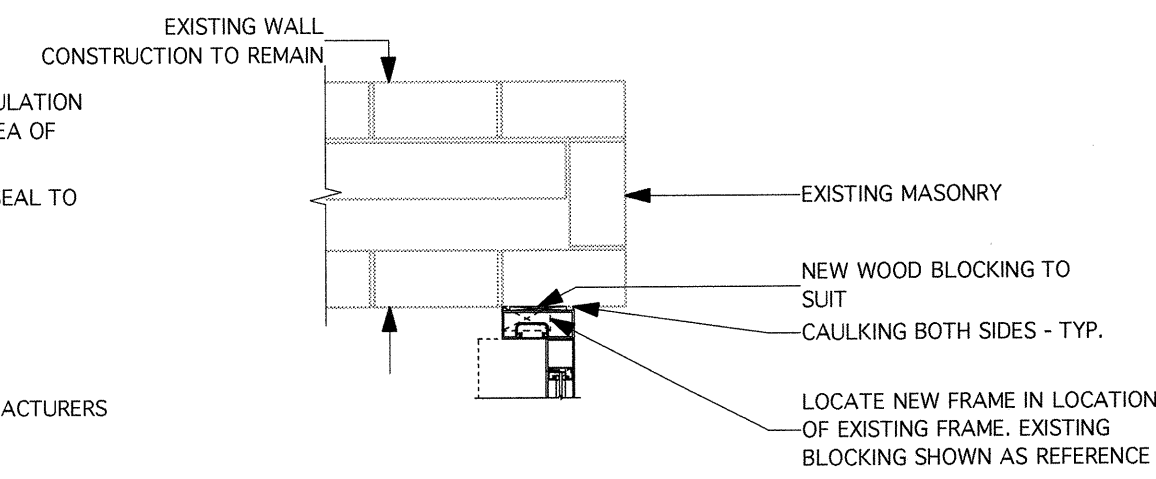
1 PLAN DETAIL
Scale 1" = 1'-0"



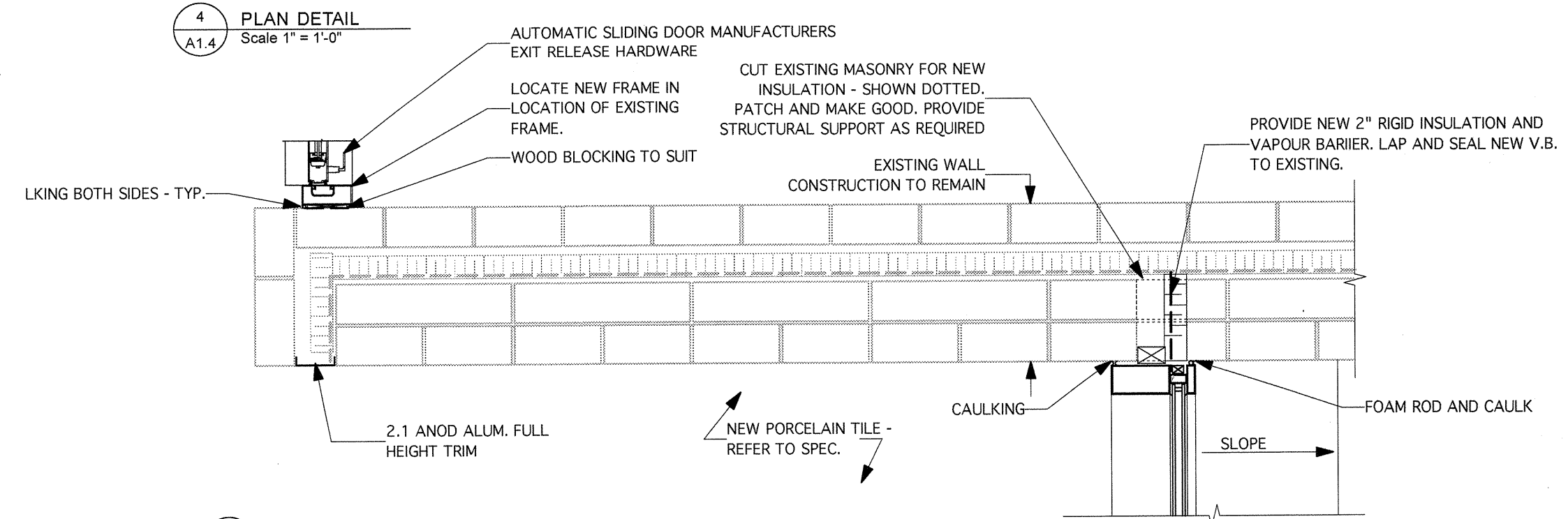
2 PLAN DETAIL
Scale 1" = 1'-0"



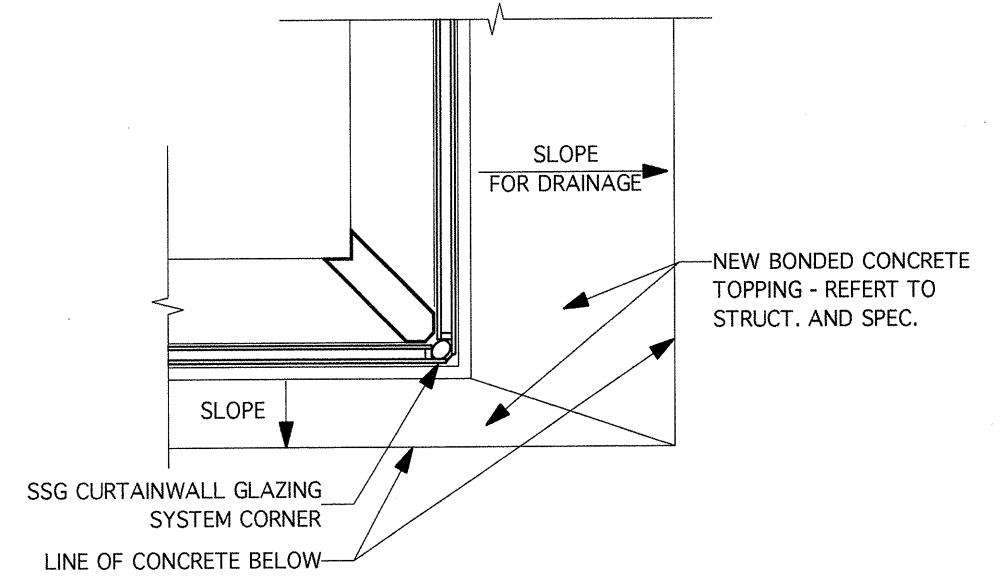
3 PLAN DETAIL
Scale 1" = 1'-0"



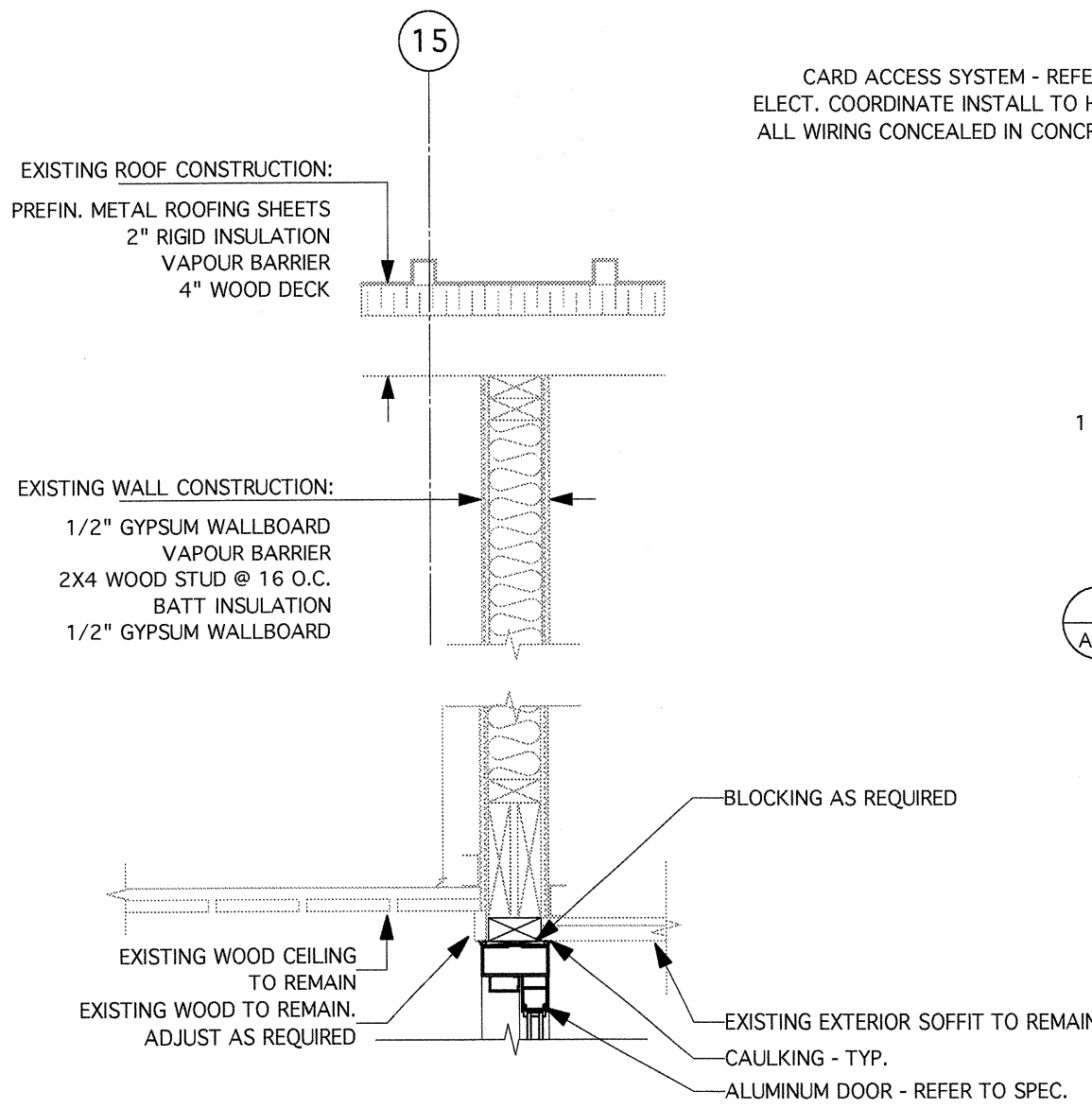
4 PLAN DETAIL
Scale 1" = 1'-0"



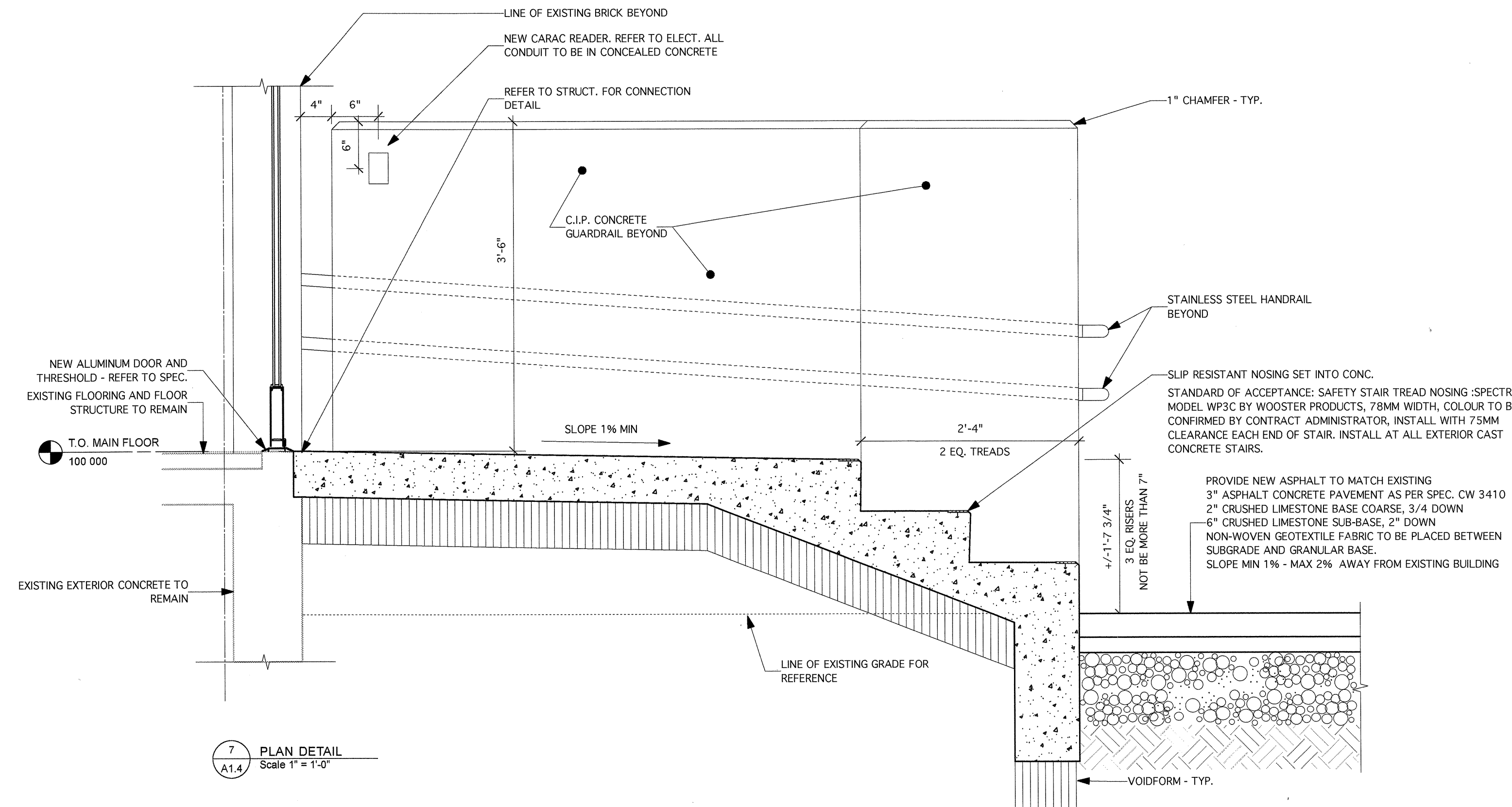
5 PLAN DETAIL
Scale 1" = 1'-0"



6 PLAN DETAIL
Scale 1" = 1'-0"



7 PLAN DETAIL
Scale 1" = 1'-0"



NOTES:
1. ASPHALT CONCRETE PAVEMENT WORKS AS PER CW 3410
2. SUB-GRADE, SUB-BASE AND BASE COARSE CONSTRUCTION AS PER CW3110
3. TOPSOIL & SOD AS PER CW3510 AND CW3540
4. GEOTEXTILE FABRIC AS PER CW3130

No.	DATE	REVISION / ISSUANCE
5	YY.MM.DD	-
4	YY.MM.DD	-
3	YY.MM.DD	-
2	YY.MM.DD	-
1	2012.03.15	ISSUED FOR CONSTRUCTION

Architect

1x1 architecture inc.
417 Highway 104 East Winnipeg, Manitoba R3B 0K6 204.318.2019

Engineer

Project: BID OPPORTUNITY 139 - 2012
 Elmwood Kildonan Pool
 Front Entrance Upgrades
 909 Concordia Ave

PLAN DETAILS & WALL SECTIONS

Project No. 1125 Sheet
 Date MARCH 15 2012

A1.4