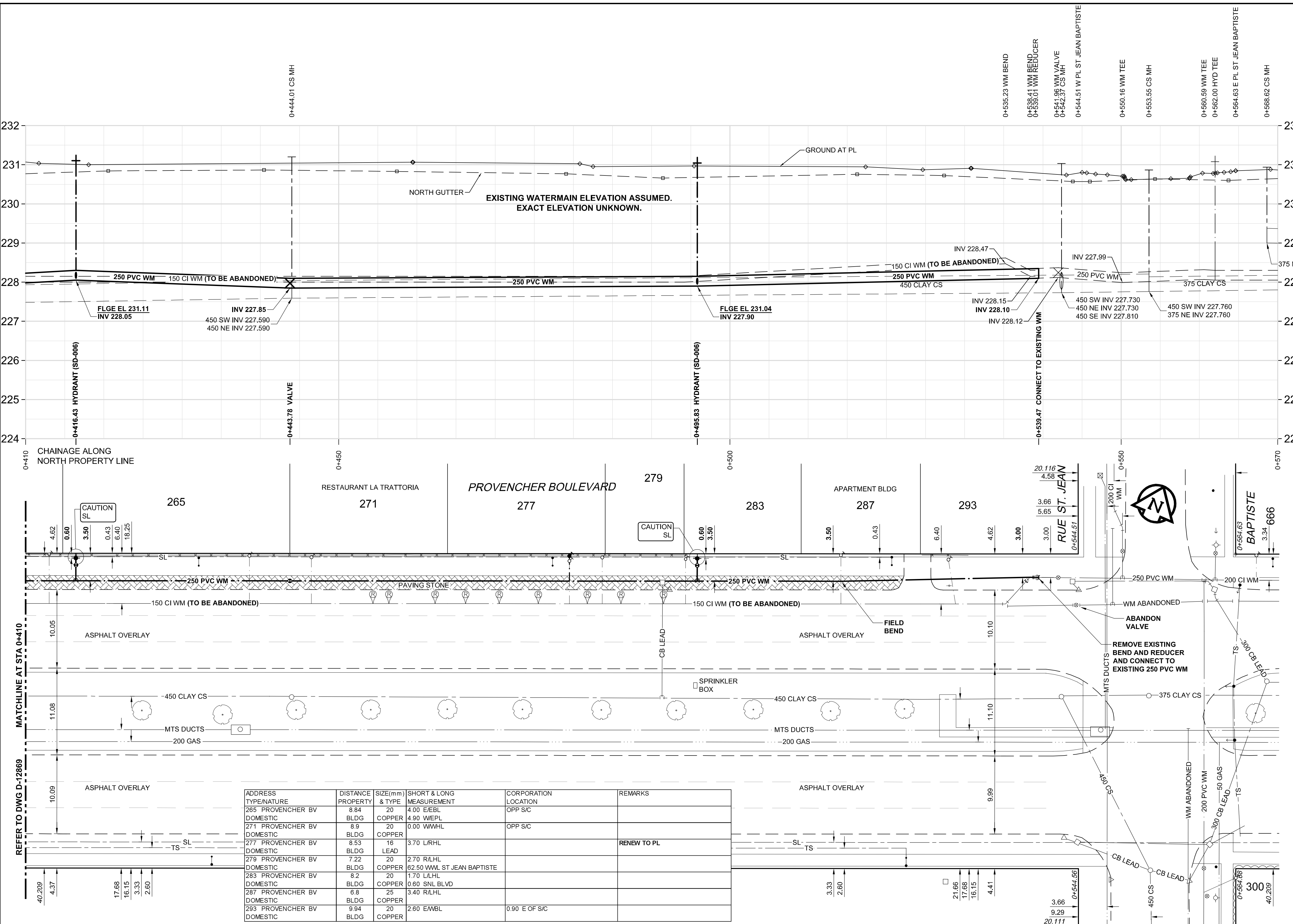


D SIZE 22" x 34" (559mm x 864mm)

PLOT: 3/6/2012 9:49:47 AM

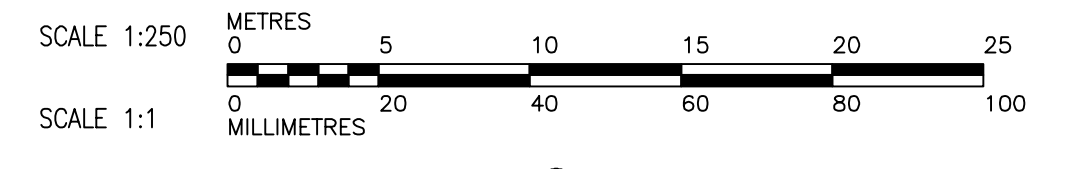
REFER TO DWG D-12869



ADDRESS TYPE/NATURE	DISTANCE PROPERTY	SIZE(mm) & TYPE	SHORT & LONG MEASUREMENT	CORPORATION LOCATION	REMARKS
265 PROVENCHER BV DOMESTIC	8.84	20 BLDG COPPER	4.00 E/EBL 4.90 W/EPL	OPP SIC	
271 PROVENCHER BV DOMESTIC	8.9	20 BLDG COPPER	0.00 W/WHL	OPP SIC	
277 PROVENCHER BV DOMESTIC	8.53	16 BLDG LEAD	3.70 LR/HL		RENEW TO PL
279 PROVENCHER BV DOMESTIC	7.22	20 BLDG COPPER	2.70 RL/HL 62.50 W/M, ST JEAN BAPTISTE		
283 PROVENCHER BV DOMESTIC	8.2	20 BLDG COPPER	1.70 LA/HL 0.60 SNL BLVD		
287 PROVENCHER BV DOMESTIC	6.8	25 BLDG COPPER	3.40 RL/HL		
293 PROVENCHER BV DOMESTIC	9.94	20 BLDG COPPER	2.60 E/MBL	0.90 E OF SIC	

WARNING
 IF POWER EQUIPMENT OR EXPLOSIVES ARE TO BE USED FOR EXCAVATION ON THIS PROJECT, THE CONTRACTOR MUST NOTIFY THE GAS COMPANY OF THE PROPOSED LOCATION OF EXCAVATION. TAKE PRECAUTION TO AVOID DAMAGE TO GAS COMPANY INSTALLATIONS. SEE PROVINCIAL REGULATION 140/92 FOR DETAILS

- CONSTRUCTION NOTES:**
1. EXPOSE WATERMAIN CONNECTIONS AND CONFIRM INVERTS PRIOR TO CONSTRUCTION
 2. INSTALL WATERMAIN BY TRENCHLESS METHODS.
 3. ALL MATERIALS SHALL CONFORM TO THE CITY OF WINNIPEG STANDARD CONSTRUCTION SPECIFICATIONS
 4. MINIMUM COVER TO TOP OF PROPOSED WATERMAIN SHALL BE 2.5m FROM STREET CENTERLINE.
 5. INSTALL ALL HYDRANTS WITH FLANGE ELEVATION 50mm TO 150mm ABOVE FINISHED GRADE.
 6. REPLACE ALL EXISTING LEAD SERVICES FROM THE PROPOSED WATERMAIN TO PROPERTY LINE.
 7. NOTIFY ALL AFFECTED RESIDENTS AND BUSINESSES 24 HOURS IN ADVANCE OF ANY WATER SHUTDOWN OR DISRUPTION OF SERVICE.
 8. LOCATION OF WATER SERVICES SHOWN ON DRAWINGS ARE APPROXIMATE. THE CONTRACTOR SHALL FIELD LOCATE ALL WATER SERVICES PRIOR TO CONSTRUCTION.
 9. BACKFILL UNDER OR WITHIN 1.0m OF PAVEMENTS, INCLUDING SIDEWALKS SHALL BE CLASS 3 BACKFILL EXCEPT AS NOTED. BACKFILL IN BOULEVARDS SHALL BE CLASS 5 BACKFILL.
 10. LOCATE AND RECONNECT ALL SERVICES FOR IRRIGATION SYSTEM IN THE MEDIAN OF PROVENCHER BOULEVARD.



BID OPPORTUNITY NO. 135-2012

EXISTING	LEGEND - PLAN	NEW	EXISTING	LEGEND - PLAN	NEW	EXISTING	LEGEND - PROFILE	NEW
150 WM	WATERMAIN	150 WM	150 WM	WATERMAIN	150 WM	300 LDS	WATERMAIN	300 LDS
300 LDS	HYDRANT VALVE	300 LDS	300 LDS	HYDRANT VALVE	300 LDS	250 WWS	HYDRANT VALVE	250 WWS
250 WWS	LAND DRAINAGE SEWER	250 WWS	250 WWS	LAND DRAINAGE SEWER	250 WWS		WASTE WATER SEWER	
	WASTE WATER SEWER			WASTE WATER SEWER			MANHOLE	
	MANHOLE			MANHOLE			CATCH BASIN	
	CATCH BASIN			CATCH BASIN			CURB INLET	
	CURB INLET			CURB INLET			CULVERT	
	CULVERT			CULVERT			PIPE ABANDONMENTS	
	PIPE ABANDONMENTS			PIPE ABANDONMENTS			SURVEY BAR	
	SURVEY BAR			SURVEY BAR				

LOCATION APPROVED UNDERGROUND STRUCTURES

SUPR. U/G STRUCTURES DATE COMMITTEE

NOTE: LOCATION OF UNDERGROUND STRUCTURES AS SHOWN ARE BASED ON THE BEST INFORMATION AVAILABLE. BUT NO GUARANTEE IS GIVEN THAT ALL EXISTING UTILITIES ARE SHOWN OR THAT THE GIVEN LOCATIONS ARE EXACT. CONFIRMATION OF EXISTENCE AND EXACT LOCATION OF ALL SERVICES MUST BE OBTAINED FROM THE INDIVIDUAL UTILITIES BEFORE PROCEEDING WITH CONSTRUCTION.

BM 34-015
ELEV. 230.669m

S.W. Cor. Rue Dumoulin & Rue Langevin, Tbl. in E. side of District No. 5, Poste Publique in 'Y' Conc. adjacent below street level, 3.5 m N. of S.E. Cor. of sub-grade garage.

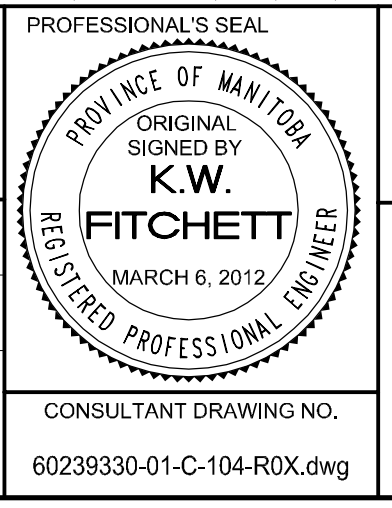
AECOM

DESIGNED BY: GSK
CHECKED BY: FMI

DRAWN BY: JP
APPROVED BY: BTW

HOR. SCALE: 1:250
VERT. SCALE: 1:50

RELEASER FOR CONSTRUCTION: KAS ZUREK
DATE: 2012/03/06



THE CITY OF WINNIPEG WATER AND WASTE DEPARTMENT

2012 WATERMAIN RENEWALS CONTRACT 1

PROVENCHER BOULEVARD
66.8m EAST of RUE LANGEVIN TO RUE ST. JEAN BAPTISTE

SHEET 6 OF 11
CITY DRAWING NUMBER
REV 0

D-12870