

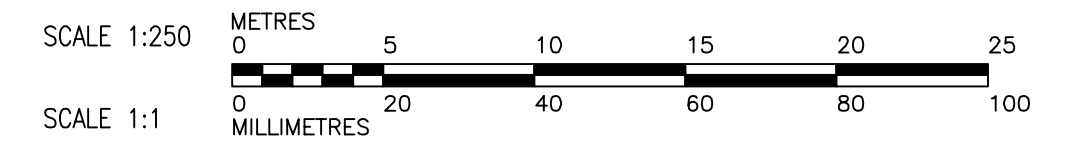
ADDRESS	DISTANCE	SIZE(mm)	SHORT & LONG	CORPORATION	REMARKS
TYPE/NATURE	PROPERTY	& TYPE	MEASUREMENT	LOCATION	
115 BARRINGTON AV	14.36		4.60 L/R		
DOMESTIC	BLDG		9.40 WML PULBERRY		
116 BARRINGTON AV	14.36		4.90 R/L		
DOMESTIC	BLDG		7.60 WWL PULBERRY		
19 PULBERRY ST		20	2.10 WEHL	1.50 EEHL	
DOMESTIC		COPPER			
23 PULBERRY ST		20	3.20 EWHL		
DOMESTIC		COPPER			
105 ST VITAL RD		20	1.20 WEHL	6.00 E/SW COR HOUSE	
DOMESTIC		COPPER			
106 ST VITAL RD		20	3.70 WEHL	14.10 N/NE COR HOUSE	
DOMESTIC		COPPER			
107 ST VITAL RD					
DOMESTIC					
108 ST VITAL RD		20	2.40 WEHL		
DOMESTIC		COPPER			

WARNING

IF POWER EQUIPMENT OR EXPLOSIVES ARE TO BE USED FOR EXCAVATION ON THIS PROJECT, THE CONTRACTOR MUST NOTIFY THE GAS COMPANY OF THE PROPOSED LOCATION OF EXCAVATION. TAKE PRECAUTION TO AVOID DAMAGE TO GAS COMPANY INSTALLATIONS. SEE PROVINCIAL REGULATION 140/92 FOR DETAILS.

CONSTRUCTION NOTES:

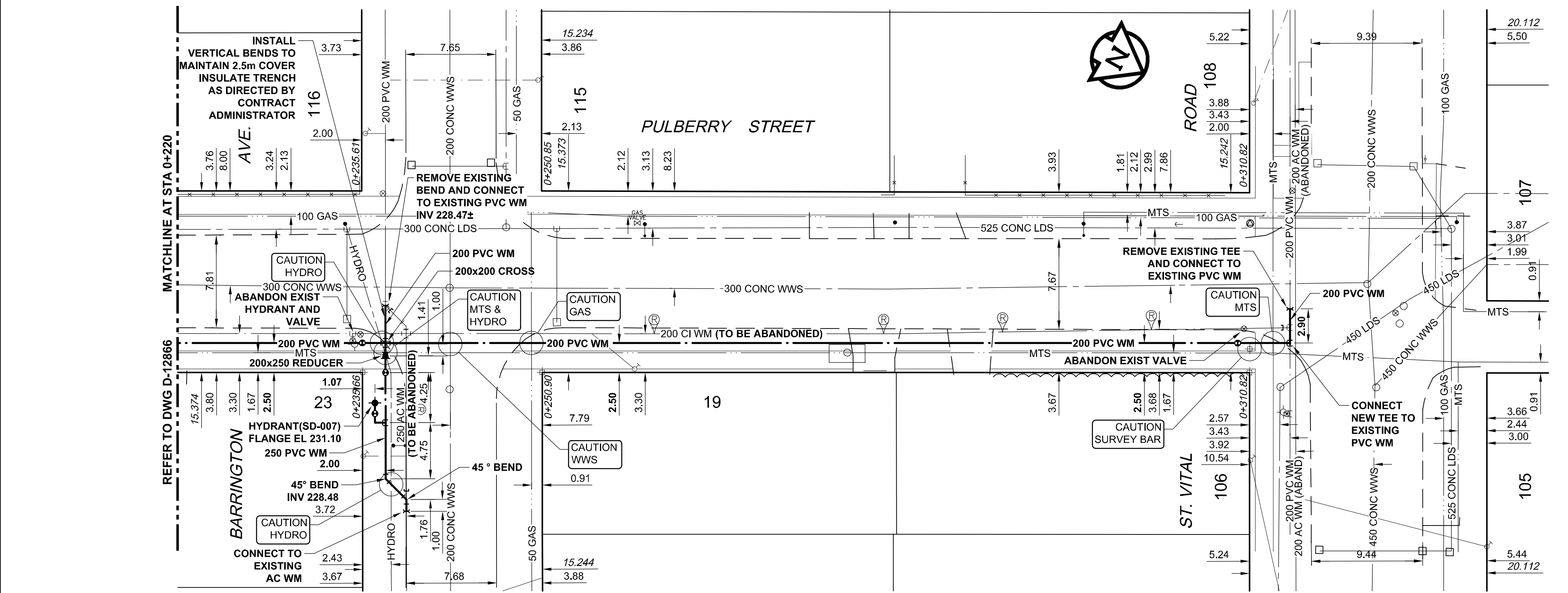
- EXPOSE WATERMAIN CONNECTIONS AND CONFIRM INVERTS PRIOR TO CONSTRUCTION.
- INSTALL WATERMAIN BY TRENCHLESS METHODS.
- ALL MATERIALS SHALL CONFORM TO THE CITY OF WINNIPEG STANDARD CONSTRUCTION SPECIFICATIONS.
- MINIMUM COVER TO TOP OF PROPOSED WATERMAIN SHALL BE 2.5m FROM STREET CENTERLINE.
- INSTALL ALL HYDRANTS WITH FLANGE ELEVATION 50mm TO 150mm ABOVE FINISHED GRADE.
- REPLACE ALL EXISTING LEAD SERVICES FROM THE PROPOSED WATERMAIN TO PROPERTY LINE.
- NOTIFY ALL AFFECTED RESIDENTS AND BUSINESSES 24 HOURS IN ADVANCE OF ANY WATER SHUTDOWN OR DISRUPTION OF SERVICE.
- LOCATION OF WATER SERVICES SHOWN ON DRAWINGS ARE APPROXIMATE. THE CONTRACTOR SHALL FIELD LOCATE ALL WATER SERVICES PRIOR TO CONSTRUCTION.
- BACKFILL UNDER OR WITHIN 1.0m OF PAVEMENTS, INCLUDING SIDEWALKS SHALL BE CLASS 3 BACKFILL EXCEPT AS NOTED. BACKFILL IN BOULEVARDS SHALL BE CLASS 5 BACKFILL.



METRIC
 WHOLE NUMBERS INDICATE MILLIMETRES
 DECIMALIZED NUMBERS INDICATE METRES



BID OPPORTUNITY NO. 135-2012



EXISTING	LEGEND - PLAN	NEW	EXISTING	LEGEND - PLAN	NEW	EXISTING	LEGEND - PROFILE	NEW	EXISTING	LEGEND - PROFILE	NEW
150 WM	WATERMAIN	150 WM	150 WM	CURB STOP	150 WM	150 WM	WATERMAIN	150 WM	150 WM	WATERMAIN	150 WM
300 LDS	VALVE	300 LDS	300 LDS	REDUCER	300 LDS	300 LDS	HYDRANT	300 LDS	300 LDS	HYDRANT	300 LDS
250 WWS	LAND DRAINAGE SEWER	250 WWS	250 WWS	COUPLING	250 WWS	250 WWS	VALVE	250 WWS	250 WWS	VALVE	250 WWS
	WASTE WATER SEWER			ANODE			LAND DRAINAGE SEWER			LAND DRAINAGE SEWER	
	MANHOLE			HYDRO			WASTE WATER SEWER			WASTE WATER SEWER	
	CATCH BASIN			MTS			PAVEMENT CROWN			PAVEMENT CROWN	
	CURB INLET			GAS			N/W PROPERTY LINE			N/W PROPERTY LINE	
	CULVERT			TESTHOLE			S/E PROPERTY LINE			S/E PROPERTY LINE	
	PIPE ABANDONMENTS			LAMP STANDARD			N/W GUTTER			N/W GUTTER	
	SURVEY BAR			TREE			S/E GUTTER			S/E GUTTER	
				PREVIOUS WM REPAIRS							

LOCATION APPROVED
 UNDERGROUND STRUCTURES

SUPR. U/G STRUCTURES DATE COMMITTEE

NOTE:
 LOCATION OF UNDERGROUND STRUCTURES AS SHOWN ARE BASED ON THE BEST INFORMATION AVAILABLE. BUT NO GUARANTEE IS GIVEN THAT ALL EXISTING UTILITIES ARE SHOWN OR THAT THE GIVEN LOCATIONS ARE EXACT. CONFIRMATION OF EXISTENCE AND EXACT LOCATION OF ALL SERVICES MUST BE OBTAINED FROM THE INDIVIDUAL UTILITIES BEFORE PROCEEDING WITH CONSTRUCTION.

NO.	REVISIONS	DATE	BY
0	ISSUED FOR CONSTRUCTION	12/03/06	JP
A	ISSUED FOR REVIEW	12/02/17	JP

BM 63-038
 ELEV. 231.197m

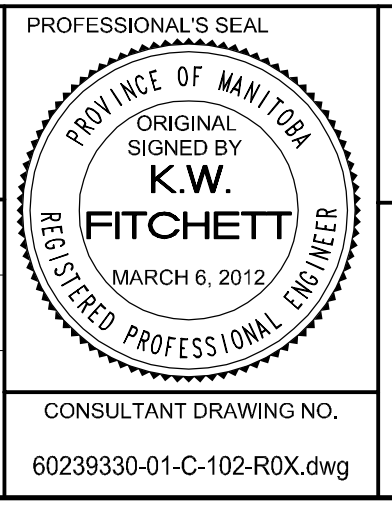
84R723 - N.E. Cor. Moore Ave. & Pulberry St. Tilt on top of 0.05 m dia. x 2.4 m iron pipe, 3.05 m S. of N.E. of Moore Ave. & on E.L. of Pulberry St.

AECOM

DESIGNED BY: GSK
 CHECKED BY: FMI
 DRAWN BY: JP
 APPROVED BY: BTW

HOR. SCALE: 1:250
 VERT. SCALE: 1:50

RELEASED FOR CONSTRUCTION: KAS ZUREK
 DATE: 2012/03/06



THE CITY OF WINNIPEG
 WATER AND WASTE DEPARTMENT

2012 WATERMAIN RENEWALS
 CONTRACT 1

PULBERRY STREET
 45m NORTH OF WOODBURY DRIVE TO ST. VITAL ROAD

SHEET 3 OF 11
 CITY DRAWING NUMBER
D-12867